

2385039---2016

06 JUNI 2016



↑

1000 900 800 700 600 500 400 300 200 100 0

10 09 03 02 01 C7 B7 A7 C8 B8 A8 C9 B9

4.5 5.0 5.6 6.3

C1 B1 A1 C2 B2 A2 B5 A5 20 18 17 16 11

41

Patch reference numbers on UTT

Image Engineering Scan Reference Chart TE293 Serial No.

the scale towards document



4.5 5.0 5.6 6.3

C1 B1 A1 C2 B2 A2 B5 A5 20 18 17 16 11

Patch Reference numbers on UTT

41

10 09 03 02 01 C7 B7 A7 C8 B8 A8 C9 B9

the scale towards document

Image Engineering Scan Reference Chart T2965 Serial No.



↑

180 170 160 150 140 130 120 110 100 90 80 70 60 50 40 30 20 10 0

10 09 03 02 01 C7 B7 A7 C8 B8 A8 C9 B9

4.5 5.0 5.6

C1 B1 A1 C2 B2 A2 B5 A5 20 18 17 16 11

Patch reference numbers on UTT

4i

Image Engineering Scan Reference Chart TE293 Serial No.

the scale towards document



Kelder

↑

180 170 160 150 140 130 120 110 100 90 80 70 60 50 40 30 20 10 0

10 09 03 02 01 C7 B7 A7 C8 B8 A8 C9 B9

4.5 5.0 5.6 6.3

C1 B1 A1 C2 B2 A2 B5 A5 20 18 17 16 11

Patch Reference numbers on UTT

4i

Image Engineering Scan Reference Chart TE263 Serial No.

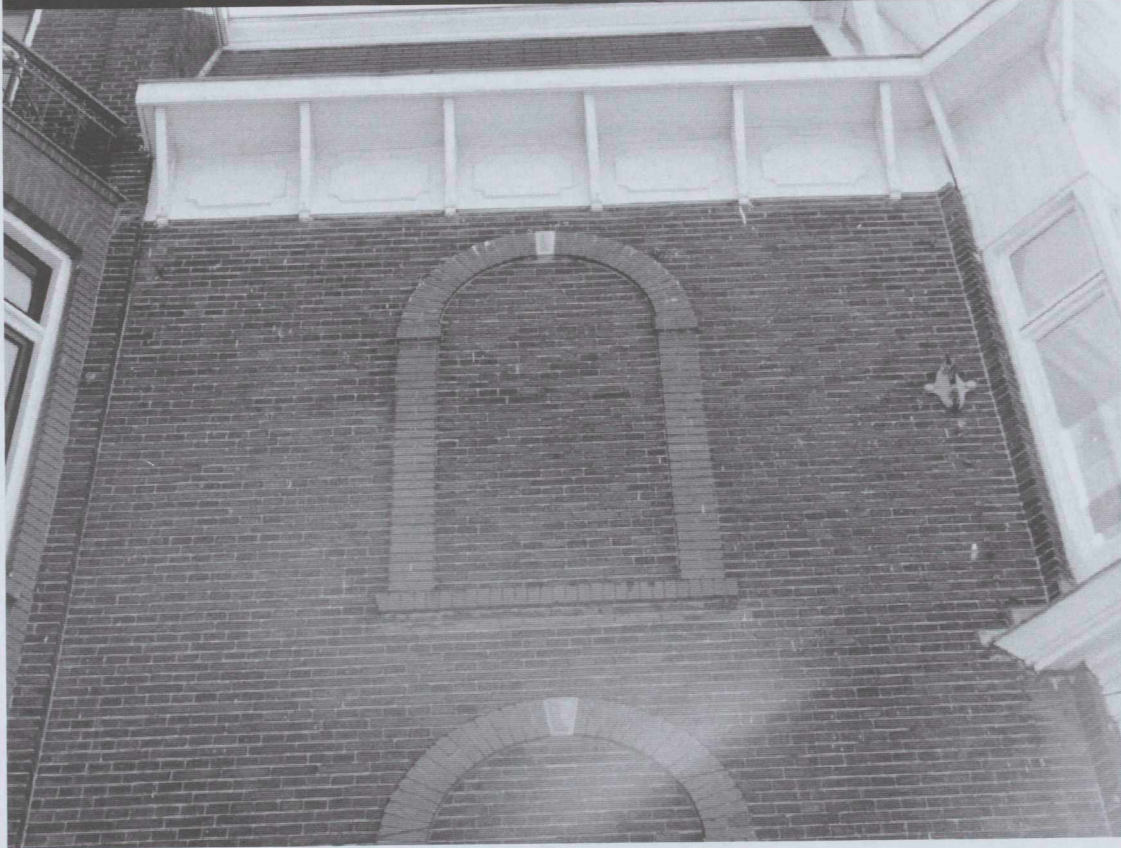
the scale towards document



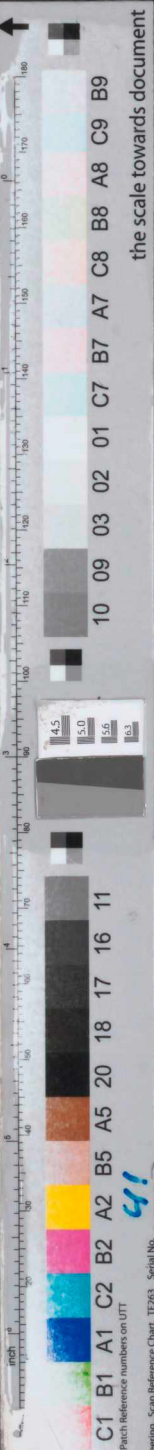


Eerste verdieping.





Positie nieuw te plaatsen kozijnen.





WILLEMSPARK  
WEG OUD-ZUID

HIER F...  
BOUW 38  
GROEP B.V.  
Tel: 06 10 15 48 46  
www.bouwgroep38.nl  
Postbus 114, 1000 WJ Amsterdam

220

216

Van Aoyden

www.waayden.nl



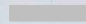



## VERSLAG

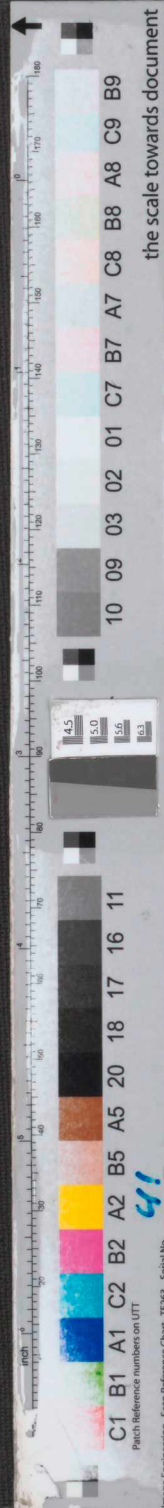
project Willemsparkweg 220  
onderwerp Opname gevel lateien 1<sup>e</sup> verdieping  
datum 11 juni 2018  
kenmerk 18321A-OPN-wilprk 220-001

WONINGBOUW & UTILITEITSBOUW  
Parlevinkerstraat 41 – 1951 AR Velsen-Noord  
Postbus 60- 1950 AB Velsen-Noord

+31 (0)251 28 47 00  
info@everspartners.nl  
www.everspartners.nl

opgemaakt door   
uitgave 00 definitief  
fase

paraaf	gezien	-
WDG 	RSC	-



### Inleiding

Op vrijdag 8 juni is op verzoek van de aannemer een werkbezoek gedaan om de gevel lateien onder de 1<sup>e</sup> verdieping aan de buitenzijde te controleren.

### Conclusie en aanbeveling

De lateien zien er goed uit. Eventuele lossen onderdelen zijn niet geconstateerd. Het geheel is geconserveerd. De plekken die door het onderzoek zijn schoon gemaakt, moeten alsnog geconserveerd worden.

#### *Latei tpv erker*

Ter plaatse van de erker, is de ondersabeling nagenoeg verdwenen, dit moet worden aangeheeld.

Op de hoek boven een steunpunt is een afname geconstateerd. Omdat het hier boven een steunpunt betreft is dit akkoord. Het staal moet goed worden geconserveerd.

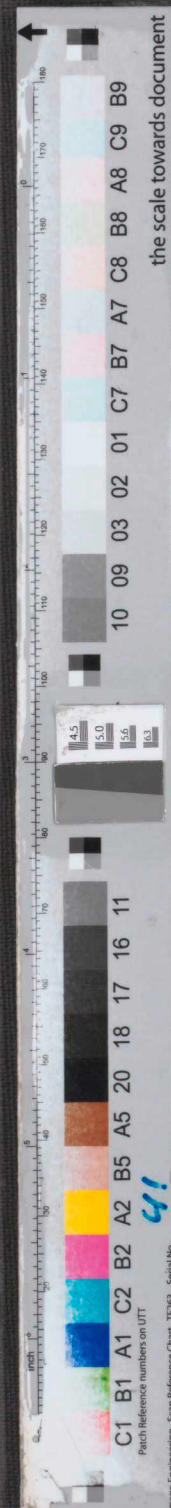
#### *Latei zijde Koninginnenweg*

Latei ziet er goed uit. Geen opmerkingen.

#### *Latei zijde Willemsparkweg*

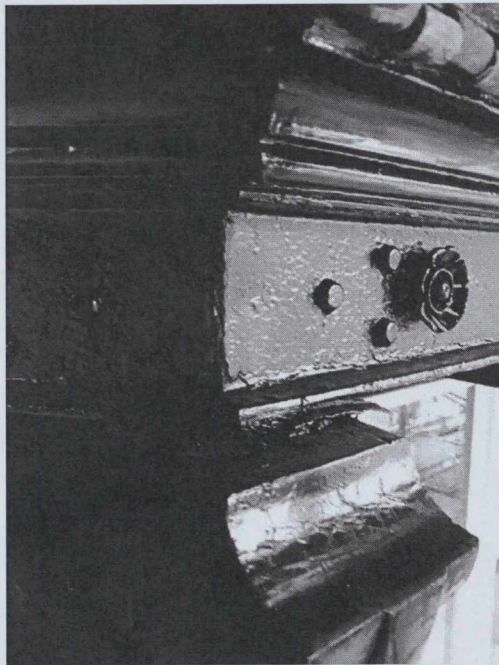
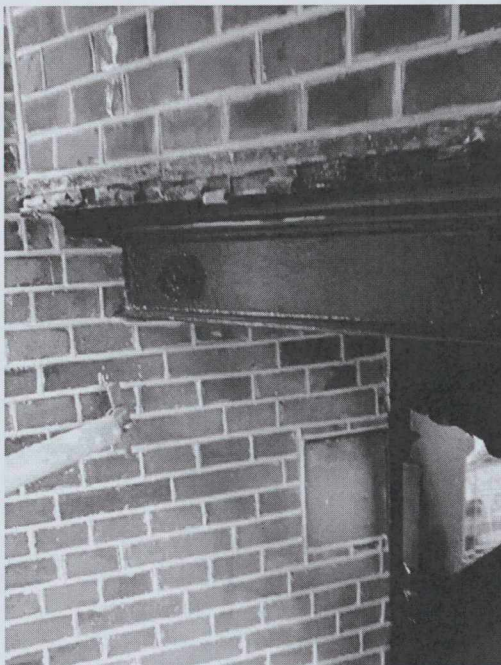
Latei ziet er goed uit. Geen opmerkingen.

datum	11 juni 2018
kenmerk	18321A-OPN-wilprk 220-001
blad	2 van 7

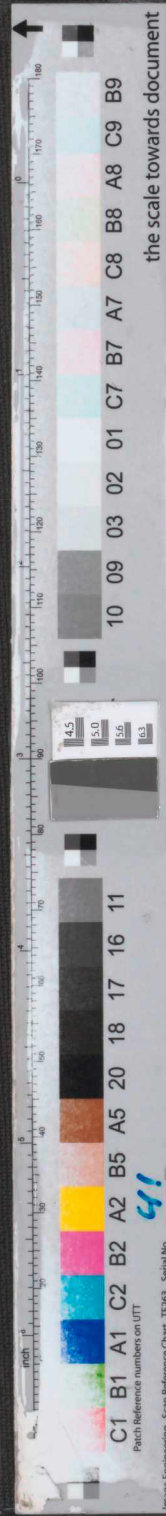


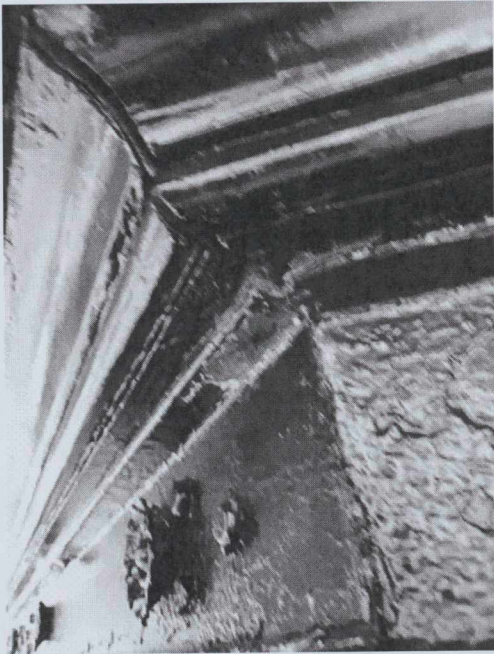
Fotorapportage

Foto's erker



datum 11 juni 2018  
kenmerk 18321A-OPN-wilprk 220-001  
blad 3 van 7





datum  
kenmerk  
blad

11 juni 2018  
18321A-OPN-wilprk 220-001  
4 van 7

↑

10 09 03 02 01 C7 B7 A7 C8 B8 A8 C9 B9

4.5 5.0 5.6 6.3

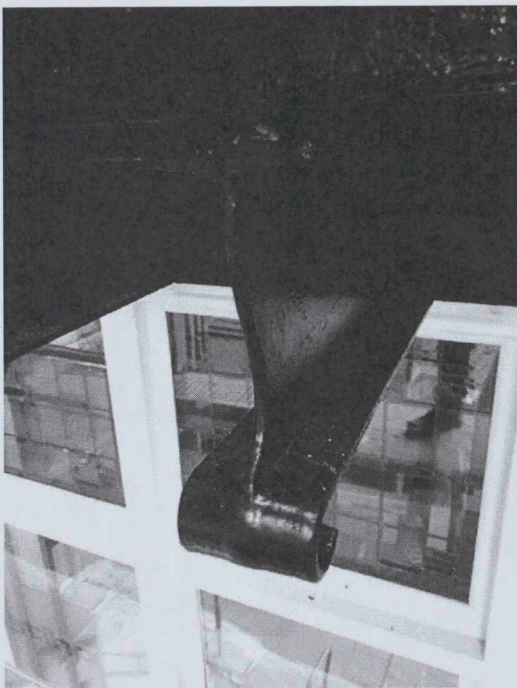
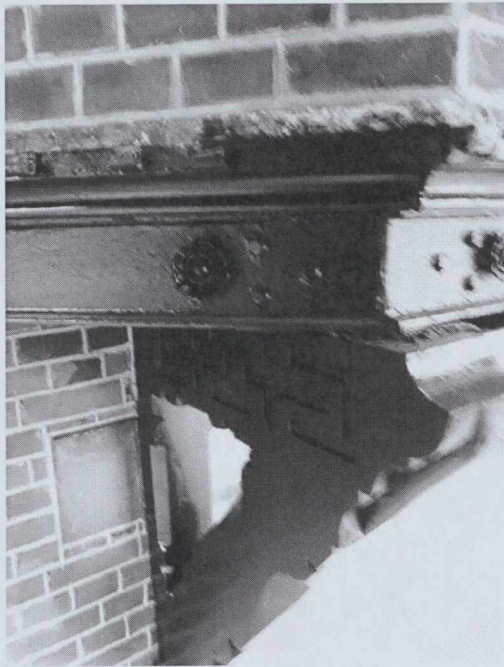
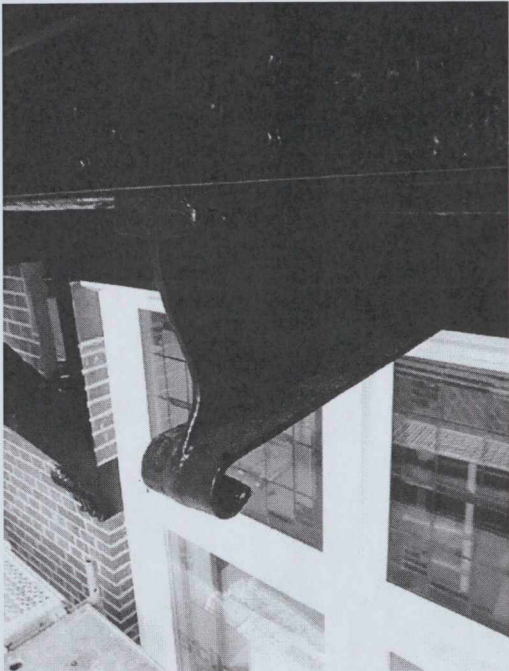
C1 B1 A1 C2 B2 A2 B5 A5 20 18 17 16 11

Patch Reference numbers on UTT

4i

Image Engineering Scan Reference Chart TE263 Serial No.

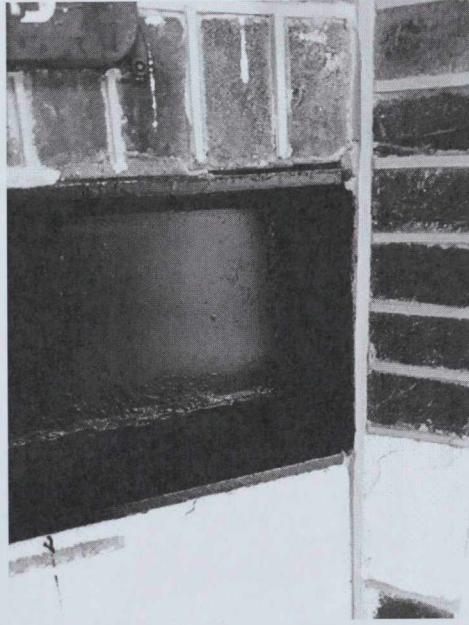
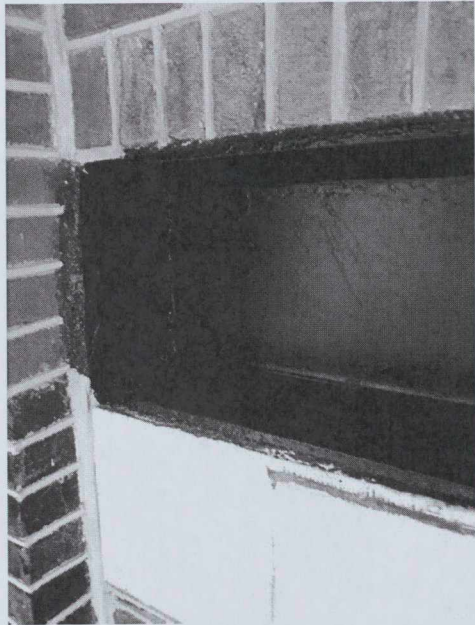
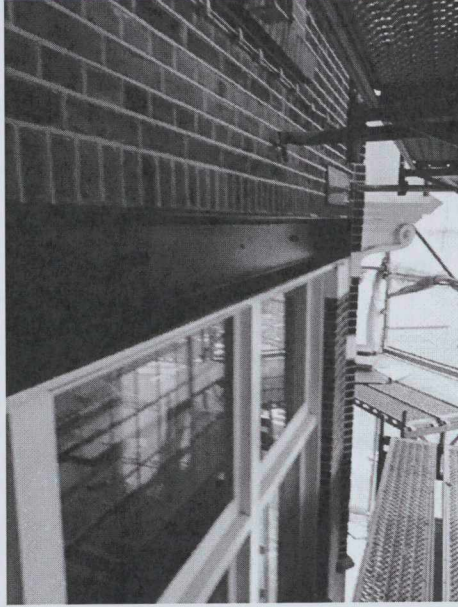
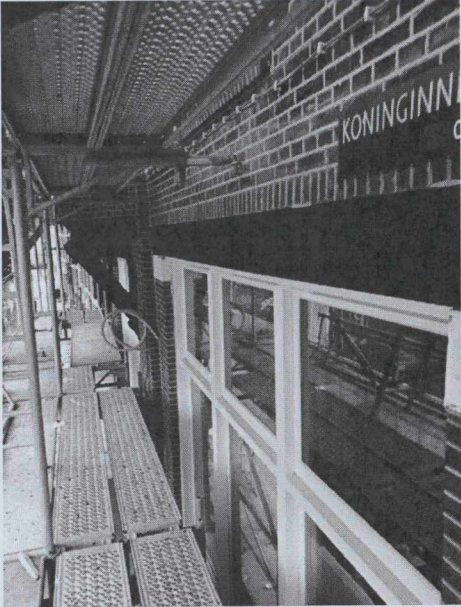
the scale towards document



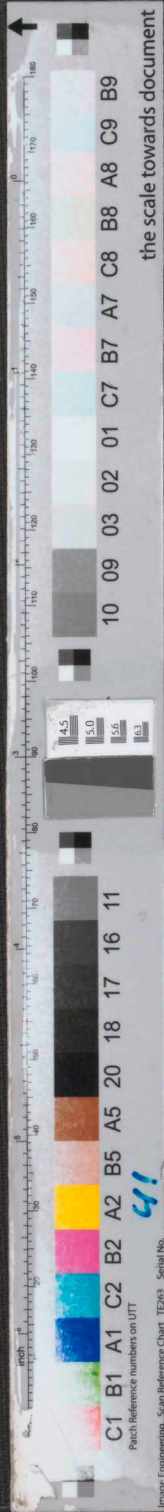
datum 11 juni 2018  
kenmerk 18321A-OPN-wilprk 220-001  
blad 5 van 7

↑  
the scale towards document  
C1 B1 A1 C2 B2 A2 B5 A5 A20 18 17 16 11  
10 09 03 02 01 C7 B7 A7 C8 B8 A8 C9 B9  
4.5 5.0 5.6  
Patch reference numbers on UTT  
Imaje Engineering Scan Reference Chart TE263 Serial No.

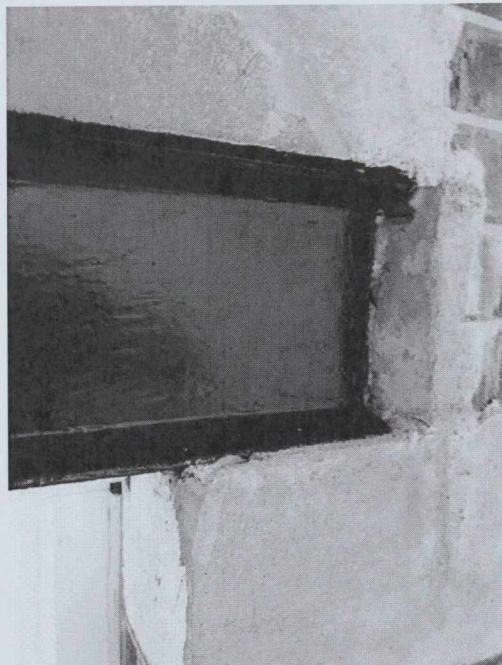
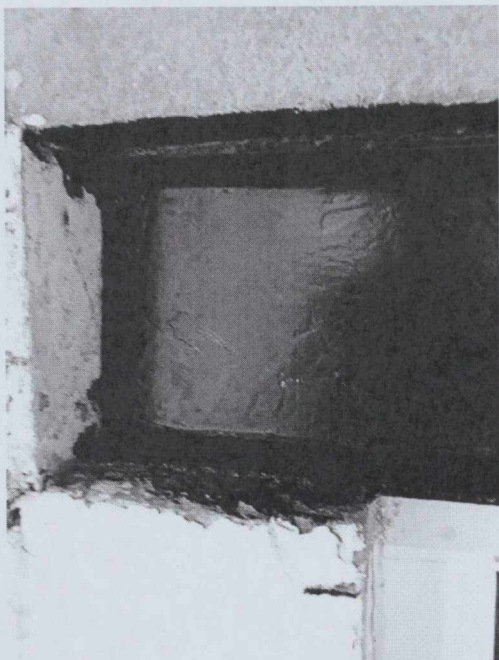
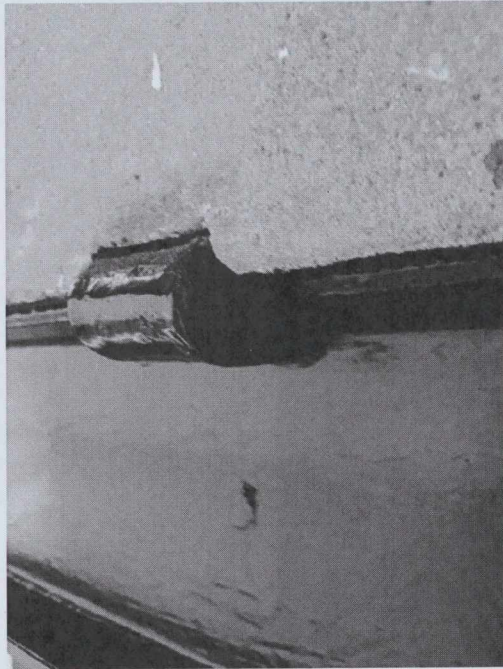
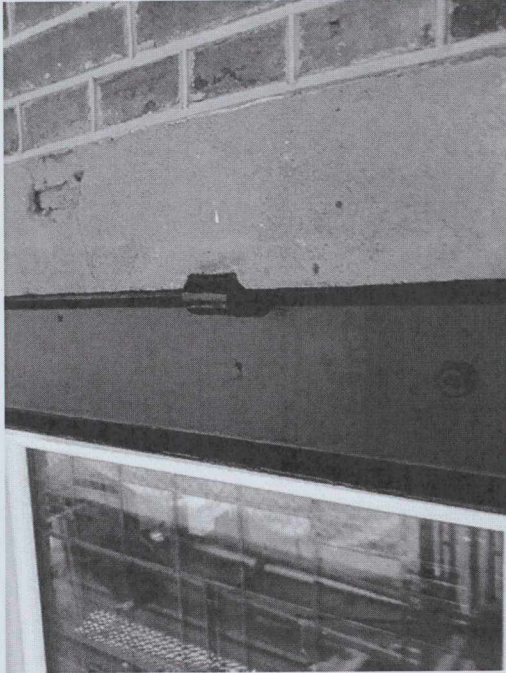
Foto; latei zijde Koninginneweg



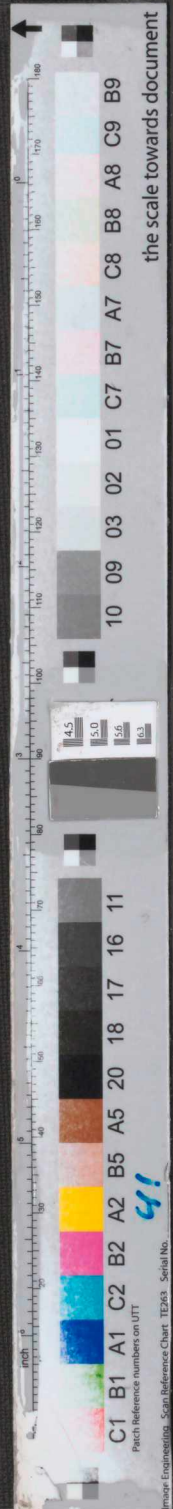
datum 11 juni 2018  
kenmerk 18321A-OPN-wilprk 220-001  
blad 6 van 7



Foto, latei zijde Willemsparkweg



datum 11 juni 2018  
kenmerk 18321A-OPN-wilprk 220-001  
blad 7 van 7





4.5 5.0 5.6 6.3

10 09 03 02 01 C7 B7 A7 C8 B8 A8 C9 B9

C1 B1 A1 C2 B2 A2 B5 A5 20 18 17 16 11

Patch Reference numbers on UTT

41

Image Engineering Scan Reference Chart TERN5 Serial No.

the scale towards document



↑

1000 900 800 700 600 500 400 300 200 100 0

10 09 03 02 01 C7 B7 A7 C8 B8 A8 C9 B9

4.5 5.0 5.5 6.0

11 16 17 18 20 A5 B5 A2 B2 C2 B1 A1 C1

4i

Patron reference numbers on UTT  
Image Engineering Scan Reference Chart TE963 Serial No.

the scale towards document