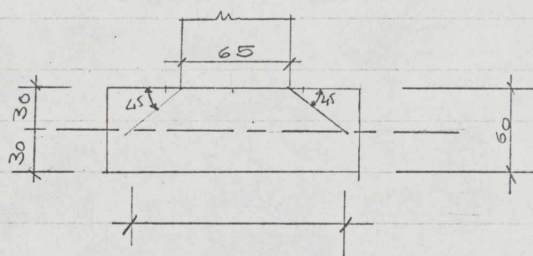
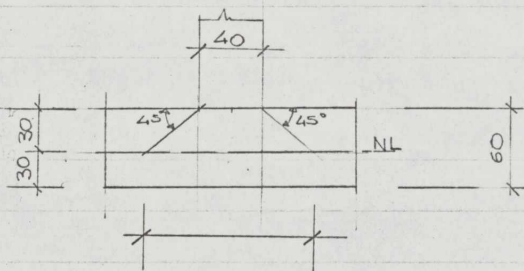
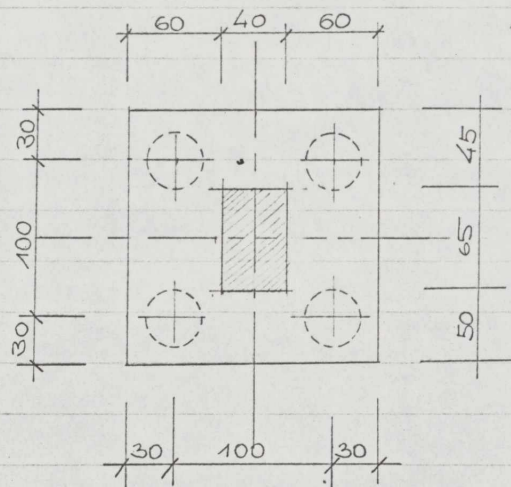


Poer B-2

afmeting:



$$l_1 = 40 \text{ cm} ; \quad l_2 = 40 + 2 \times 30 = 100 \text{ cm} ; \quad l_3 = 160 \text{ cm} ;$$

$$b_1 = 65 \text{ cm} ; \quad b_2 = 65 + 2 \times 30 = 125 \text{ cm} ; \quad b_3 = 160 \text{ cm} ;$$

$$P_{\text{total}} = 106672 \text{ kg}$$

$$q_b = \frac{106672}{100 \times 125} = 8,50 \text{ kg/cm}^2 \quad (\text{hor.})$$

$$q_v = \frac{53336}{160 \times 60 \times 0,95} = 5,56 \text{ kg/cm}^2 \quad (\text{vertical})$$