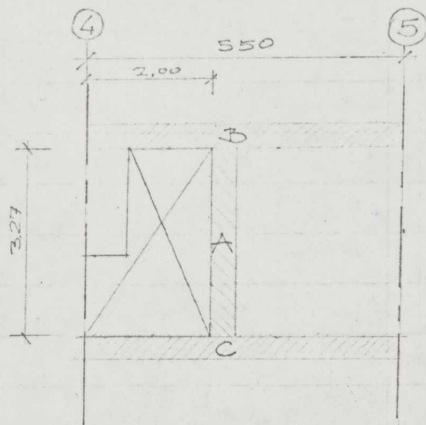


QR40; K225; 803-141

Plaat tussen as A en C/D



Strook A

Belasting

$$e_g + n_b \quad 3.50 \times \frac{1}{2} \times 870 \quad q = 1550 \text{ kg/m}^1$$

$$R_A = R_B = 3.30 \times 1550 \times 0.5 = 2550 \text{ kg}$$

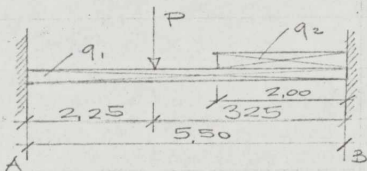
$$M_{\max} = 1550 \times 3.30^2 \times \frac{1}{2} = \underline{1410 \text{ kgm}}$$

Strook breedte 50 cm $h = 16.5 \text{ cm}$

$K = 0.315$; $w = 0.495$; $A = 4.10 \text{ cm}$

toegepast $4 \phi 12$ onder en boven!

Strook B breedte 1,00 m.



Belasting:

$$e_g + n_b \quad 2.18 \times \frac{1}{2} \times 870 \quad q_1 = \underline{940 \text{ kg/m}^1}$$