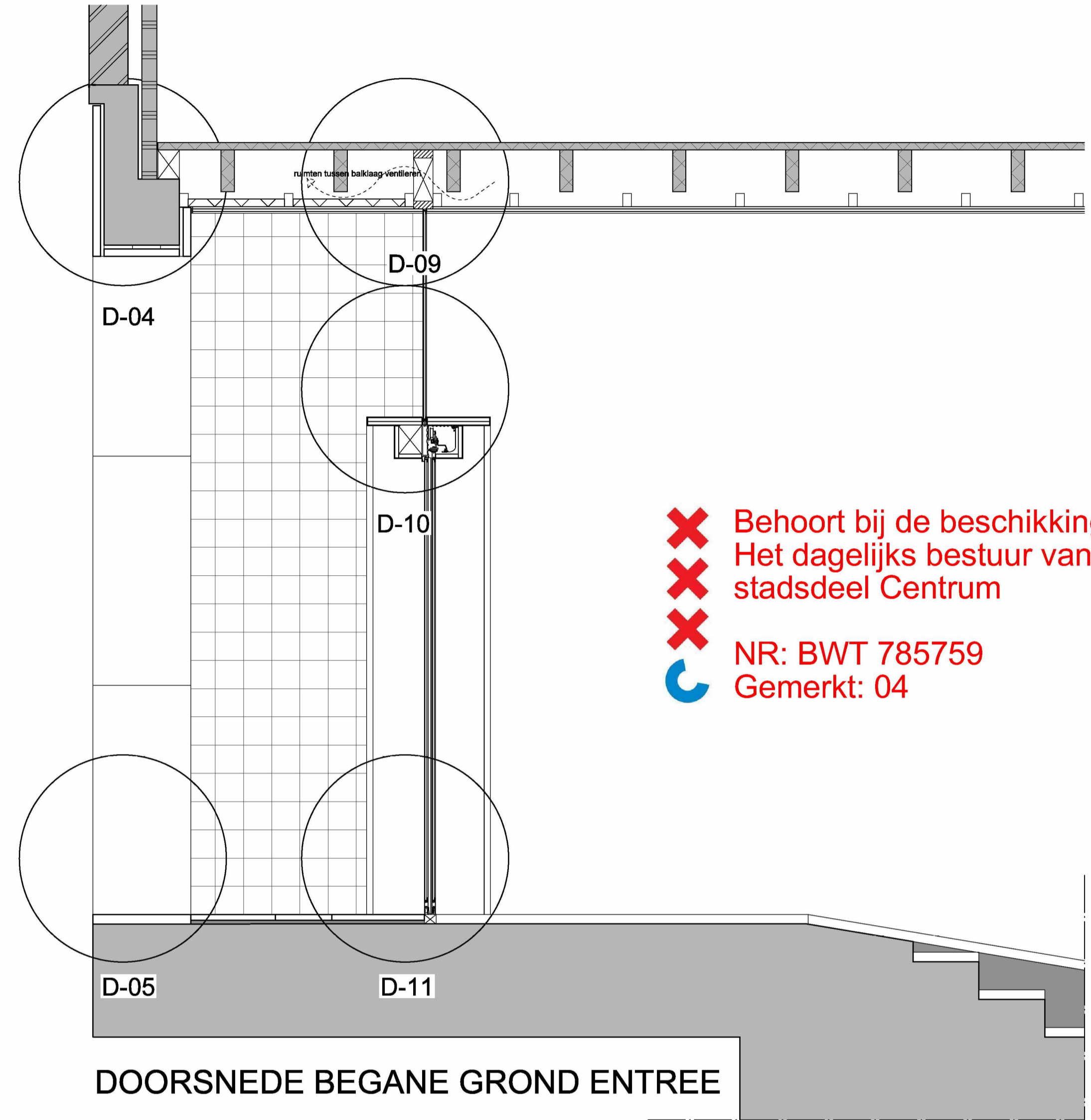
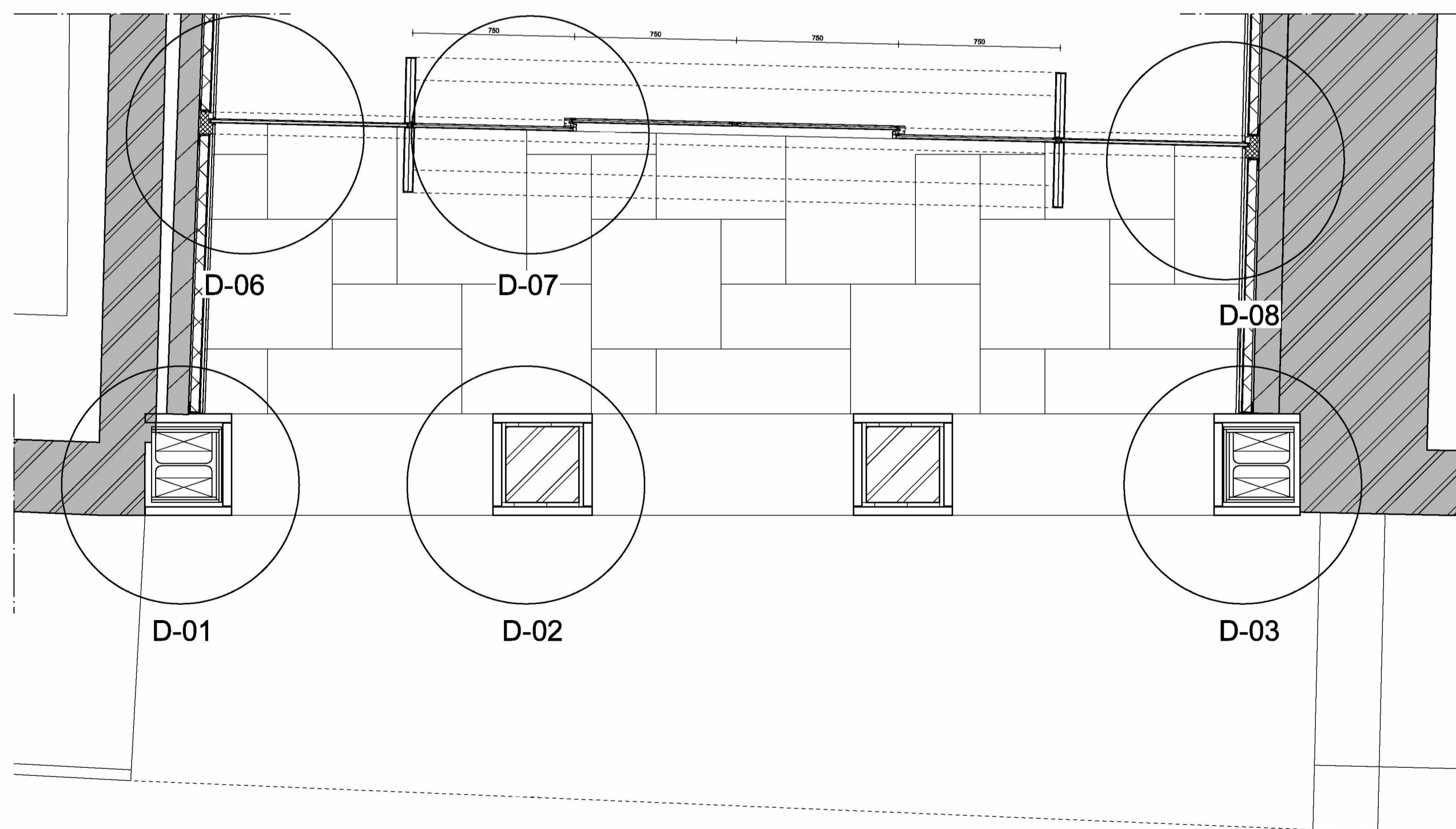


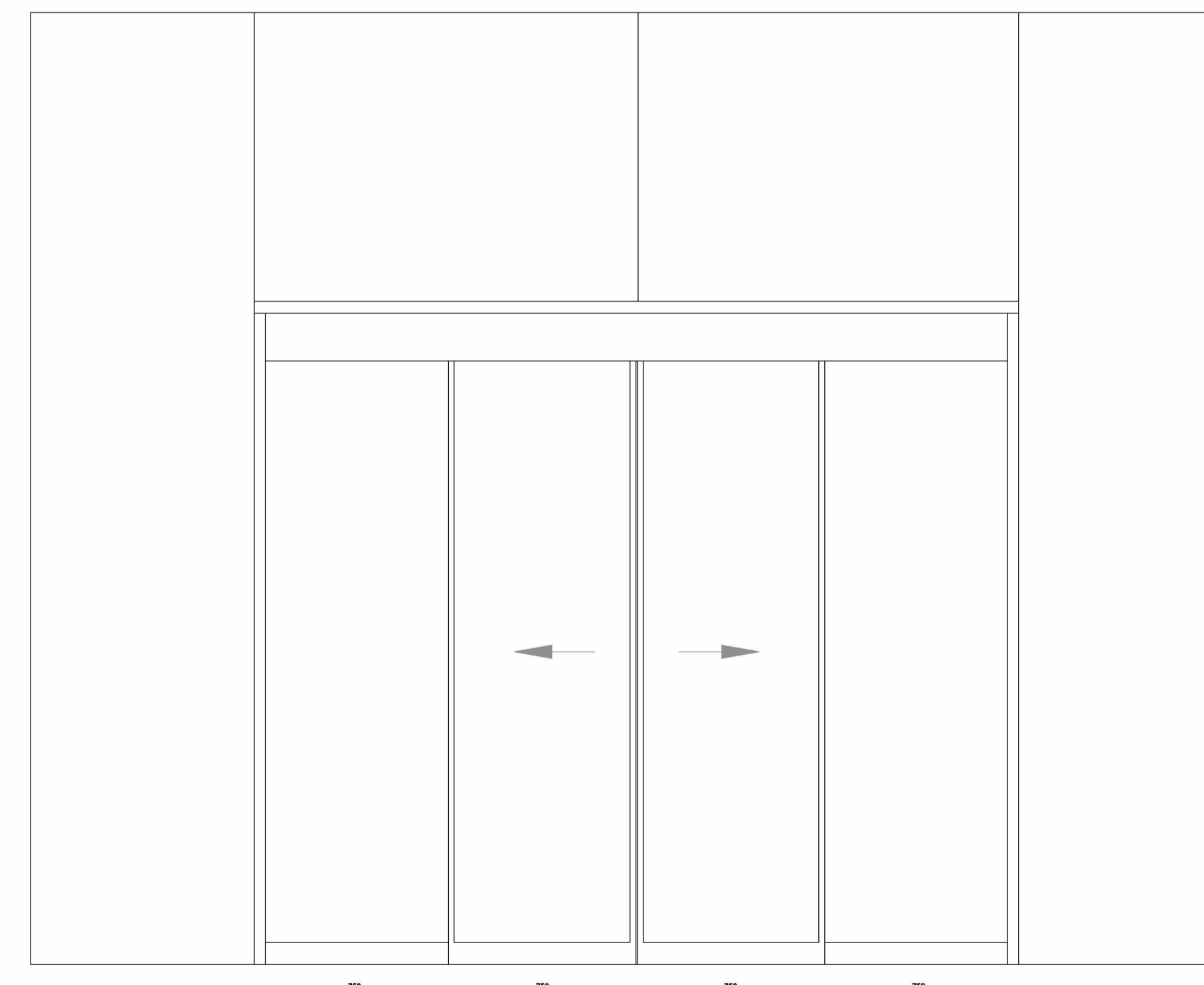
AANZICHT VOORGEVEL



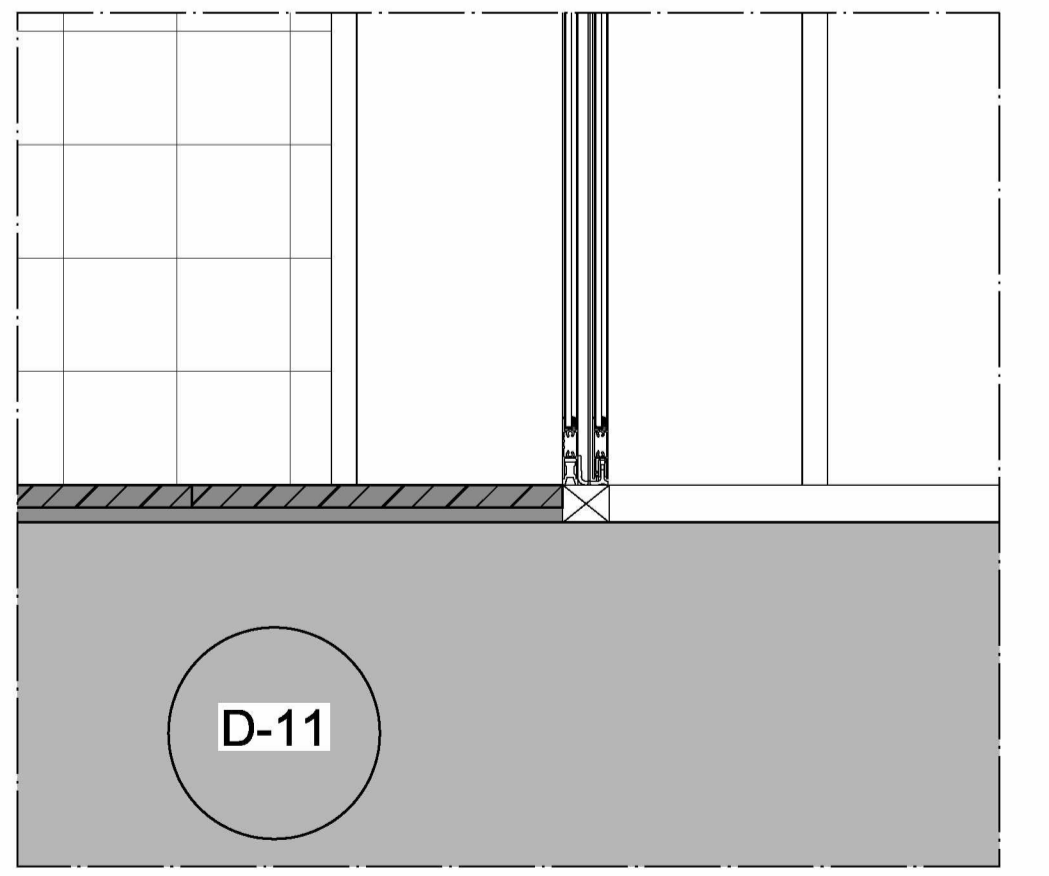
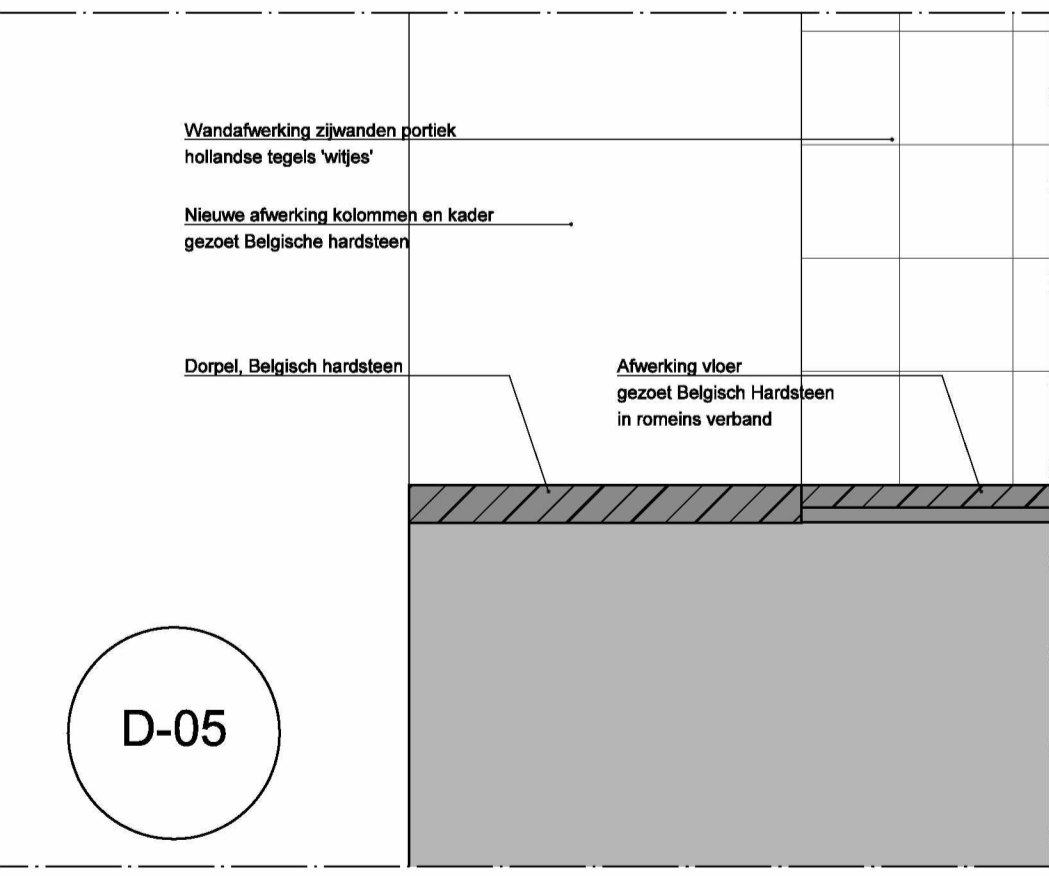
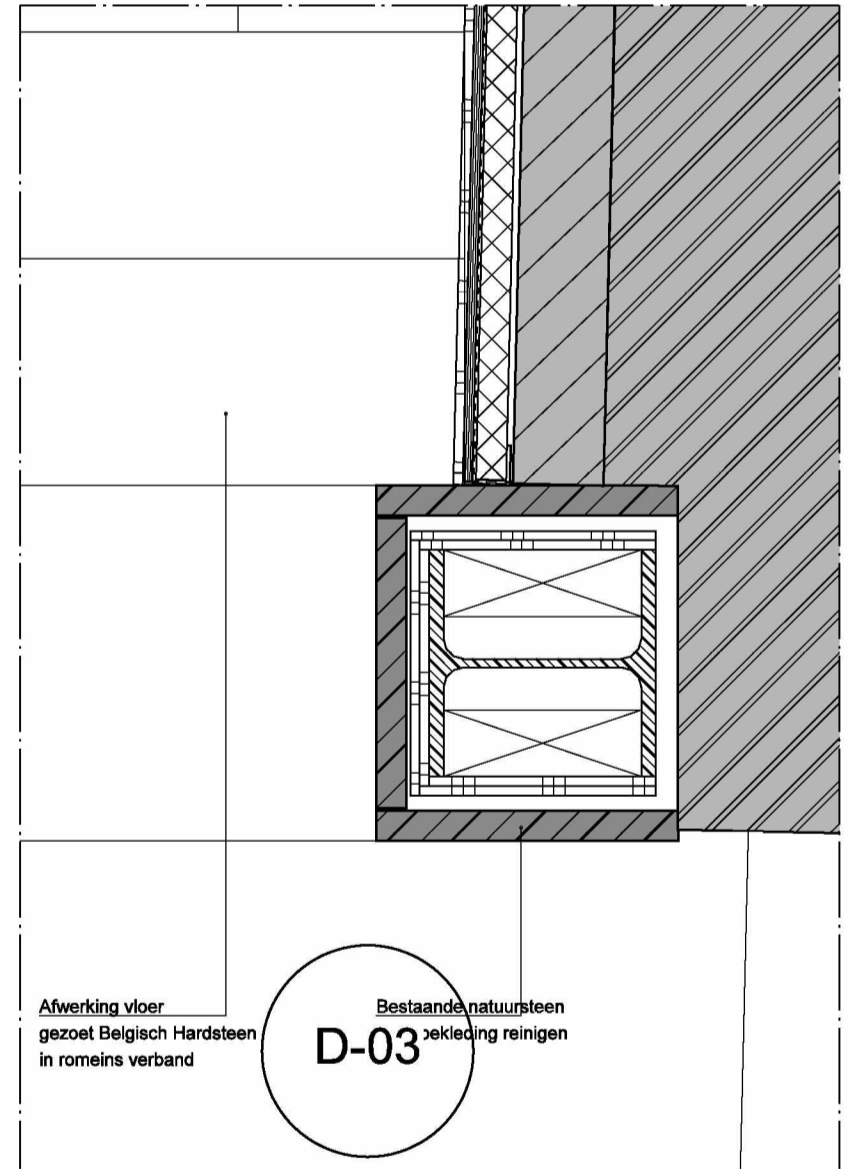
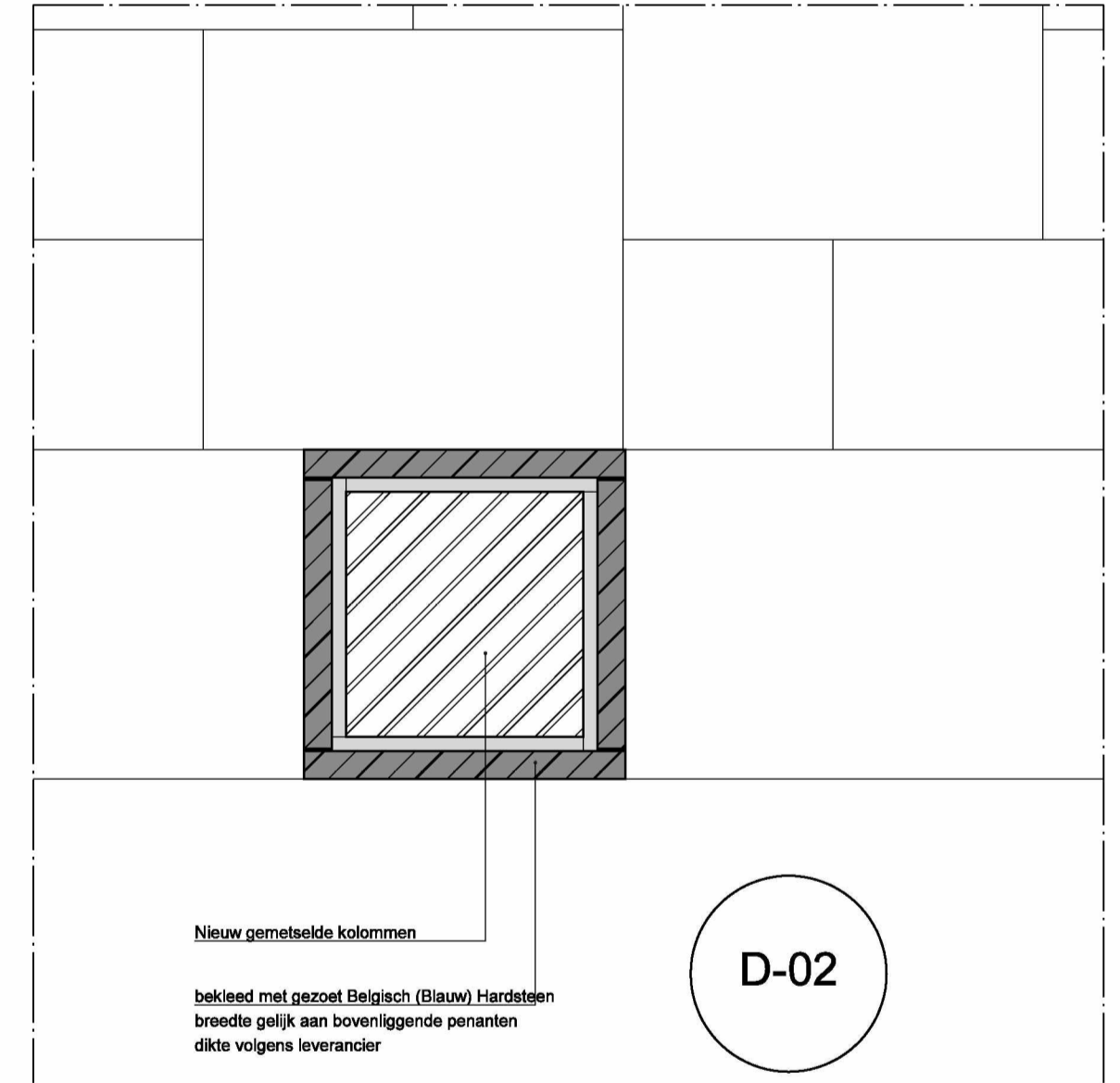
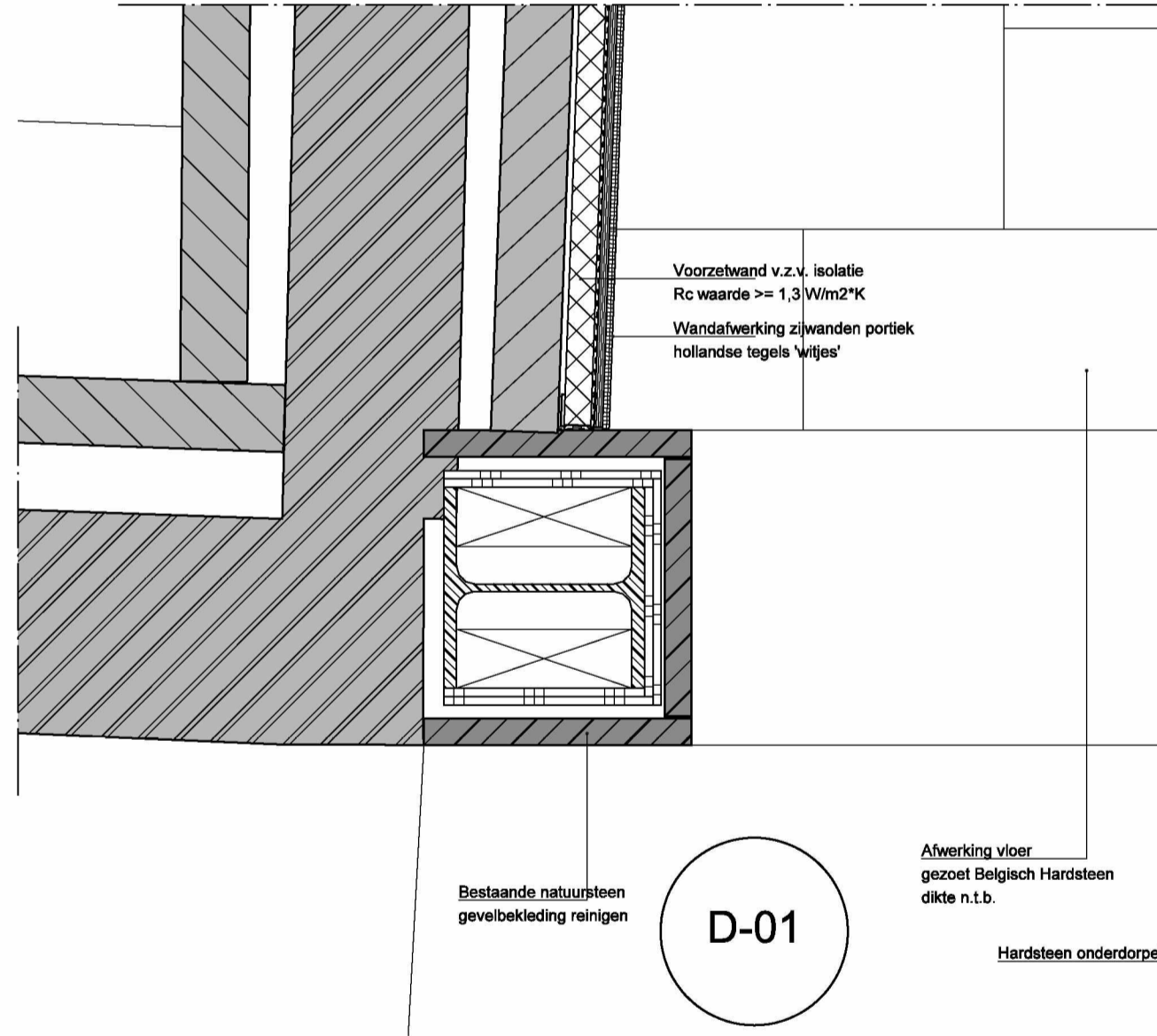
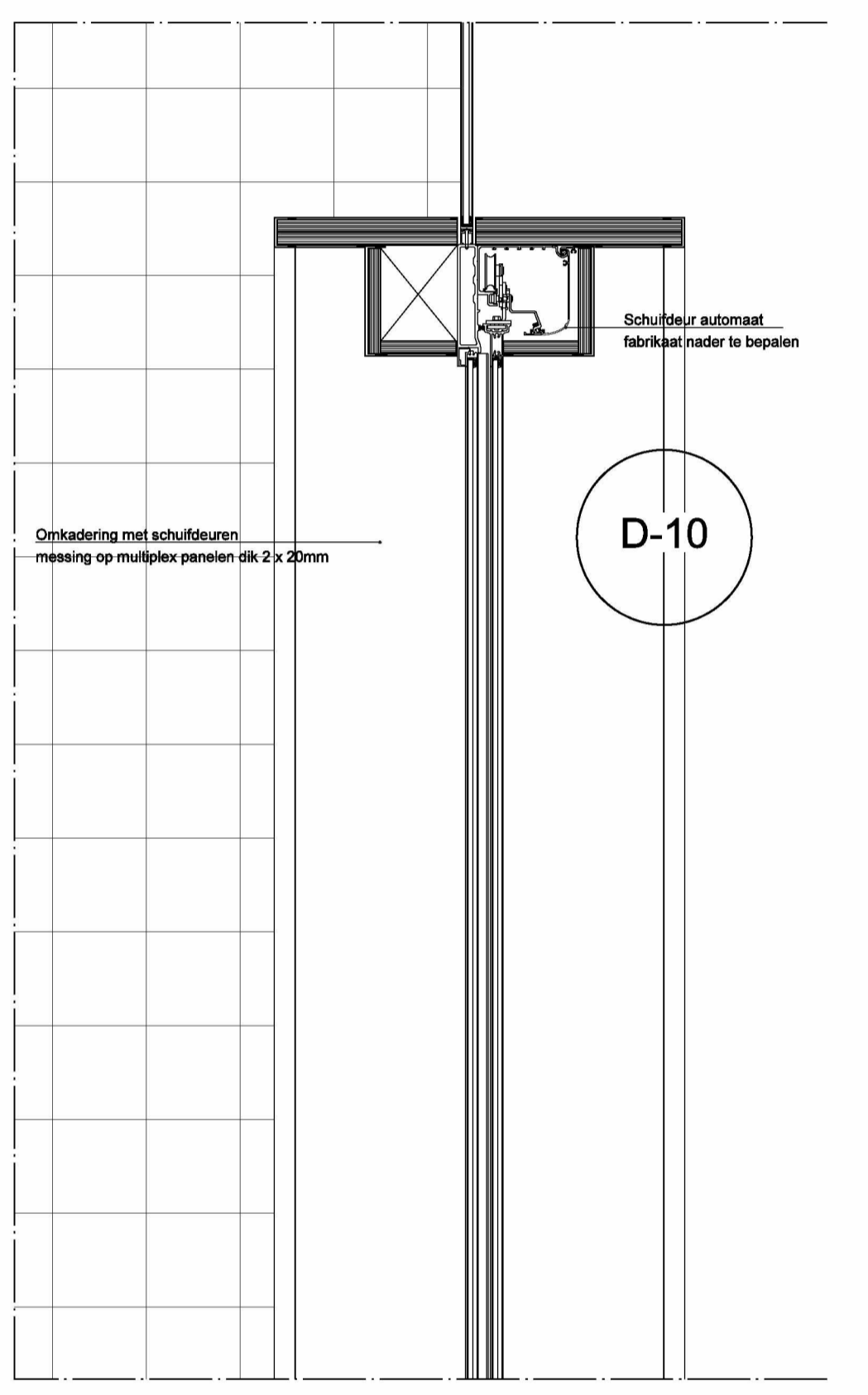
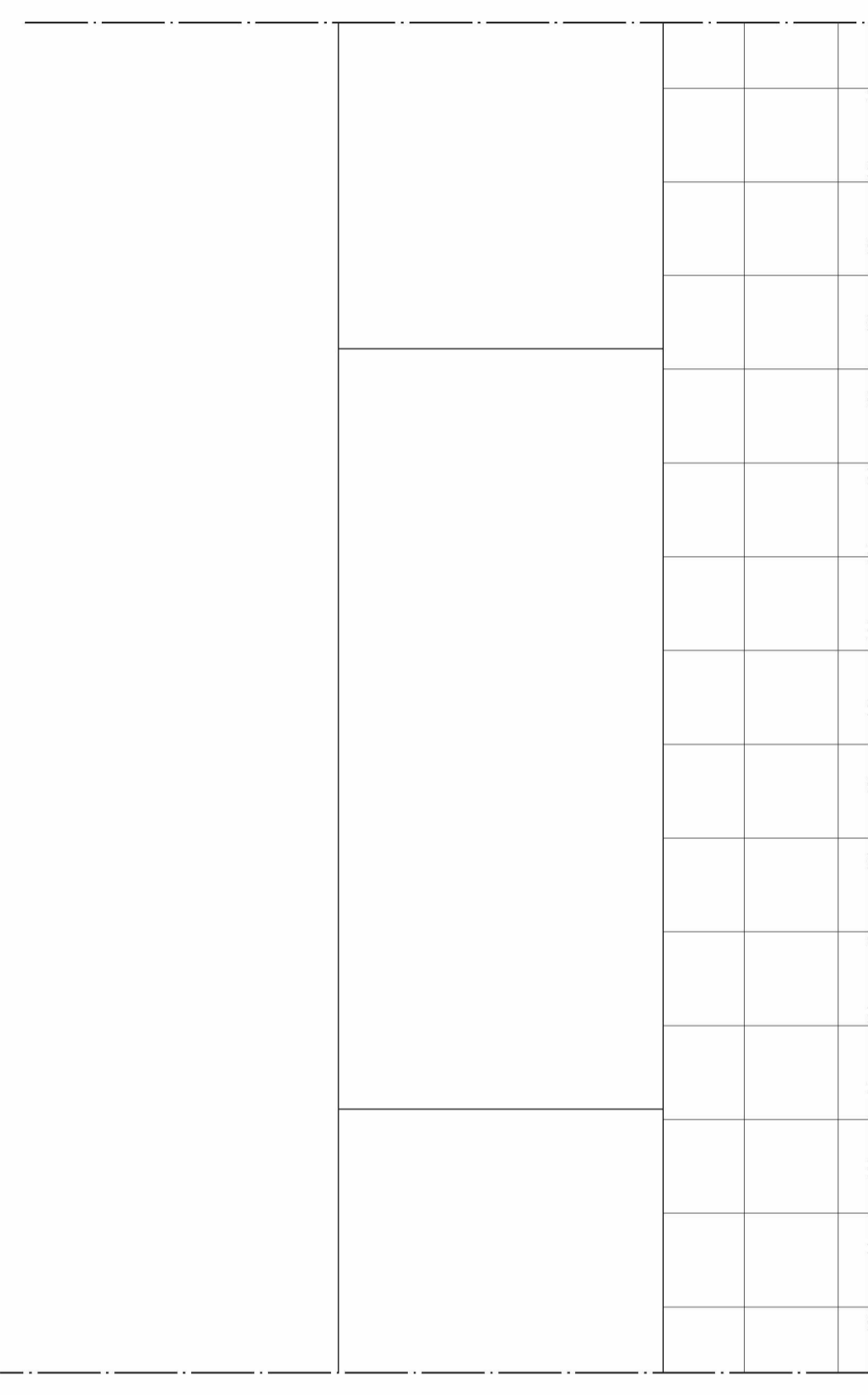
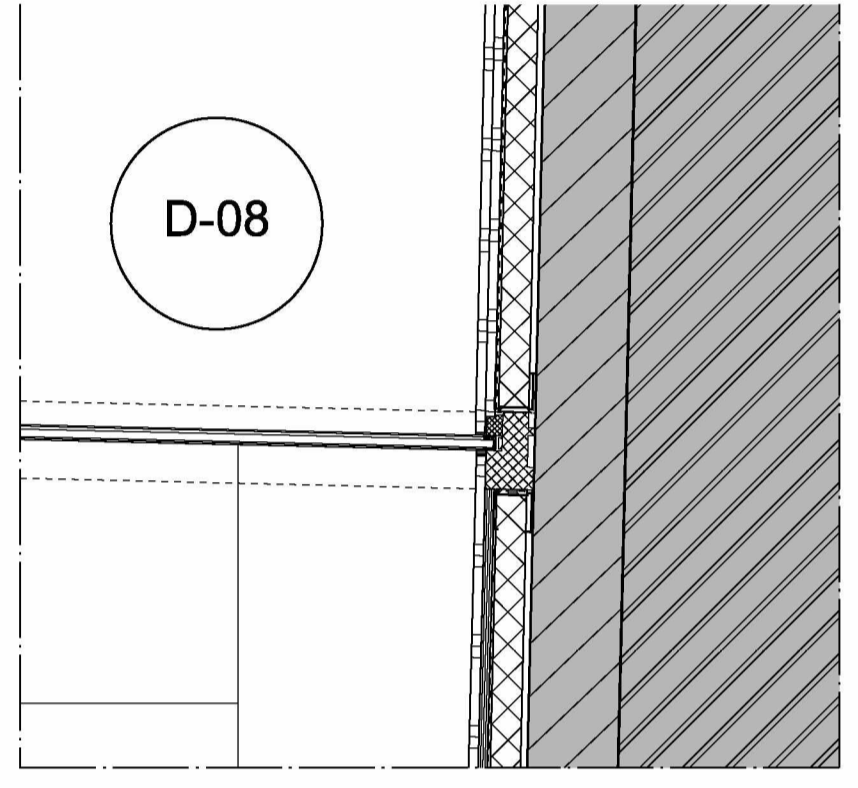
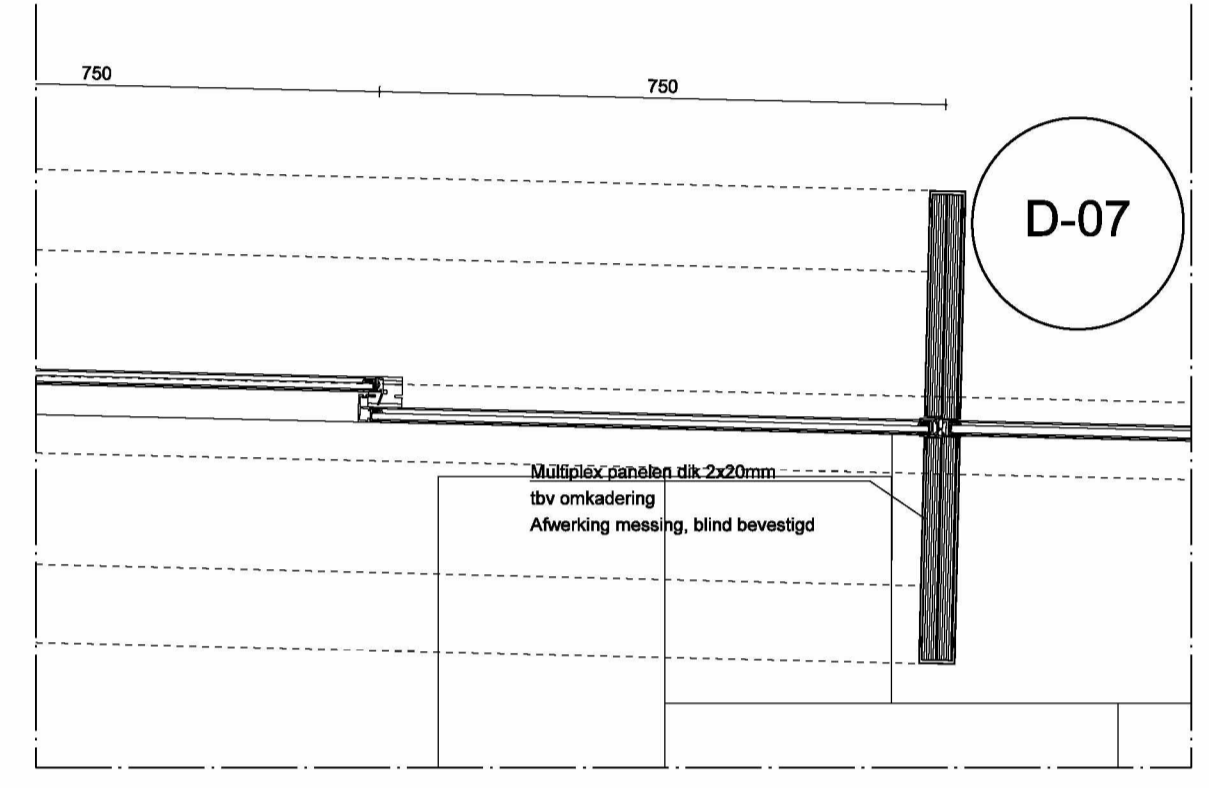
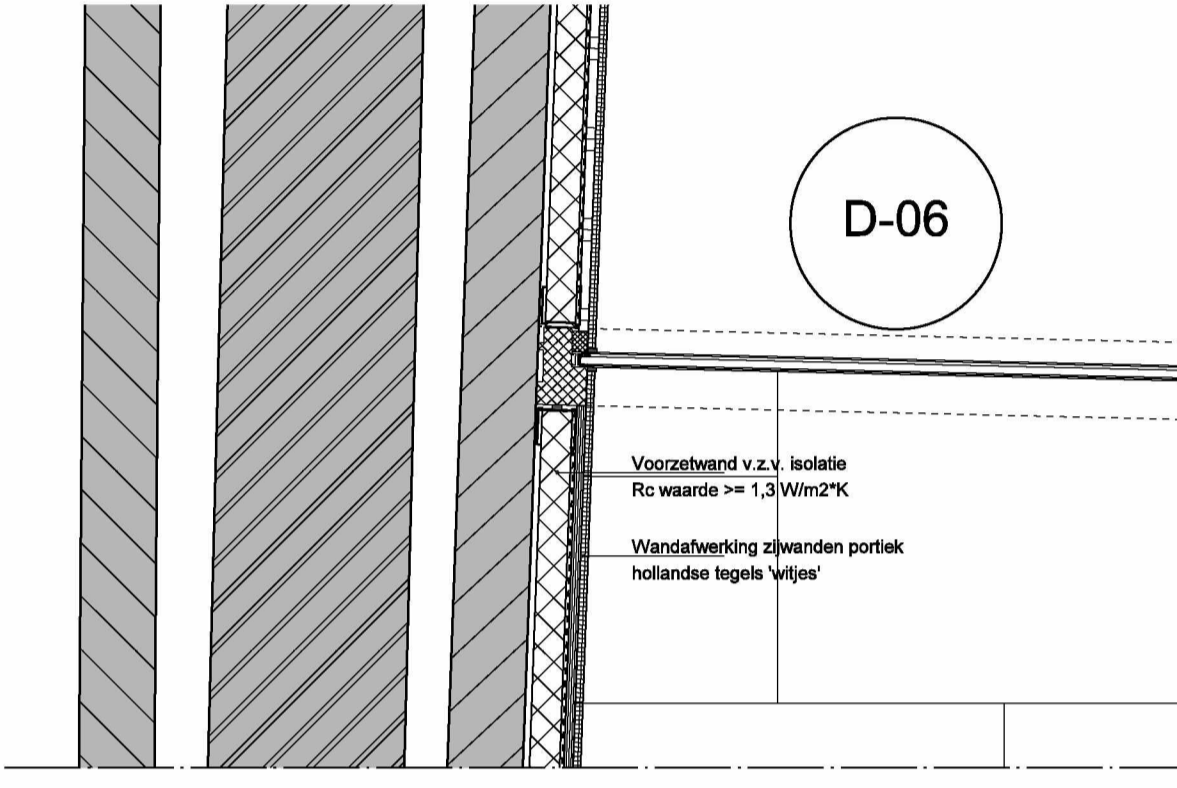
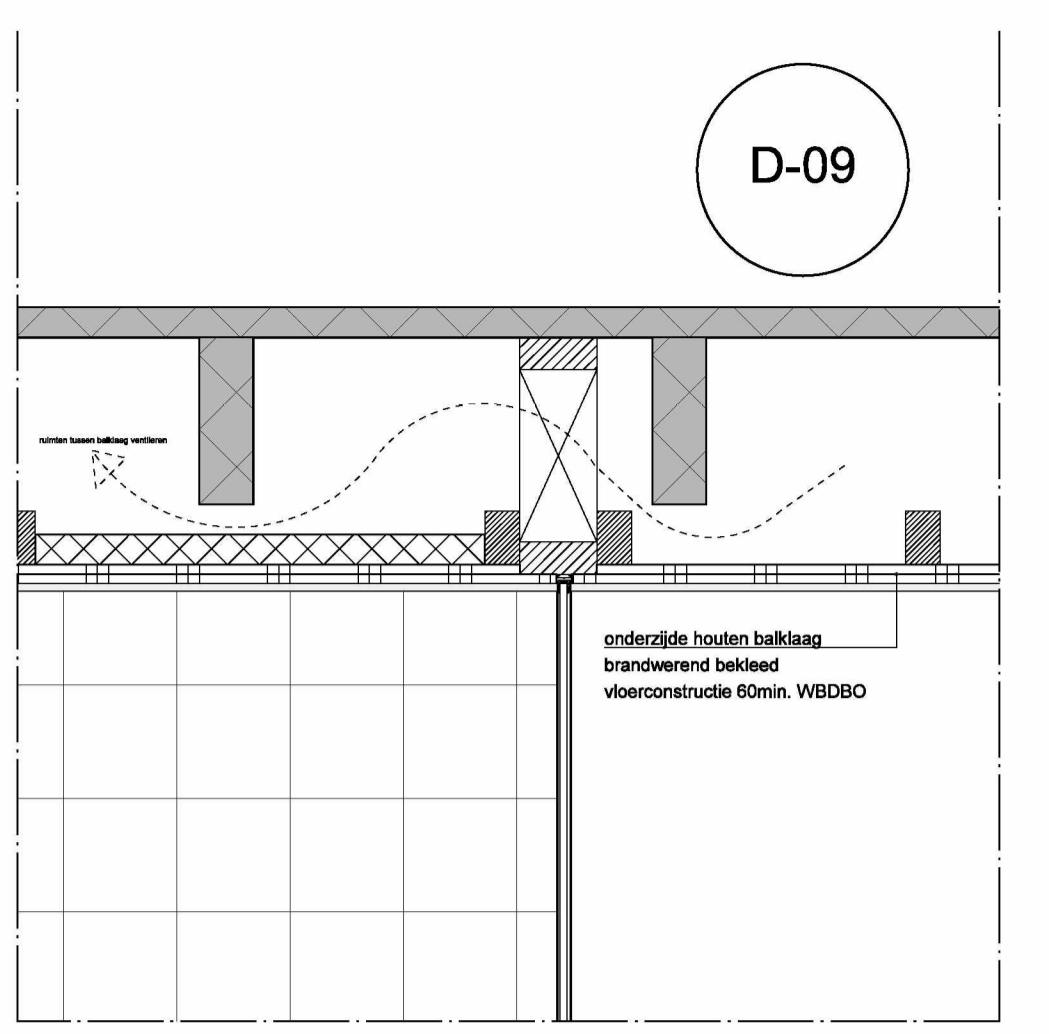
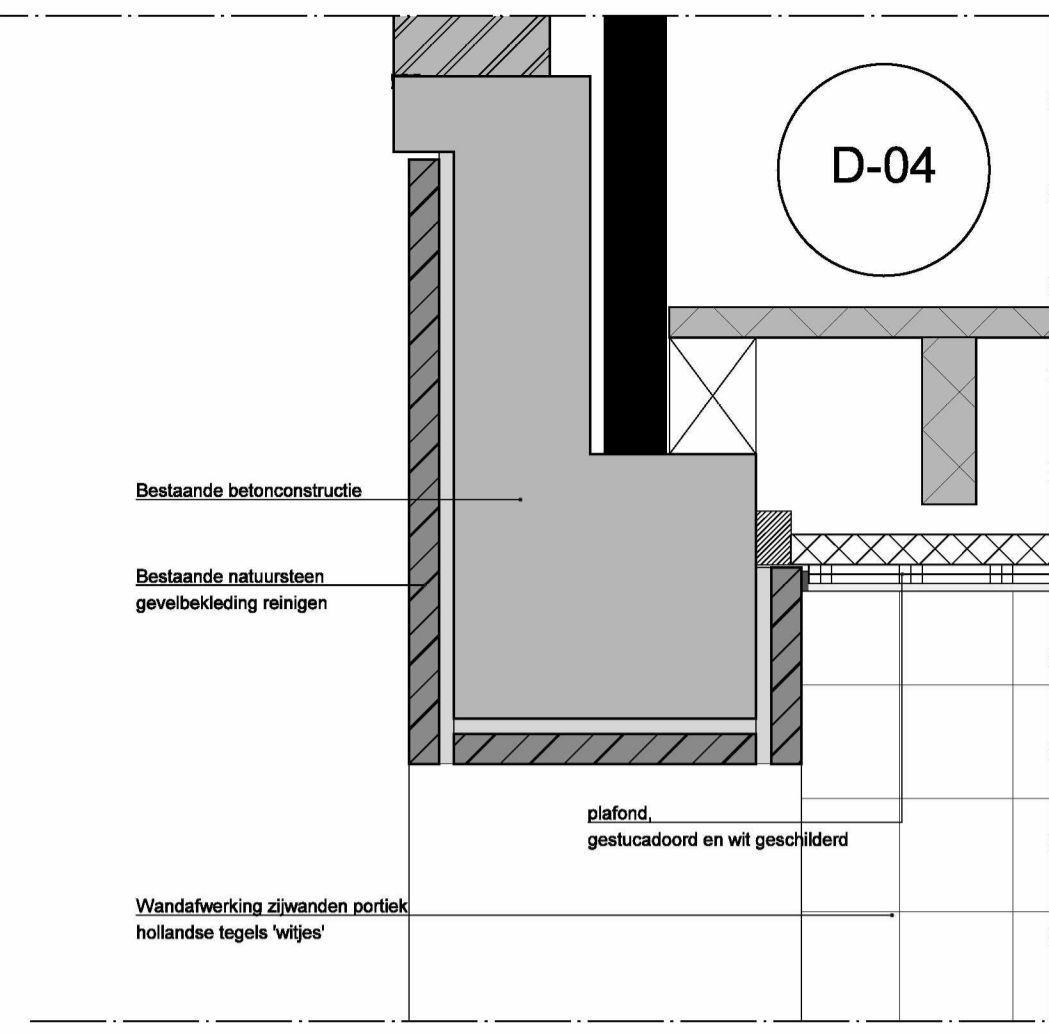
DOORSNEDE BEGANE GROND ENTREE



PLATTEGROND BEGANE GROND ENTREE



AANZICHT GLAZEN PUI



Alle maten dienen in het werk te worden gecontroleerd

concrete oudzijds achterburgwal 78a 1012 dr amsterdam the netherlands +31(0)20 5200 200 info@concreteamsterdam.nl www.concreteamsterdam.nl
BOPARAI ASSOCIATES architecten

Jacob Corneliszstraat 1 | 1011 BK Oostzaan | +31(0)75 6555555 | www.boparai.nl | office@boparai.nl

Datum: 26-03-2013
 Project: Verbouwing Nieuwezijds Voorburgwal 67
 Onderwerp: Begane grond gevelpui, details
 Opdrachtgever: Accor
 Projectstatus: Nieuwe toestand
 Ontwerp: concrete
 Getekend: BB - RW
 Projectnummer: 339

Schaal: 1:10/A1
 Tekeningnummer: 412-b