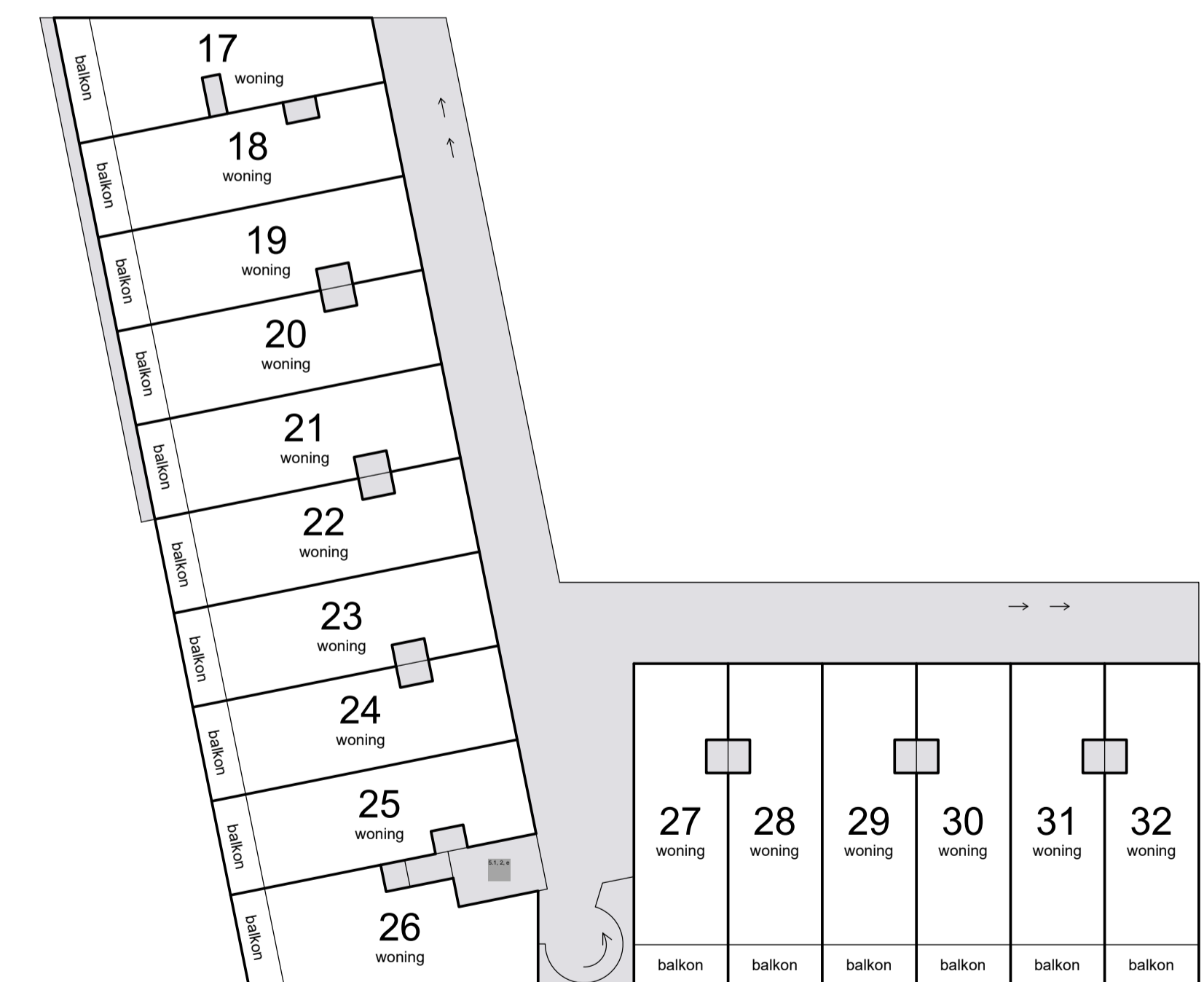
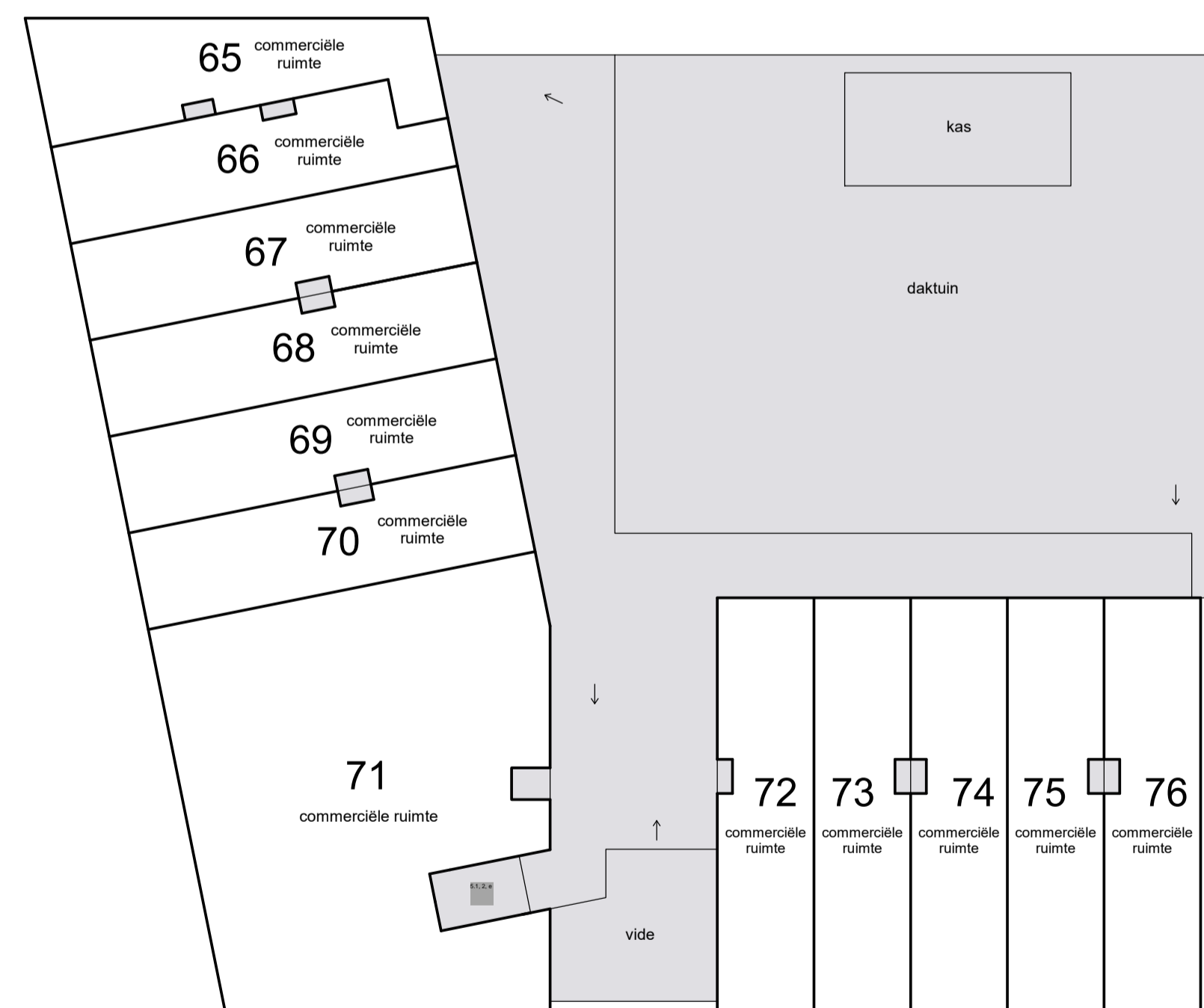
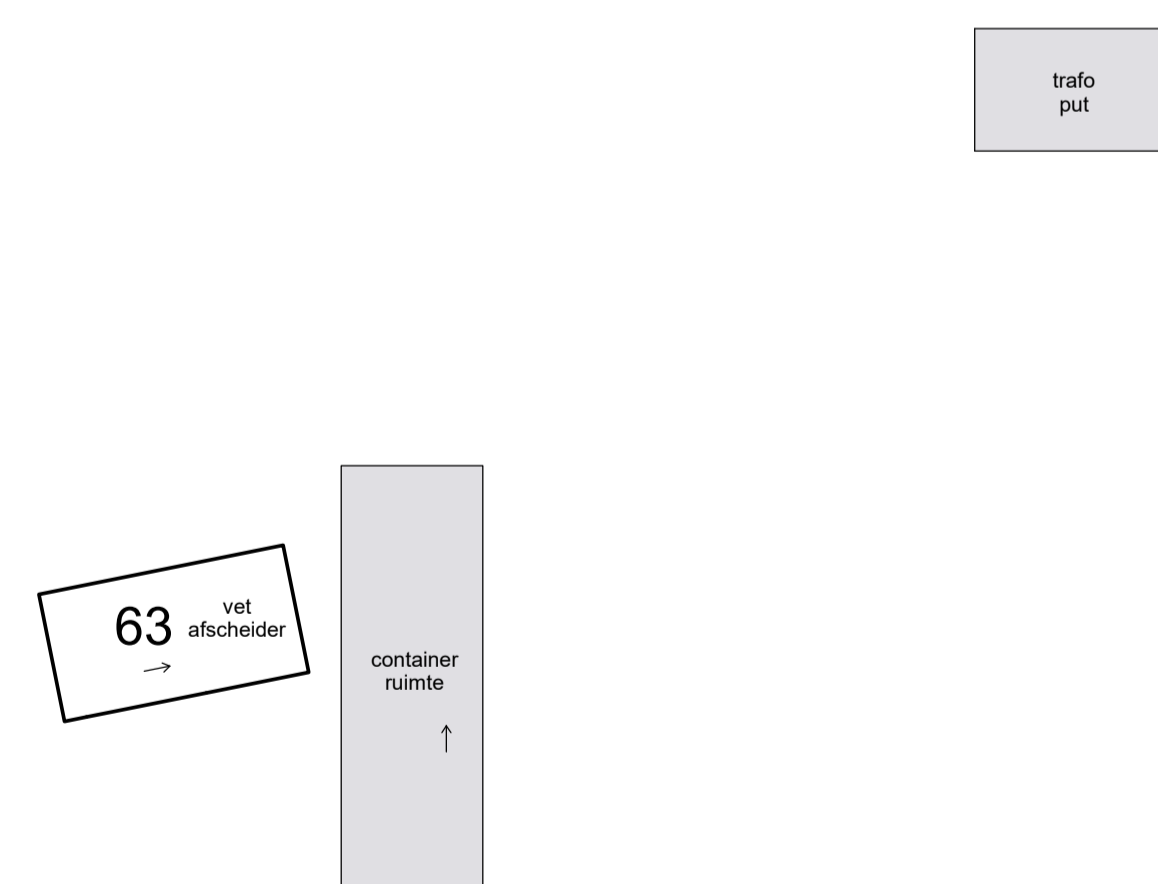
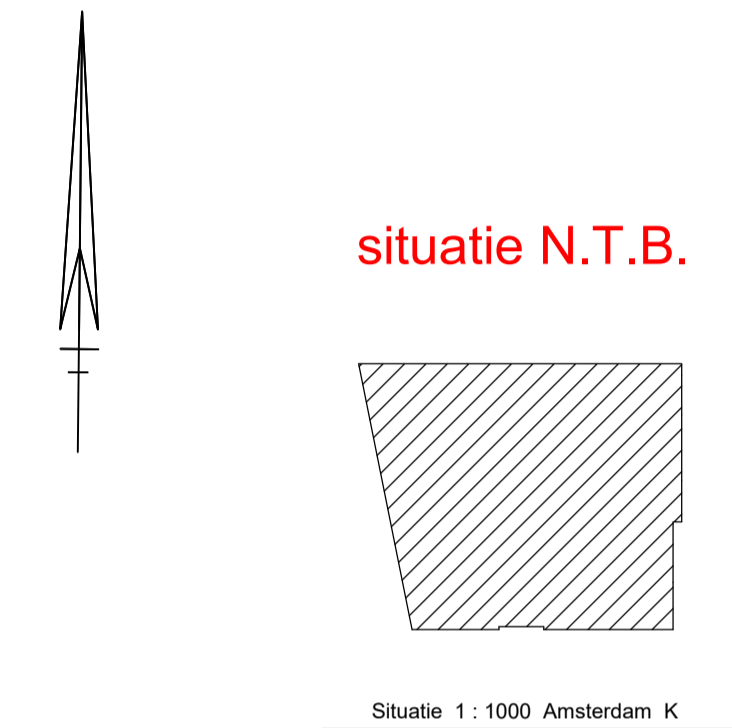
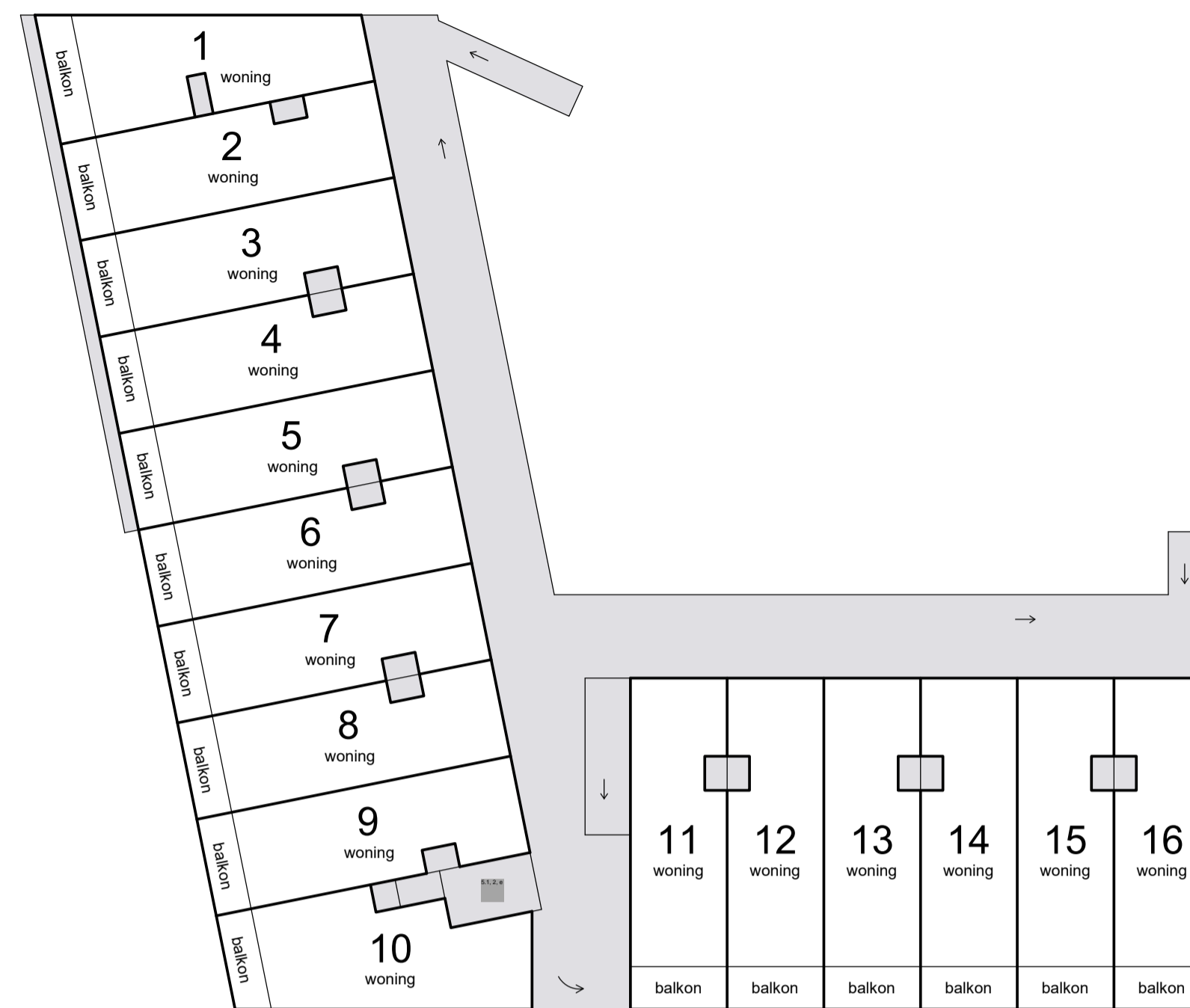
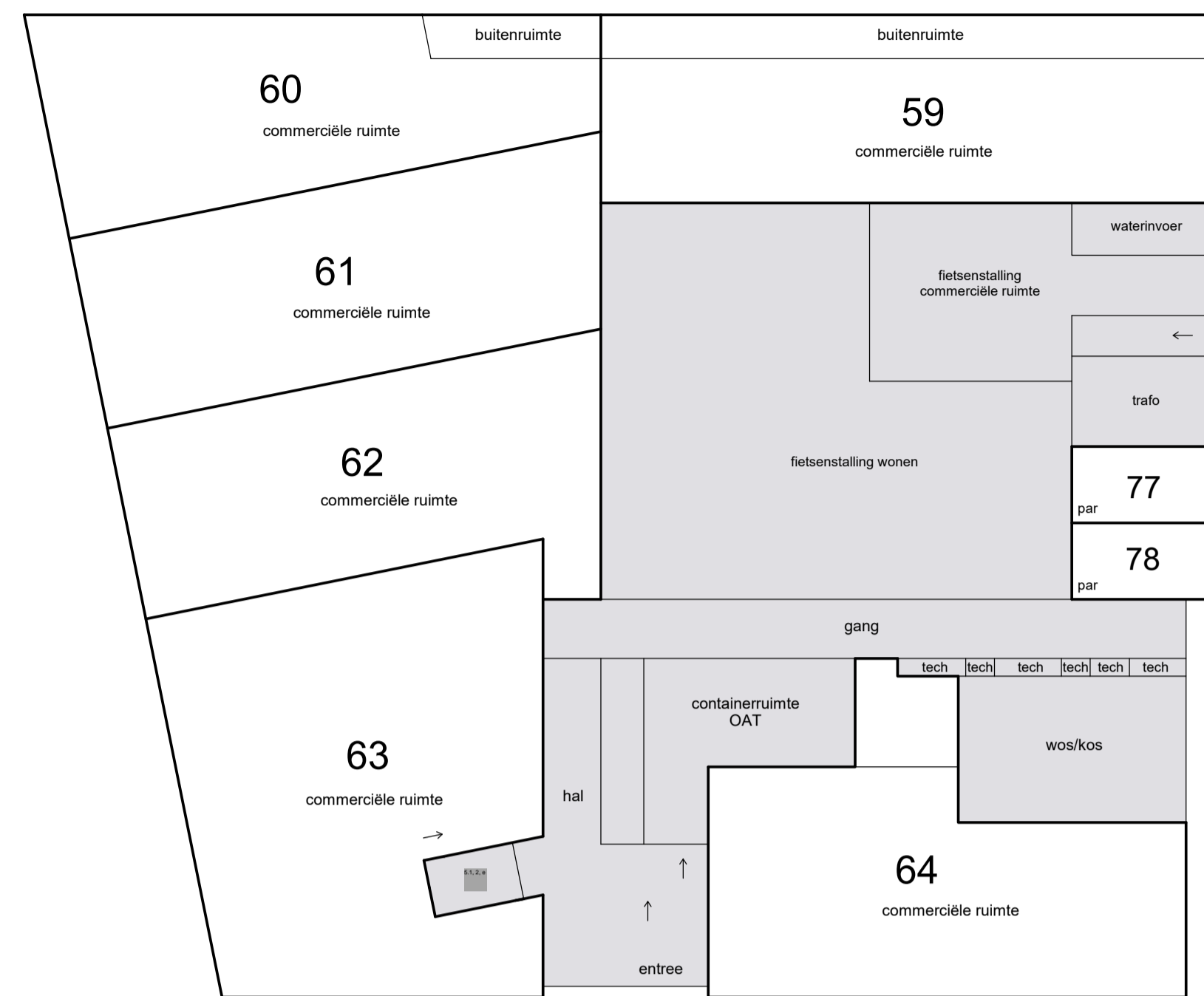
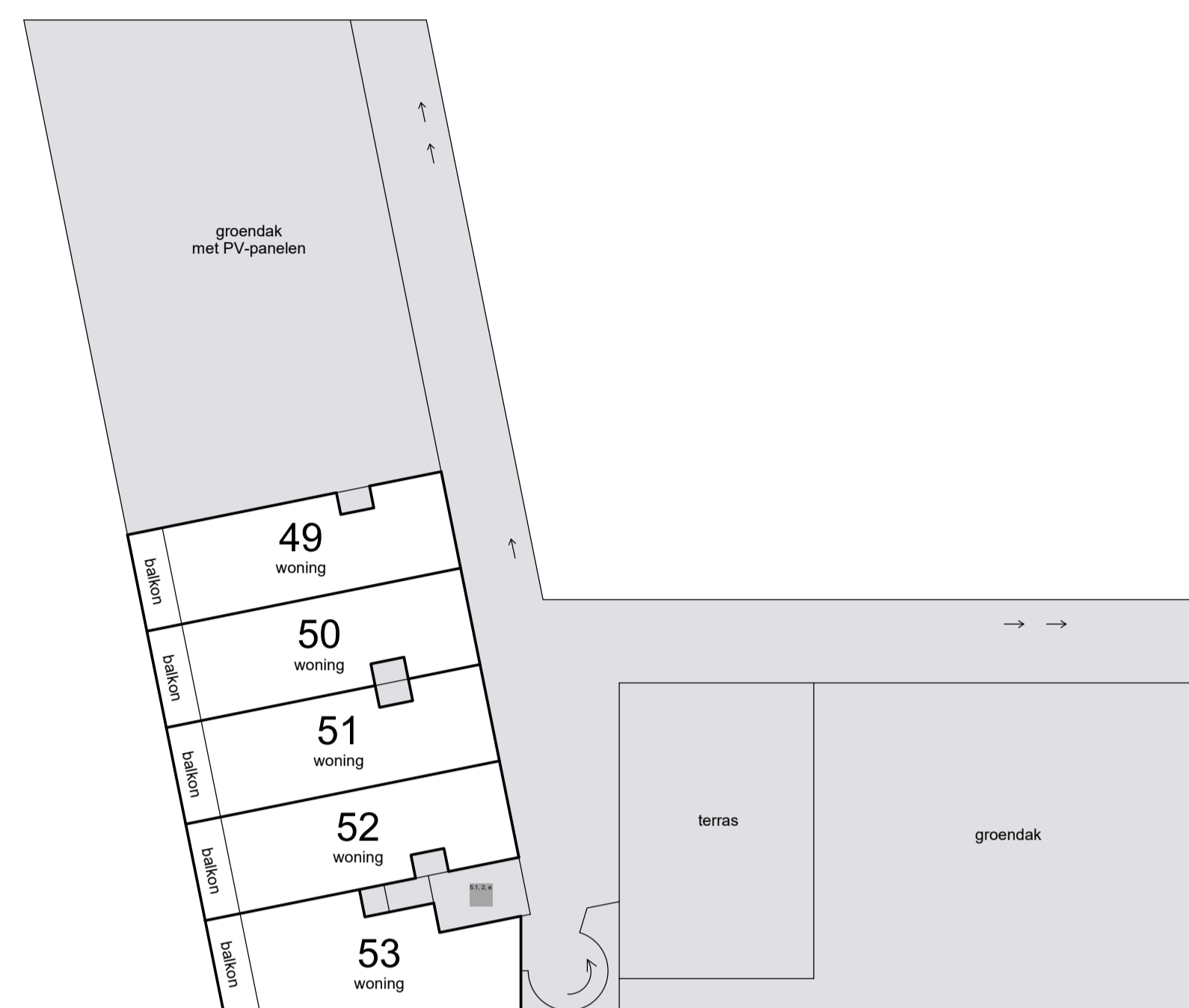


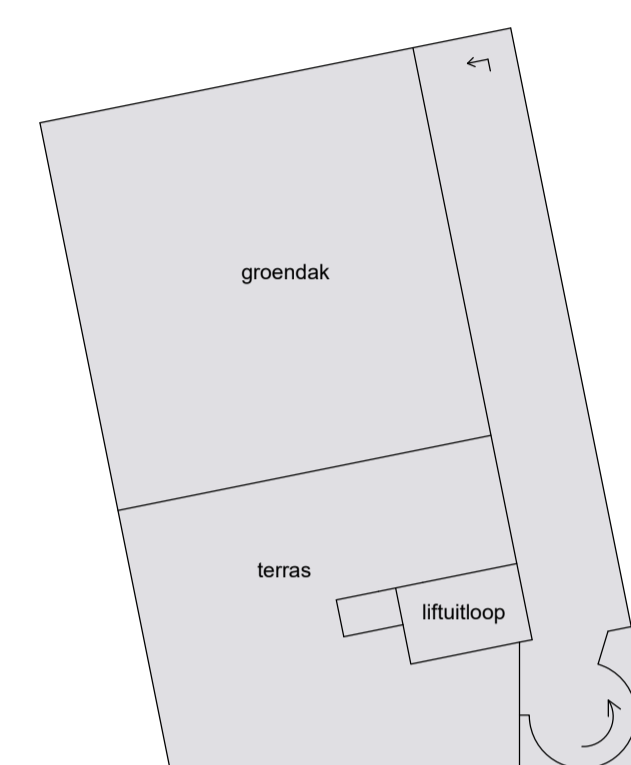
Schaal 1 : 200
 = Gemeenschappelijk
 Tekening bestaat uit 2 bladen
 Blad 1



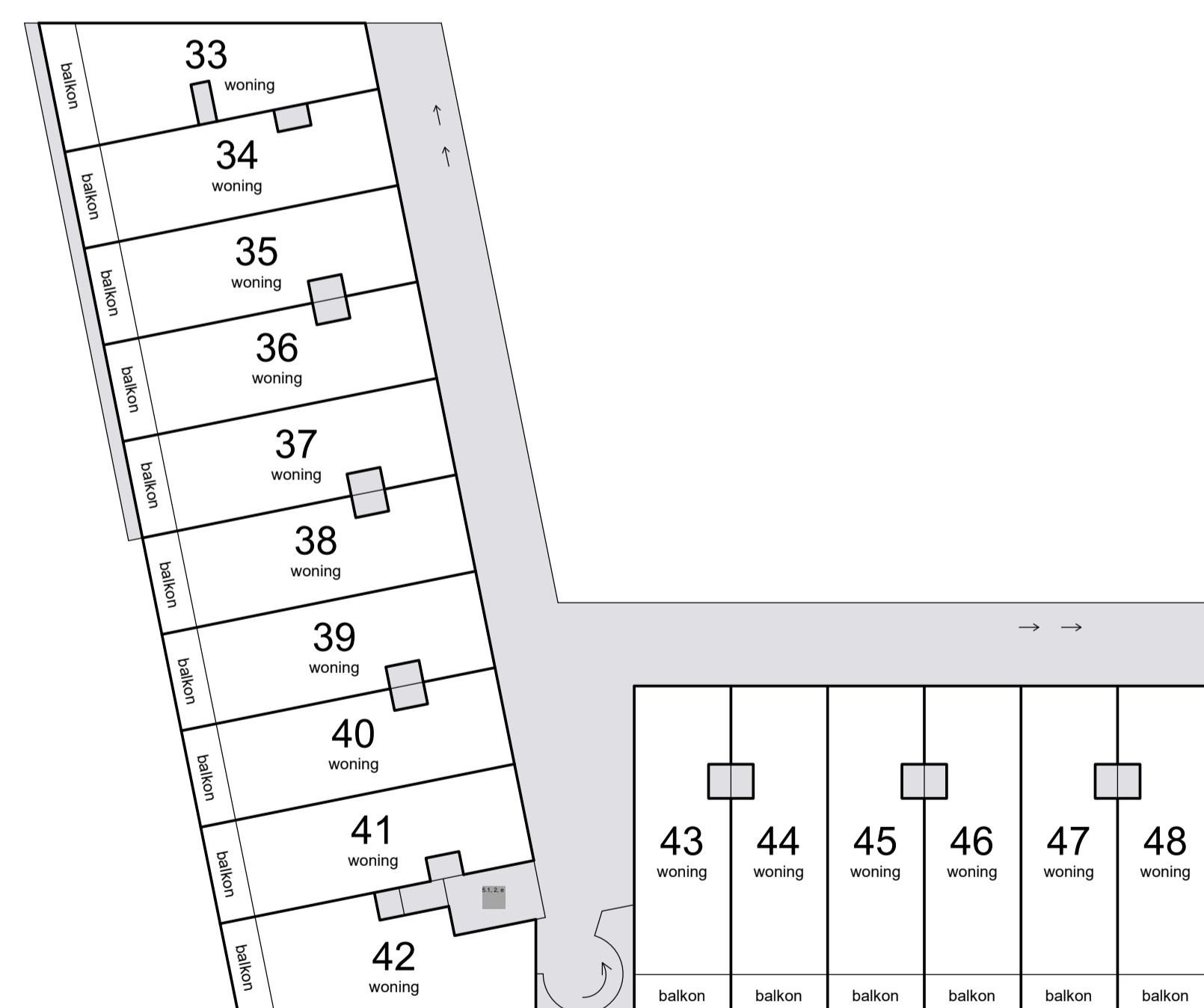
Schaal 1 : 200
 □ = Gemeenschappelijk
 Tekening bestaat uit 2 bladen
 Blad 2



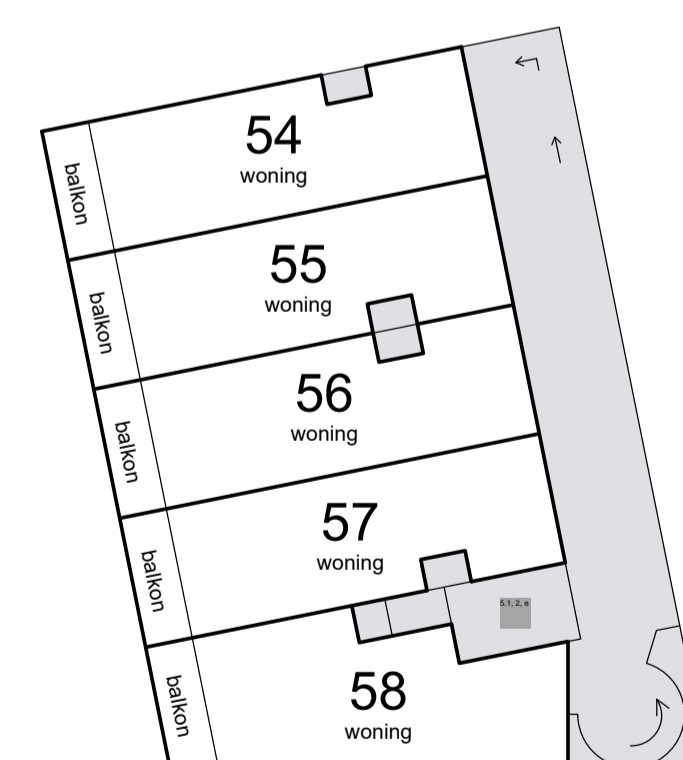
5e etage



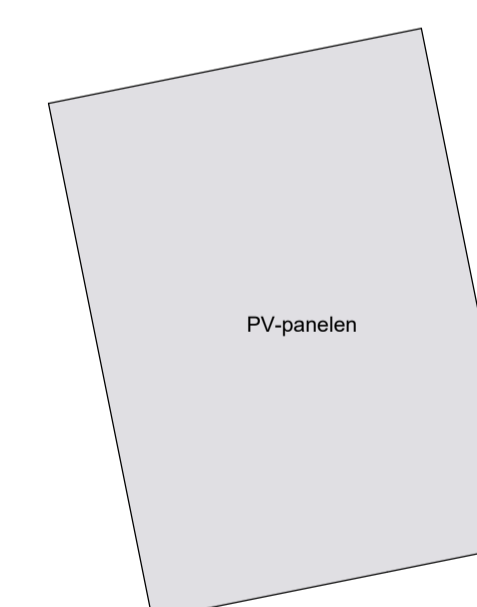
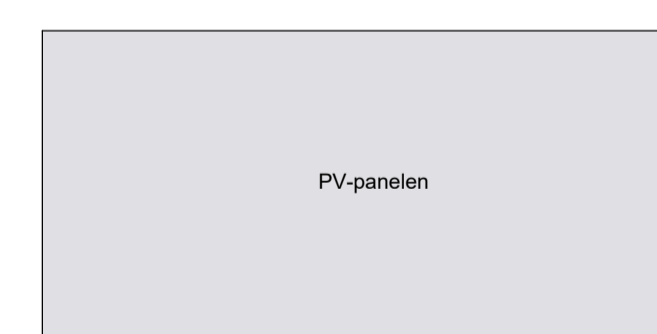
7e etage



4e etage



6e etage



7e etage opbouw
constructie

