

A02 2 FEB 2018

Handwritten signature

9453550



Behoort bij besluit d.d.:

6 APR. 2018

Gemeente Amsterdam

mm 10 20 30 40 50 60 70 80 90 100 110 120 130 140 150 160 170 180 190 200

inch 1 1 1/4 1 1/2 1 3/4 2

10 09 03 02 01 C7 B7 A7 C8 B8 A8 C9 B9

145 150 156 163

C1 B1 A1 C2 B2 A2 B5 A5 20 18 17 16 11

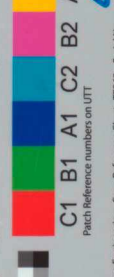
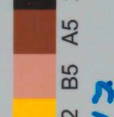
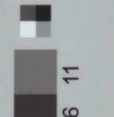
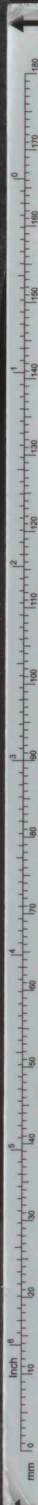
Patch Reference numbers on ITT

Image Engineering Scan Reference Chart TE283 Serial No. 47

the scale towards document



COA



10 09 03 02 01 C7 B7 A7 C8 B8 A8 C9 B9

Image Engineering Scan Reference Chart TE263 Serial No. 47 the scale towards document



47

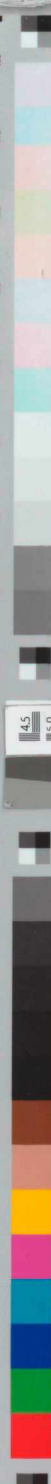
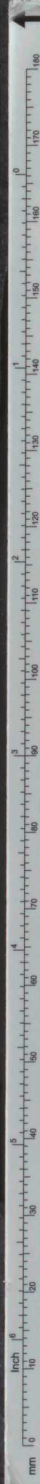


Image Engineering Scan Reference Chart TE263 Serial No. **47** the scale towards document



mm 0 10 20 30 40 50 60 70 80 90 100 110 120 130 140 150 160 170 180 190 200

inch 0 1 2 3 4 5 6 7 8 9 10

C1 B1 A1 C2 B2 A2 B5 A5 20 18 17 16 11

Patch Reference numbers on IUT

4.5 5.0 5.6 6.3

10 09 03 02 01 C7 B7 A7 C8 B8 A8 C9 B9

the scale towards document

Image Engineering Scan Reference Chart TE263 Serial No. **47**



mm 1 2 3 4 5 6 7 8 9 10 11 12 13 14 15 16 17 18 19 20 21 22 23 24 25 26 27 28 29 30

inch 1/8 1/4 3/8 1/2 5/8 3/4 7/8 1

100 110 120 130 140 150 160 170 180 190 200

10 09 03 02 01 C7 B7 A7 C8 B8 A8 C9 B9

4.5 5.0 5.5 6.0

C1 B1 A1 C2 B2 A2 B5 A5 20 18 17 16 11

Image Engineering Scan Reference Chart TE203 Serial No. **47**

the scale towards document



C1 B1 A1 C2 B2 A2 B5 A5 A20 18 17 16 11  
Patch Reference numbers on UTT

47

Image Engineering Scan Reference Chart TE263 Serial No.

10 09 03 02 01 C7 B7 A7 C8 B8 A8 C9 B9  
the scale towards document



mm 0 10 20 30 40 50 60 70 80 90 100 110 120 130 140 150 160 170 180 190 200

inch 0 1 2 3 4 5 6 7 8 9 10

C1 B1 A1 C2 B2 A2 B5 A5 20 18 17 16 11

Patch Reference numbers on IUT

4.5 5.0 5.5 6.0

10 09 03 02 01 C7 B7 A7 C8 B8 A8 C9 B9

the scale towards document

Image Engineering Scan Reference Chart TE263 Serial No. 47





mm 0 10 20 30 40 50 60 70 80 90 100 110 120 130 140 150 160 170 180 190 200

inch 0 1 2 3 4 5 6 7 8 9 10

C1 B1 A1 C2 B2 A2 B5 A5 20 18 17 16 11

C10 09 03 02 01 C7 B7 A7 C8 B8 A8 C9 B9

4.5 5.0 5.6 6.3

Image Engineering Scan Reference Chart TE263 Serial No. **47**

the scale towards document



mm 0 10 20 30 40 50 60 70 80 90 100

inch 0 1 2 3 4 5 6 7 8 9 10

C1 B1 A1 C2 B2 A2 B5 A5 20 18 17 16 11

Patch Reference numbers on UTT

4.5 5.0 5.6 6.3

10 09 03 02 01 C7 B7 A7 C8 B8 A8 C9 B9

the scale towards document

Image Engineering Scan Reference Chart TE263 Serial No. **47**



mm 0 10 20 30 40 50 60 70 80 90 100 110 120 130 140 150 160 170 180 190 200

inch 0 1 2 3 4 5 6

10 09 03 02 01 C7 B7 A7 C8 B8 A8 C9 B9

4.5 3.0 1.5 0.3

C1 B1 A1 C2 B2 A2 B5 A5 20 18 17 16 11

Patch Reference numbers on ITT

Image Engineering Scan Reference Chart TE263 Serial No. 47

the scale towards document



mm 0 10 20 30 40 50 60 70 80 90 100 110 120 130 140 150 160 170 180 190 200

inch 0 1 2 3 4 5 6 7 8 9 10

1 100 1000 10000 100000 1000000

10 09 03 02 01 C7 B7 A7 C8 B8 A8 C9 B9

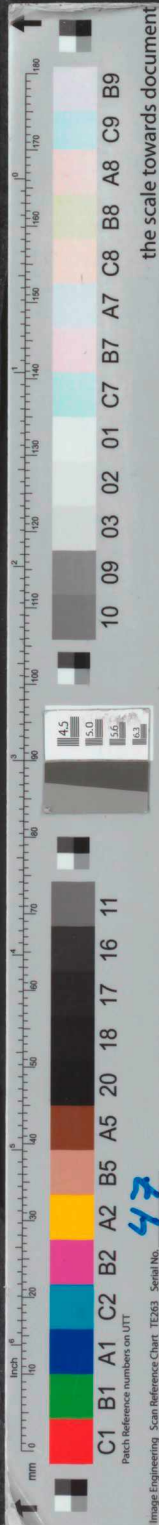
4.5 5.0 5.6 6.3

C1 B1 A1 C2 B2 A2 B5 A5 20 18 17 16 11

Patch Reference numbers on ITT

Image Engineering Scan Reference Chart TE263 Serial No. **47**

the scale towards document



the scale towards document

47

Image Engineering Scan Reference Chart TE263 Serial No. 47



mm 0 10 20 30 40 50 60 70 80 90 100  
inch 0 1 2 3 4 5 6 7 8 9 10

10 09 03 02 01 C7 B7 A7 C8 B8 A8 C9 B9

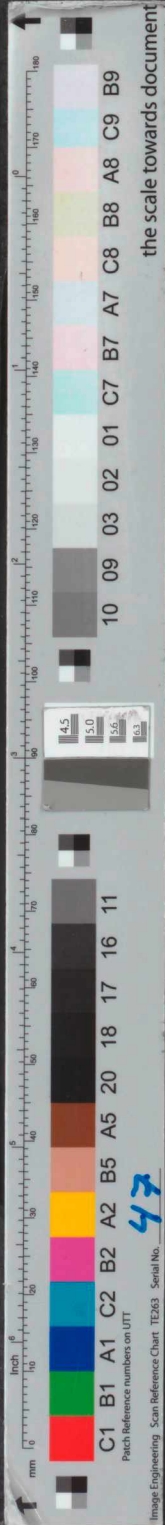
C1 B1 A1 C2 B2 A2 B5 A5 20 18 17 16 11

Patch Reference numbers on JTT

4.5 5.0 5.6 6.3

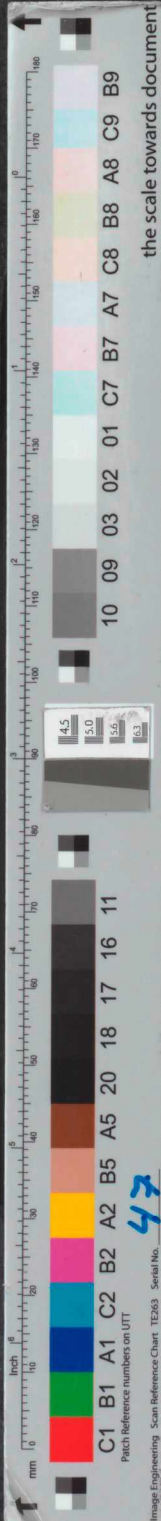
Image Engineering Scan Reference Chart TE263 Serial No. 47

the scale towards document



the scale towards document

Image Engineering Scan Reference Chart TE283 Serial No. 47





mm 0 10 20 30 40 50 60 70 80 90 100 110 120 130 140 150 160 170 180

cm 0 10 20 30 40 50 60 70 80 90 100 110 120 130 140 150 160 170 180

ft 0 1 2 3 4 5 6 7 8 9 10

in 0 1 2 3 4 5 6 7 8 9 10 11 12

4.5 5.0 5.6 6.3

C1 B1 A1 C2 B2 A2 B5 A5 20 18 17 16 11

10 09 03 02 01 C7 B7 A7 C8 B8 A8 C9 B9

Patch Reference numbers on IUT

Image Engineering Scan Reference Chart TE263 Serial No. **47**

the scale towards document



