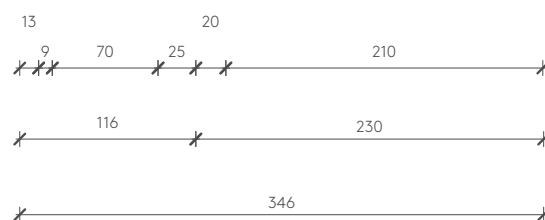
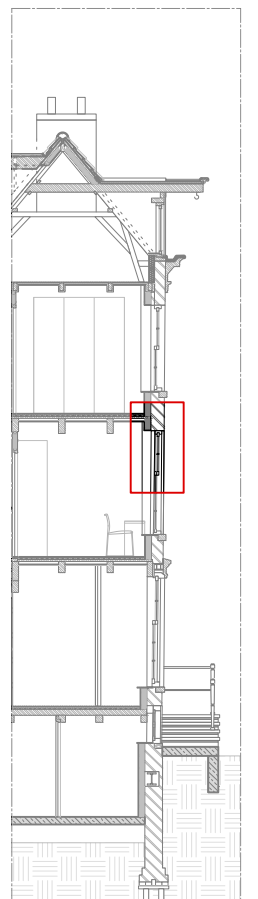
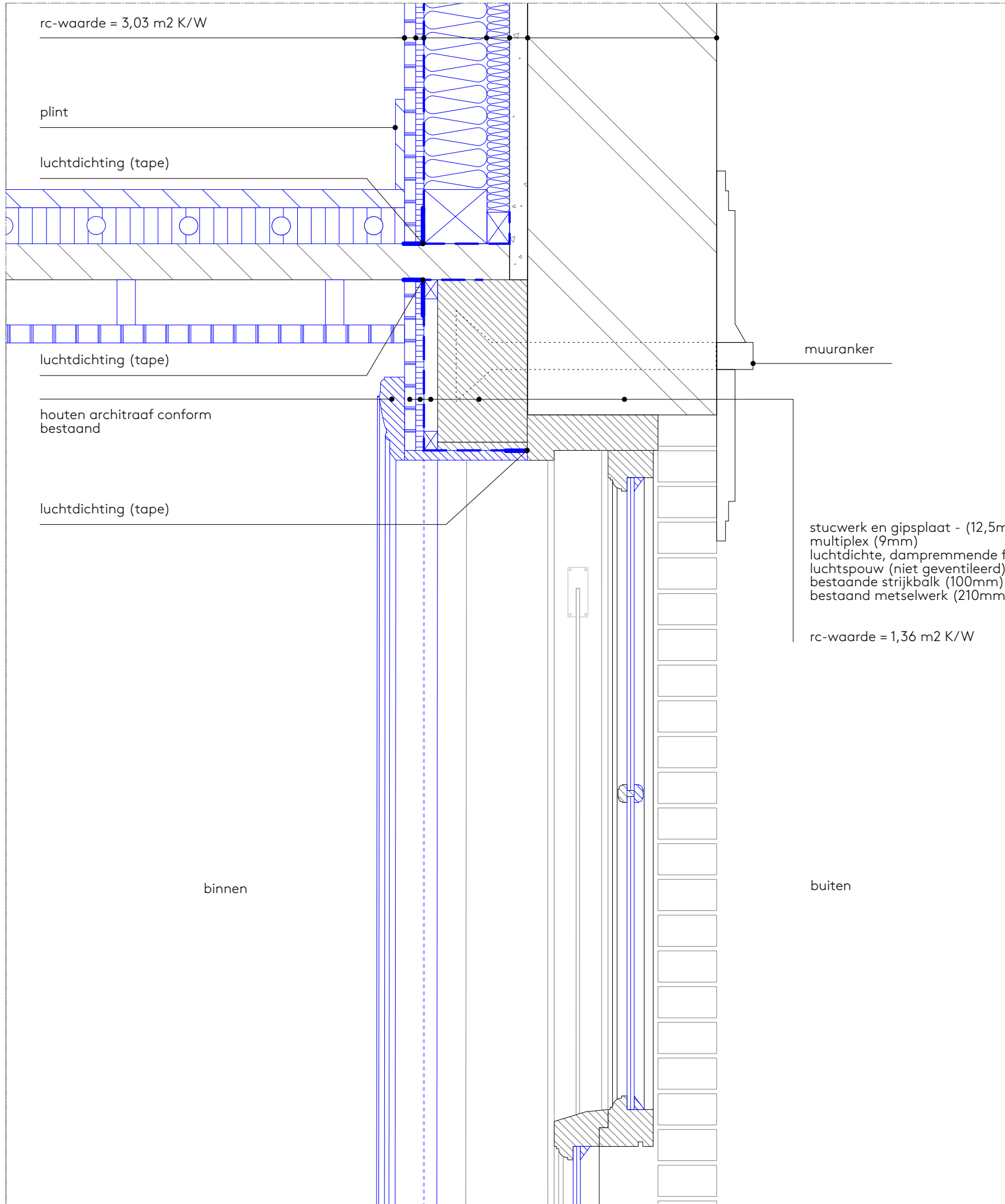


Detail 01

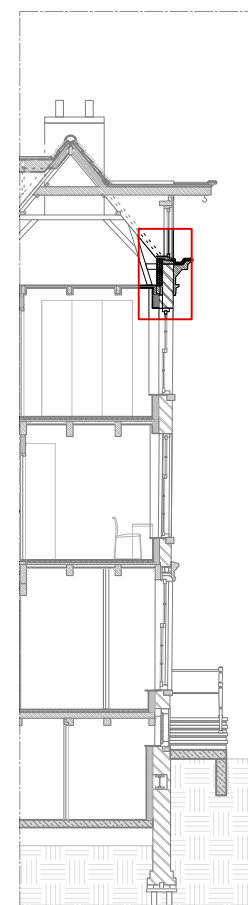
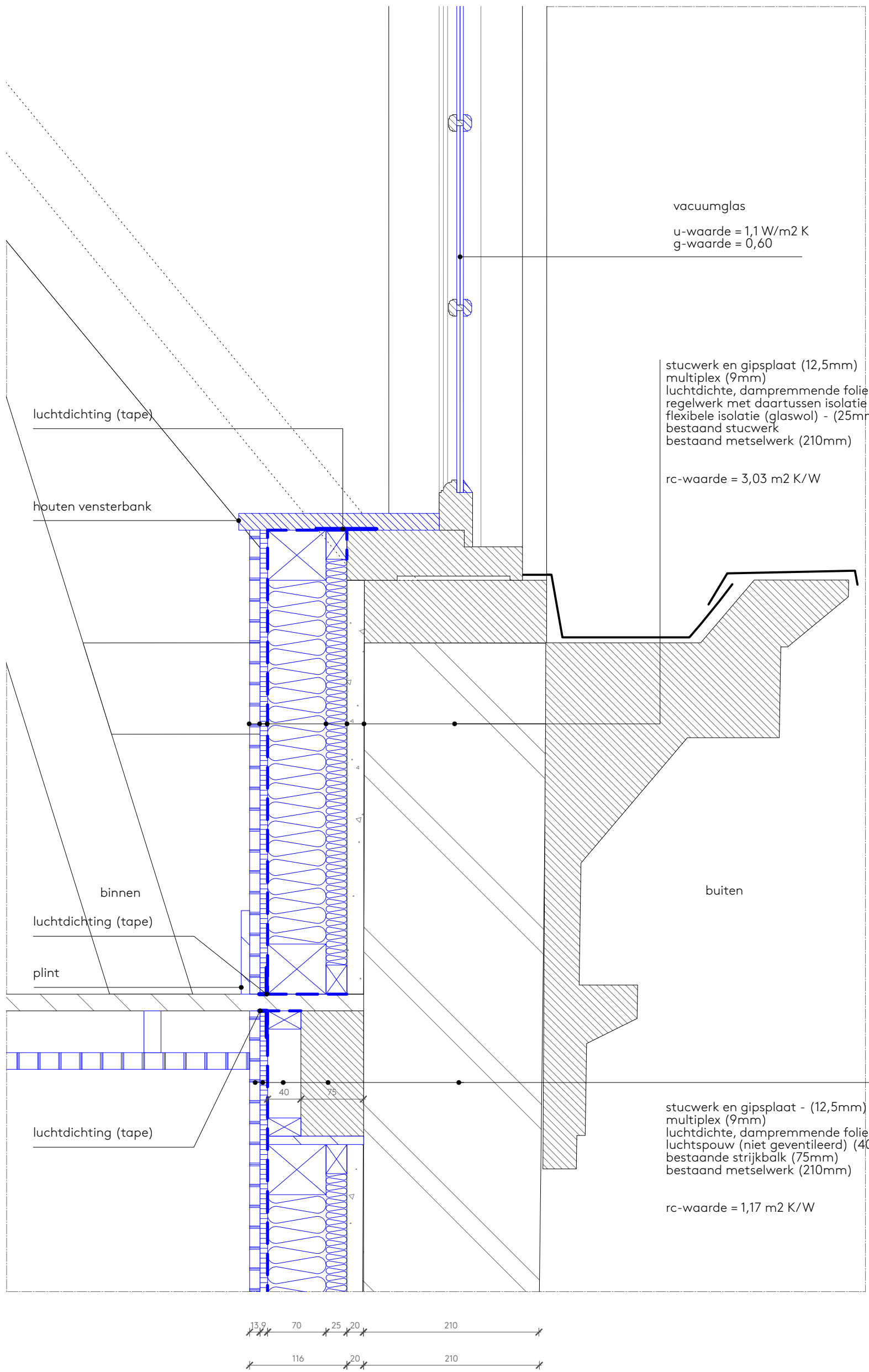


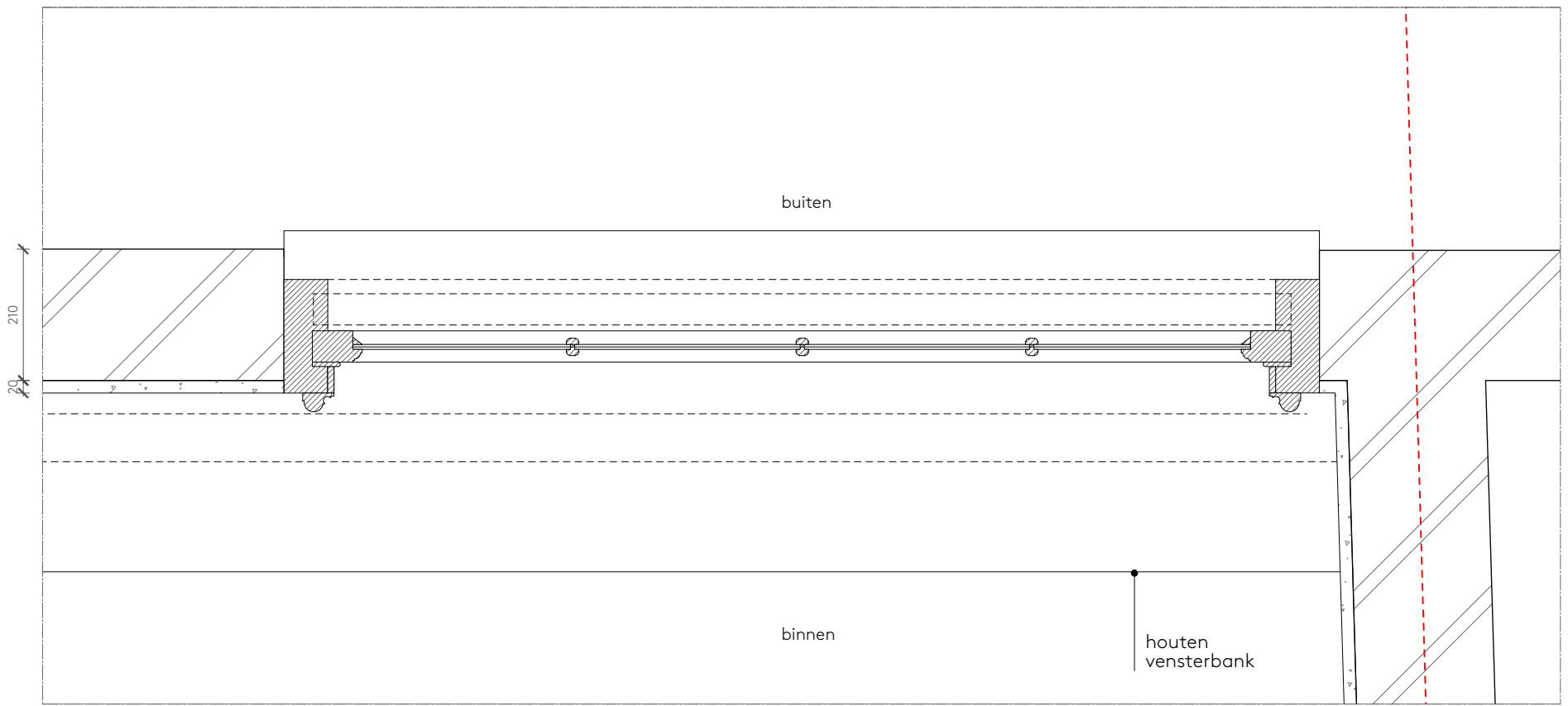
stucwerk en gipsplaat (12,5mm)  
 multiplex (9mm)  
 luchtdichte, dampremmende folie (0,2mm)  
 regelwerk met daartussen isolatie (glaswol) - (70mm)  
 flexibele isolatie (glaswol) - (25mm)  
 bestaand stucwerk  
 bestaand metselwerk (210mm)

346  
 116 230  
 13,9 70 25 20 210

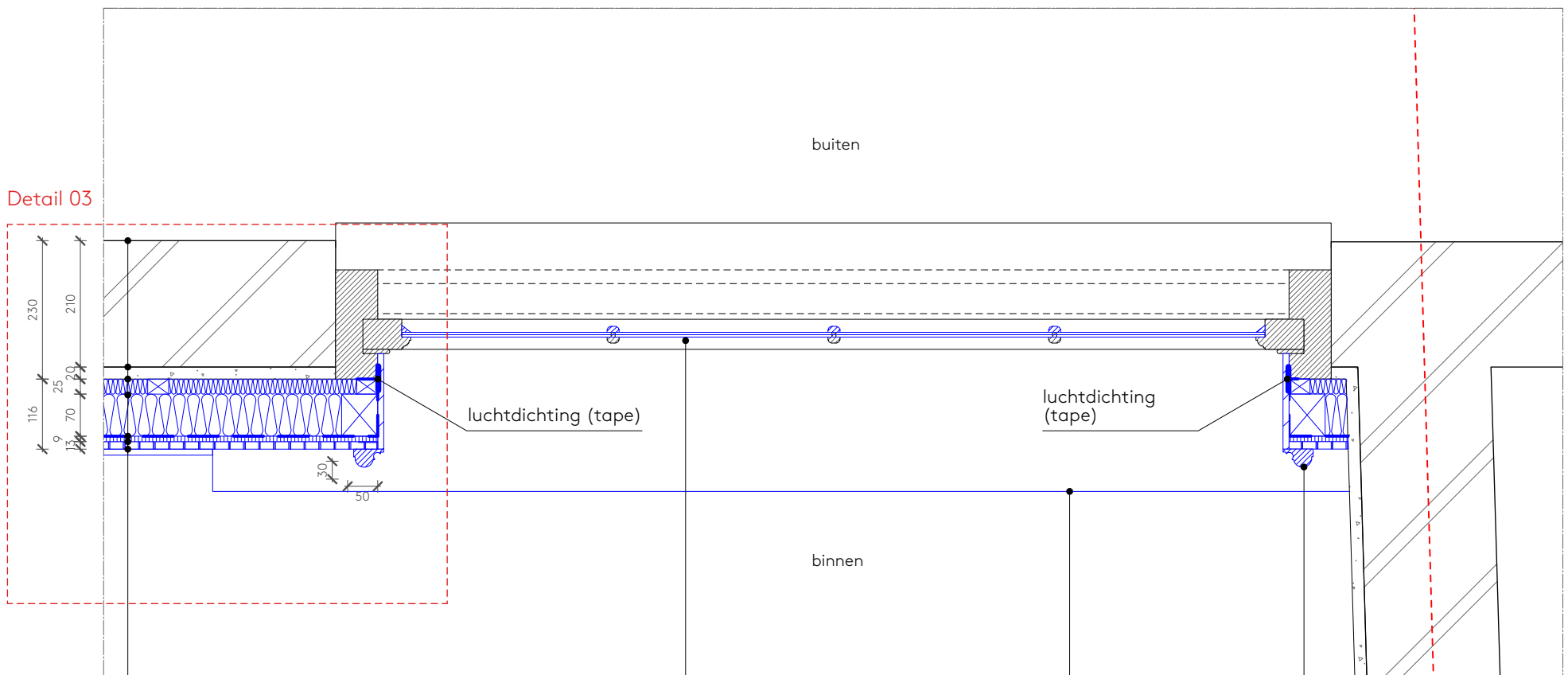


Detail 02





Bestaand



Nieuw

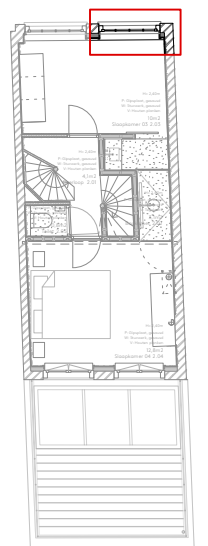
stucwerk en gipsplaat - (12,5mm)  
 multiplex (9mm)  
 luchtdichte, dampremmend folie (0,2mm)  
 regelwerk met daartussen isolatie (glaswol) - (70mm)  
 flexibele isolatie (glaswol) - (25mm)  
 bestaand stucwerk  
 bestaand metselwerk (210mm)

Rc-waarde = 3,03 m<sup>2</sup> K/W

vacuumglas  
 u-waarde = 1,1 W/m<sup>2</sup> K  
 g-waarde = 0,60

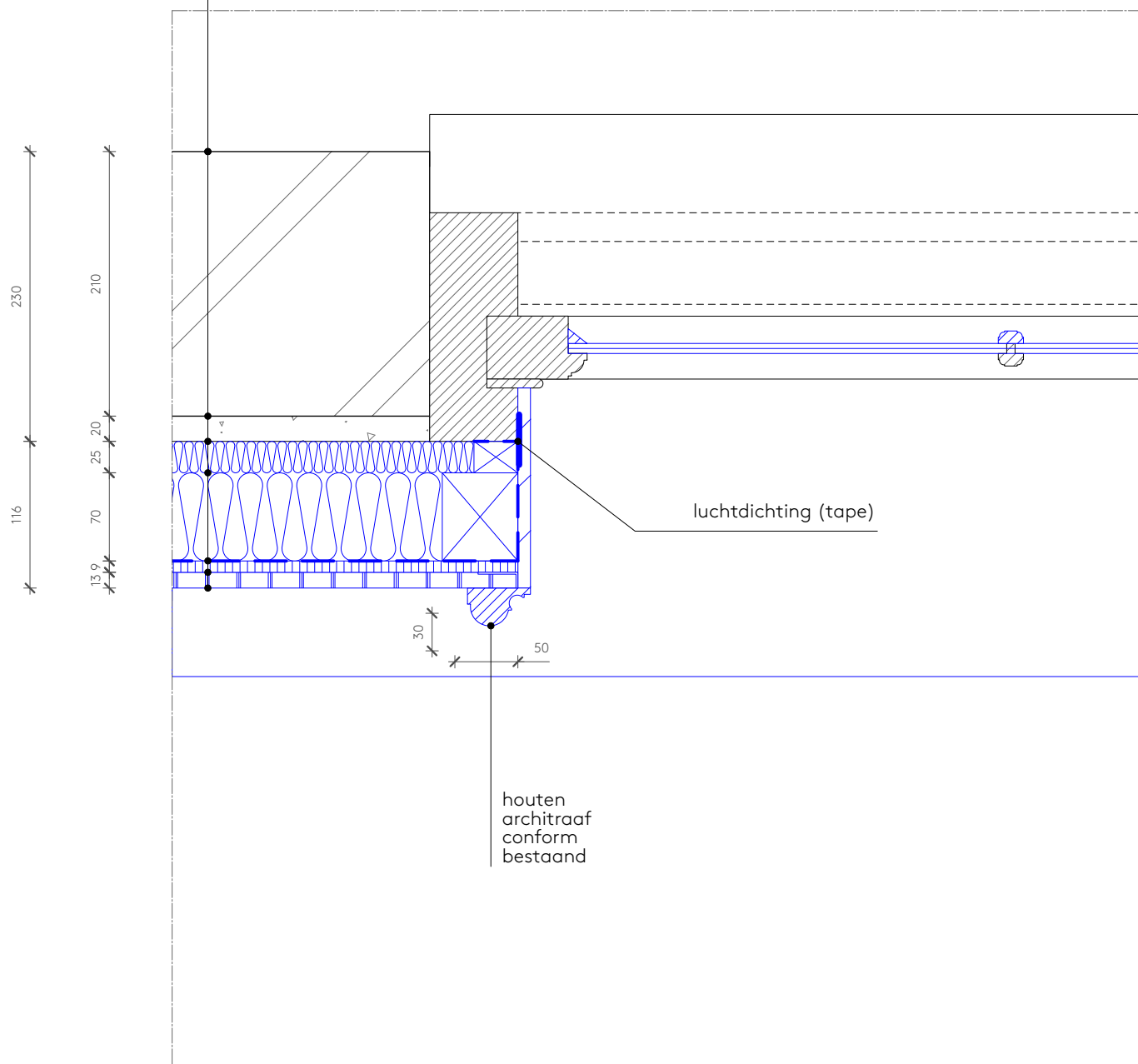
houten  
 vensterbank

houten  
 architraaf  
 conform  
 bestaand



stucwerk en gipsplaat - (12,5mm)  
 multiplex (9mm)  
 luchtdichte, dampremmend folie (0,2mm)  
 regelwerk met daartussen isolatie (glaswol) - (70mm)  
 flexibele isolatie (glaswol) - (25mm)  
 bestaand stucwerk  
 bestaand metselwerk (210mm)

Rc-waarde = 3,03 m<sup>2</sup> K/W



Detail 03

