

OZ

van Eeghenstraat 104

Amsterdam
17-508rw
Technisch Ontwerp

bladnummer:

31-01

versie:

D

datum:

08-02-2019

onderwerp:

Overzicht gevelkozijnen

schaal:

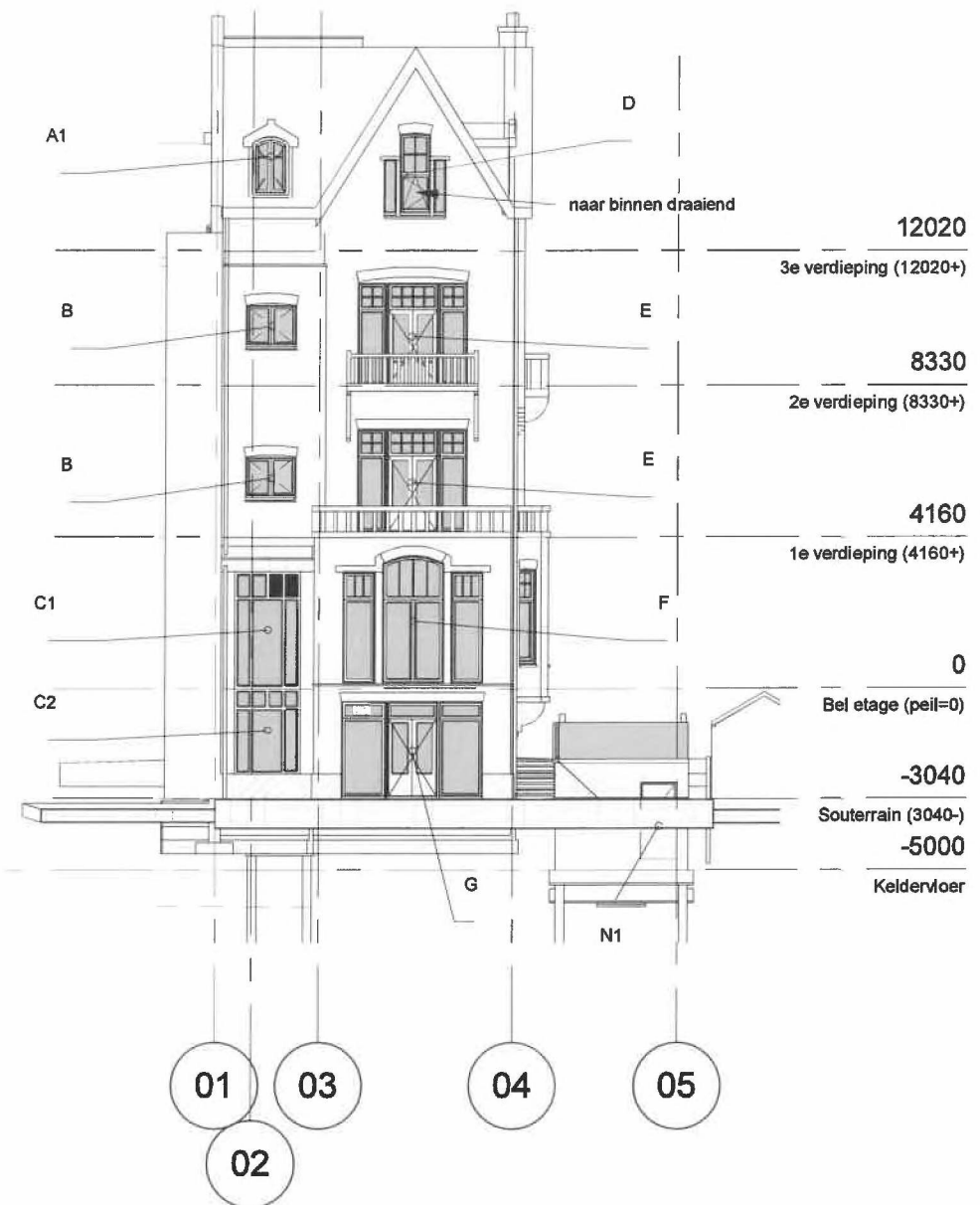
formaat:

A3

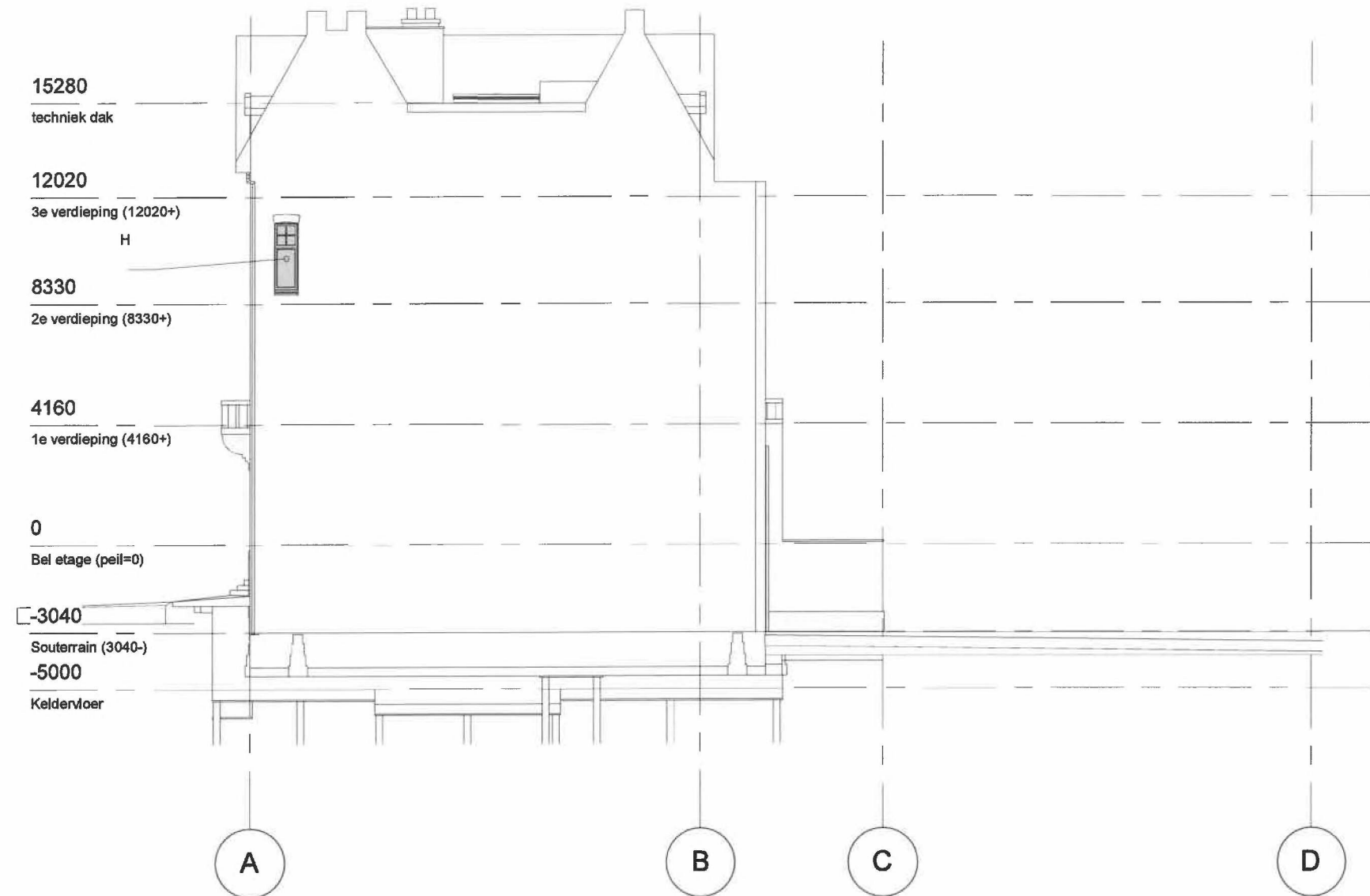
OZ

Postbus
1030 BH Amsterdam
+31 20 31 41
info@OZarchitect.
www.OZarchitect.n

Kozijnblad



Noordgevel

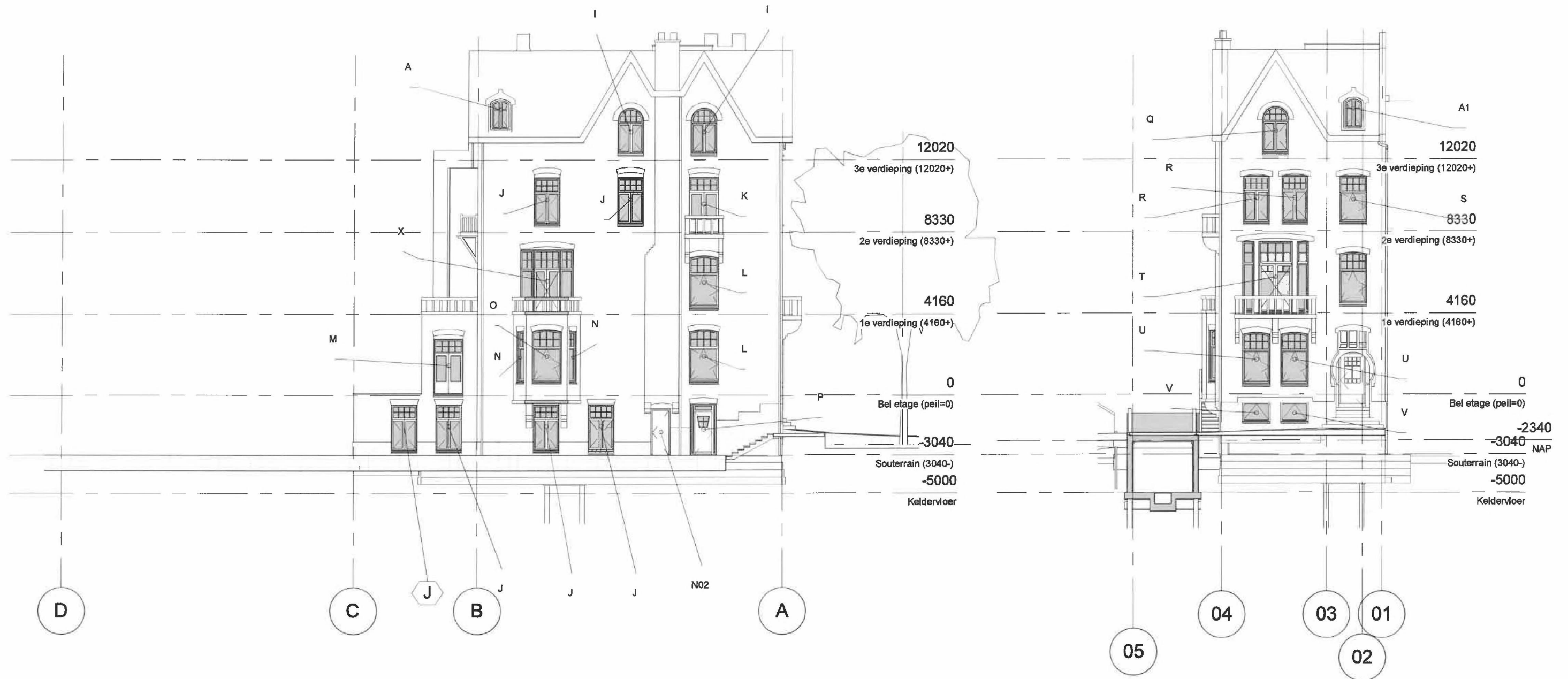


Oostgevel

voor principe details zie tek.09-01 blad 01, 02, 03, 04 en 05

maten in het werk te controleren
afmeting op tekening is indicatie

Kozijnblad



Westgevel

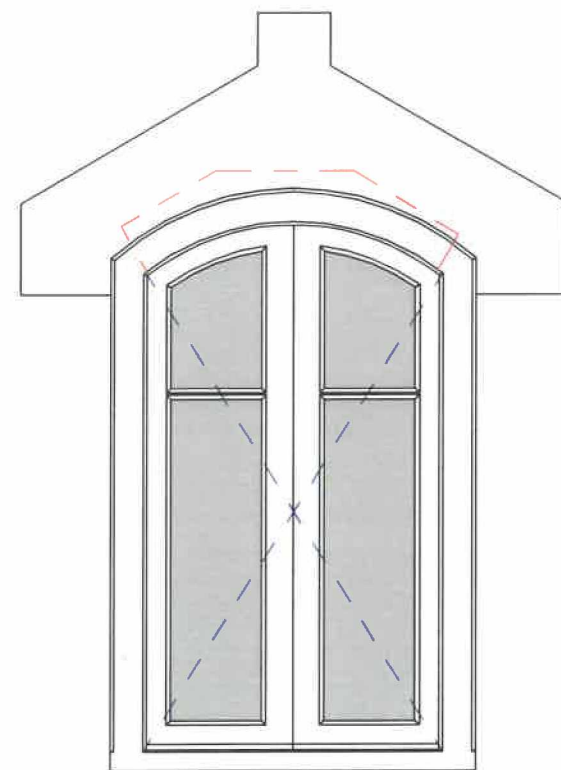
Zuidgevel

voor principe details zie tek.09-01 blad 01, 02, 03, 04 en 05

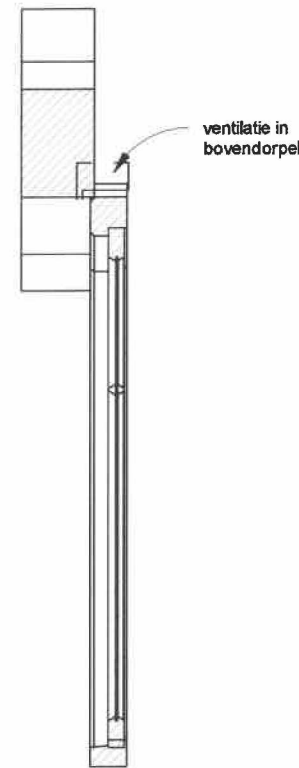
maten in het werk te controleren
afmeting op tekening is indicatie

Kozijnblad

type A

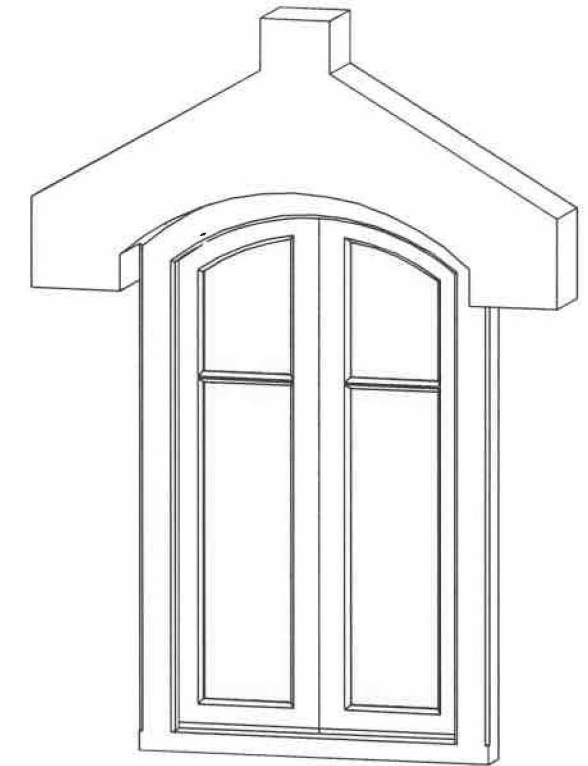
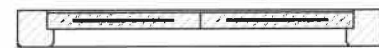


1591



ventilatie in
bovendorpel

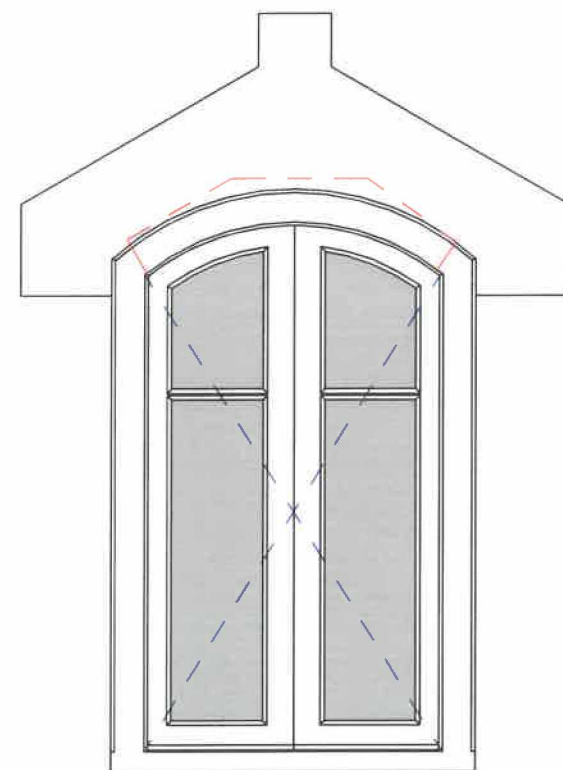
1000



maten in het werk te controleren
afmeting op tekening is indicatie

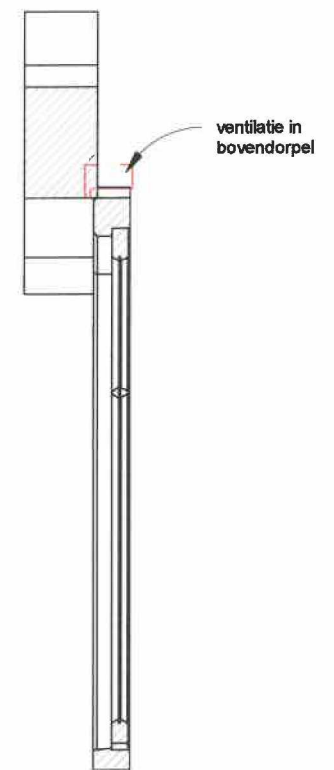
Kozijnblad

type A1

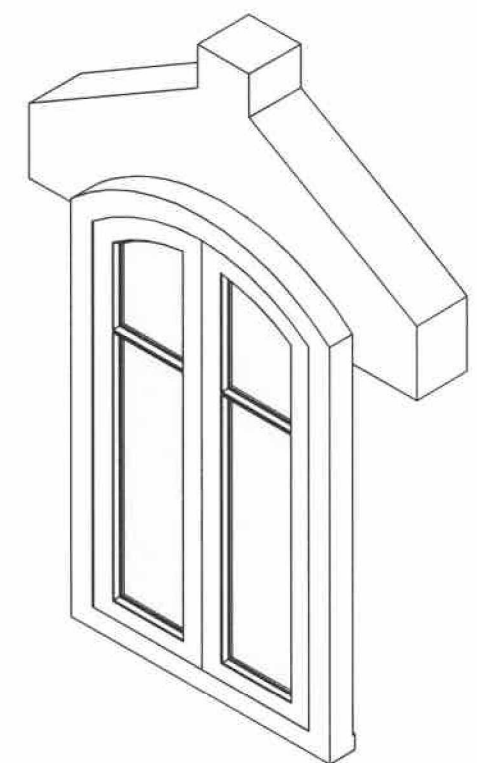


1591

1000



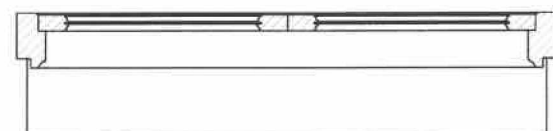
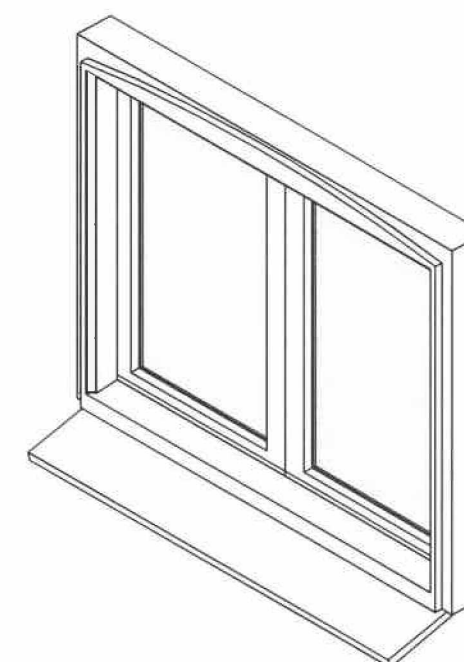
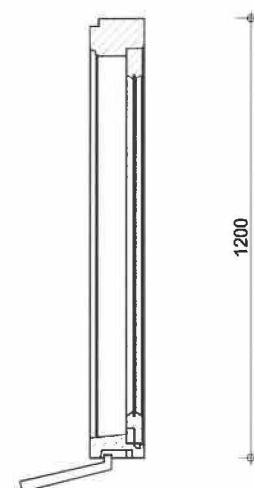
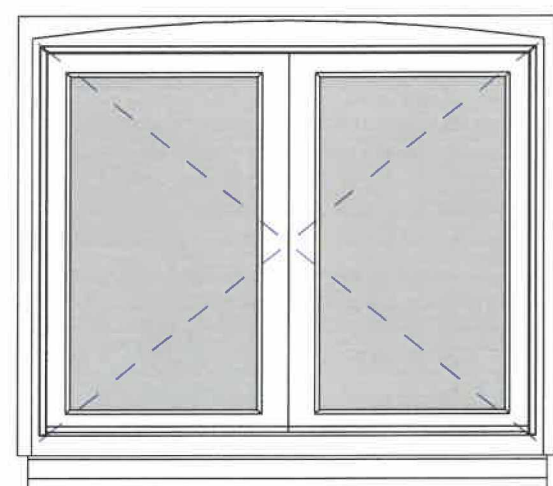
ventilatie in
bovendorpel



maten in het werk te controleren
afmeting op tekening is indicatie

Kozijnblad

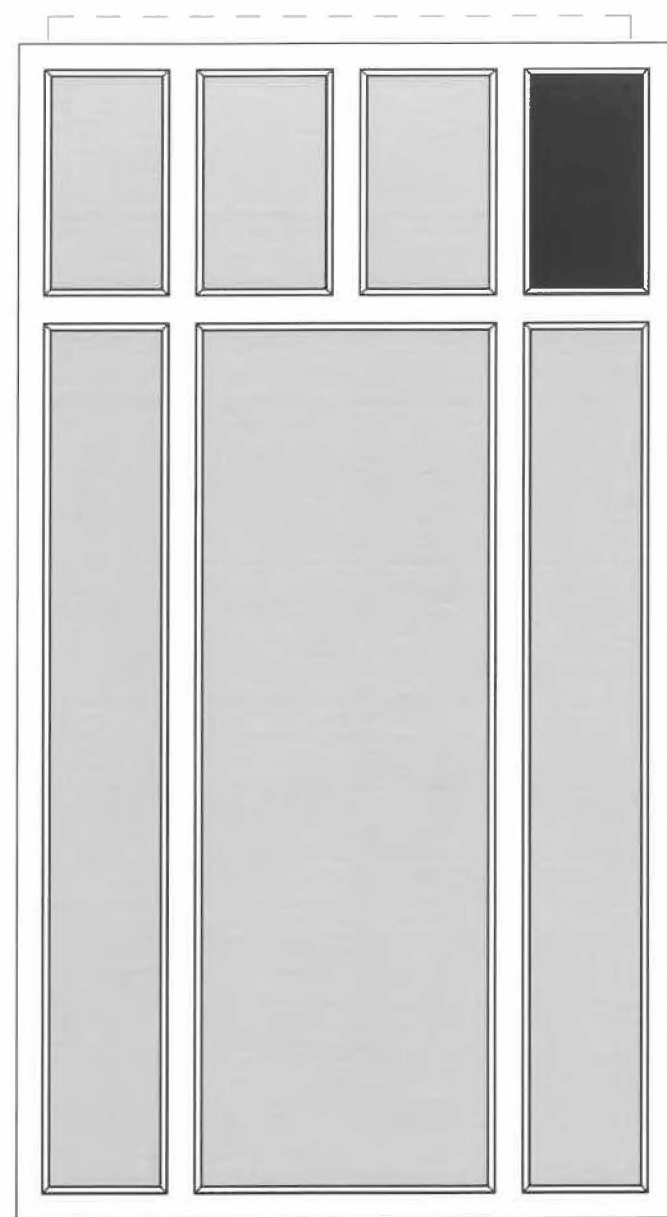
type B



maten in het werk te controleren
afmeting op tekening is indicatie

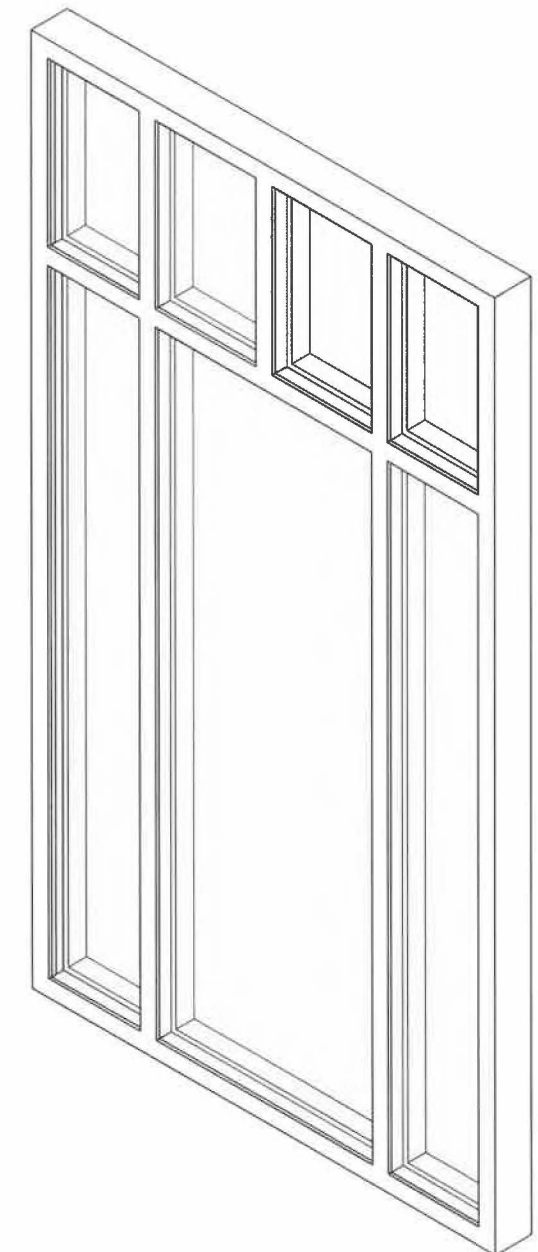
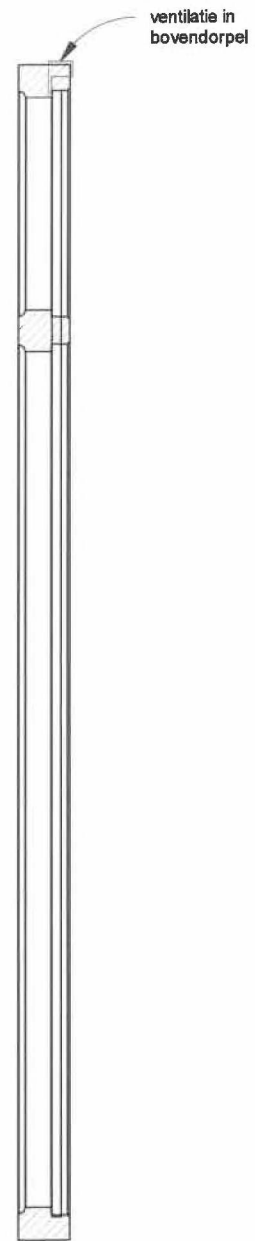
Kozijnblad

type C1



3210

1800

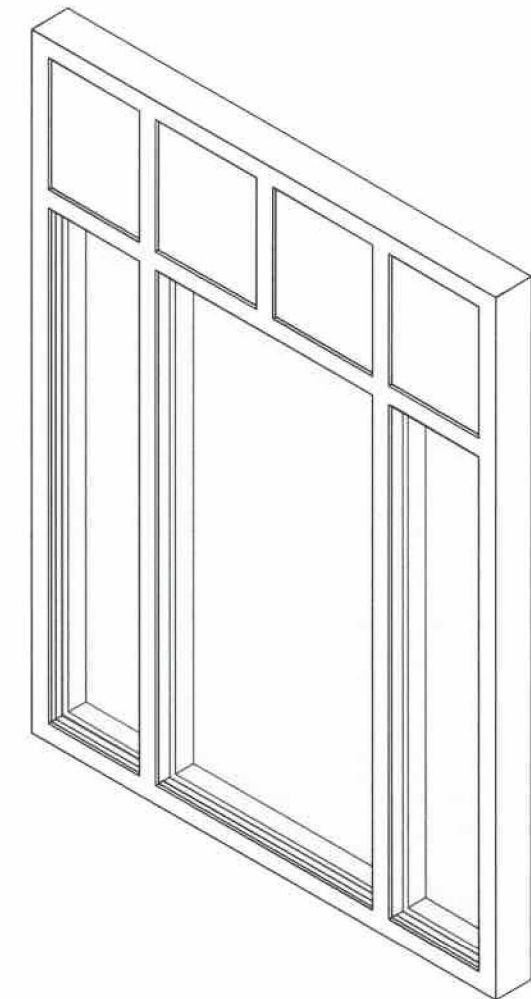
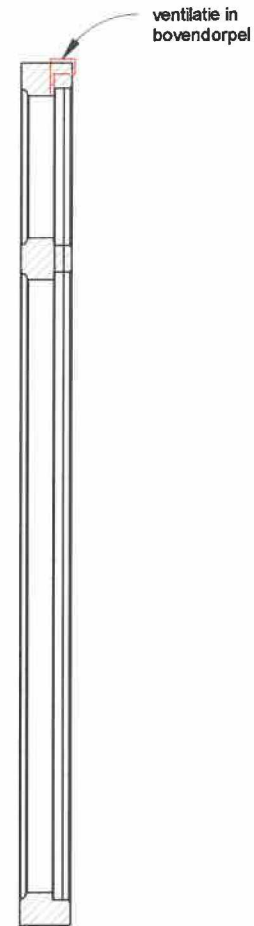
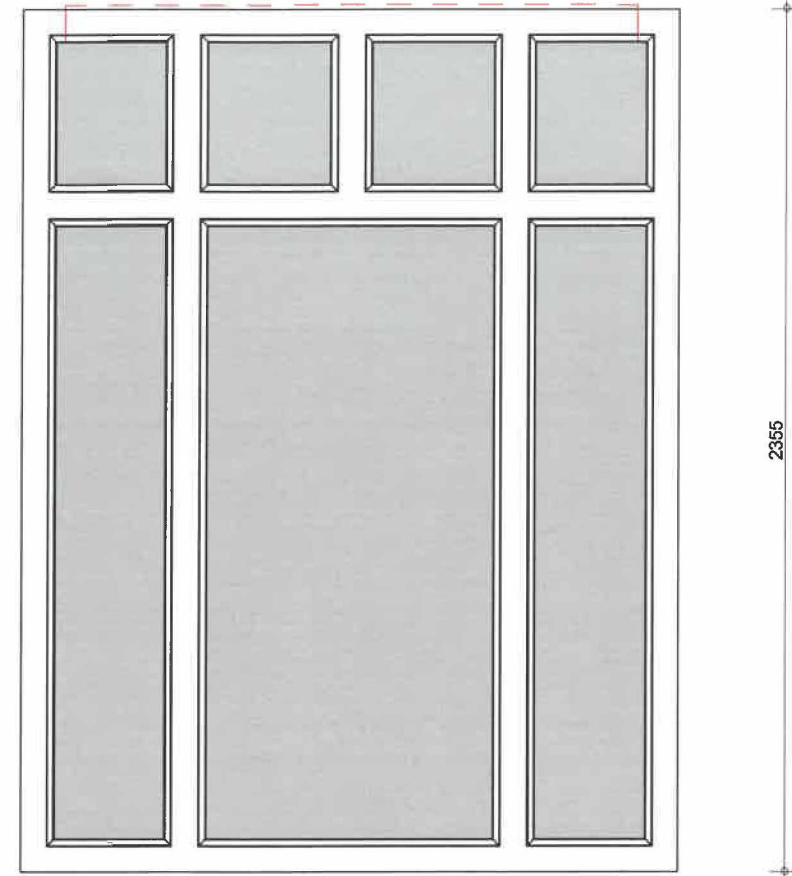


voor principe details zie tek.09-01 blad 01, 02, 03, 04 en 05

maten in het werk te controleren
afmeting op tekening is indicatie

Kozijnblad

type C2

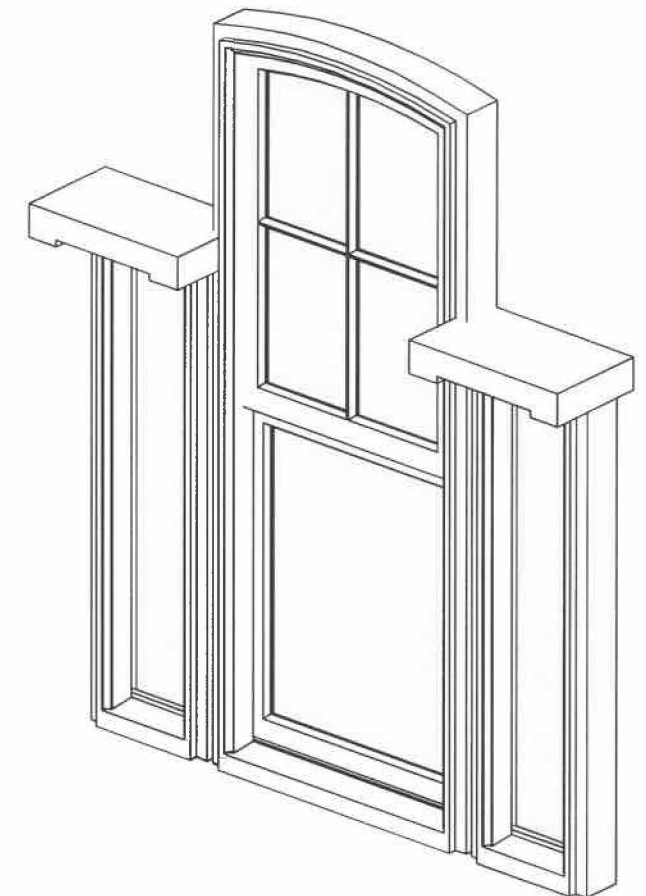
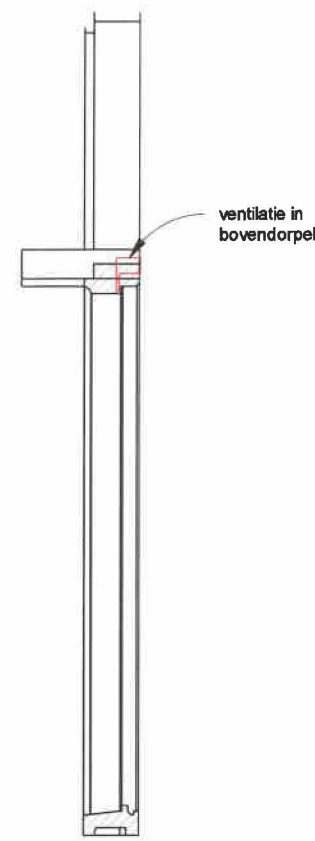
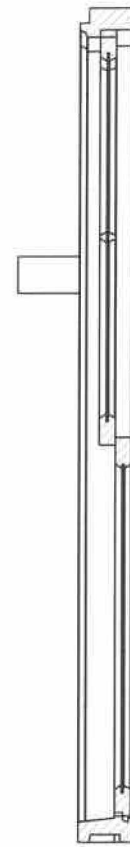
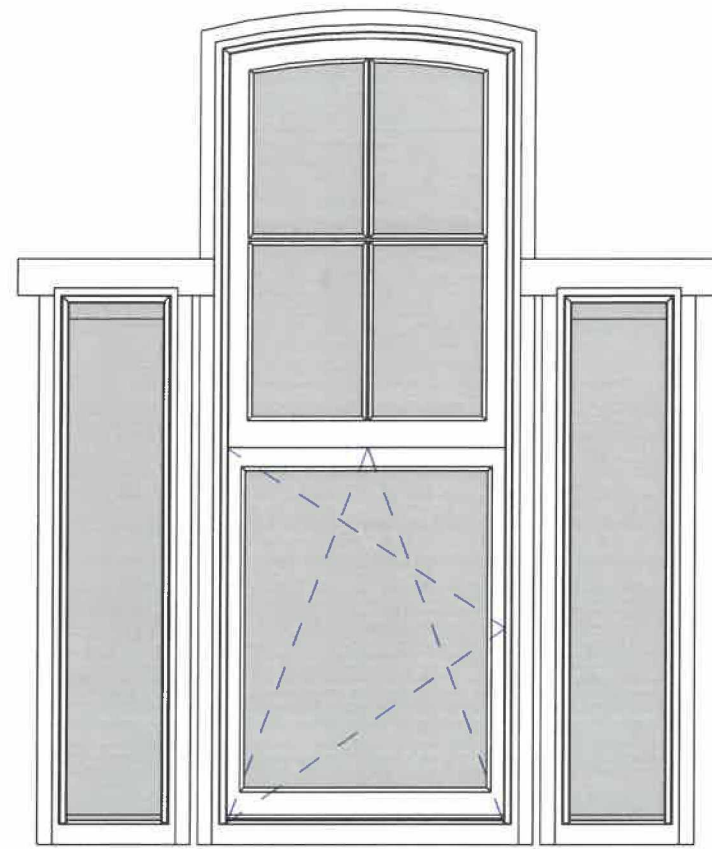


voor principe details zie tek.09-01 blad 01, 02, 03, 04 en 05

maten in het werk te controleren
afmeting op tekening is indicatie

Kozijnblad

type D

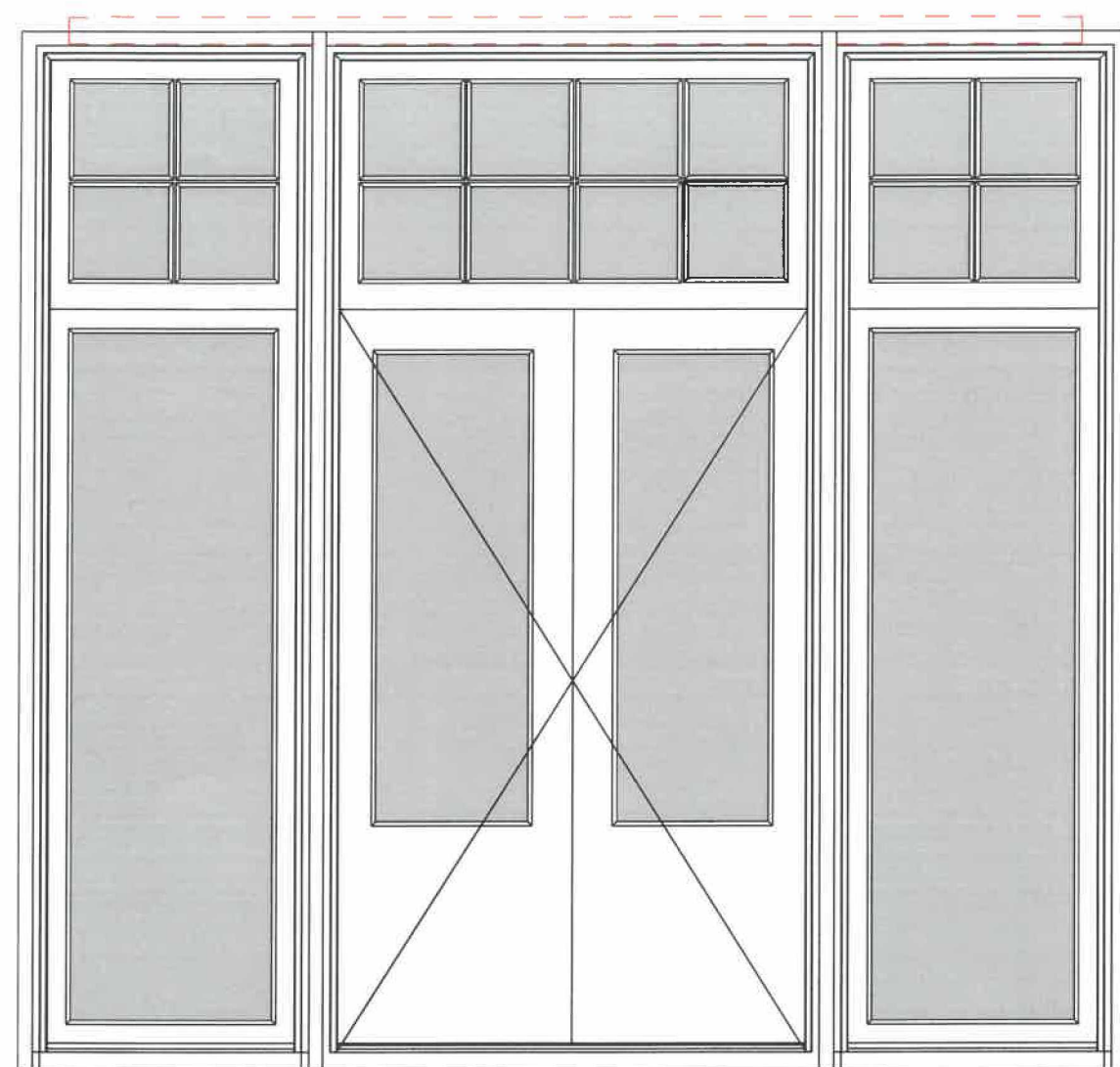


voor principe details zie tek.09-01 blad 01, 02, 03, 04 en 05

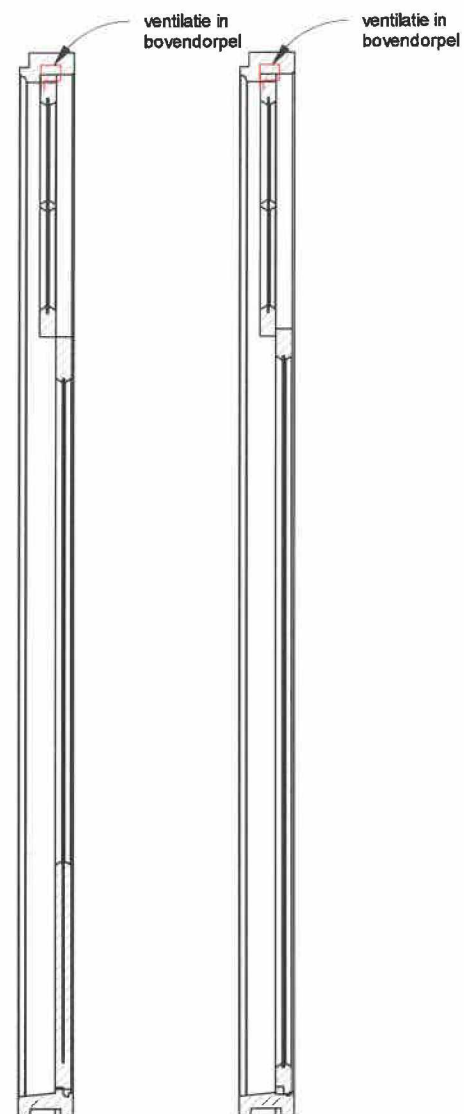
maten in het werk te controleren
afmeting op tekening is indicatie

Kozijnblad

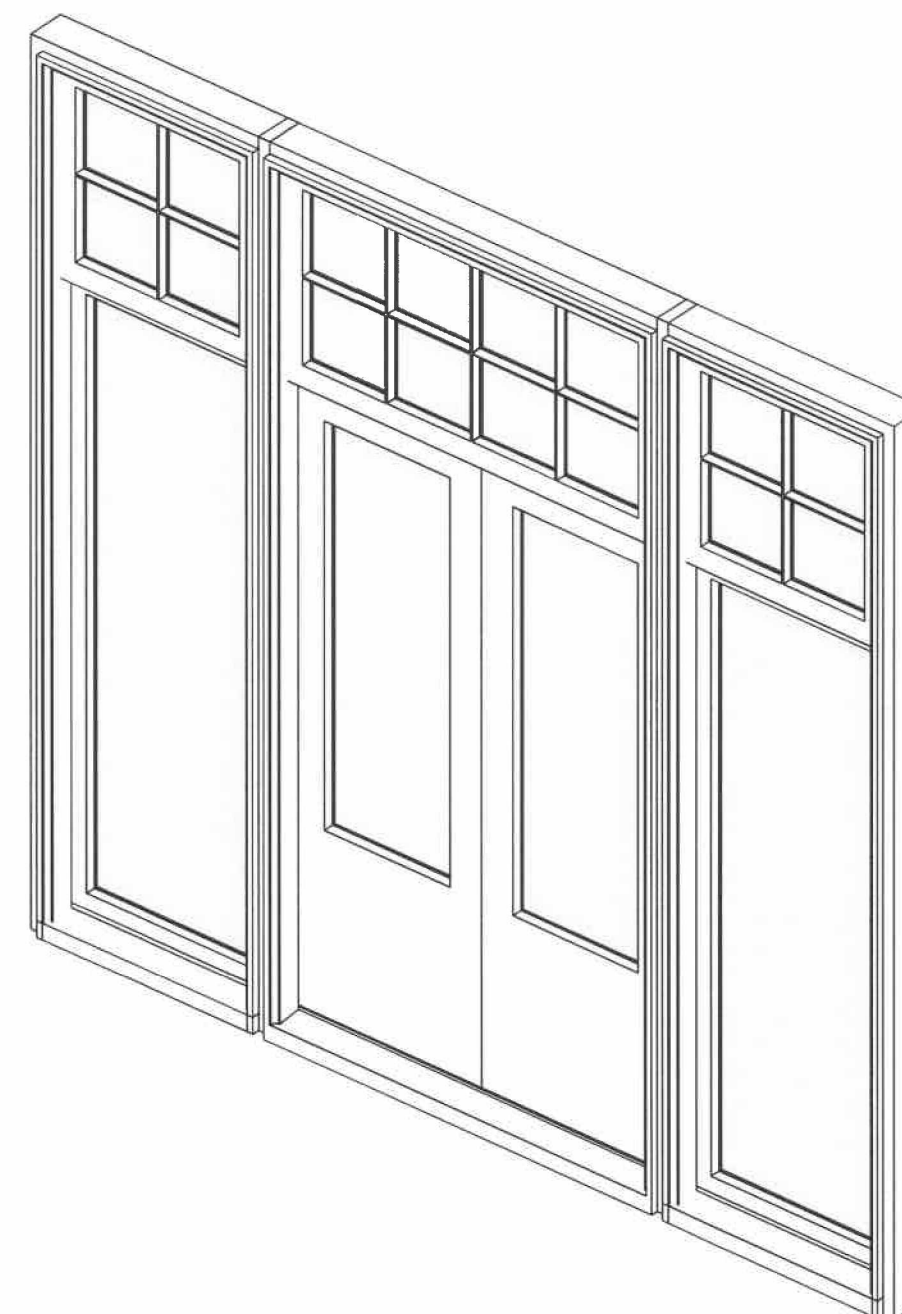
type E



2865

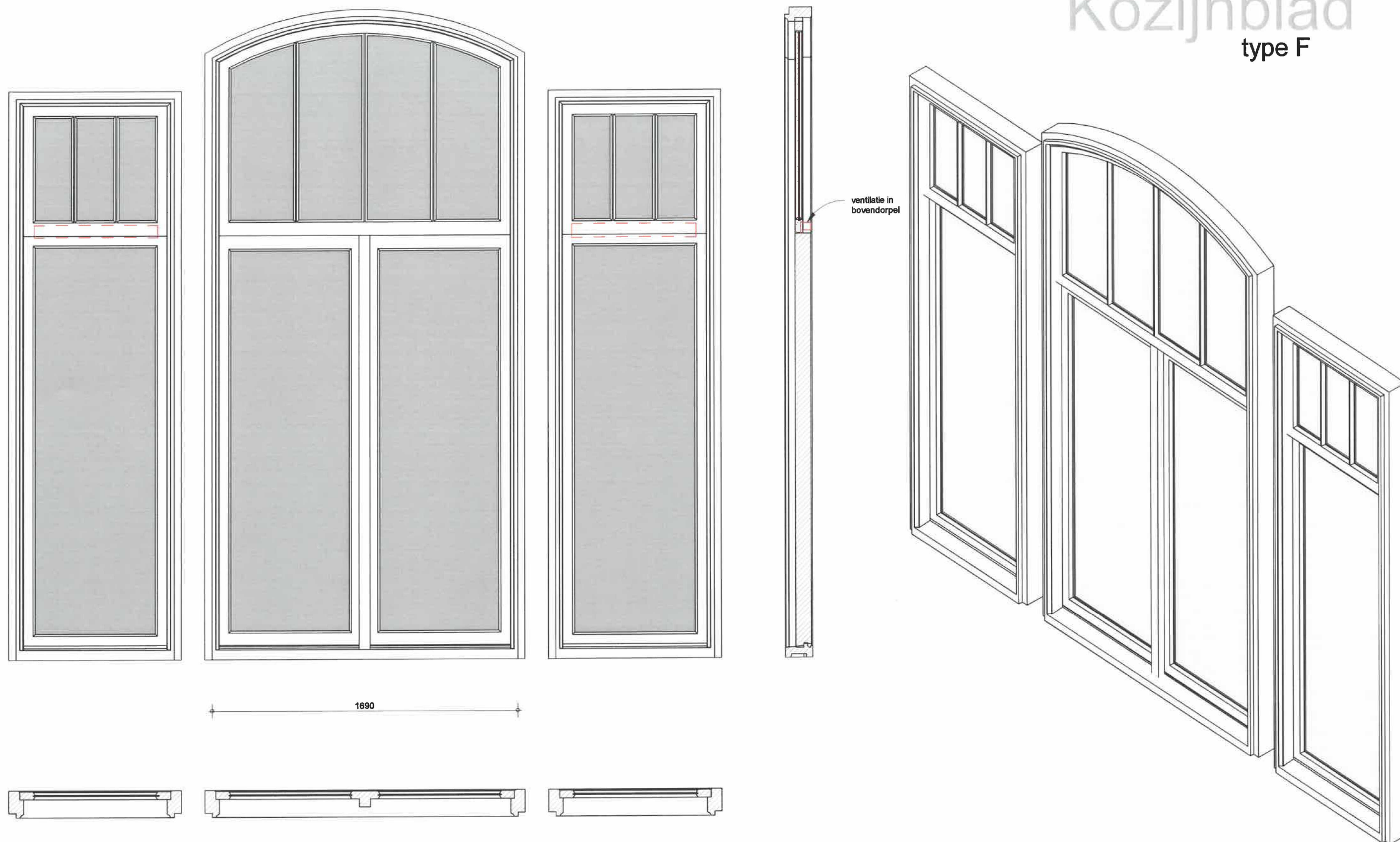


3020



maten in het werk te controleren
afmeting op tekening is indicatie

Kozijnblad type F

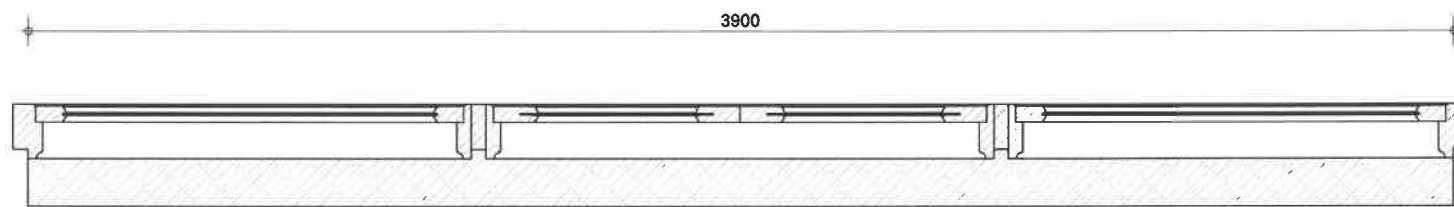
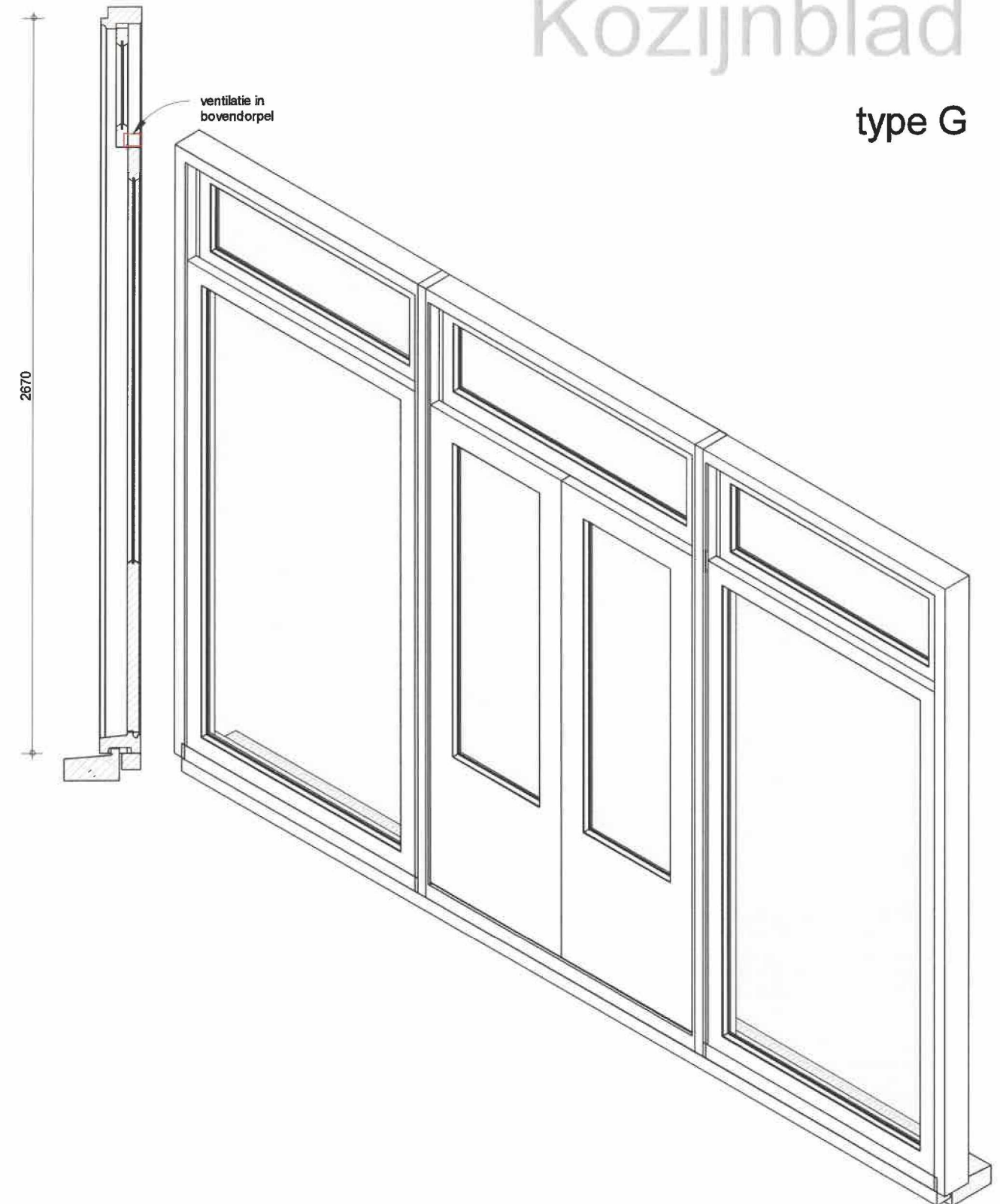
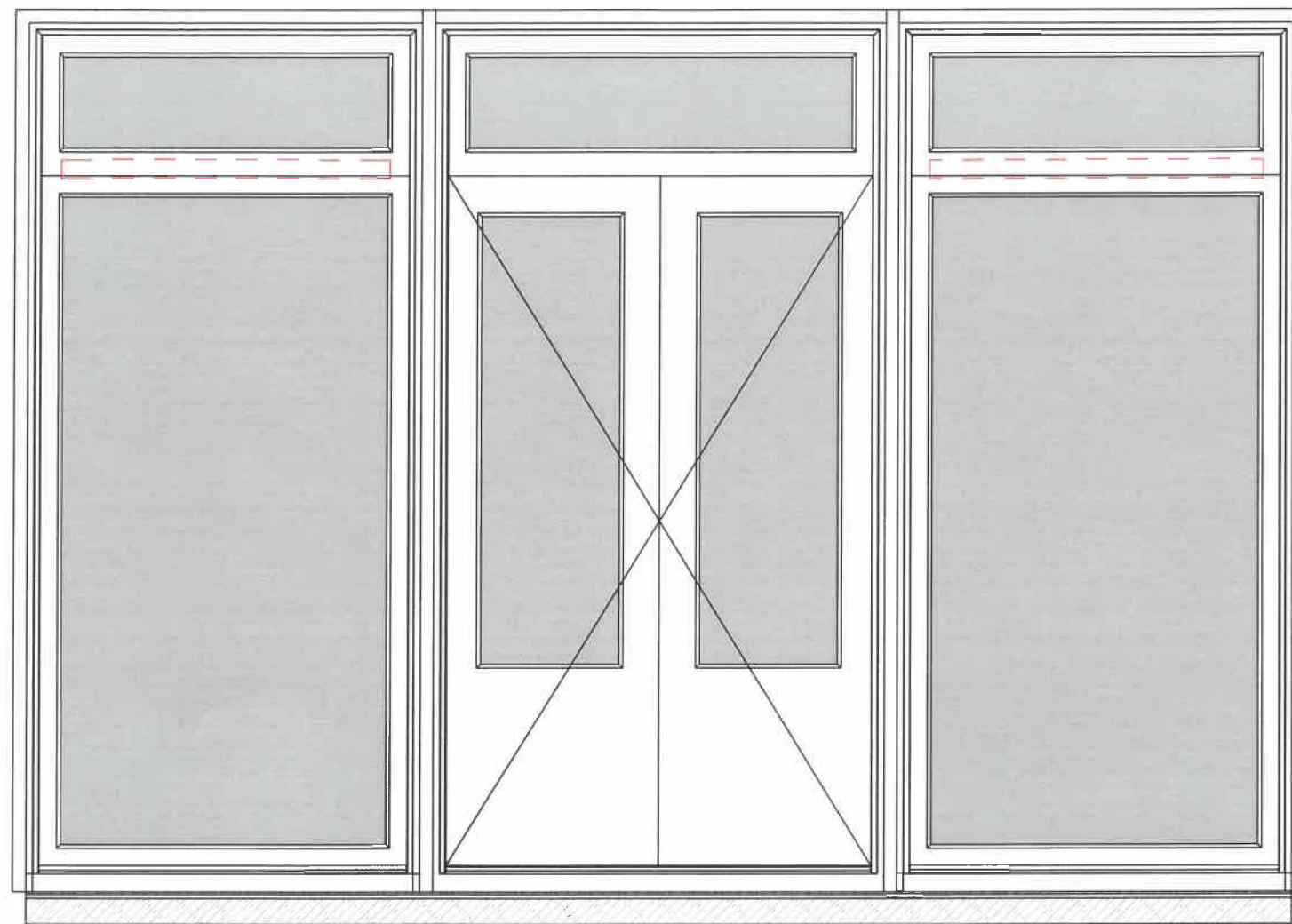


voor principe details zie tek.09-01 blad 01, 02, 03, 04 en 05

maten in het werk te controleren
afmeting op tekening is indicatie

Kozijnblad

type G

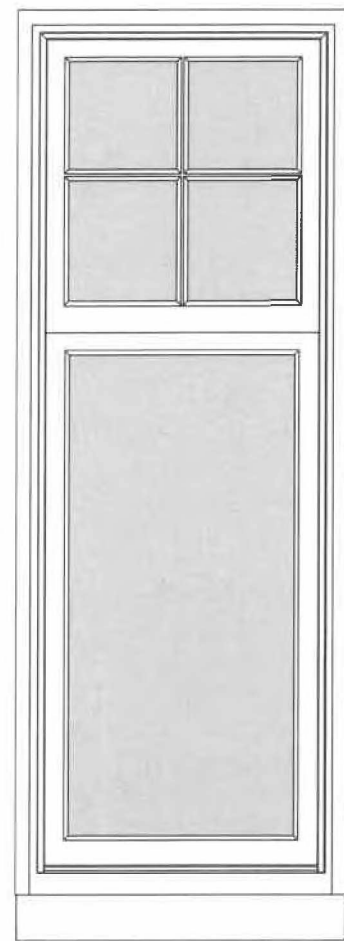


voor principe details zie tek.09-01 blad 01, 02, 03, 04 en 05

maten in het werk te controleren
afmeting op tekening is indicatie

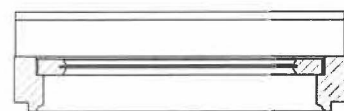
Kozijnblad

type H

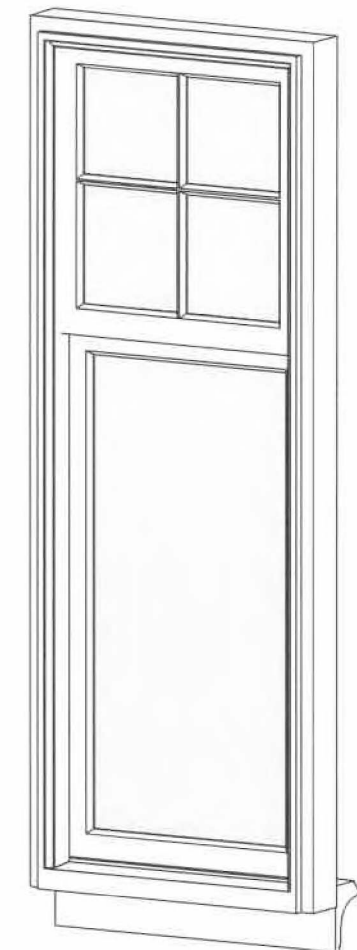


2375

830



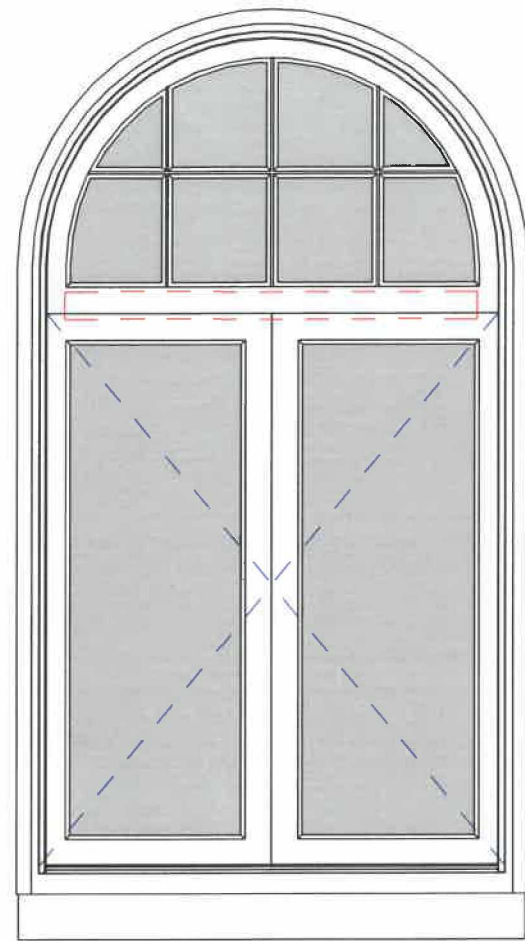
glas aan binnenzijde voorzien van folie
daarna voorzetwand plaatsen



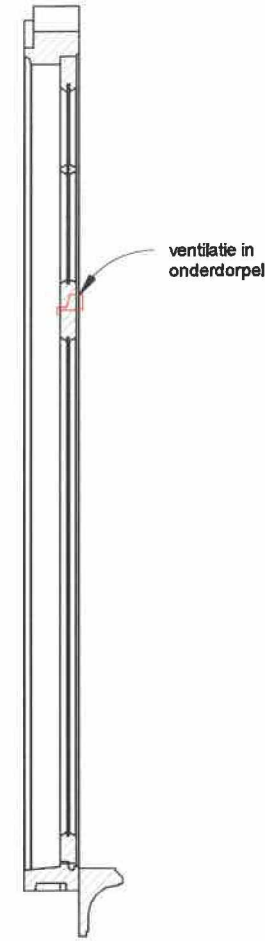
maten in het werk te controleren
afmeting op tekening is indicatie

Kozijnblad

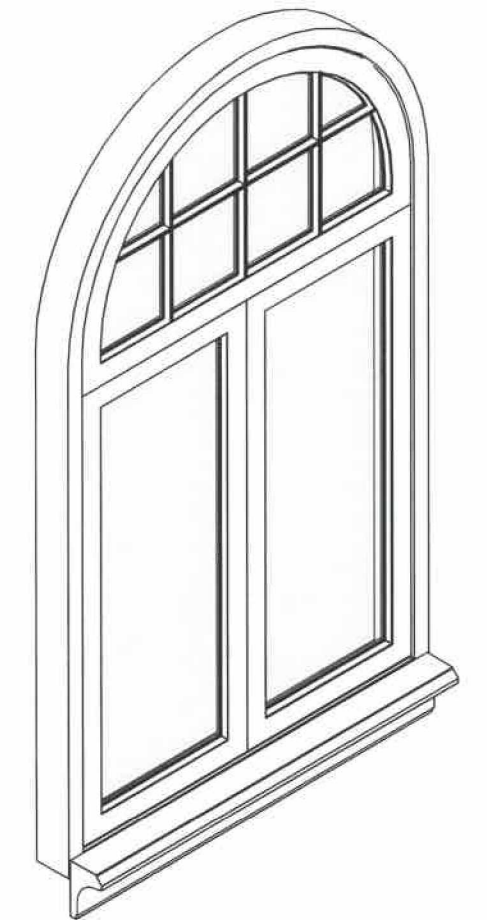
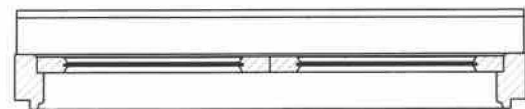
type I



2375



1320

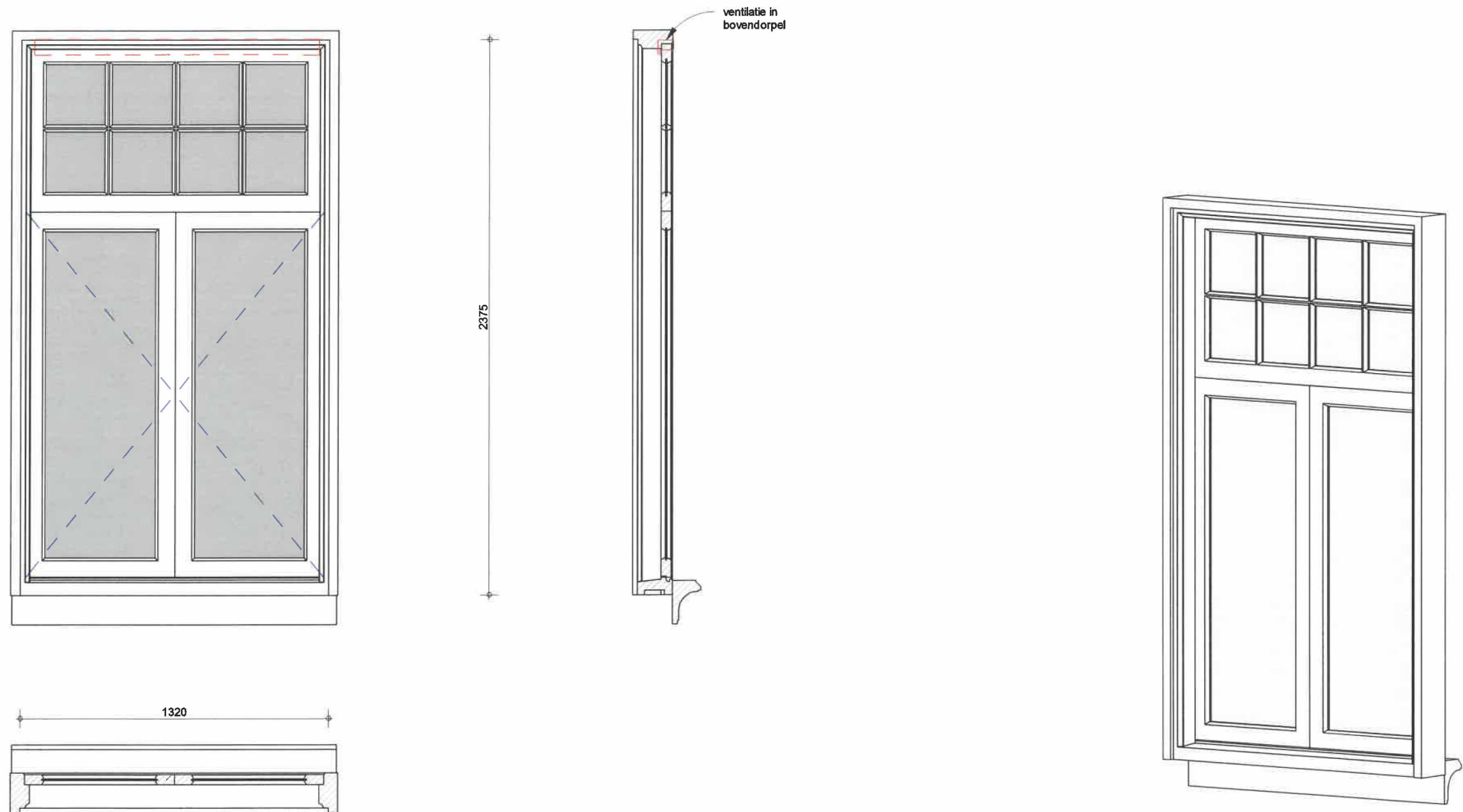


voor principe details zie tek.09-01 blad 01, 02, 03, 04 en 05

maten in het werk te controleren
afmeting op tekening is indicatie

Kozijnblad

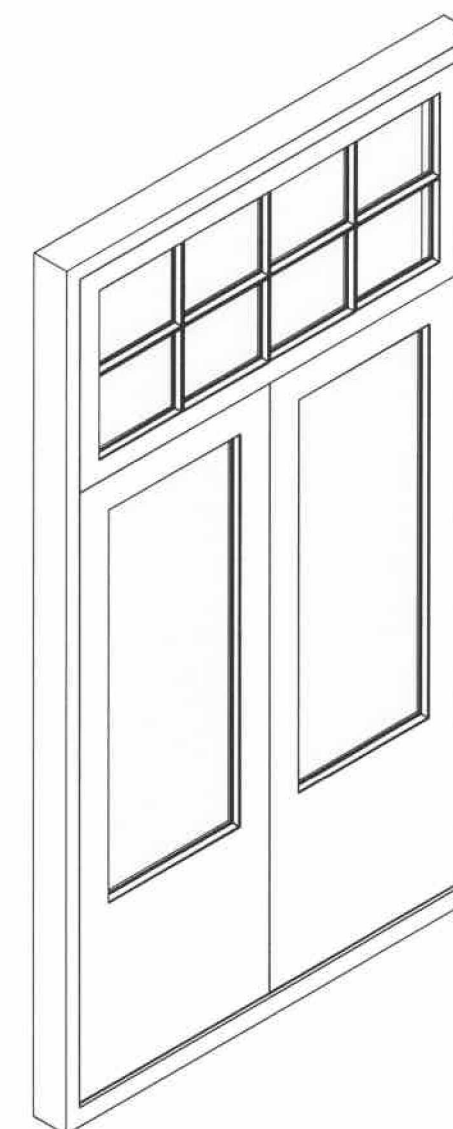
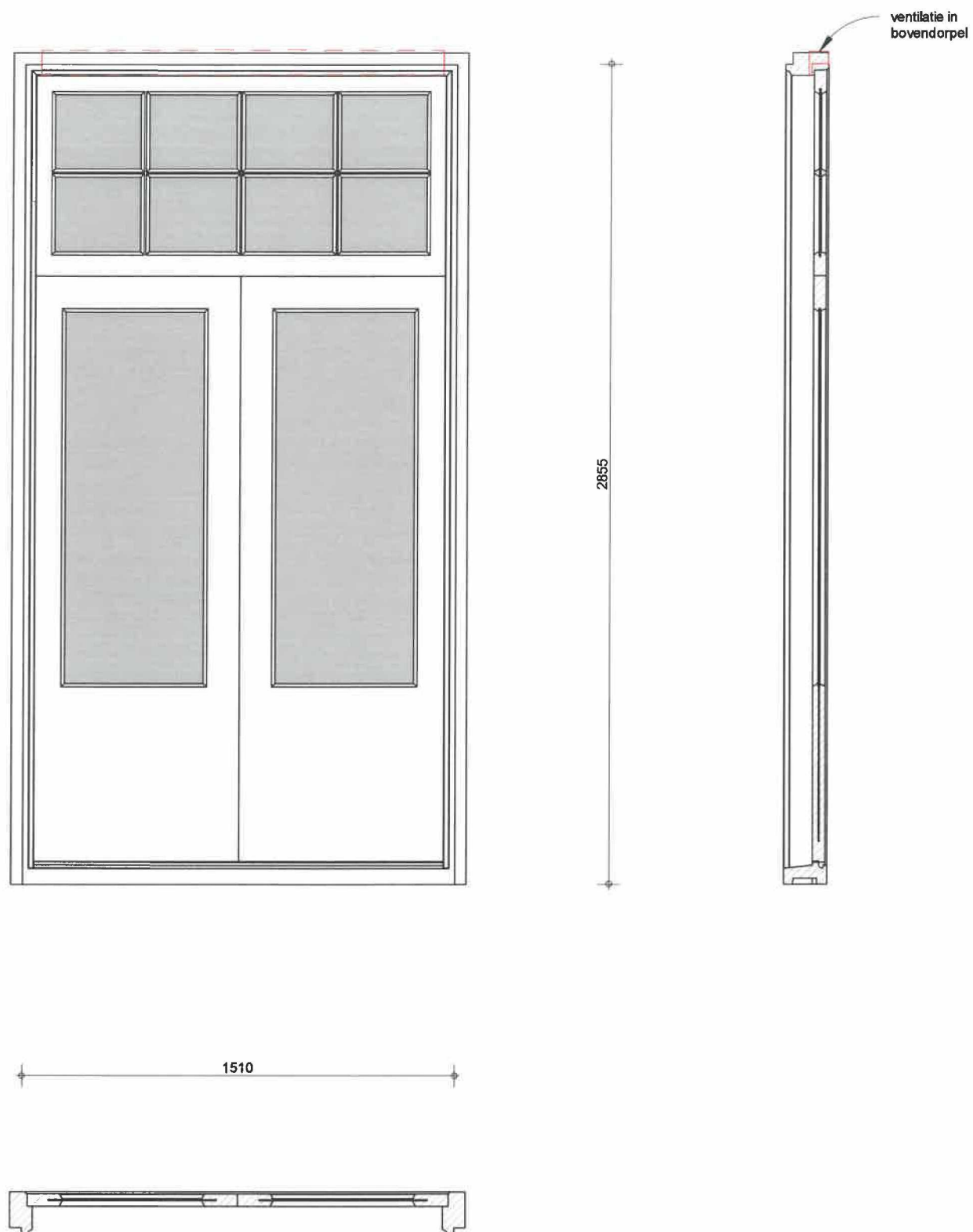
type J



maten in het werk te controleren
afmeting op tekening is indicatie

Kozijnblad

type K

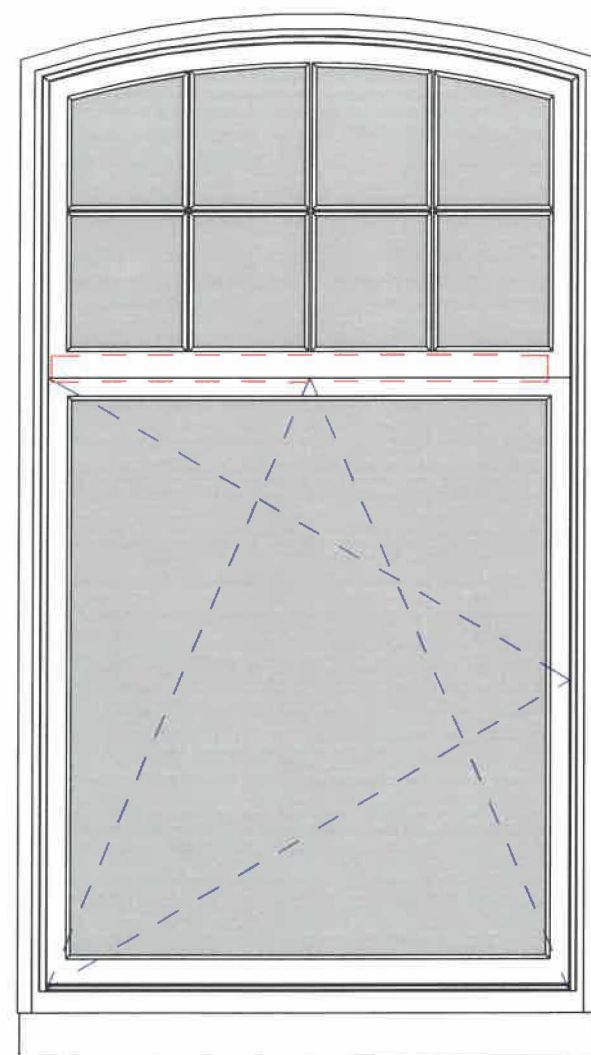


voor principe details zie tek.09-01 blad 01, 02, 03, 04 en 05

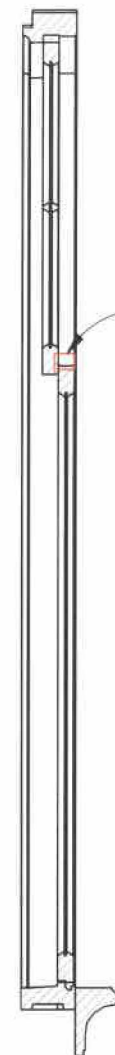
maten in het werk te controleren
afmeting op tekening is indicatie

Kozijnblad

type L

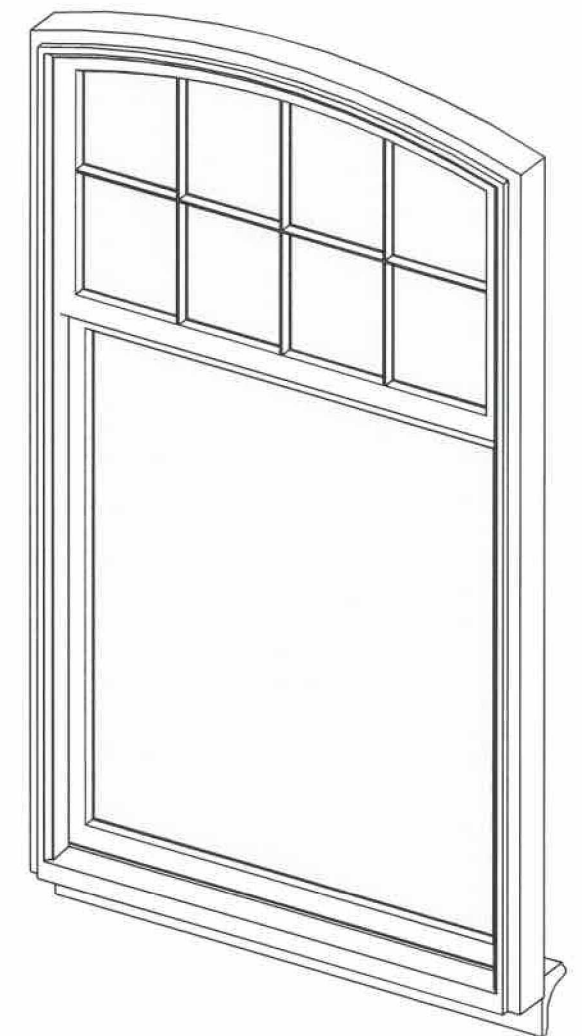
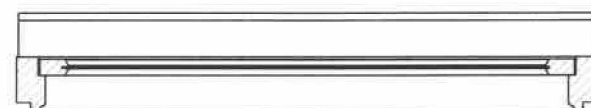


2690



ventilatie in
bovendorpel

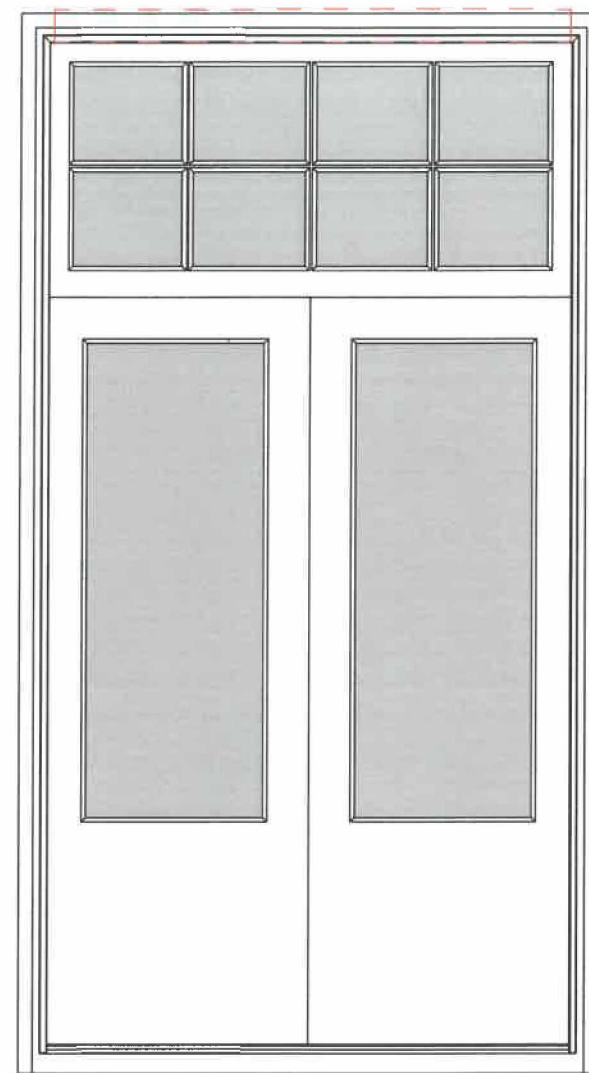
1510



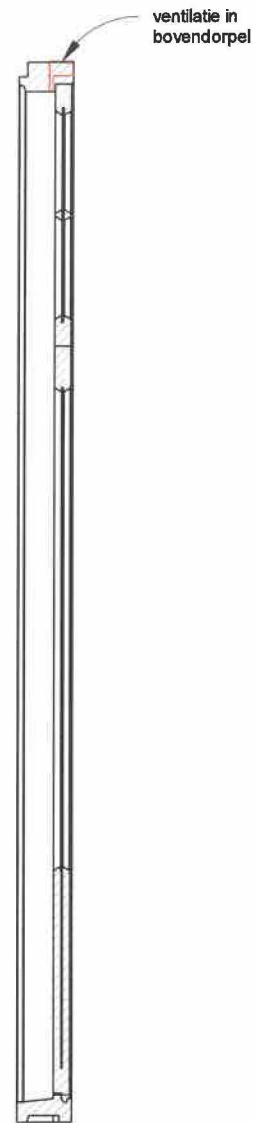
maten in het werk te controleren
afmeting op tekening is indicatie

Kozijnblad

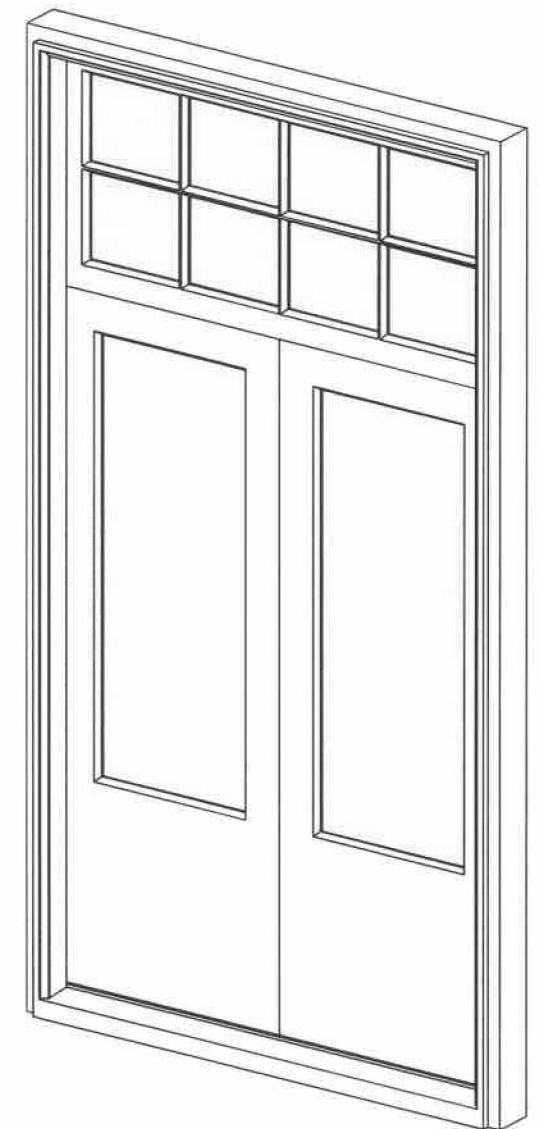
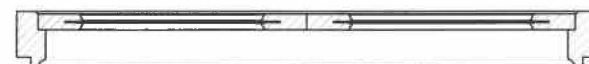
type M



2855



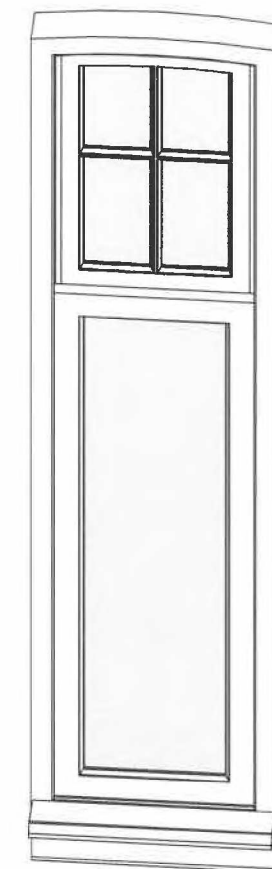
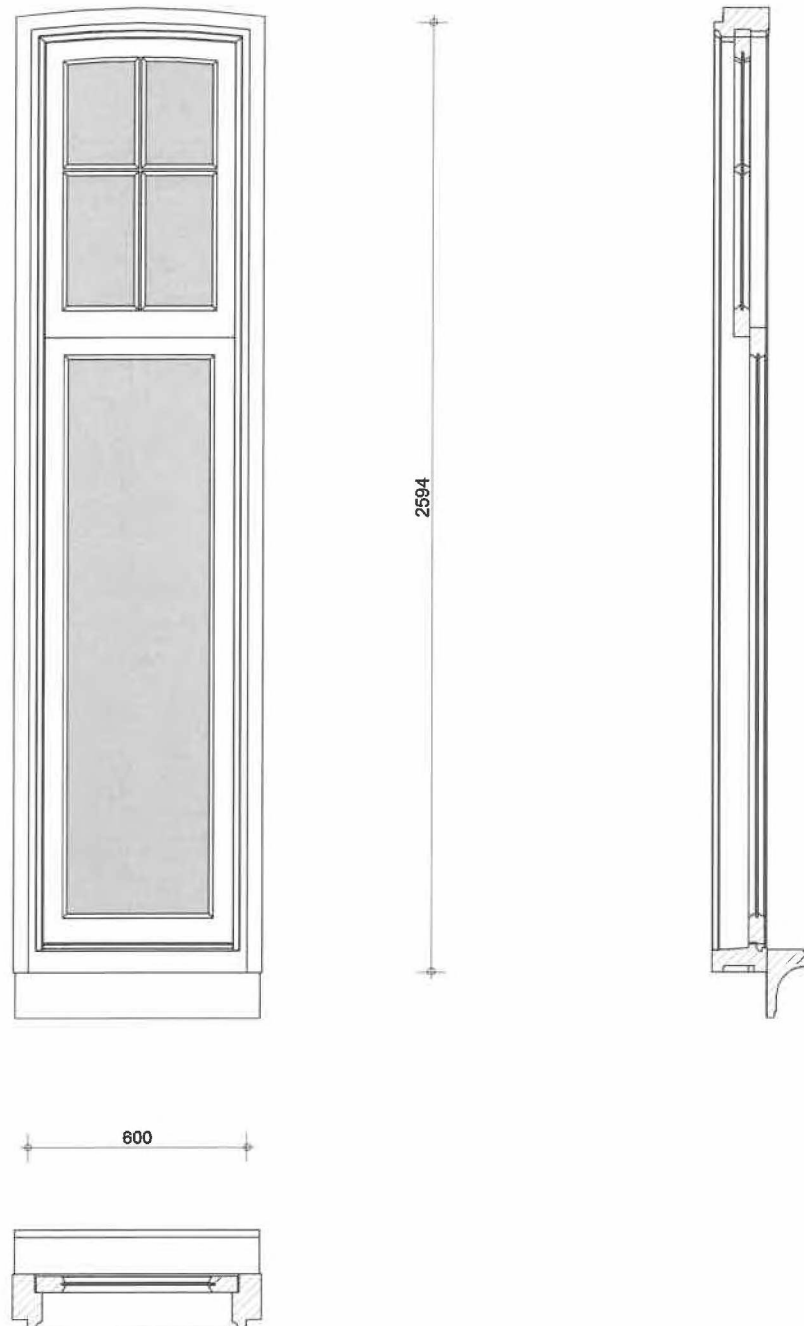
1510



maten in het werk te controleren
afmeting op tekening is indicatie

Kozijnblad

type N

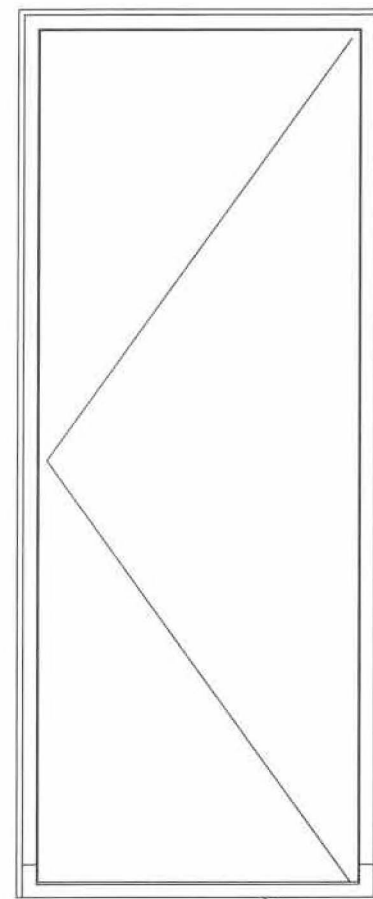


voor principe details zie tek.09-01 blad 01, 02, 03, 04 en 05

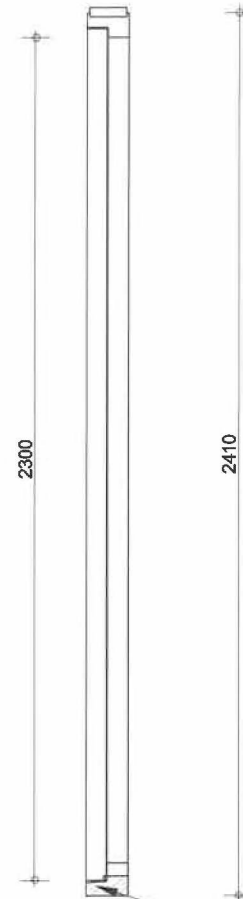
maten in het werk te controleren
afmeting op tekening is indicatie

Kozijnblad

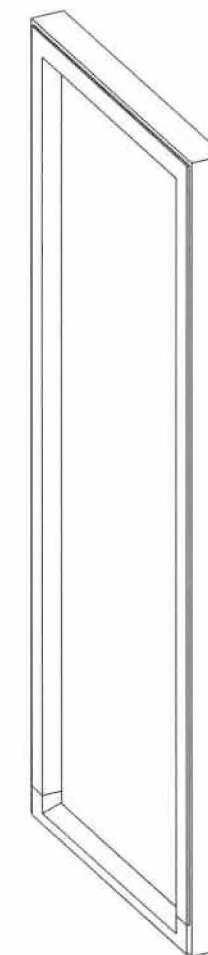
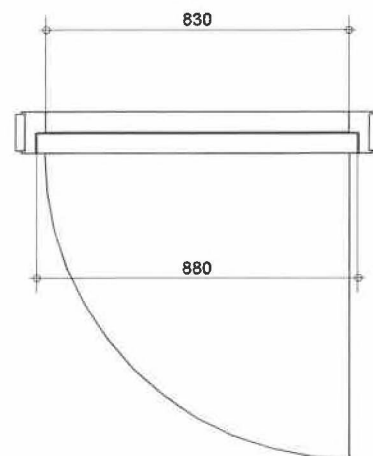
type N1



hardstenen
onderdorpel
met neuten



hardstenen
onderdorpel
met neuten

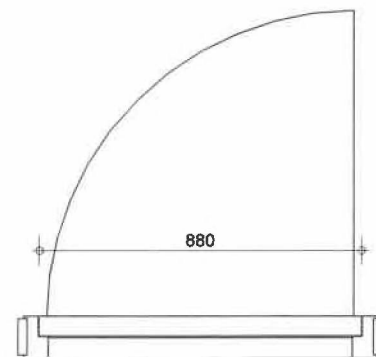
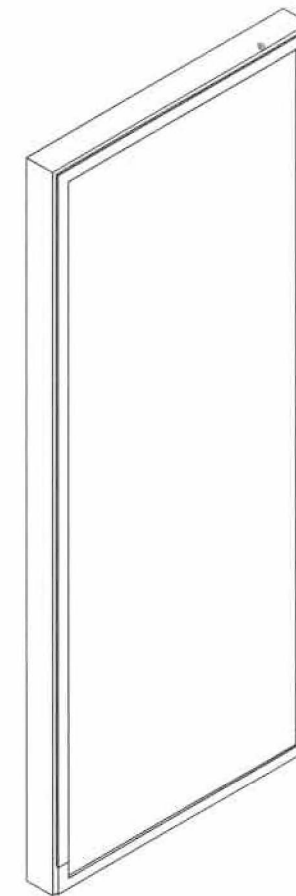
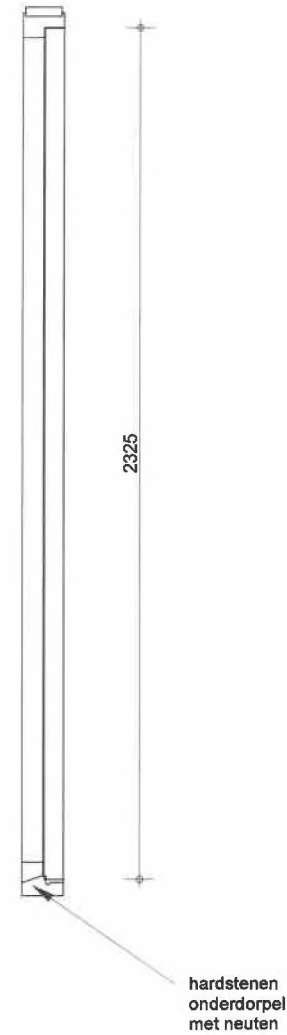
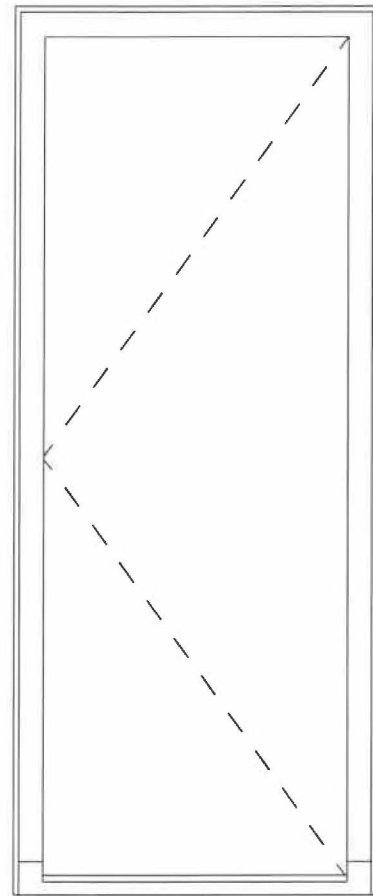


voor principe details zie tek.09-01 blad 01, 02, 03, 04 en 05

maten in het werk te controleren
afmeting op tekening is indicatie

Kozijnblad

type N2

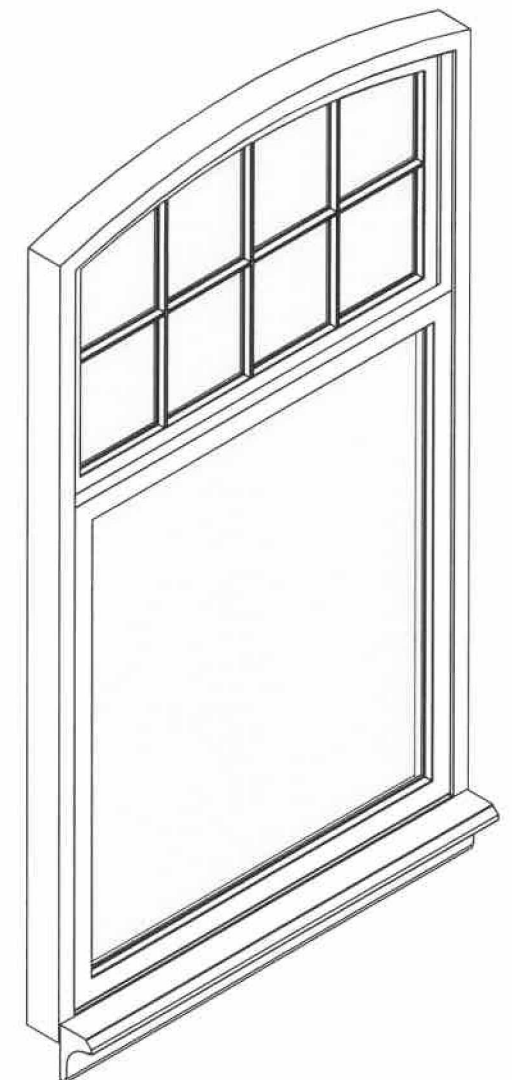
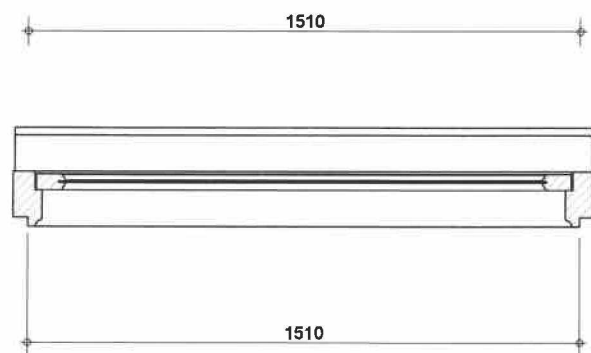
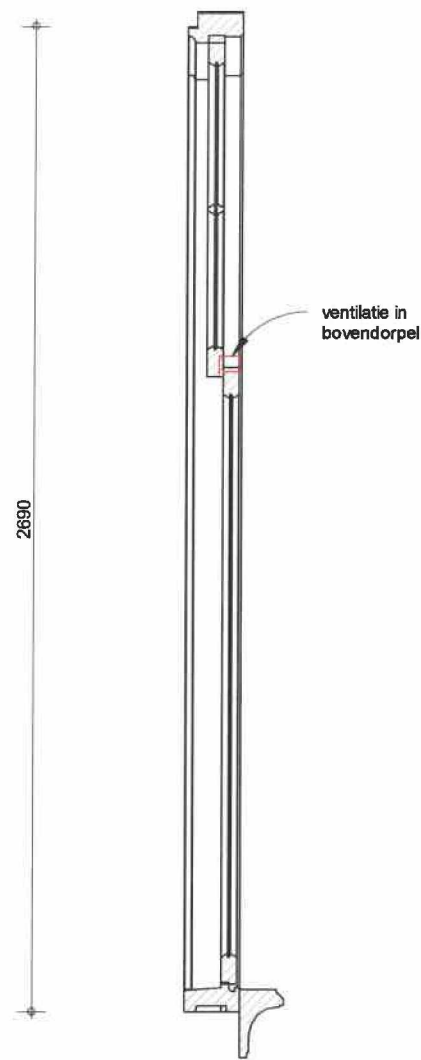
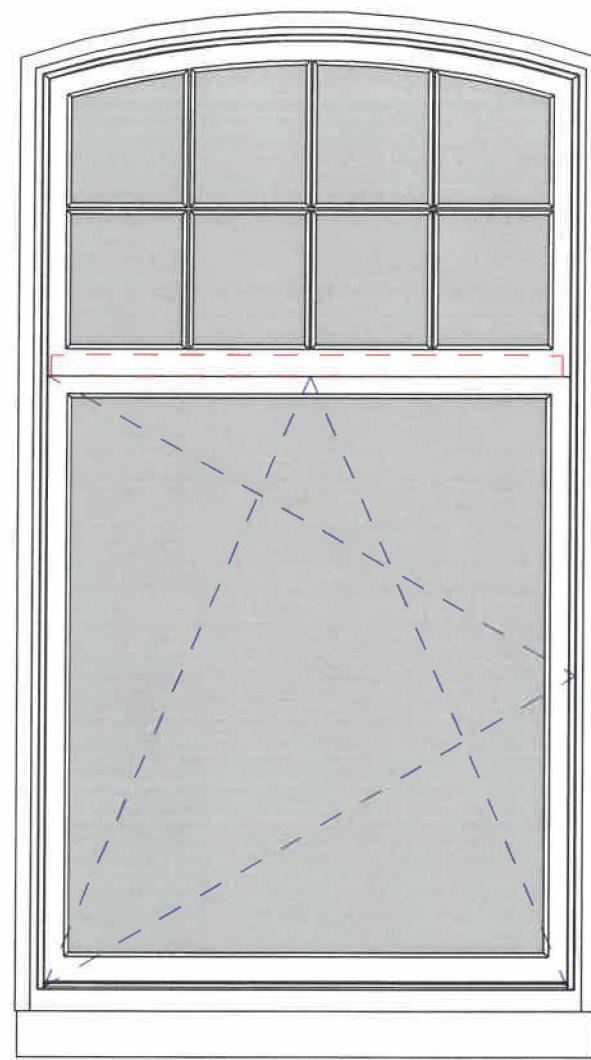


voor principe details zie tek.09-01 blad 01, 02, 03, 04 en 05

maten in het werk te controleren
afmeting op tekening is indicatie

Kozijnblad

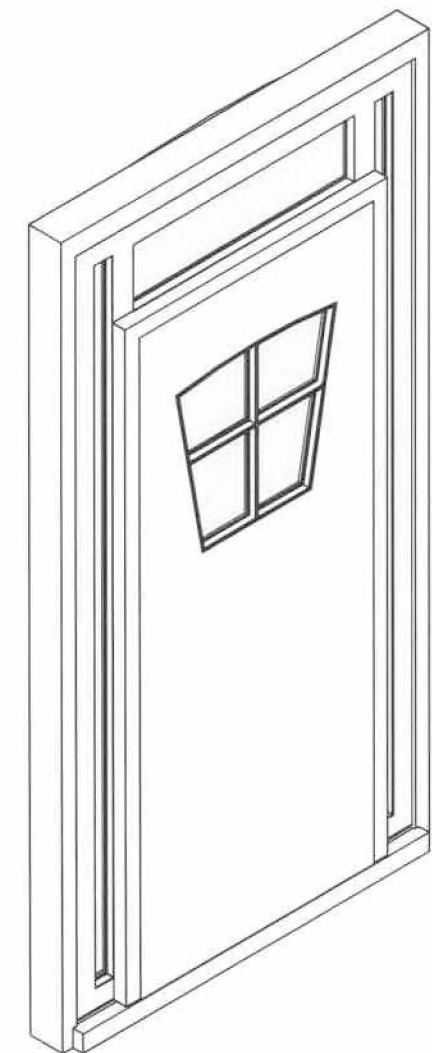
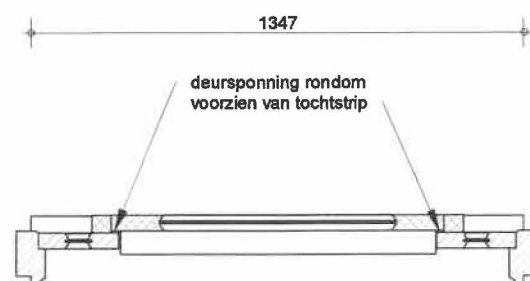
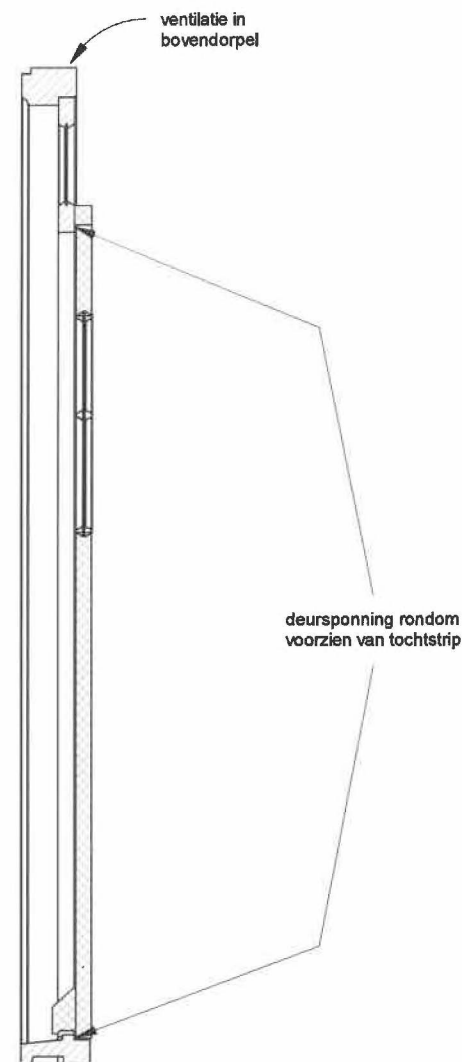
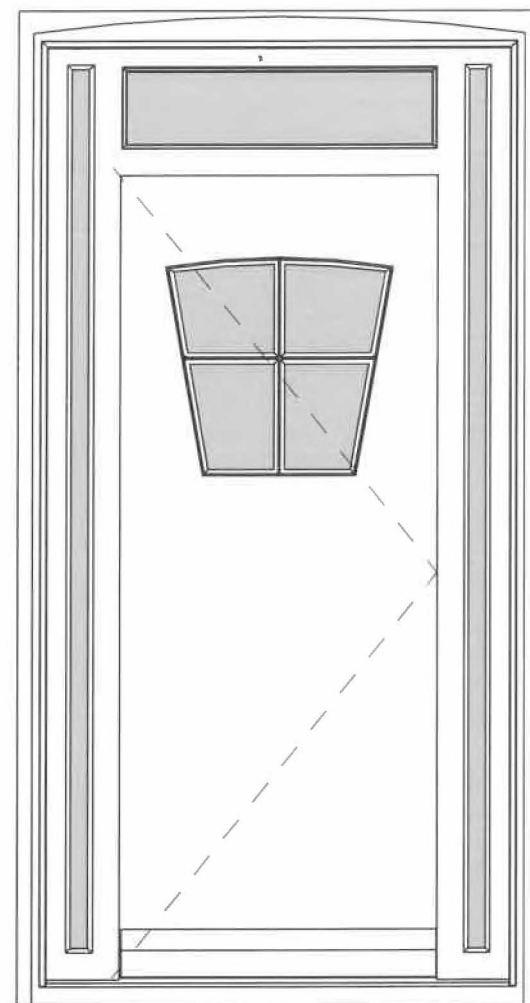
type O



maten in het werk te controleren
afmeting op tekening is indicatie

Kozijnblad

type P

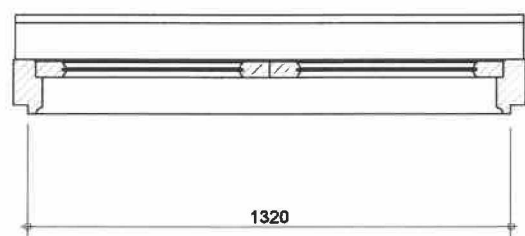
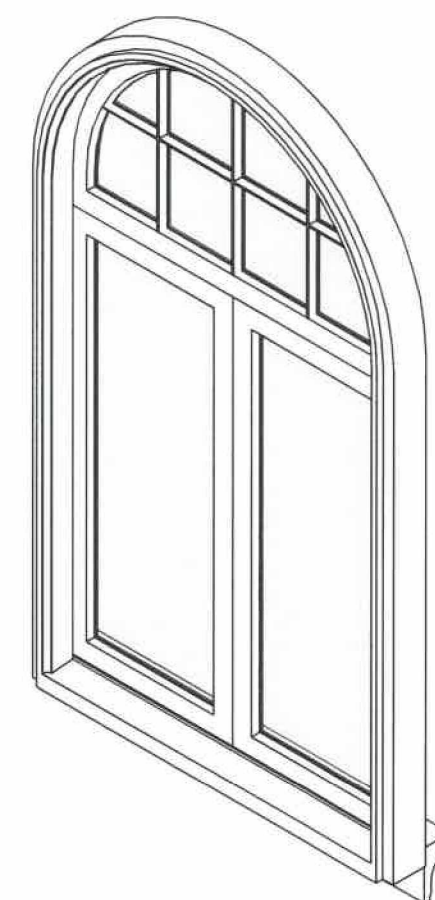
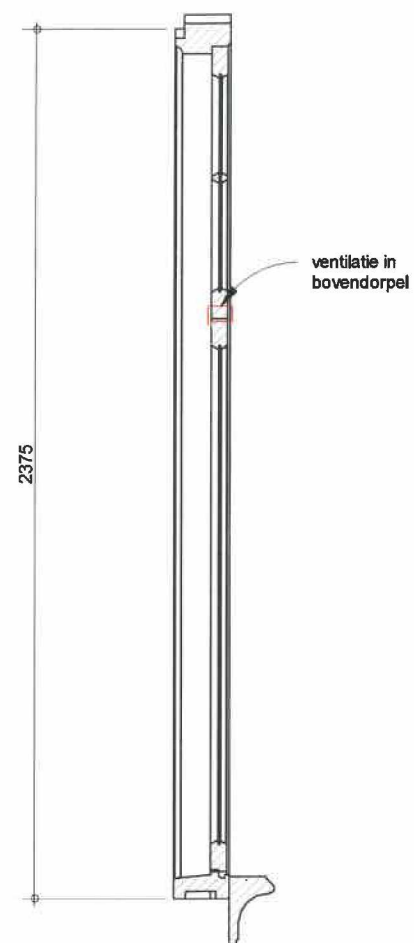
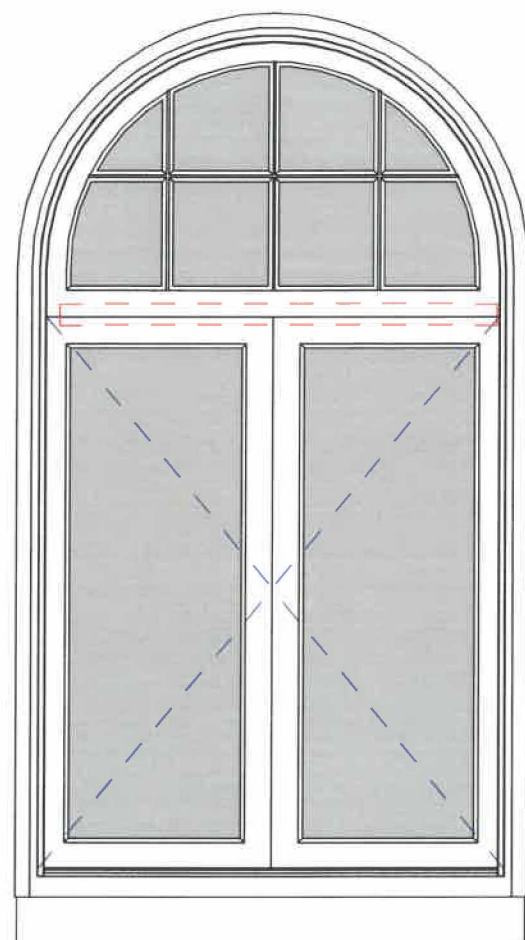


voor principe details zie tek.09-01 blad 01, 02, 03, 04 en 05

maten in het werk te controleren
afmeting op tekening is indicatie

Kozijnblad

type Q

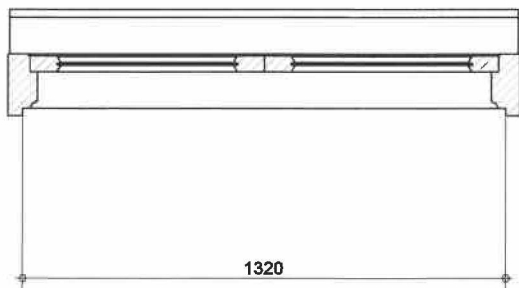
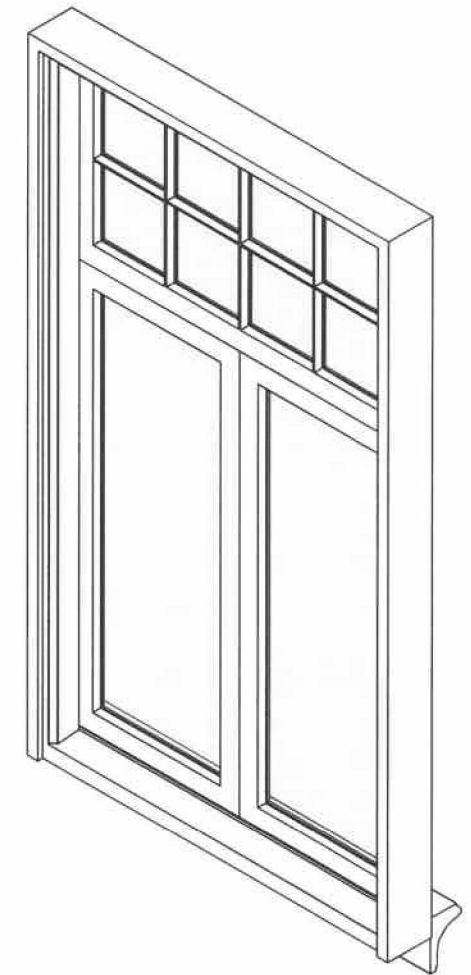
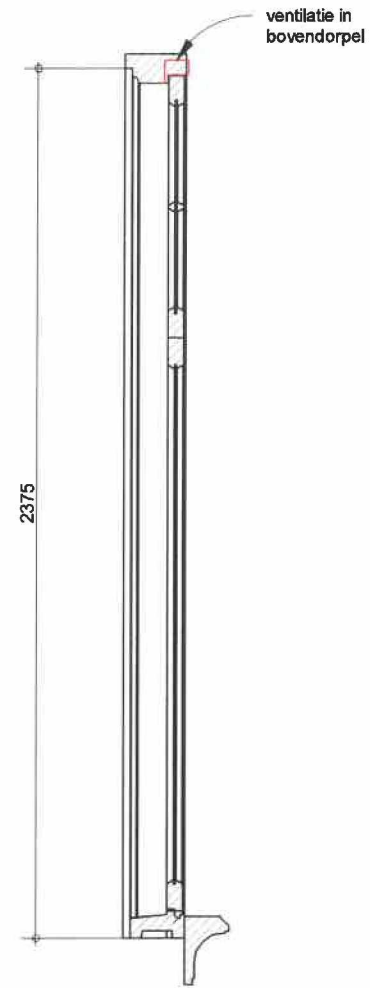
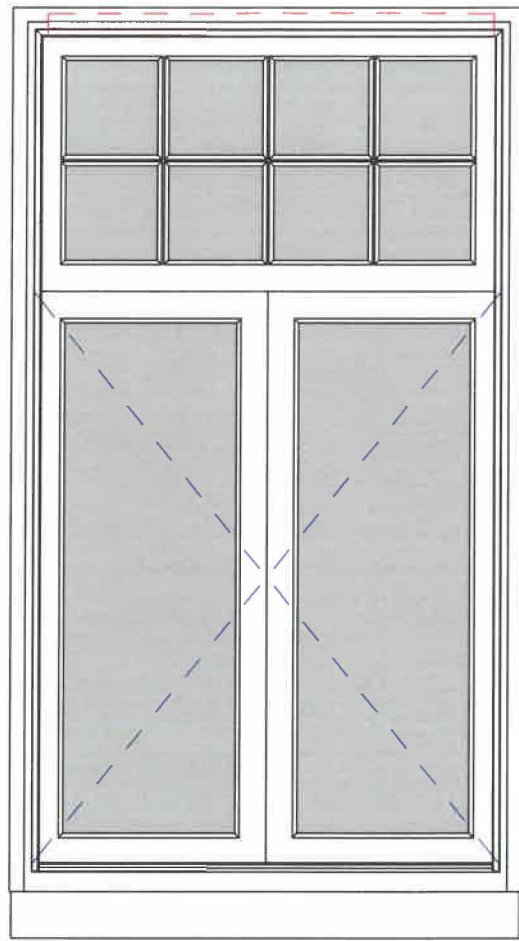


voor principe details zie tek.09-01 blad 01, 02, 03, 04 en 05

maten in het werk te controleren
afmeting op tekening is indicatie

Kozijnblad

type R

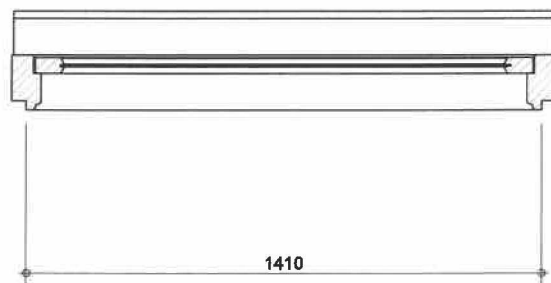
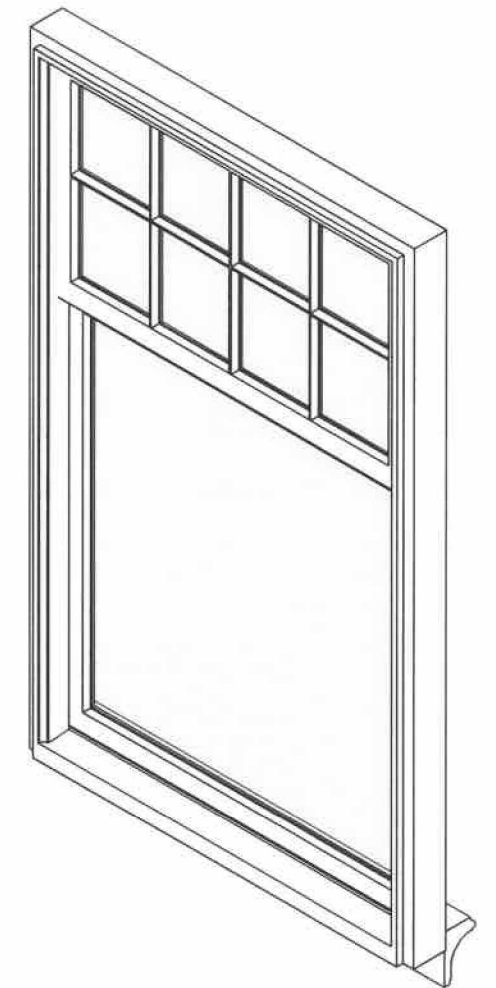
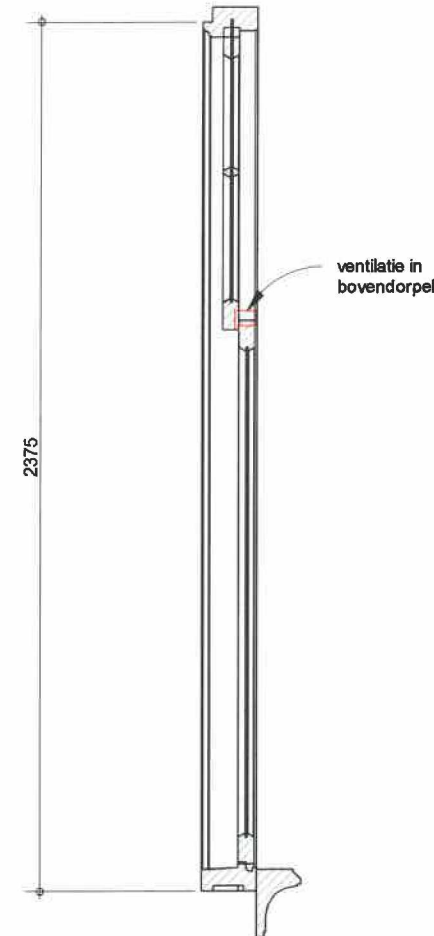
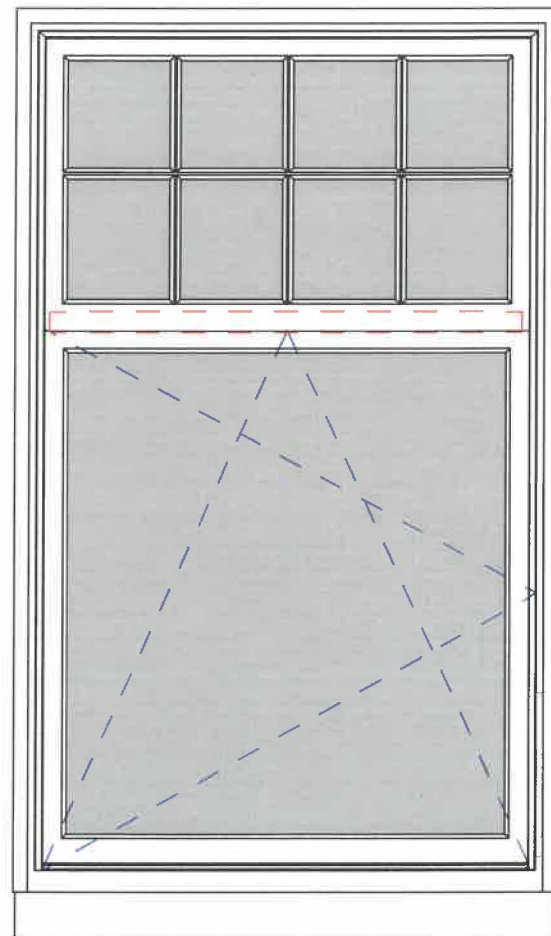


voor principe details zie tek.09-01 blad 01, 02, 03, 04 en 05

maten in het werk te controleren
afmeting op tekening is indicatie

Kozijnblad

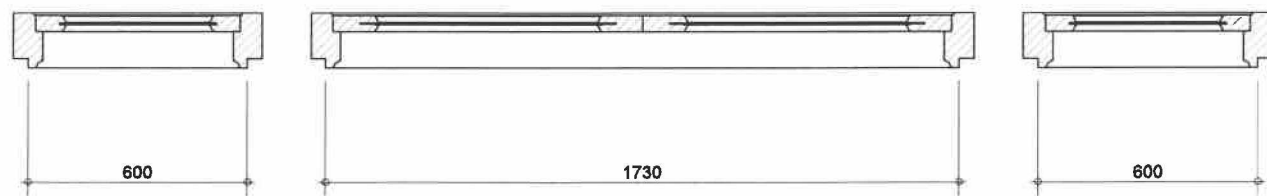
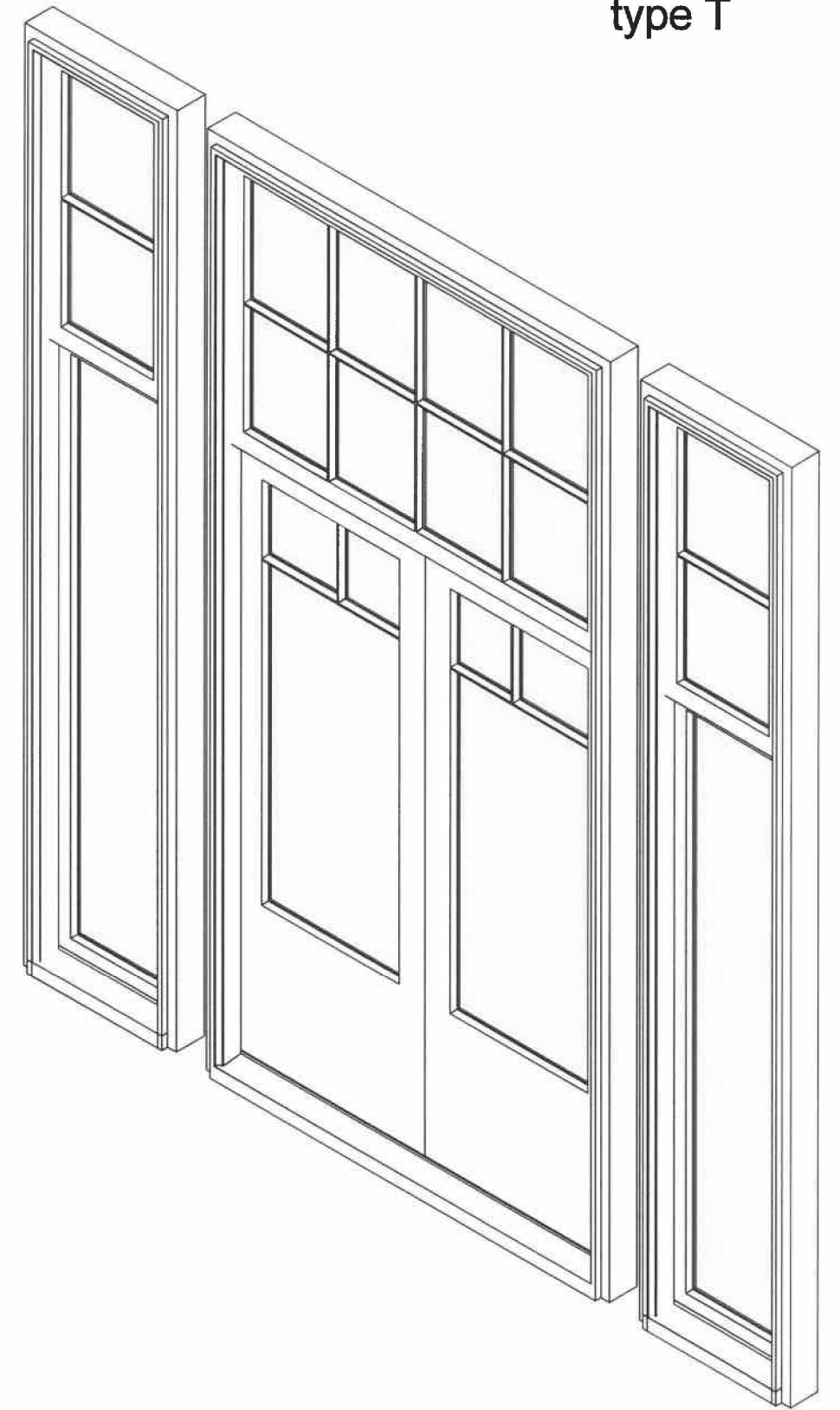
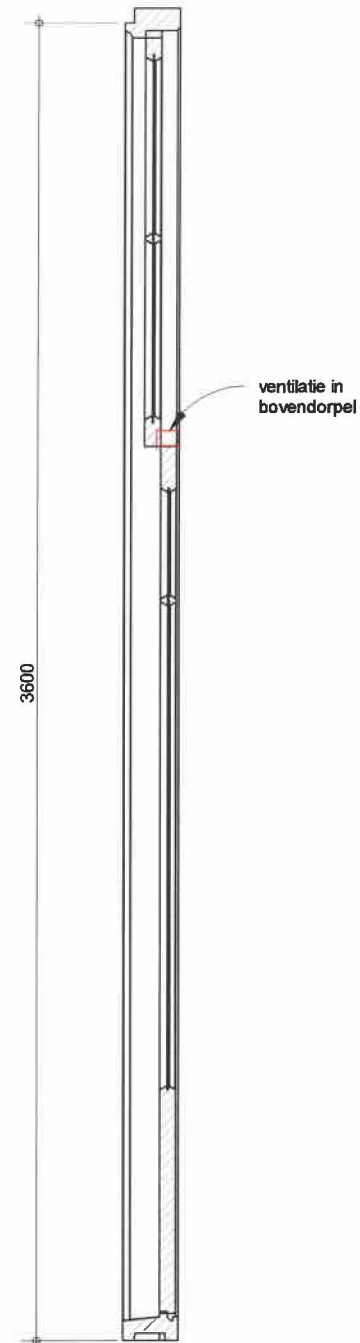
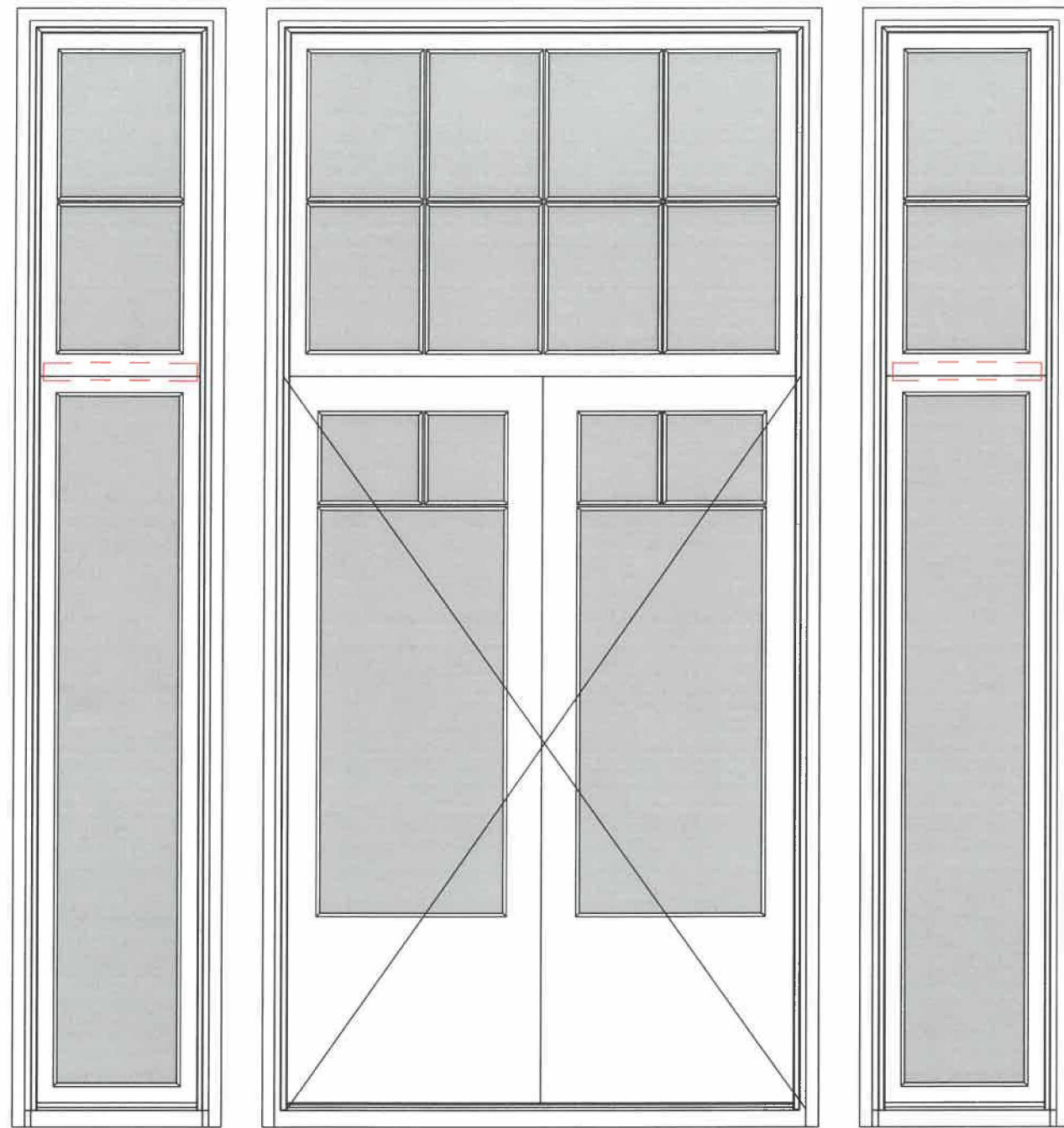
type S



voor principe details zie tek.09-01 blad 01, 02, 03, 04 en 05

maten in het werk te controleren
afmeting op tekening is indicatie

Kozijnblad type T

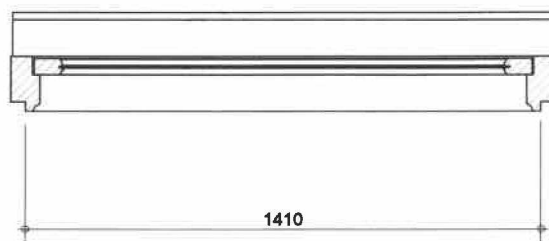
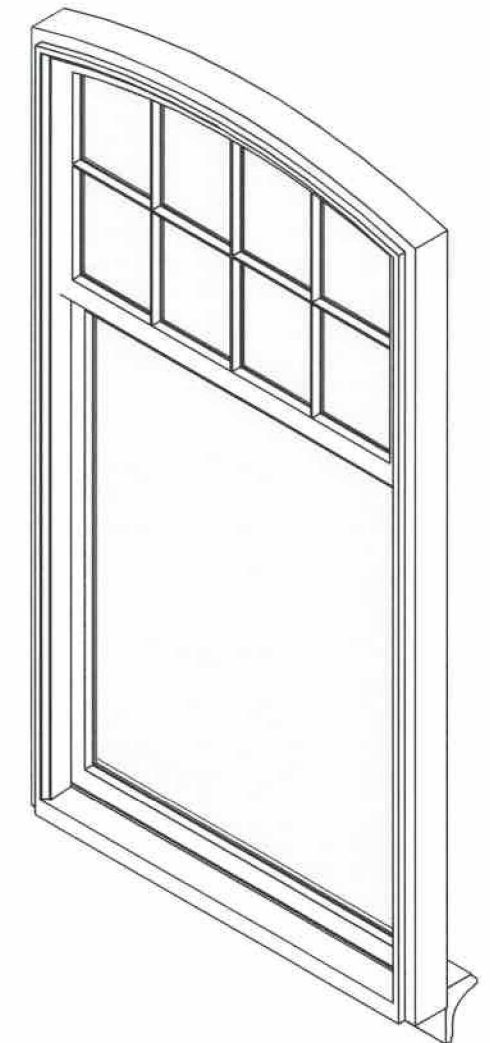
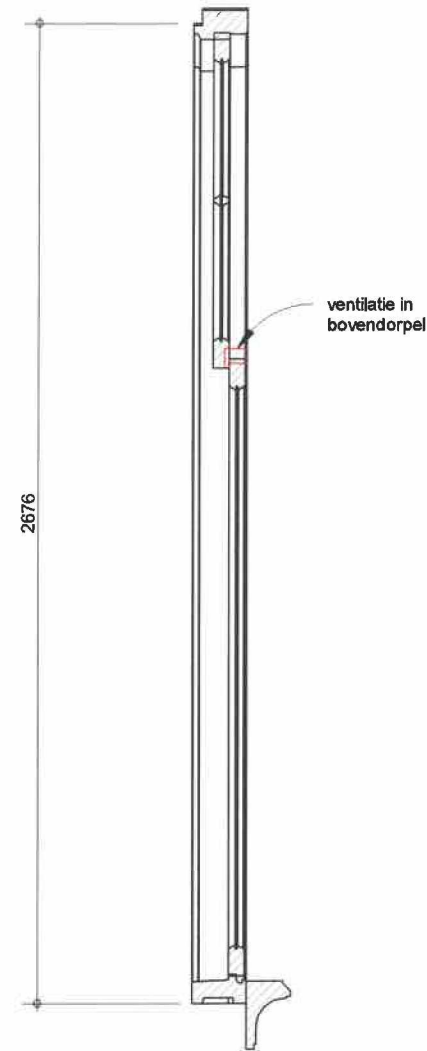
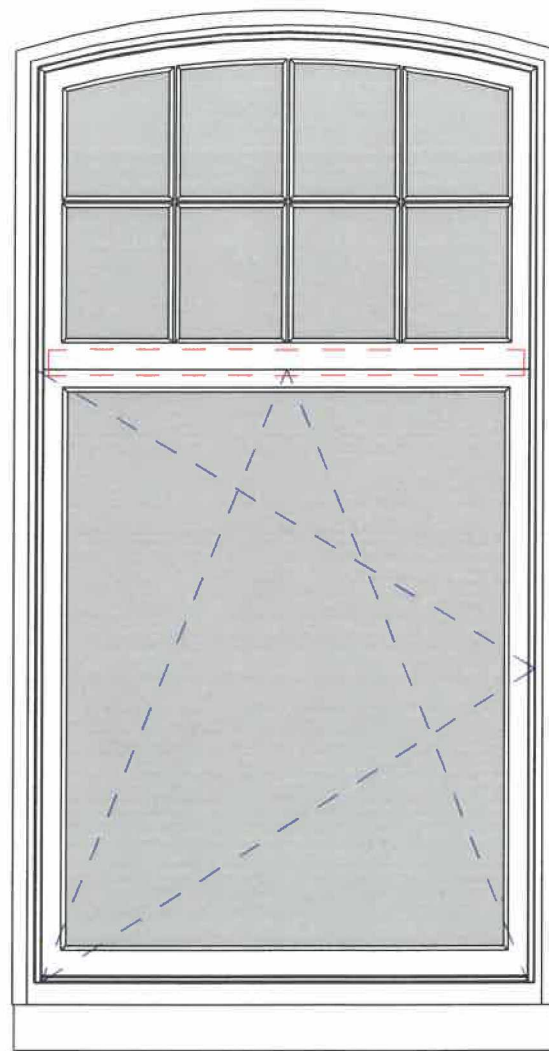


voor principe details zie tek.09-01 blad 01, 02, 03, 04 en 05

maten in het werk te controleren
afmeting op tekening is indicatie

Kozijnblad

type U

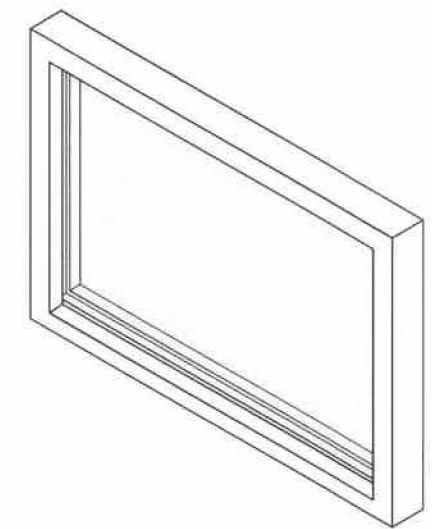
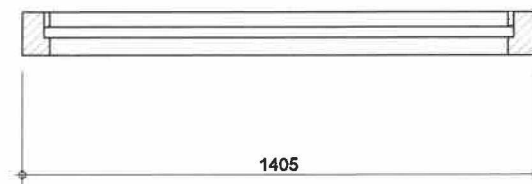
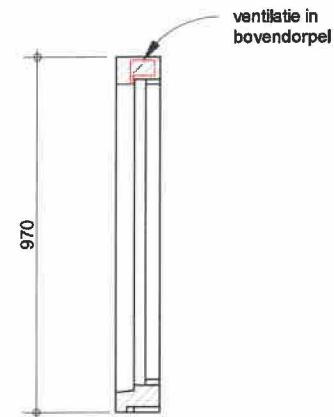
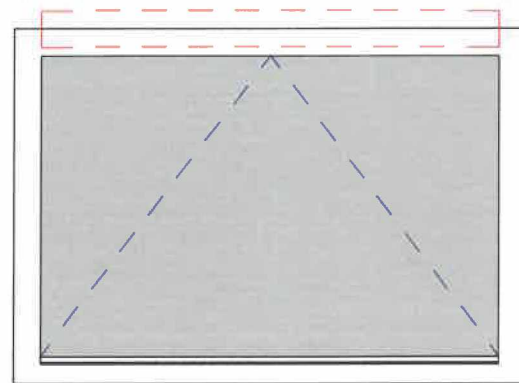


voor principe details zie tek.09-01 blad 01, 02, 03, 04 en 05

maten in het werk te controleren
afmeting op tekening is indicatie

Kozijnblad

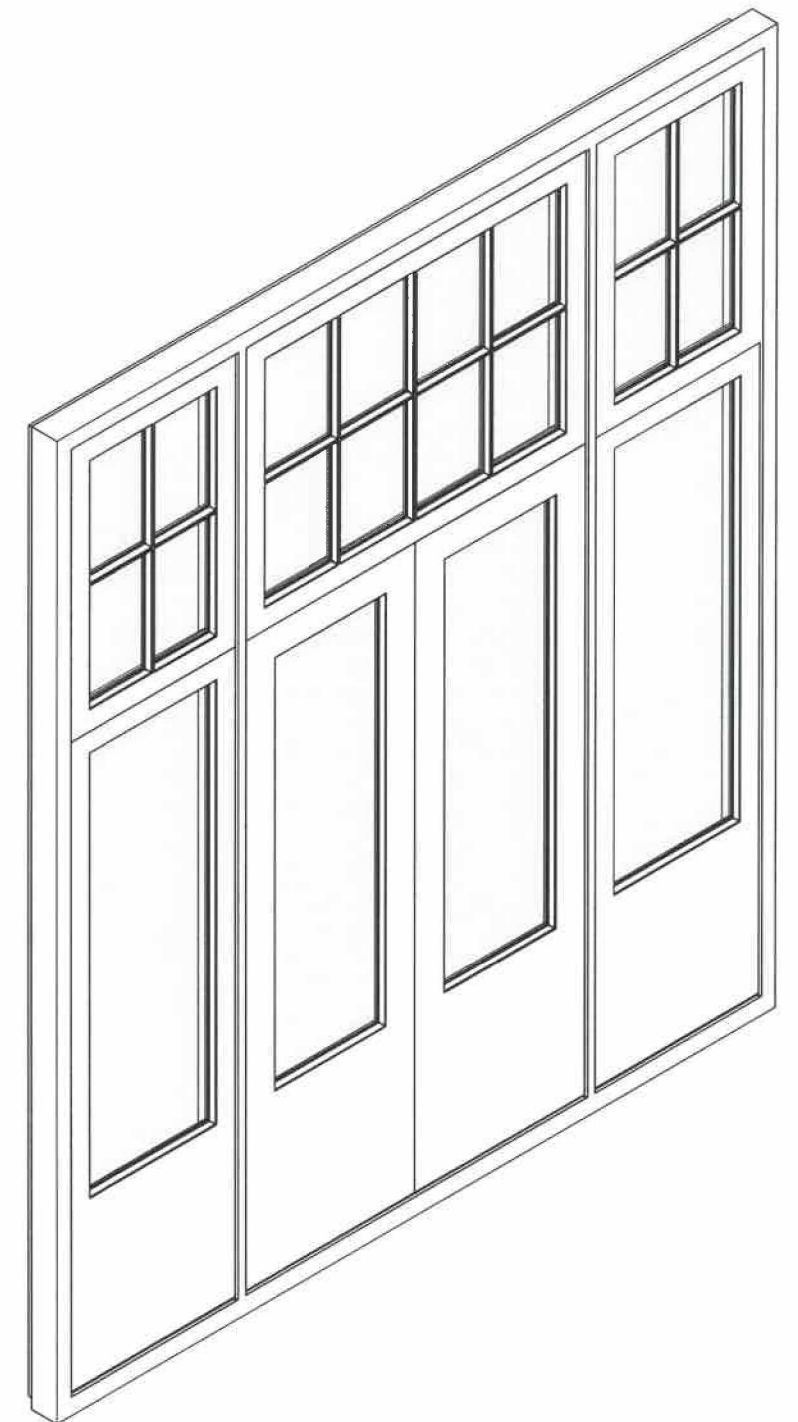
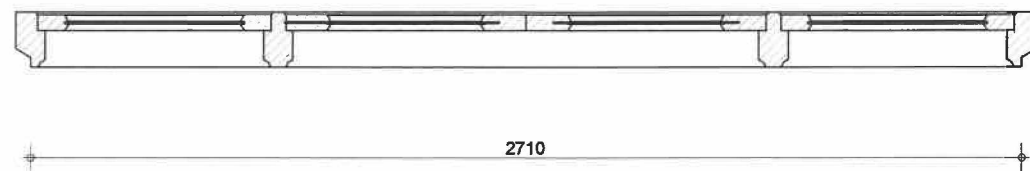
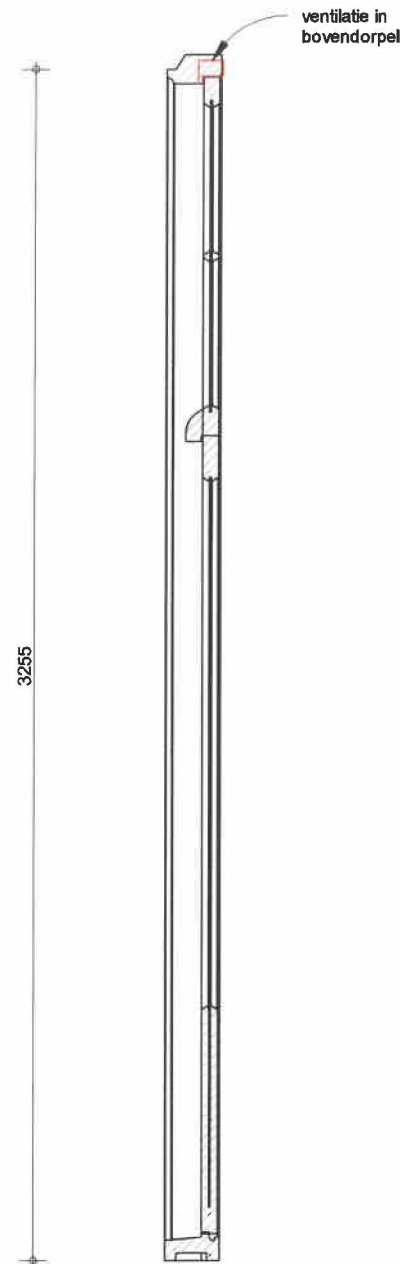
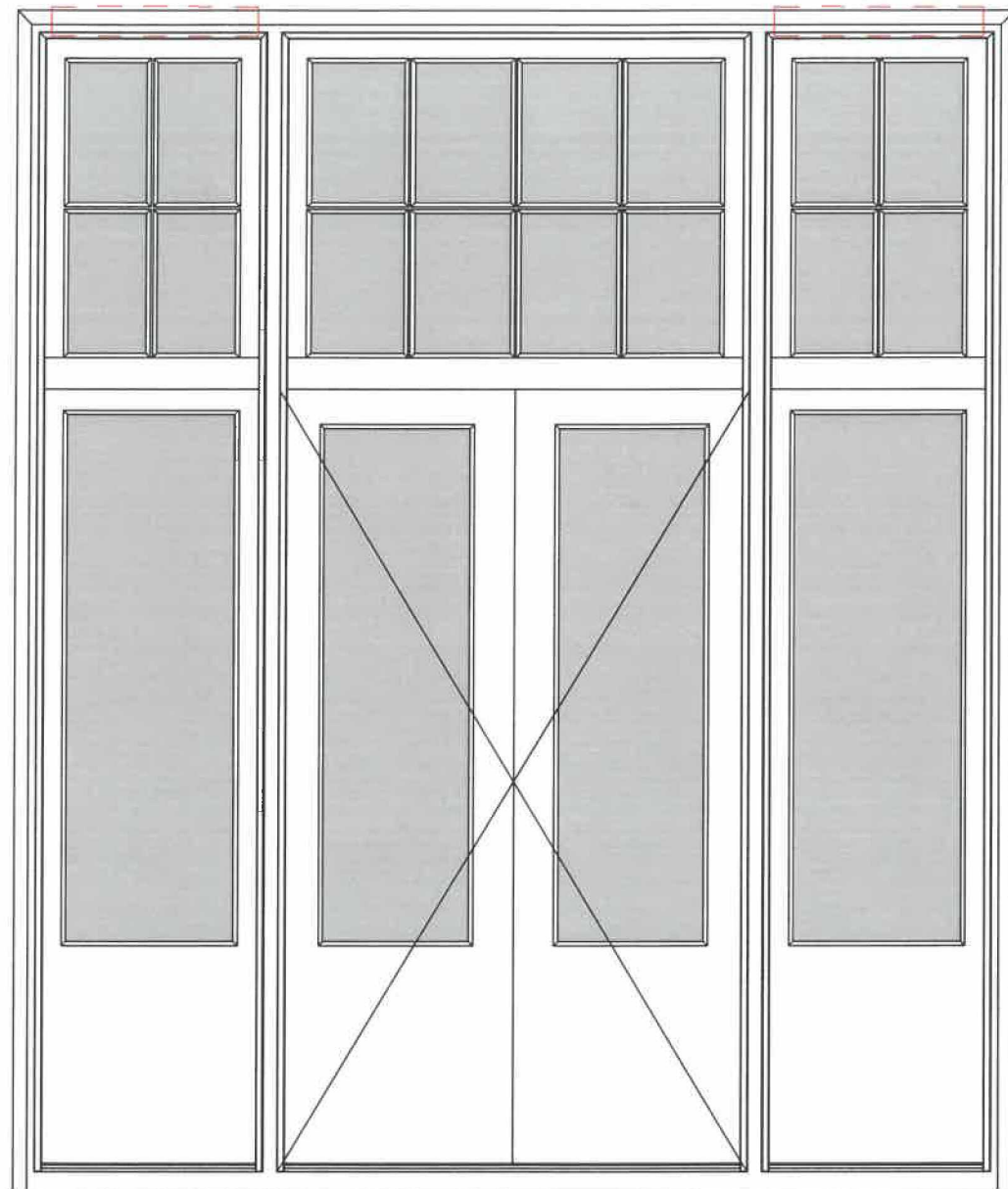
type V



maten in het werk te controleren
afmeting op tekening is indicatie

Kozijnblad

type X



voor principe details zie tek.09-01 blad 01, 02, 03, 04 en 05