



verkenning Rhenenhof
15 juni 2021

DAM
&
PARTNERS
ARCHITECTEN

1. terugblik

conclusies voorgaande sessies

input bewoners Rhenenhof

AANDACHTSPUNTEN STEDENBOUWKUNDIGE INPASSING

- Exclusieve verdichting in centrumgebied Reigersbos
- Geen ontsluiting Renkumhof via Rhenenhof
- Sterke aanhechting aan collectieve ruimte (opheffen route autoverkeer)
- Versterken van parkachtige scheg Reigersbosdreef
- Betere benutting talud
- Zoekgebied bouwvolume nabij rotonde

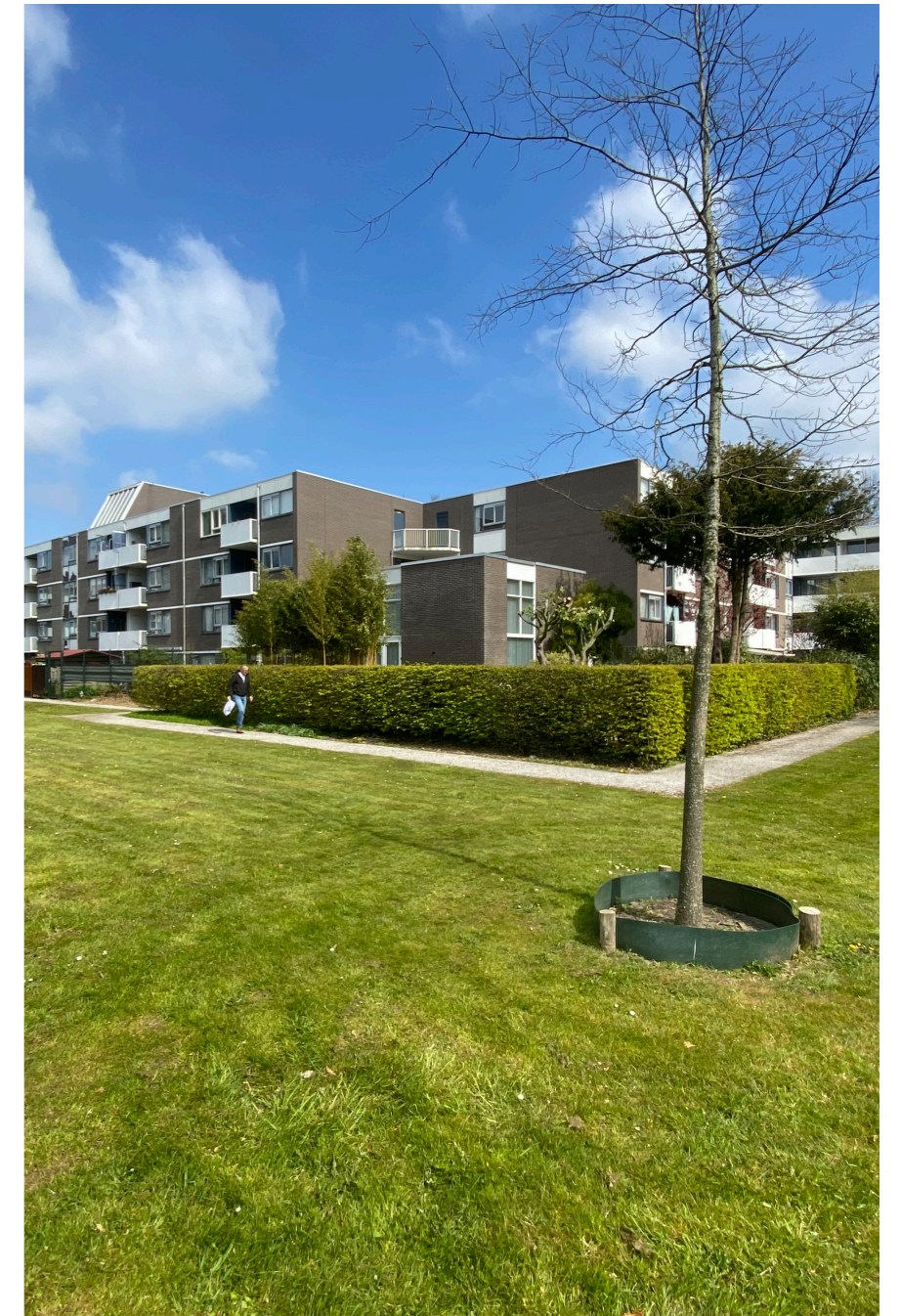


conclusies voorgaande sessies

input bewoners Renkumhof

AANDACHTSPUNTEN PROGRAMMA

- Beschikbaarheid fietsparkeerruimte
- Speel- en recreatievoorzieningen in collectieve ruimte
- Behoud van parkeerruimte
- (mono)functioneel programma; (senioren)woningen sociaal/middensegment
- Versterken sociale structuur/cohesie van het hof



conclusies voorgaande sessies

input bewoners Renkumhof

AANDACHTSPUNTEN MOGELIJK BOUWVOLUME

- Houtbouw en duurzame esthetiek
- Groene balkons/gevels
- Zachte aanhechting
- Laagbouw/hoogbouw
- Uniformiteit nieuwbouw Renkumhof - Rhenenhof



conclusies voorgaande sessies

ontwerpthema's

1 - bouwvolume



2 - inrichting maaiveld



3 - expressie duurzaamheid



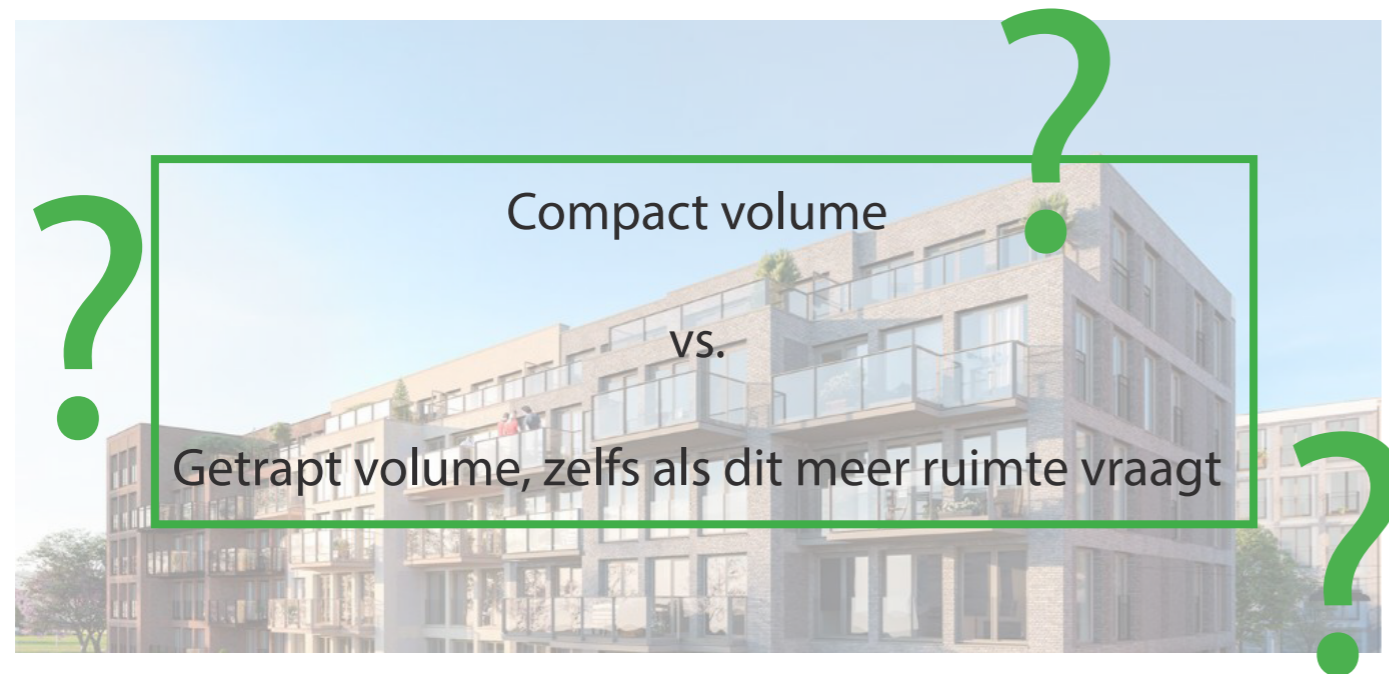
4 - bouwproces



conclusies voorgaande sessies

ontwerpthema's

1 - bouwvolume



2 - inrichting maaiveld



3 - expressie duurzaamheid

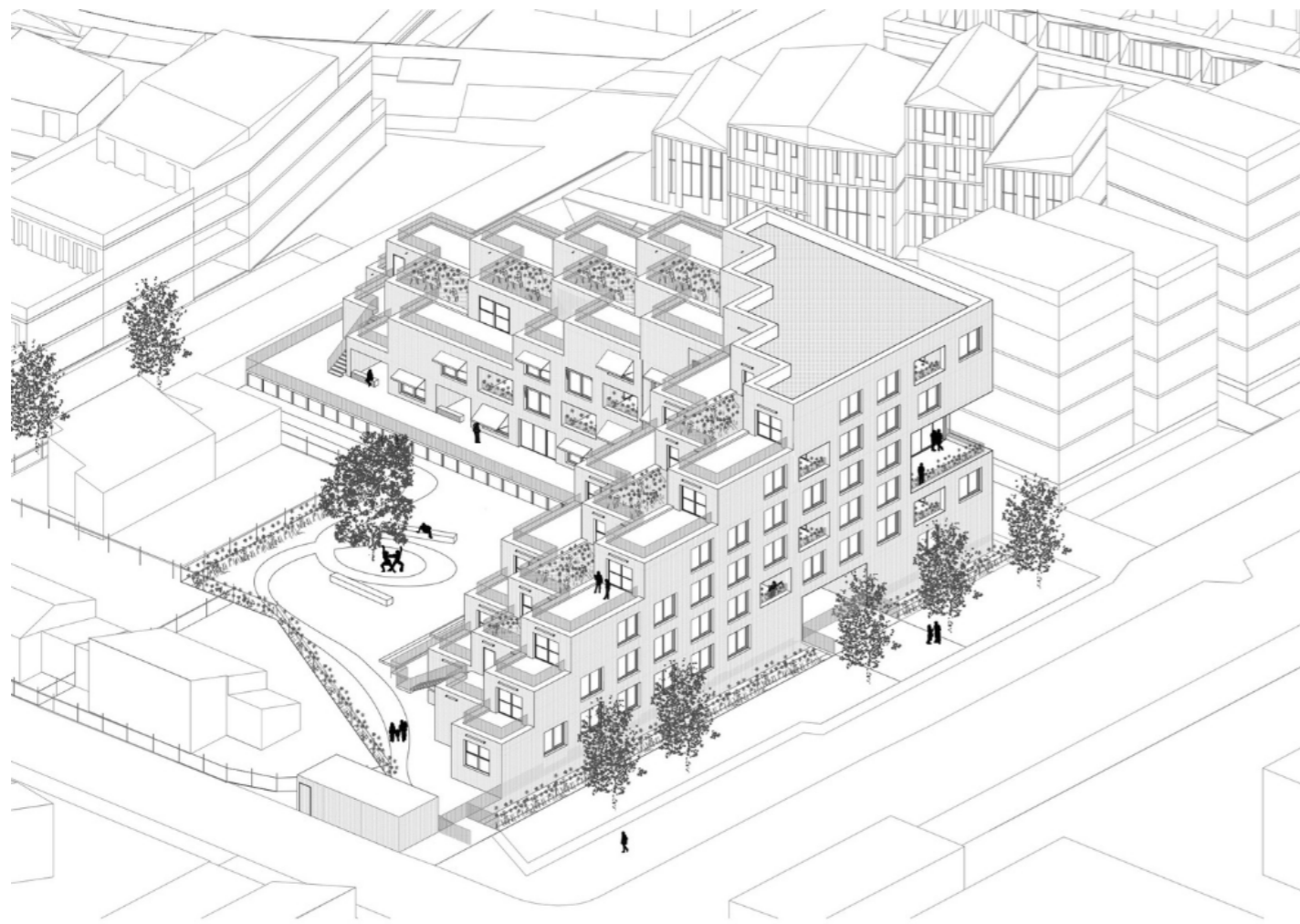


4 - bouwproces



2. referenties

1 - bouwvolume



Sophie Delhay Architecte

Woongebouw Dijon, FR



1 - bouwvolume



Foster + Partners

Woongebouw Dogpatch Power Station, USA



CF Møller

Kajstaden Tall Timber building, SE

2 - inrichting maaiveld



LANDLAB + Frits van Dongen

Funenpark Amsterdam



KCAP

GWL-terrein Amsterdam

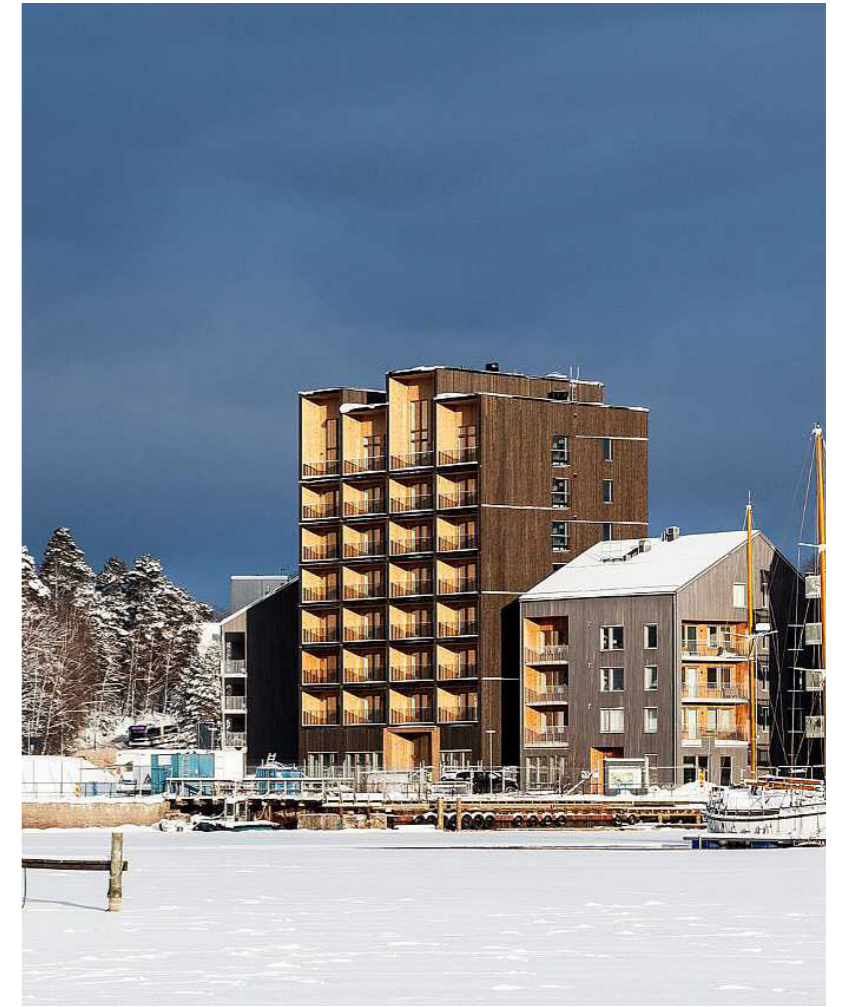
3 - expressie duurzaamheid



MARS Architectes
Woongebouw Parijs, FR

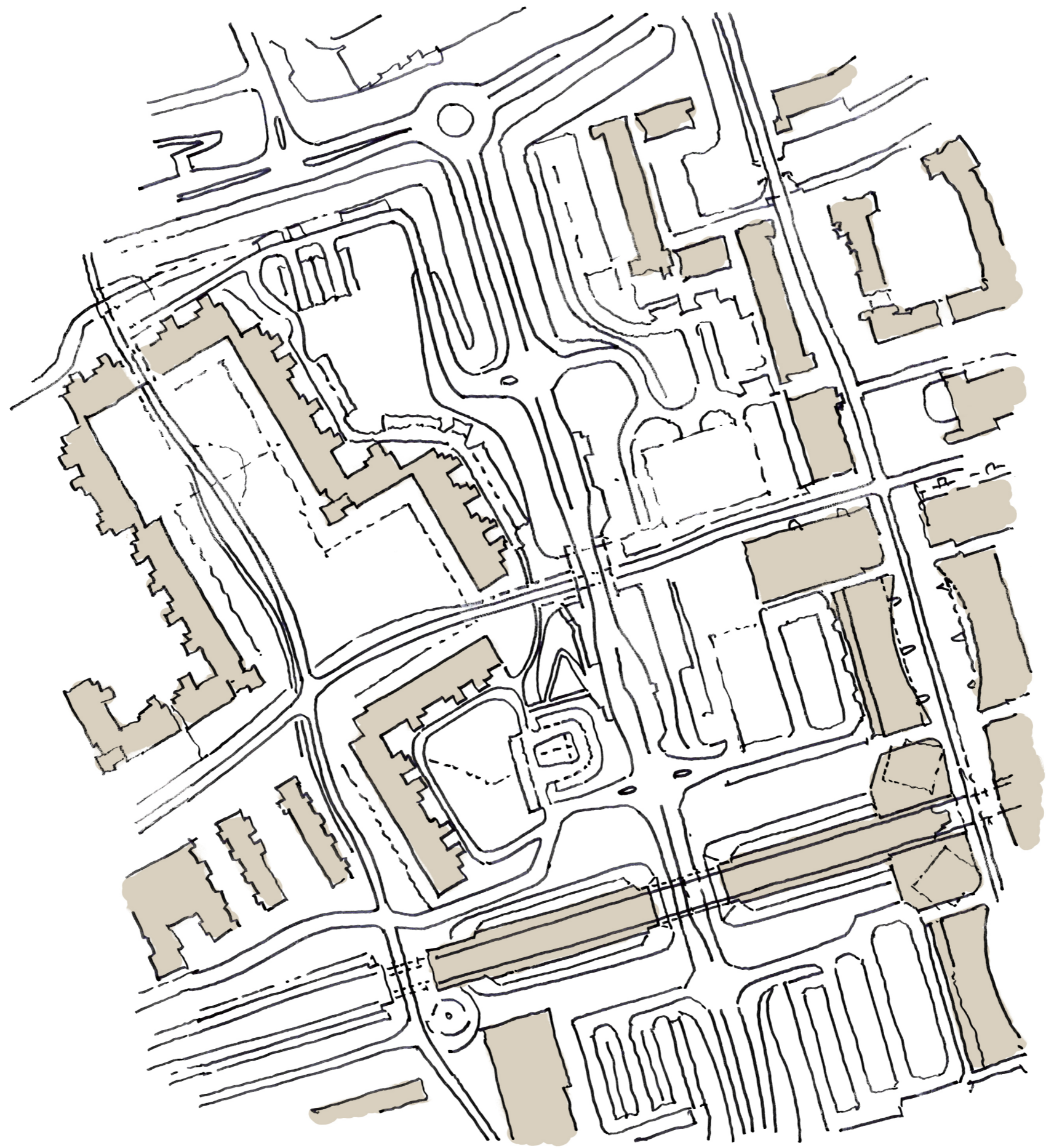


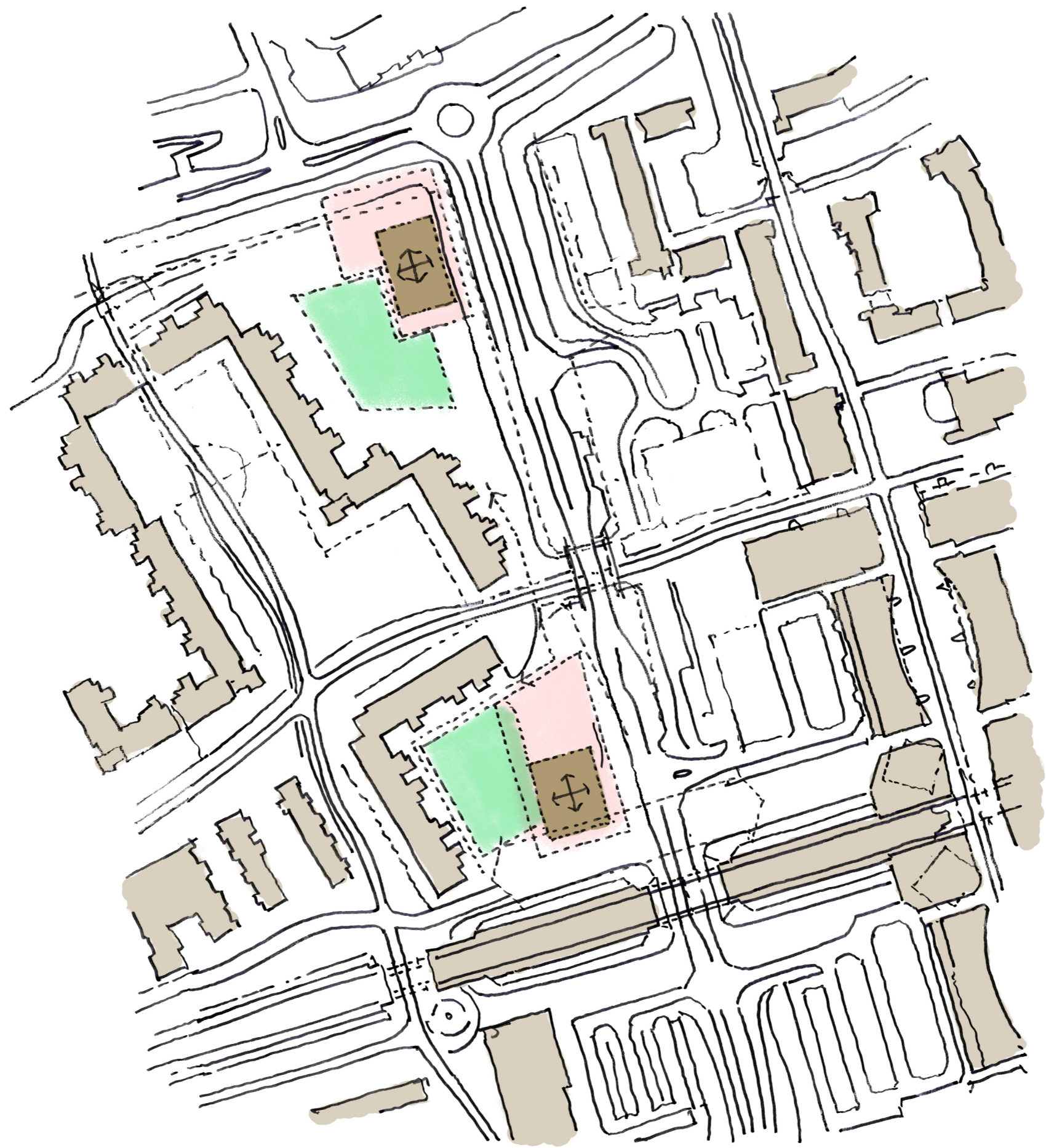
BLAF Architects
Woongebouw Sint-Niklaas, BE



CF Møller
Kajstaden Tall Timber building, SE

3. ontwerpstudies







schetssessie Rhenenhof

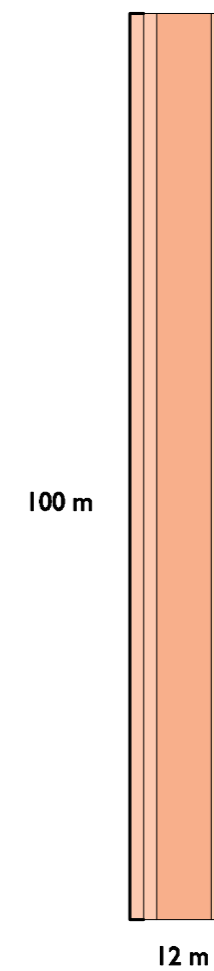
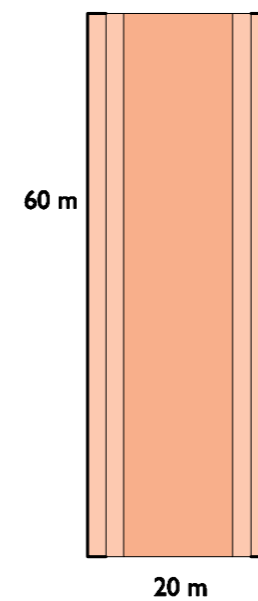
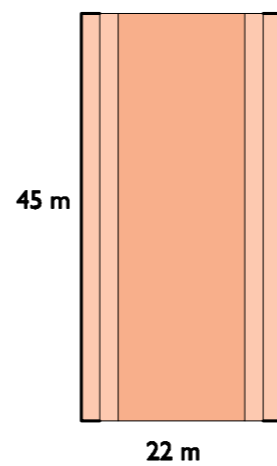
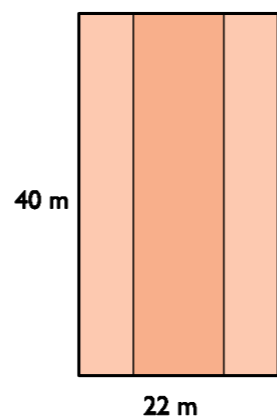
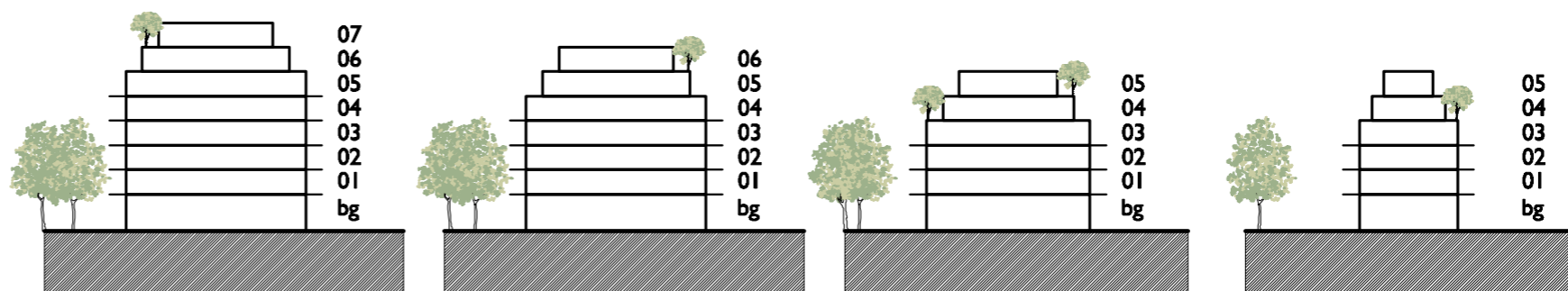


uitvraag - twee principes, twee modellen

eerste zoekopgave

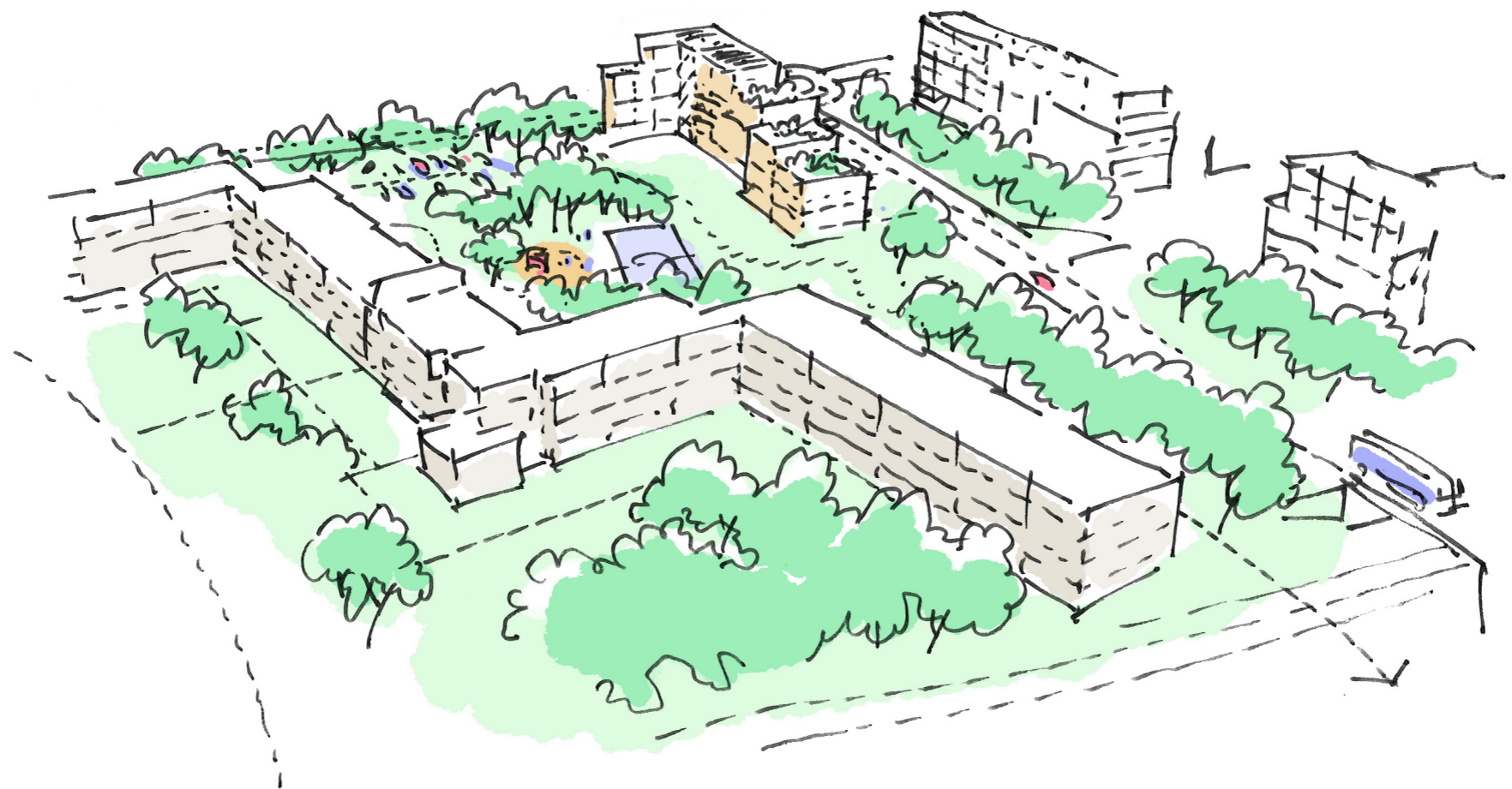
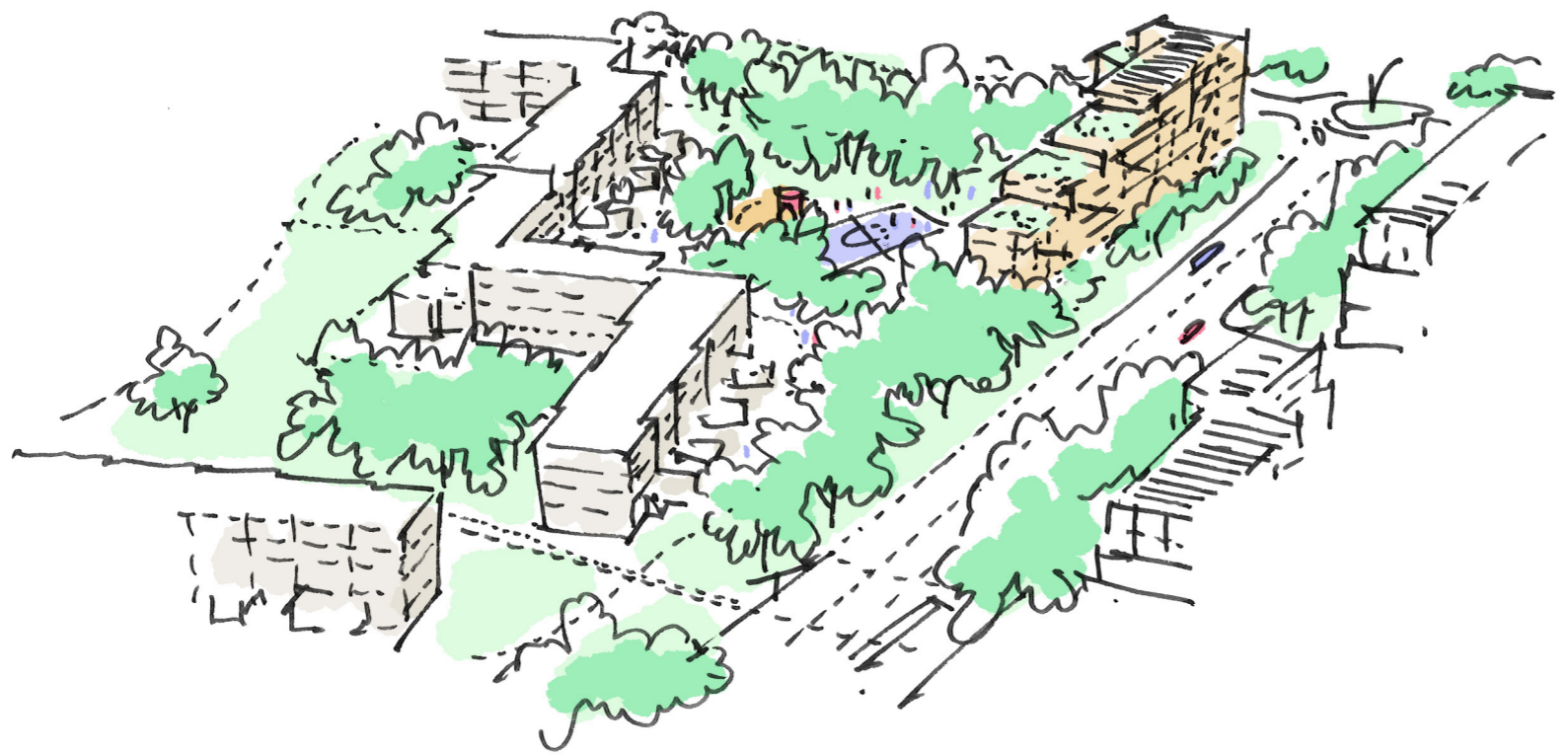
(senioren)
woningen
70 m² x 65
appartementen

-> volume van
6.000 m² -
6.500 m²





variant 01



variant 01



Reigersbosdreef



Meerkerkdreef

variant 01

Getrapte gevels, voortzetting groene hoven in bouwvolume

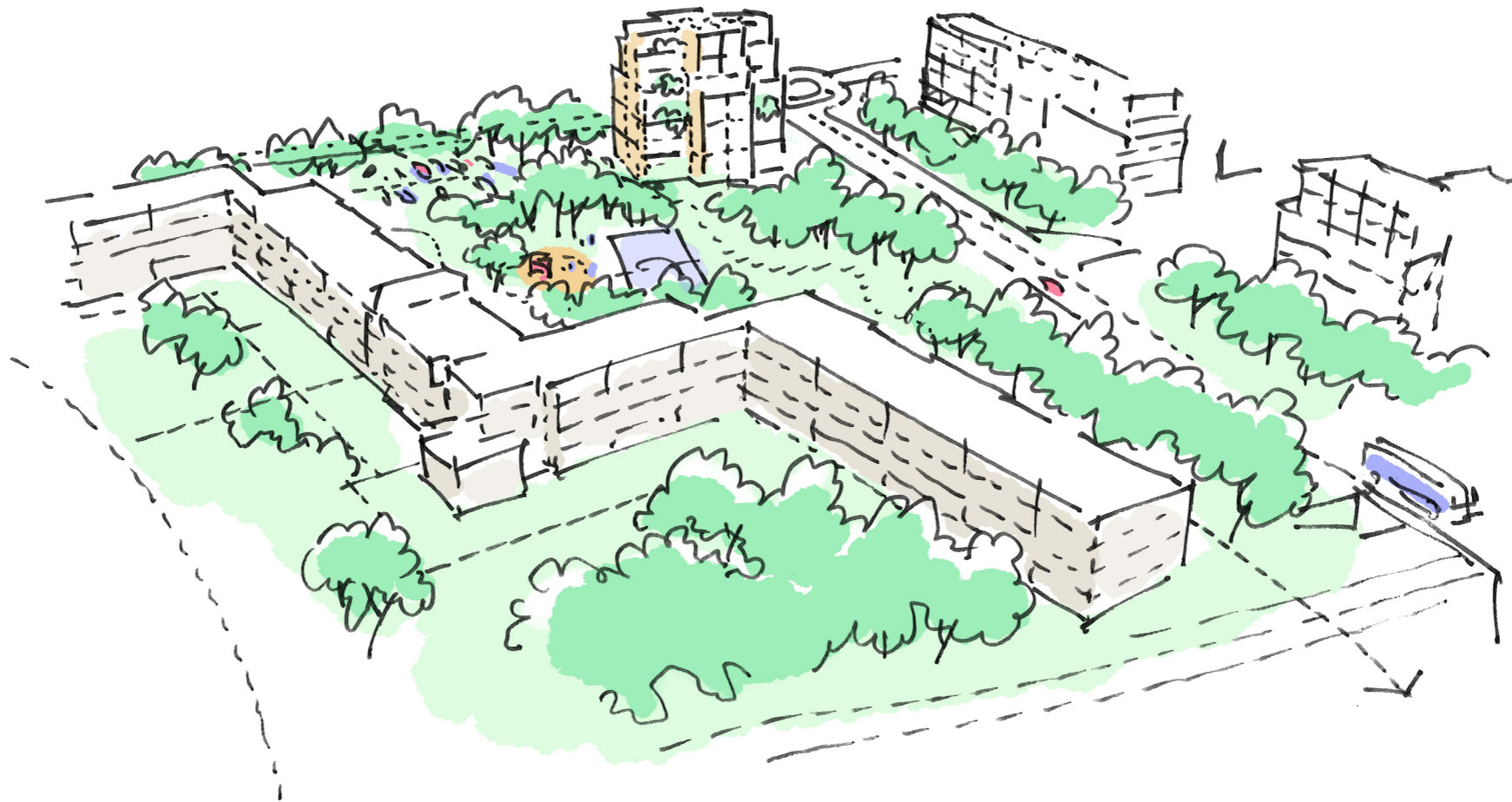
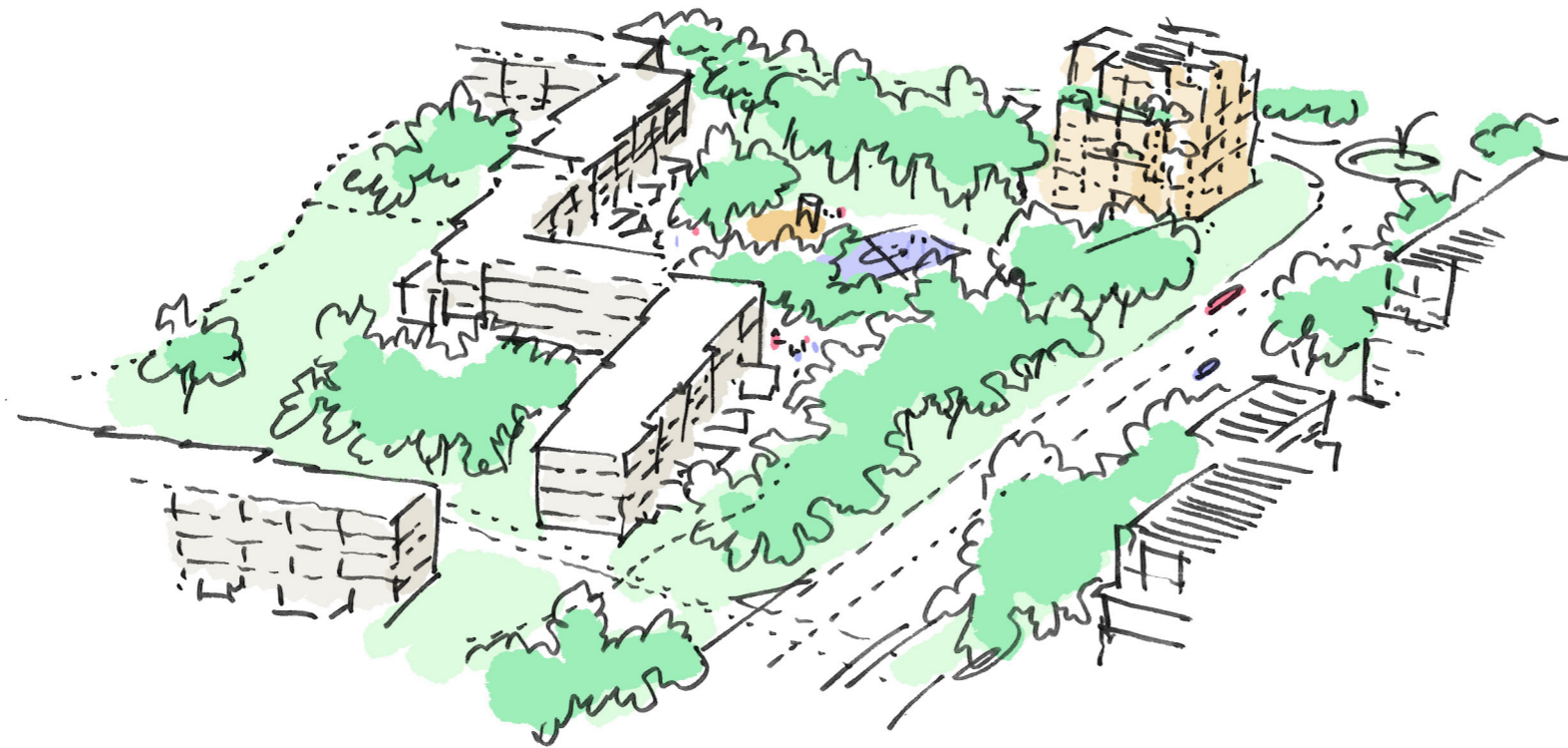
variant 01

40-50 woningen
ca. 5400 m² BVO





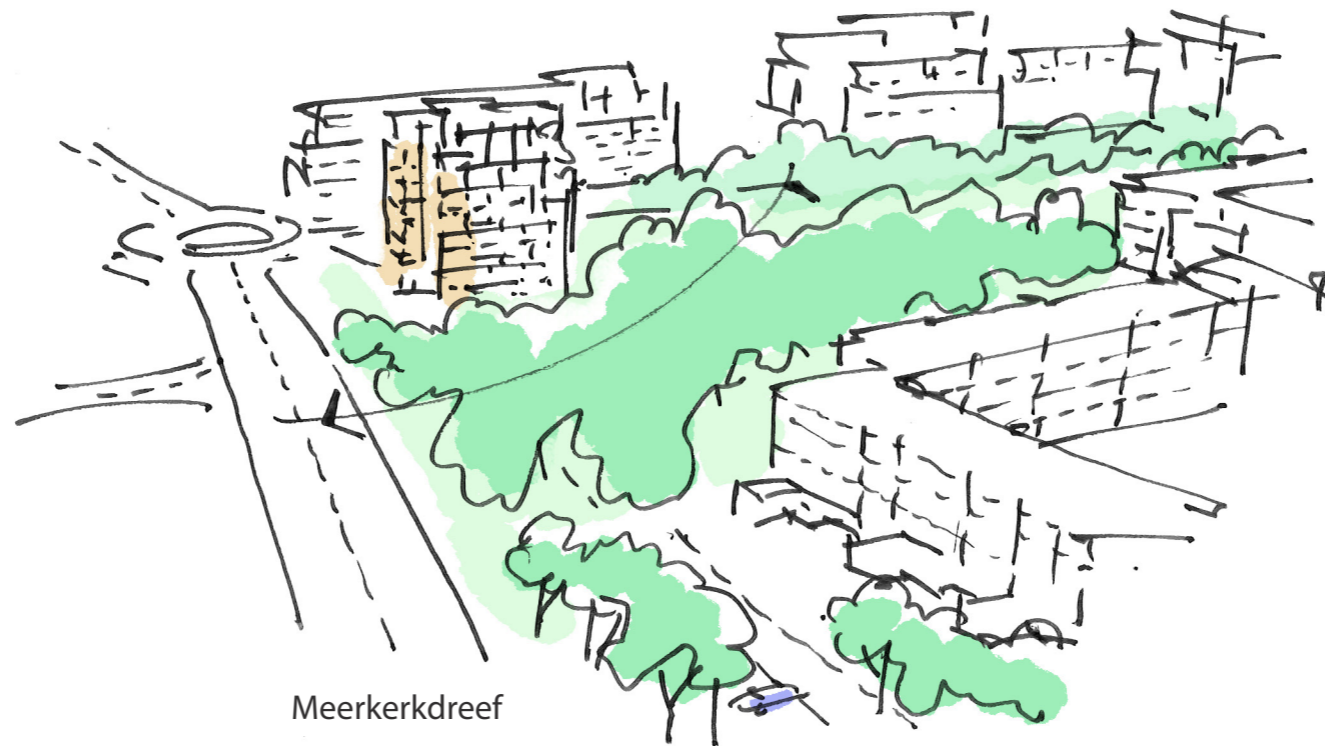
variant 02



variant 02



Meerkerkdreef



Meerkerkdreef

variant 02

Getrapte gevels, voortzetting groene hoven in bouwvolume

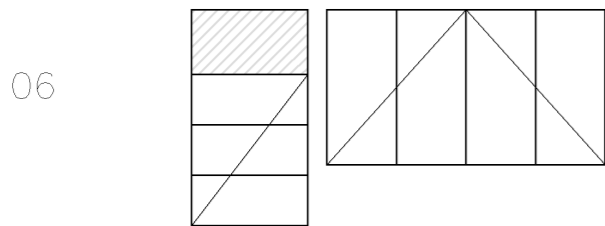
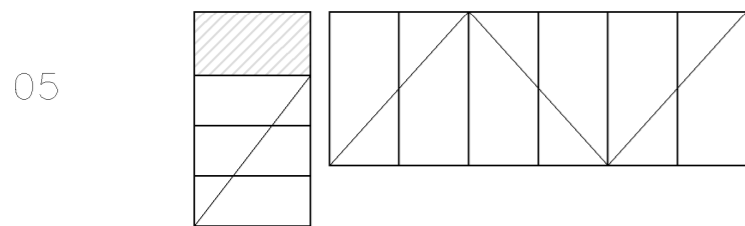
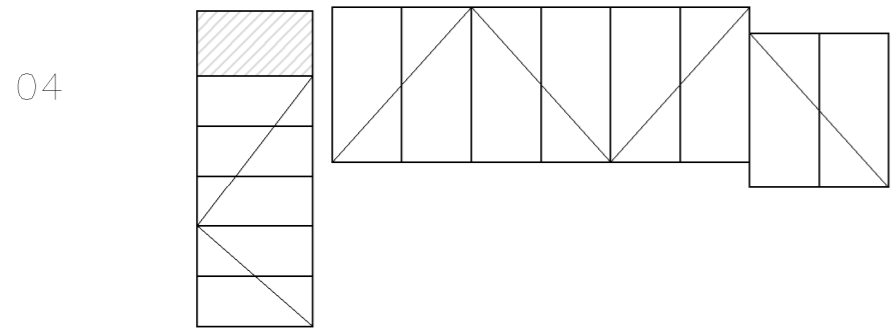
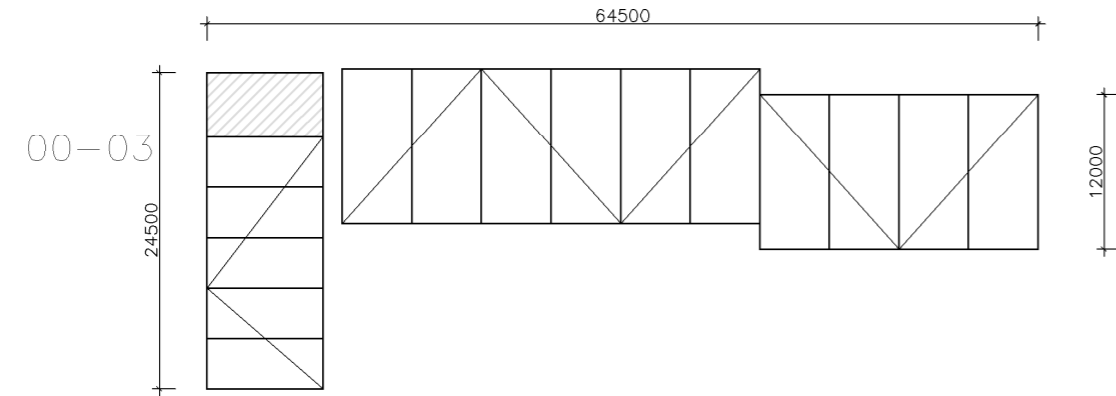
variant 02

40-50 woningen
ca. 5400 m² BVO



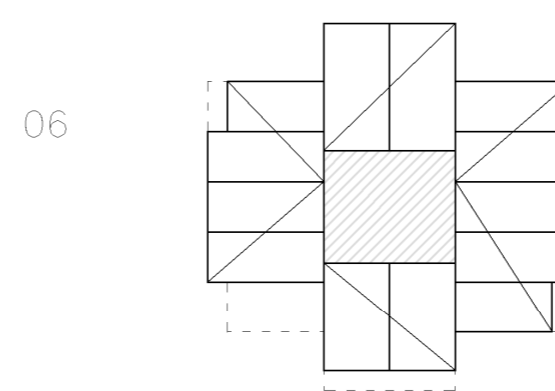
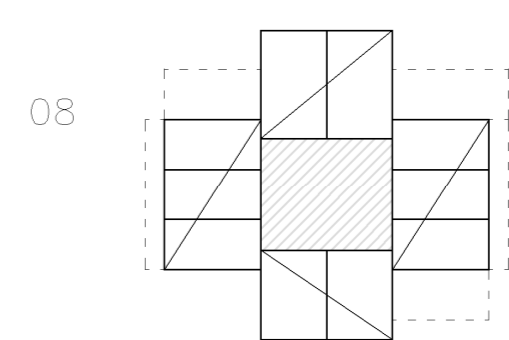
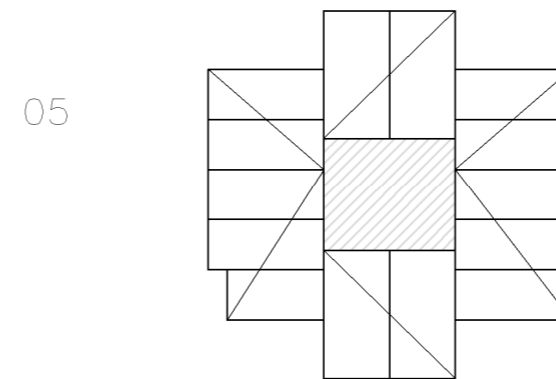
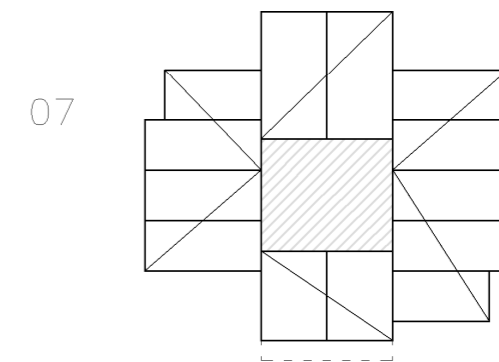
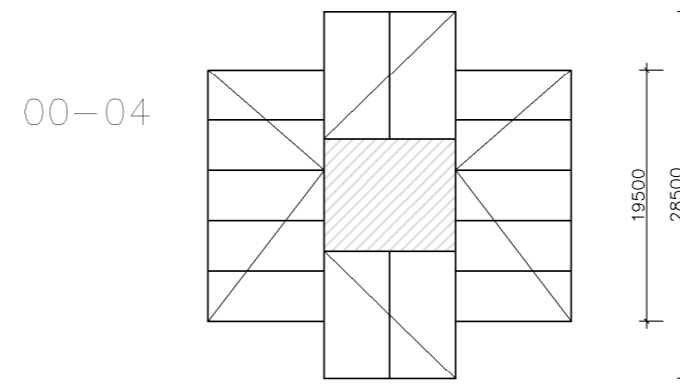
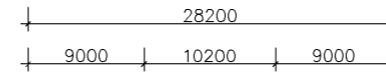
variant 01

40-50 woningen
ca. 5400 m² BVO



variant 02

40-50 woningen
ca. 5400 m² BVO





variant 01



variant 02