

B

STUDIO

L

U

T-05

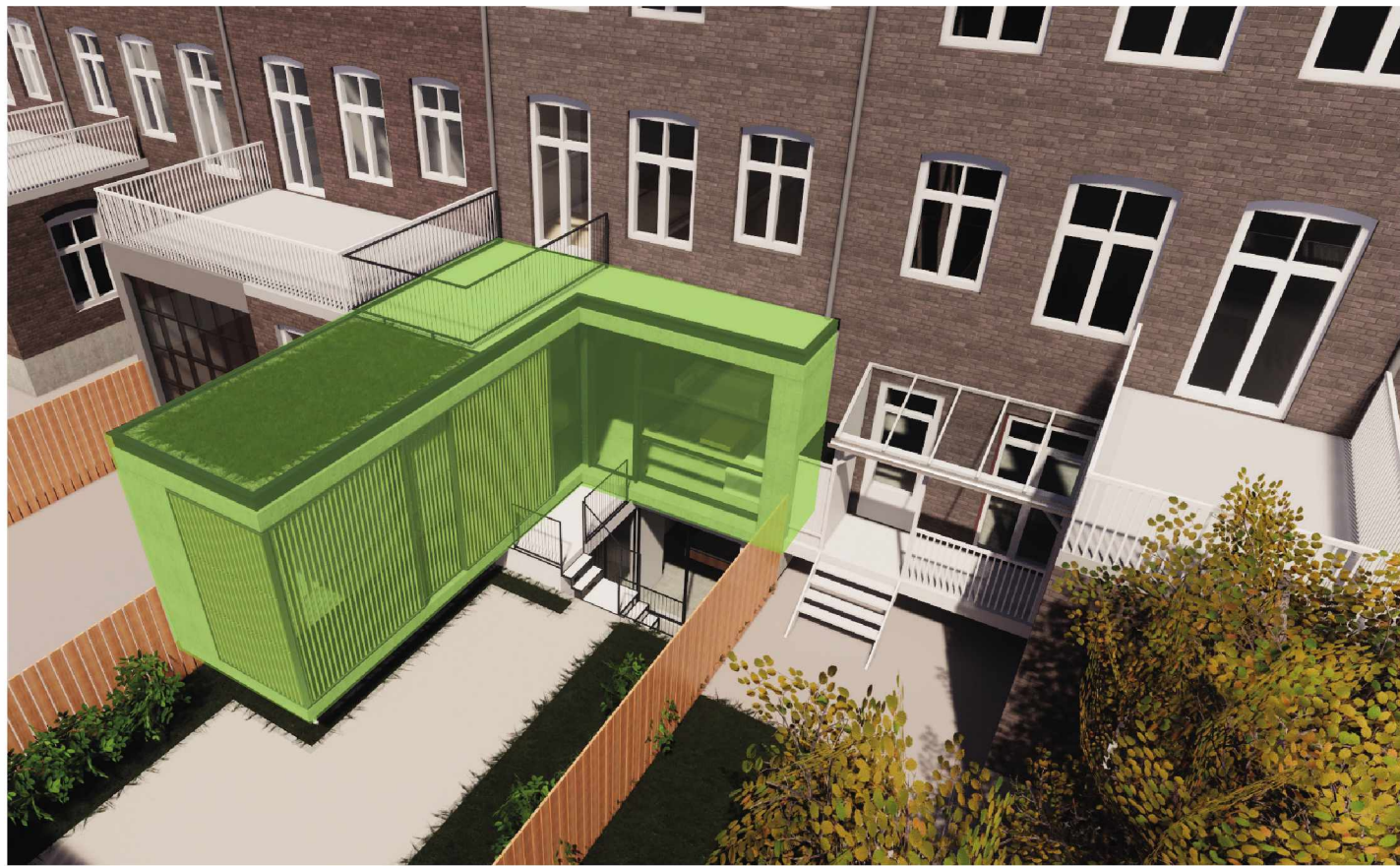
✘ Behoort bij beschikking met  
✘ Olo-nummer 3739553  
✘ d.d. 1 februari 2019

# E.H.107

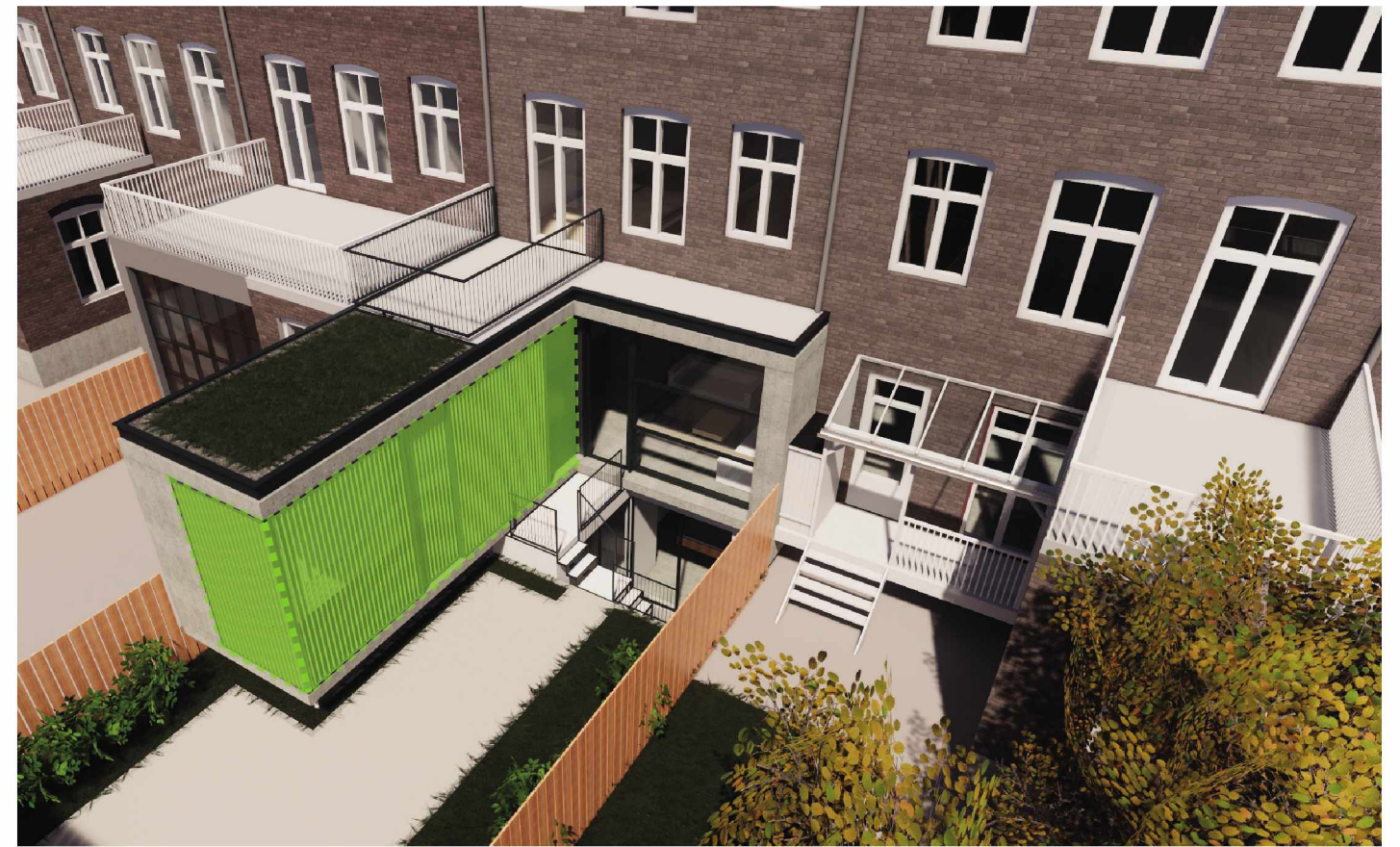
Eerste Helmerstraat 107  
Design proposal  
November 2018



SITE: EERSTE HELMERSSTRAAT 107



Uniform volume and materials



Reduced glazing to avoid overlooking

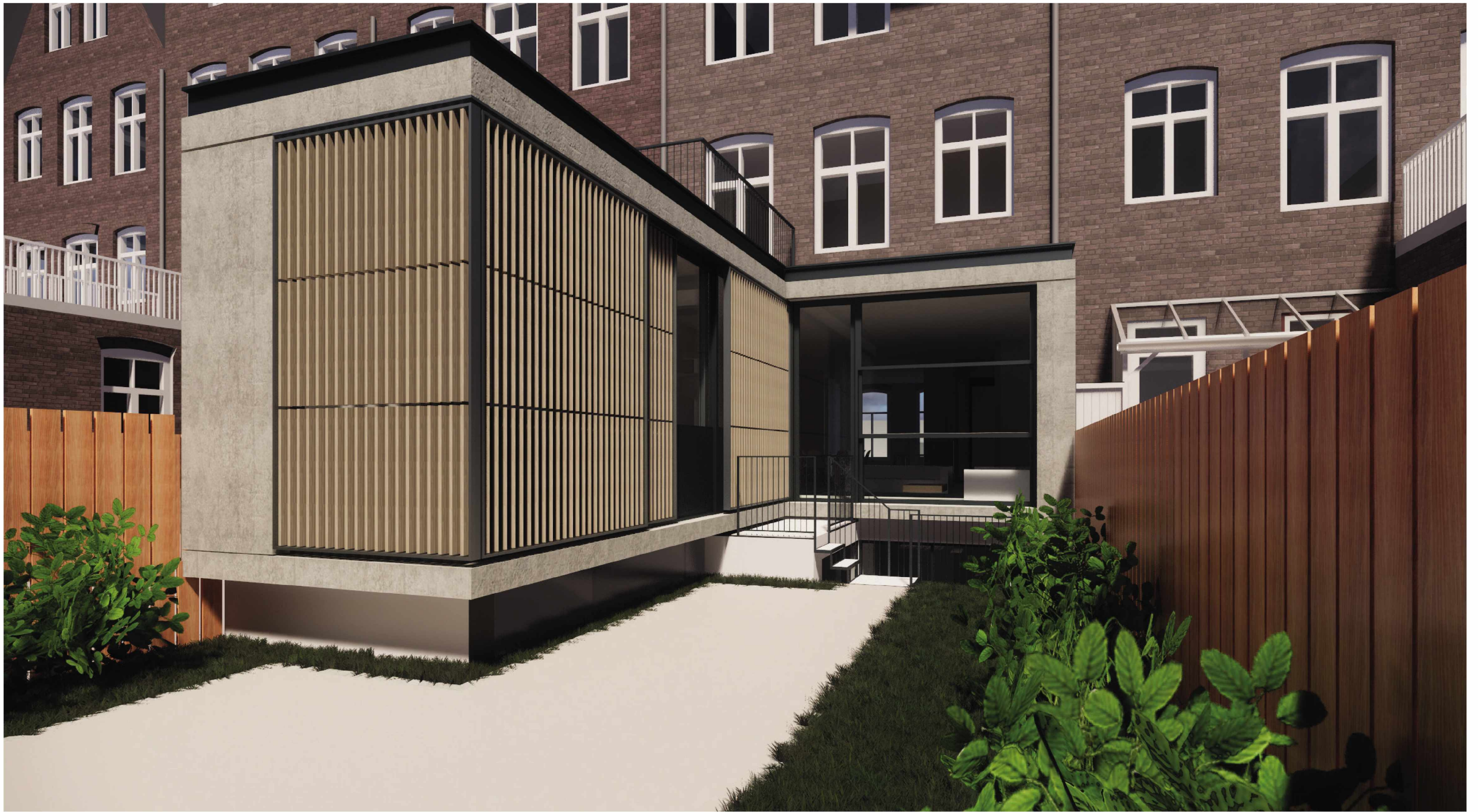


Reduction in volume and additional green roof



Previous proposal

DESIGN IMPROVEMENTS



Current Proposal

VIEW FROM THE GARDEN

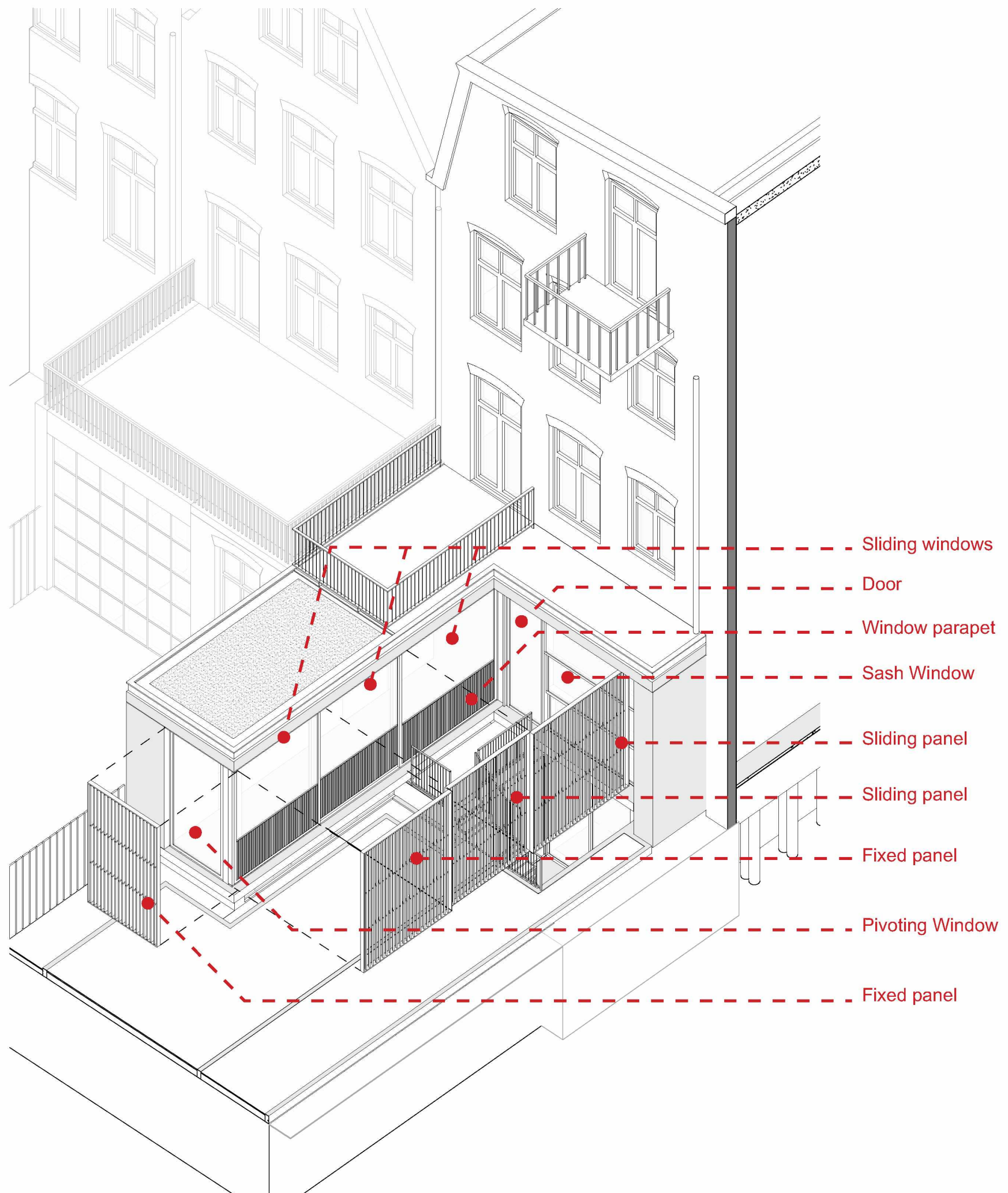


Current Proposal

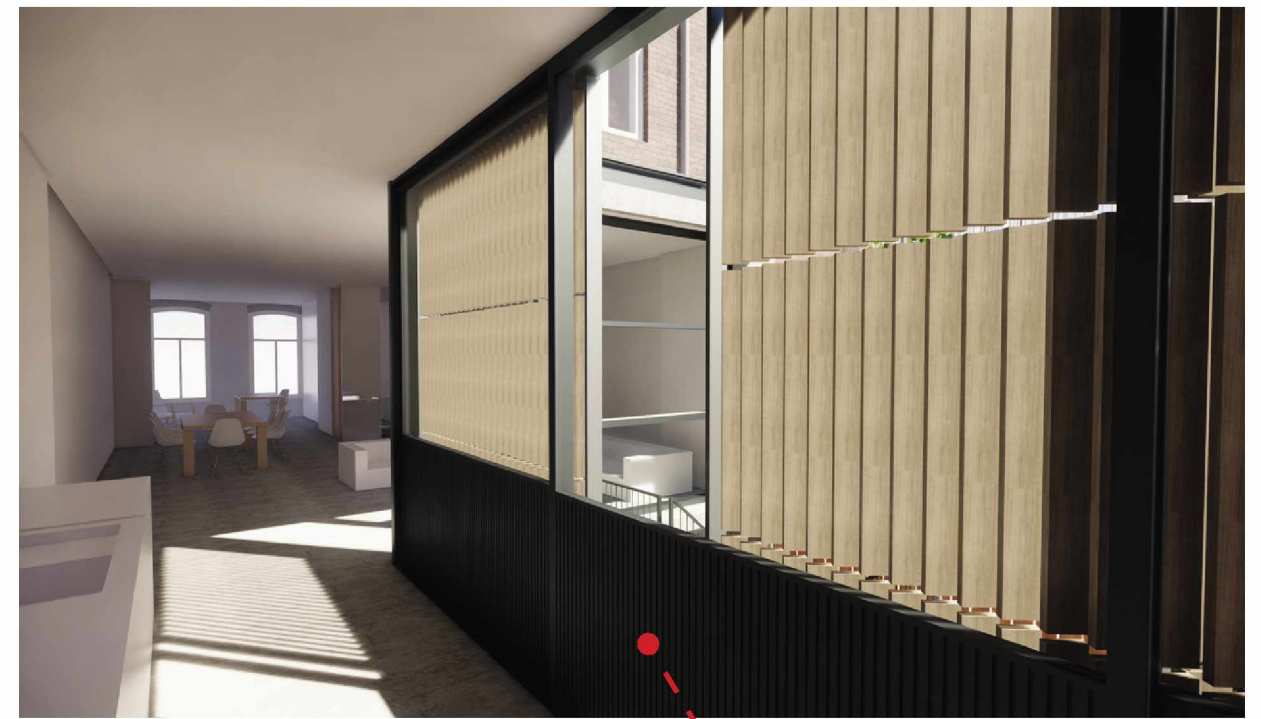
AERIAL VIEW

# Addressing Overlooking

- Vertical timber blades block the view out whilst letting the light in
- A parapet integrated into the window system contributes to the privacy



- - - - - Solid panel at bottom



- - - - - Solid panel at bottom

# FACADE SYSTEMS



Position 1 - Panels closed



Position 2 - Central panel open

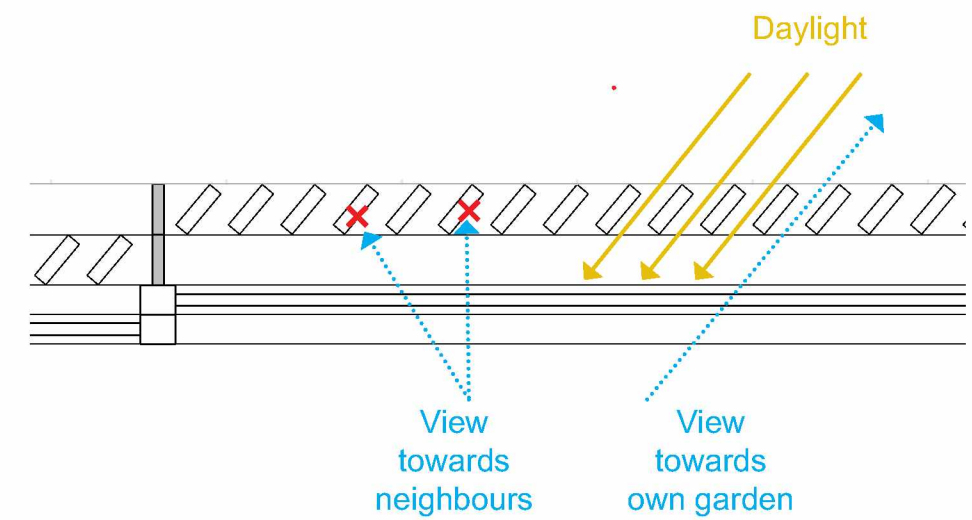
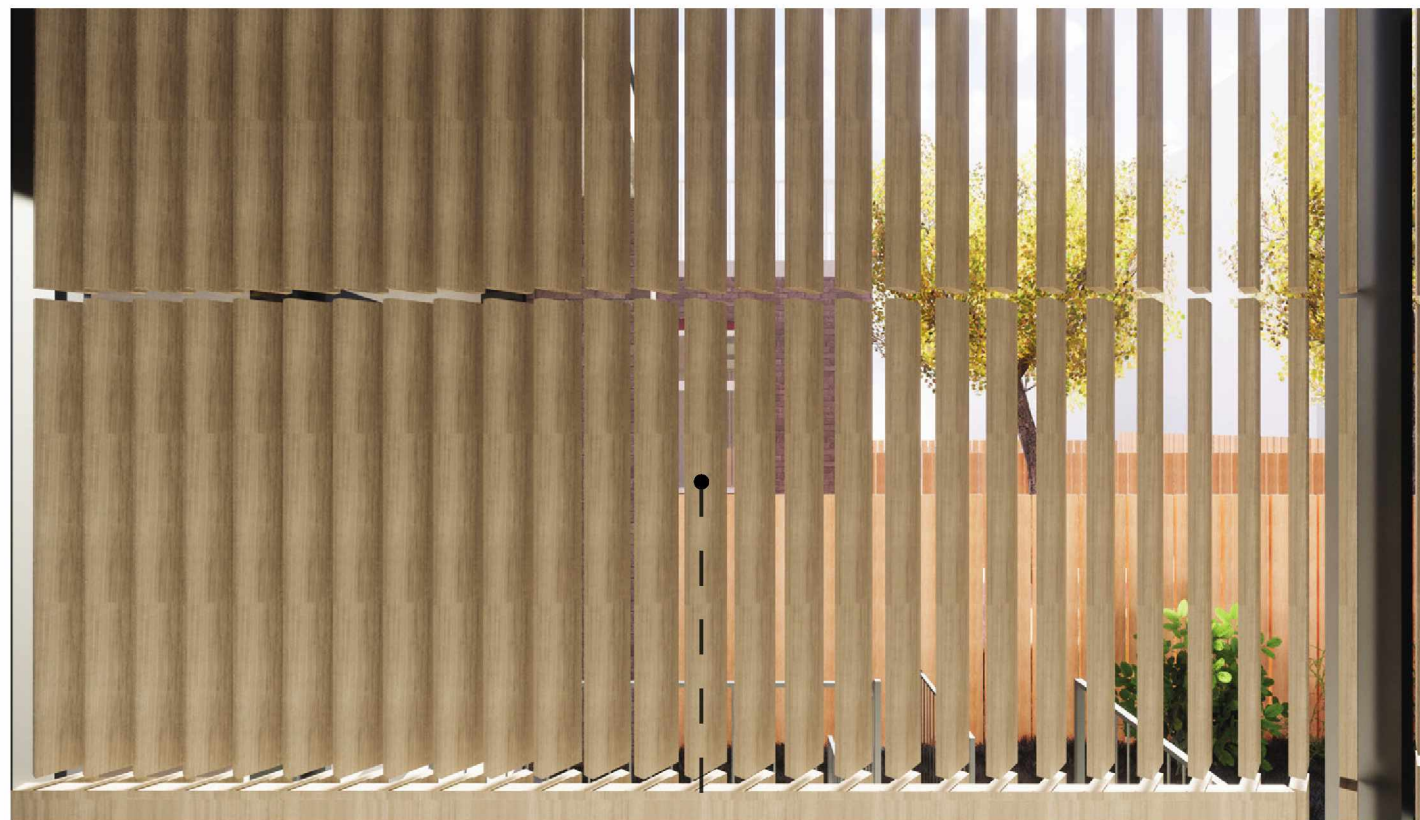
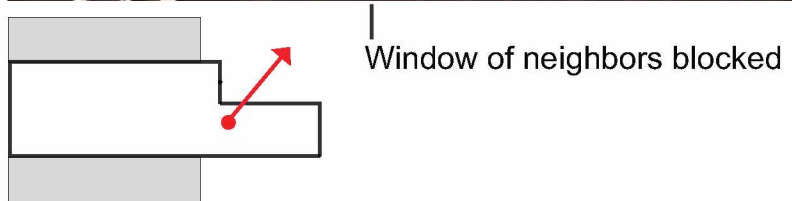
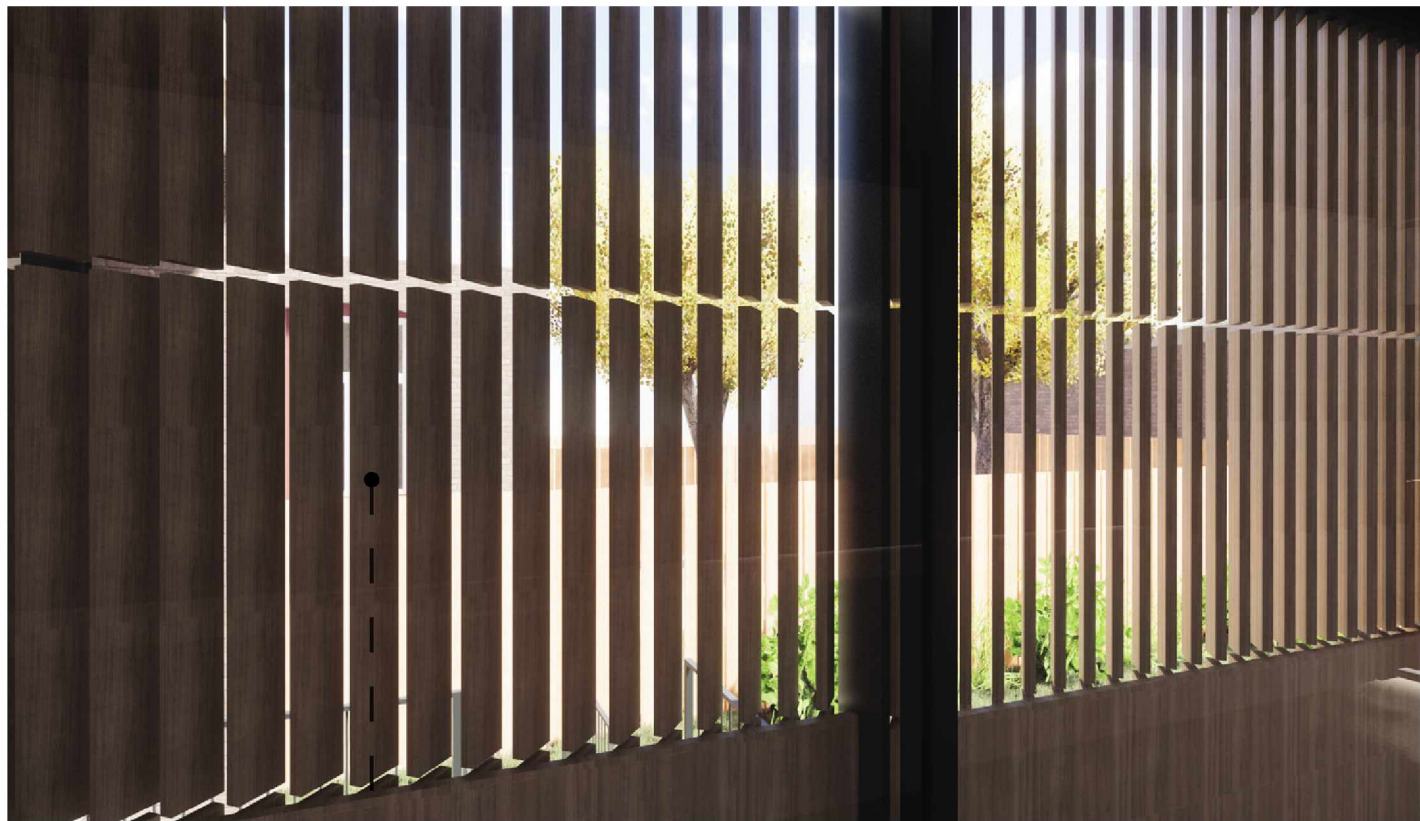


Position 3 - Right panel open



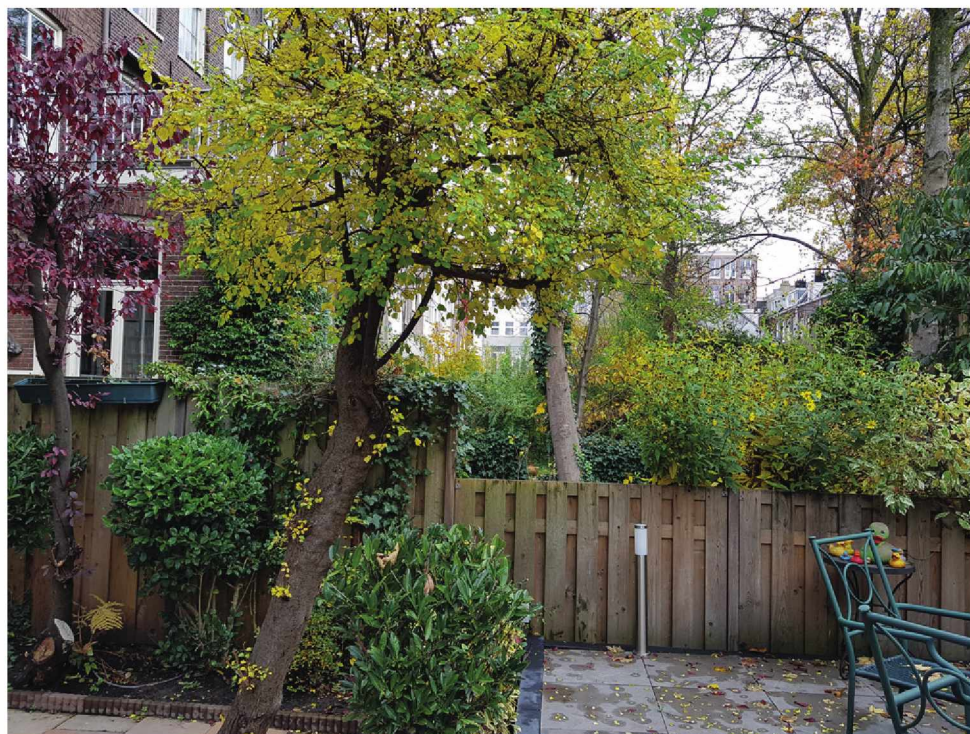
Position 3 - Sliding door open to the garden

## SLIDING PANELS CONFIGURATIONS



The timber louvers orientation is studied to allow the daylight in while at the same time blocking the view out towards the neighbours.

## TIMBER LOUVERS



Existing and newly planted trees will contribute to avoid overlooking between the adjoining properties.

VEGETATION

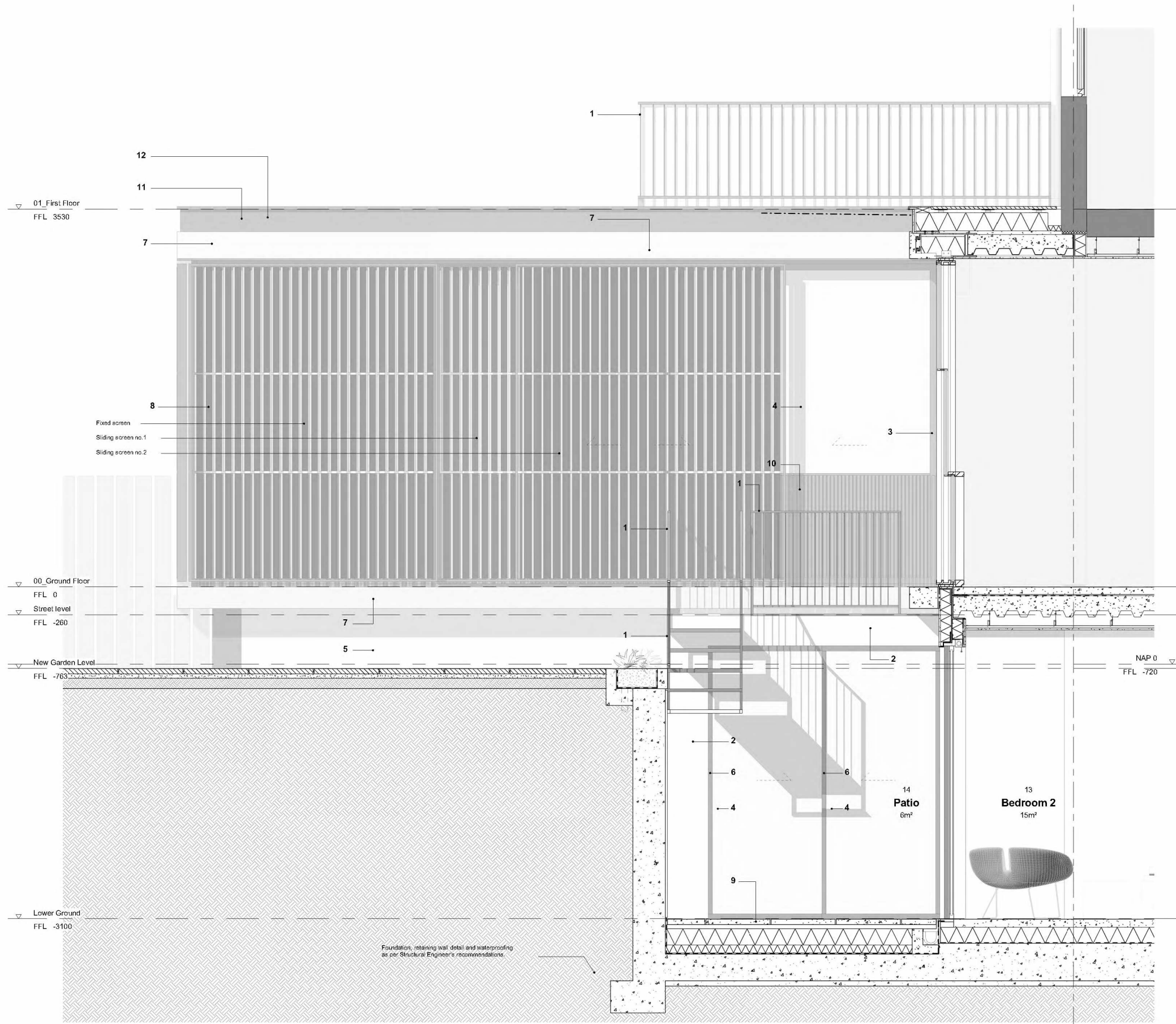




REAR ELEVATION  
KEY

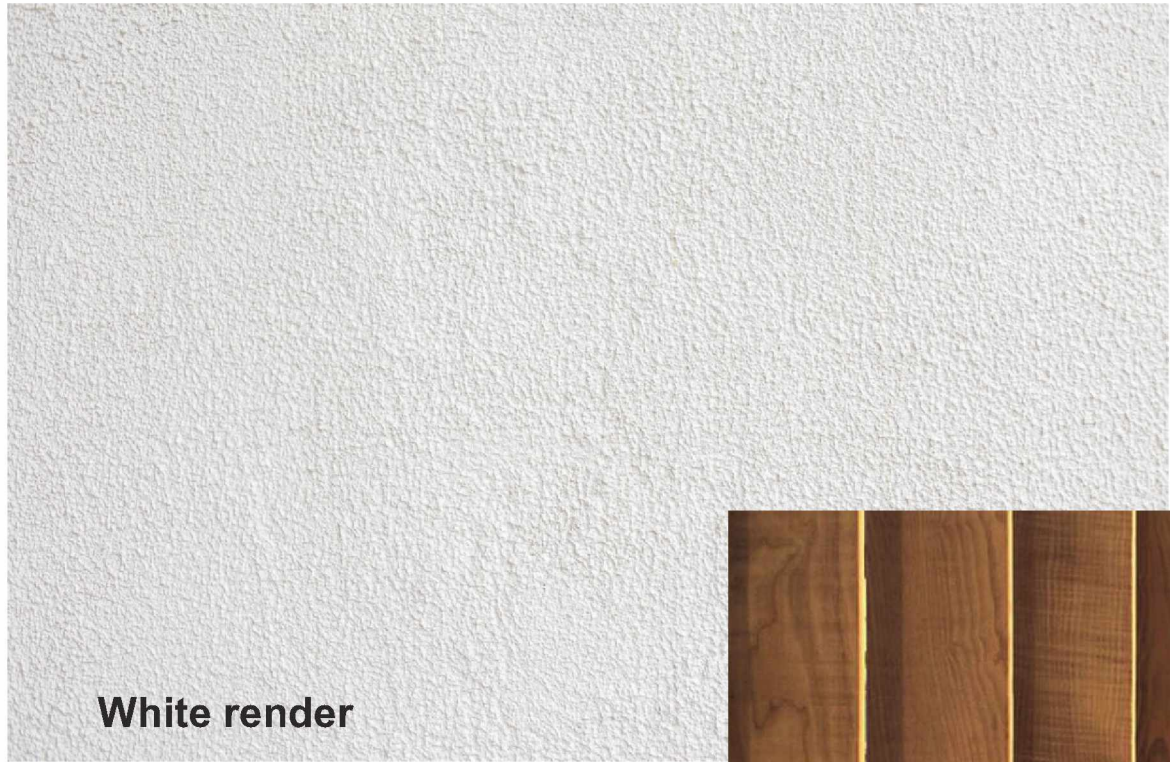
- 1 Powder coated black painted metal balustrade
- 2 White render finish
- 3 Metal window frame
- 4 Laminated glass
- 5 Frosted glass
- 6 Powder coated black painted steel frame
- 7 Visual concrete finish
- 8 Timber brise soleil
- 9 Stone / concrete paving
- 10 Window system integrated metal parapet
- 11 Powder coated black painted metal profile
- 12 Green roof

Rear Elevation  
-Materials

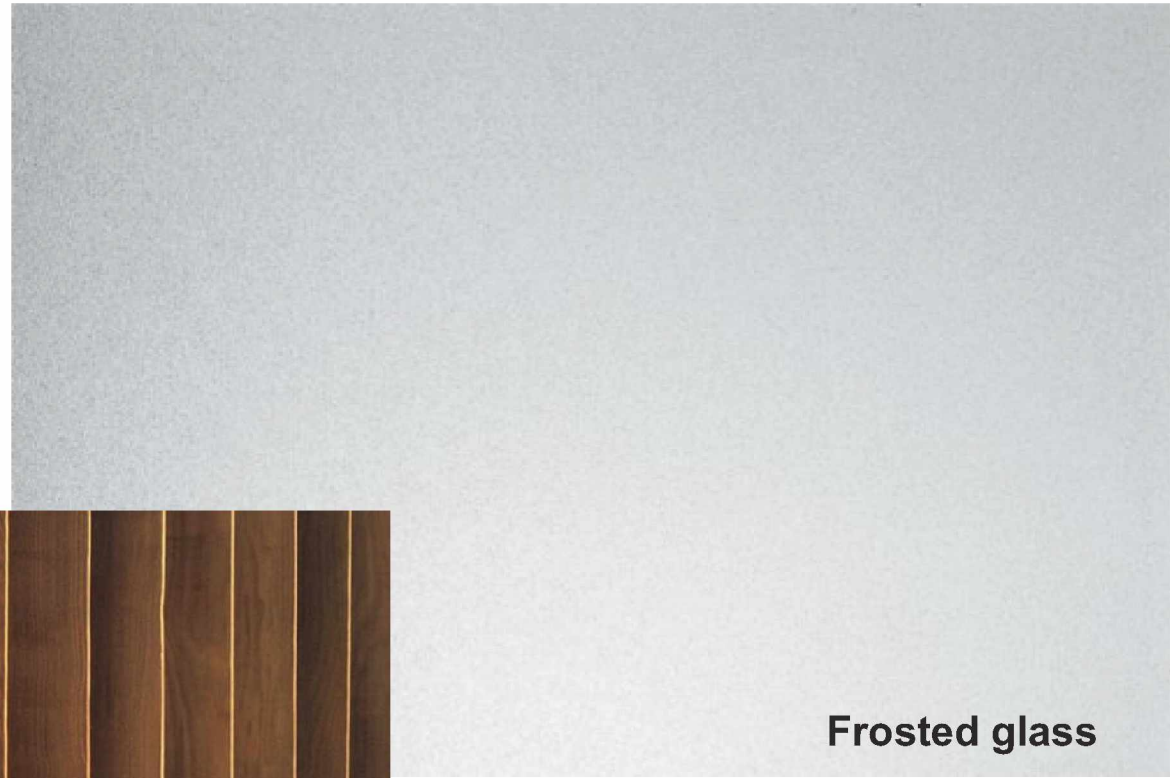


- EAST ELEVATION  
KEY
- 1 Powder coated black painted metal balustrade
  - 2 White render finish
  - 3 Metal window frame
  - 4 Laminated glass
  - 5 Frosted glass
  - 6 Powder coated black painted steel frame
  - 7 Visual concrete finish
  - 8 Timber brise soleil
  - 9 Stone / concrete paving
  - 10 Window system integrated metal parapet
  - 11 Powder coated black painted metal profile
  - 12 Green roof

East Elevation  
-Materials



**White render**



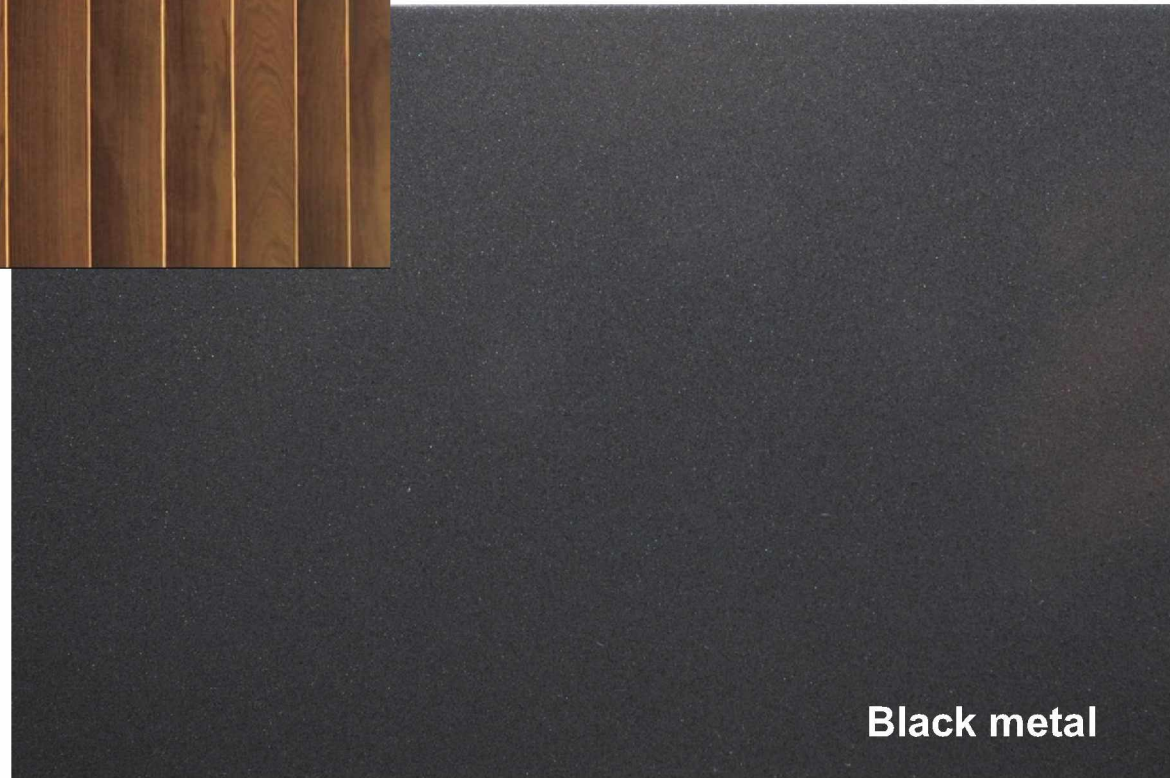
**Frosted glass**



**Timber Louvers**

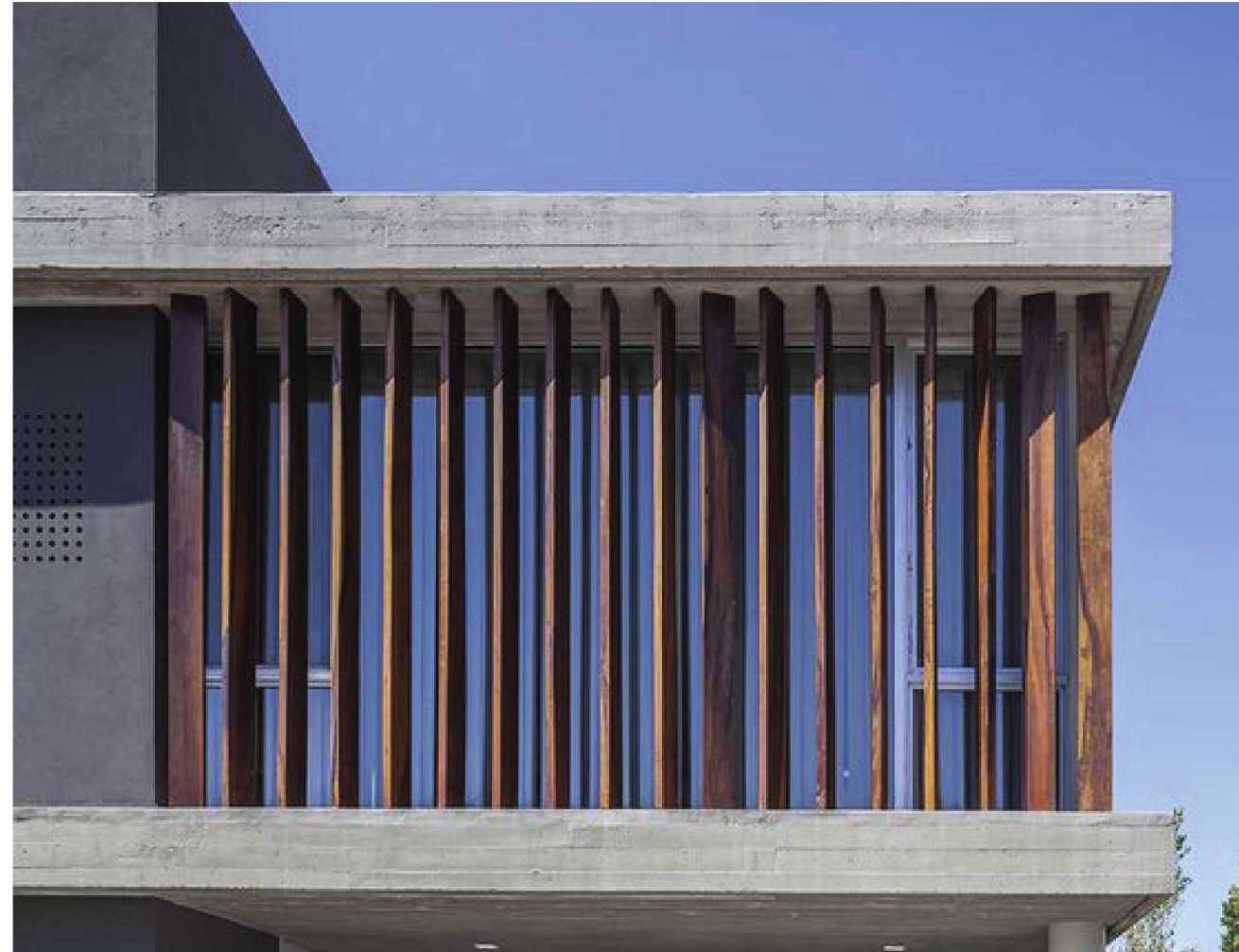
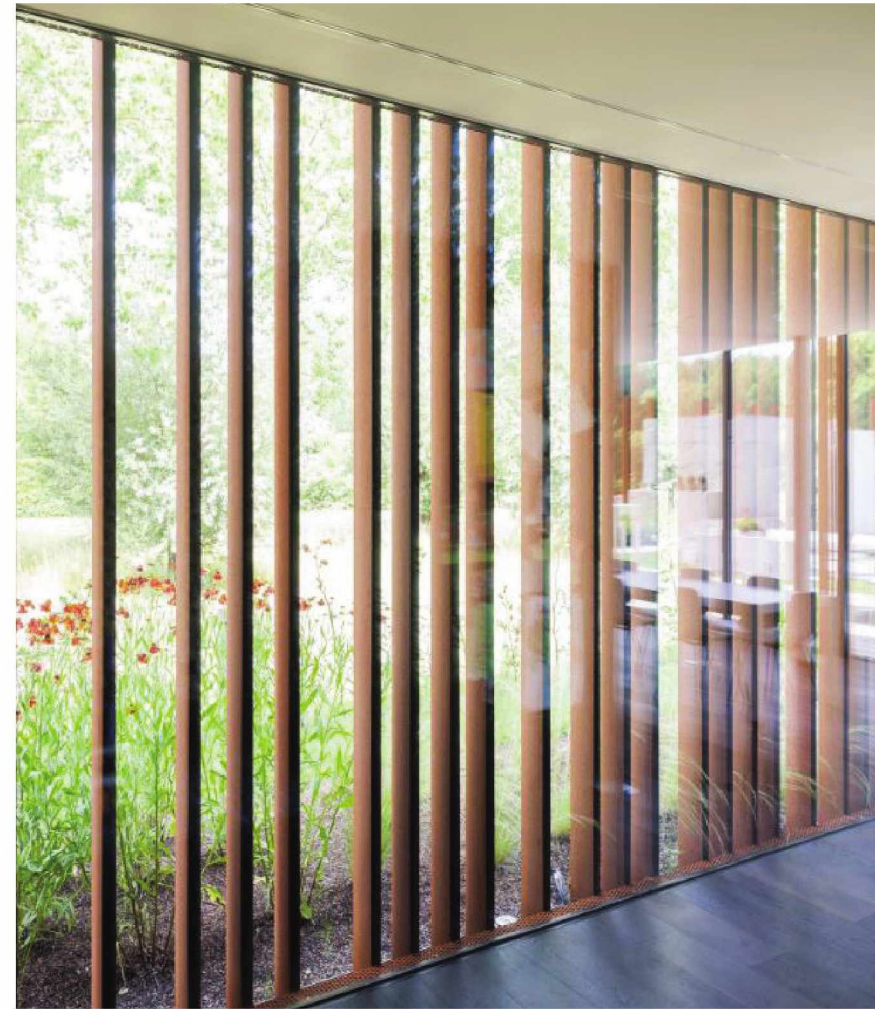
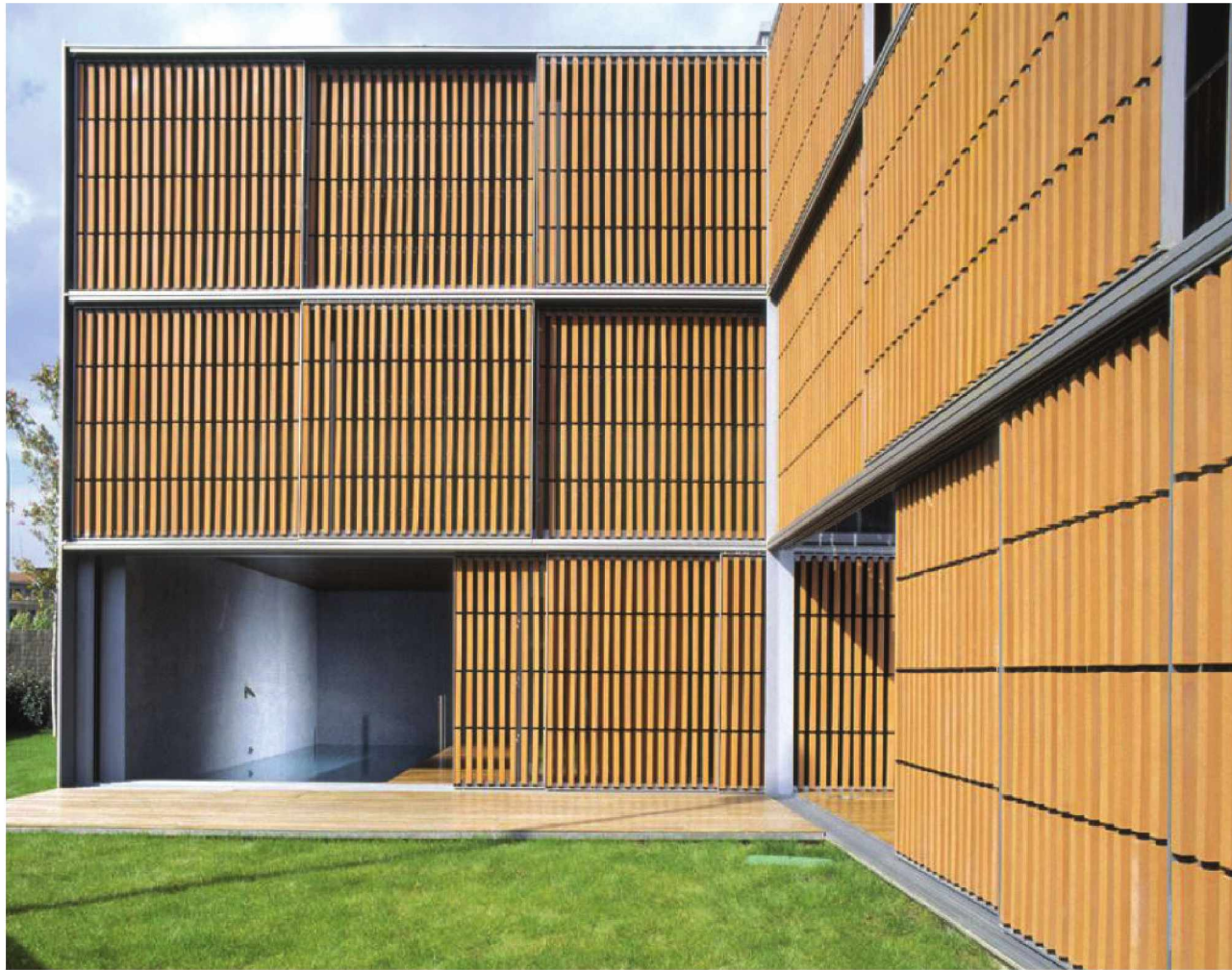


**Concrete**

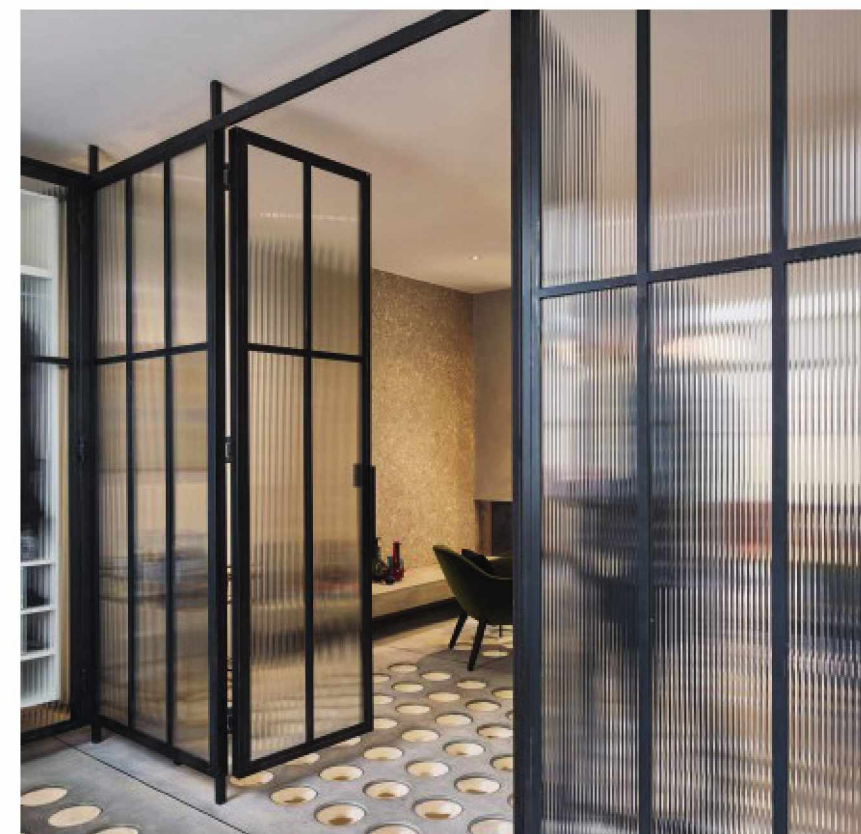
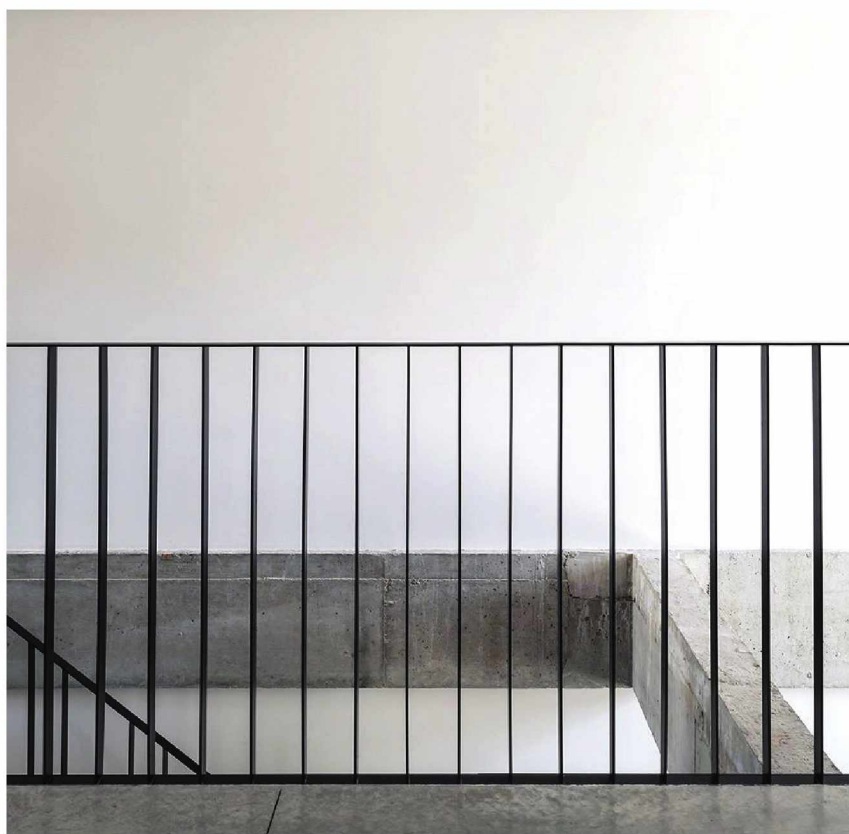
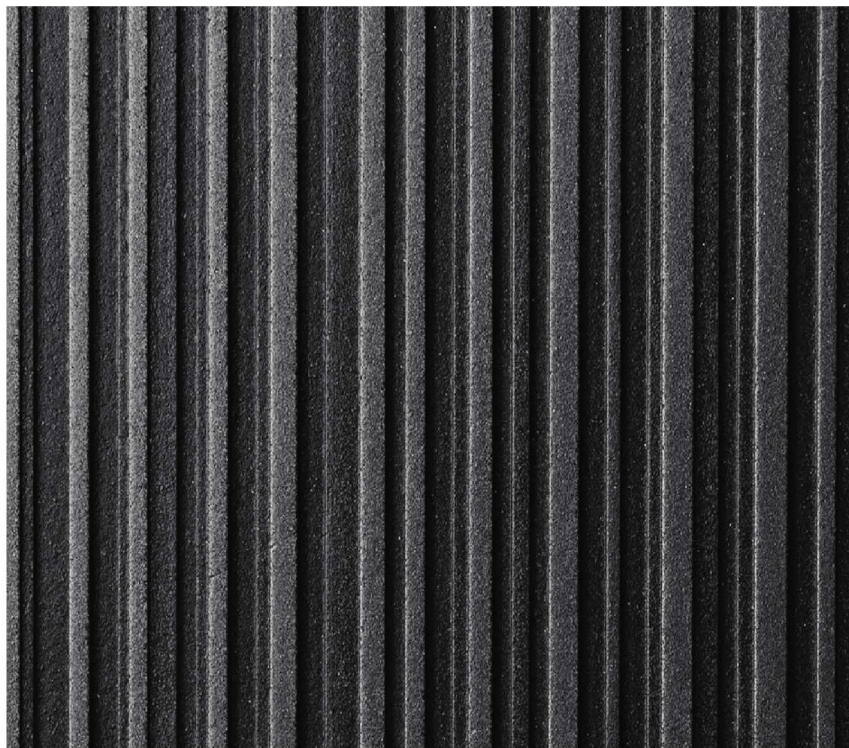
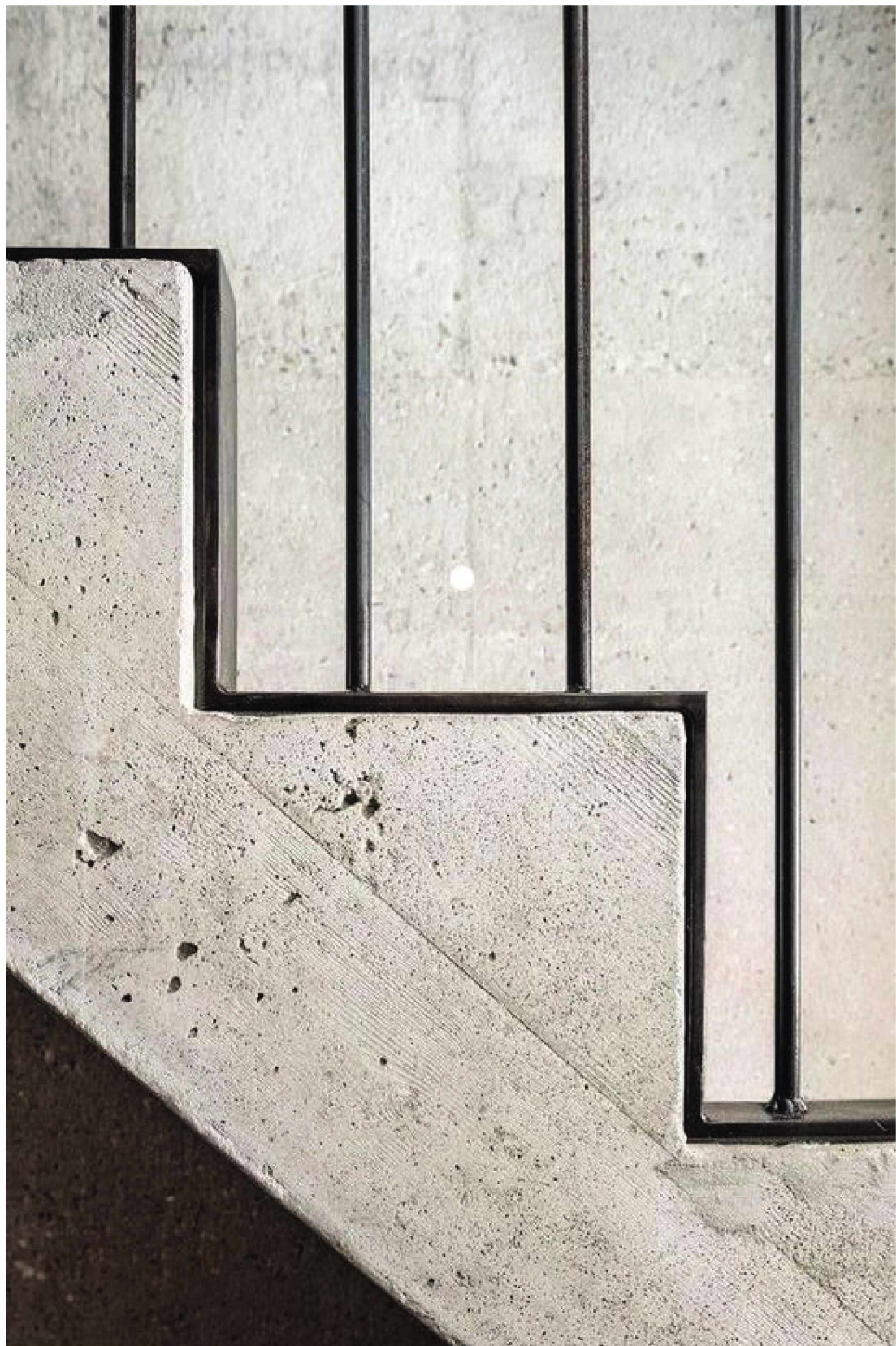


**Black metal**

**MATERIAL PALETTE**

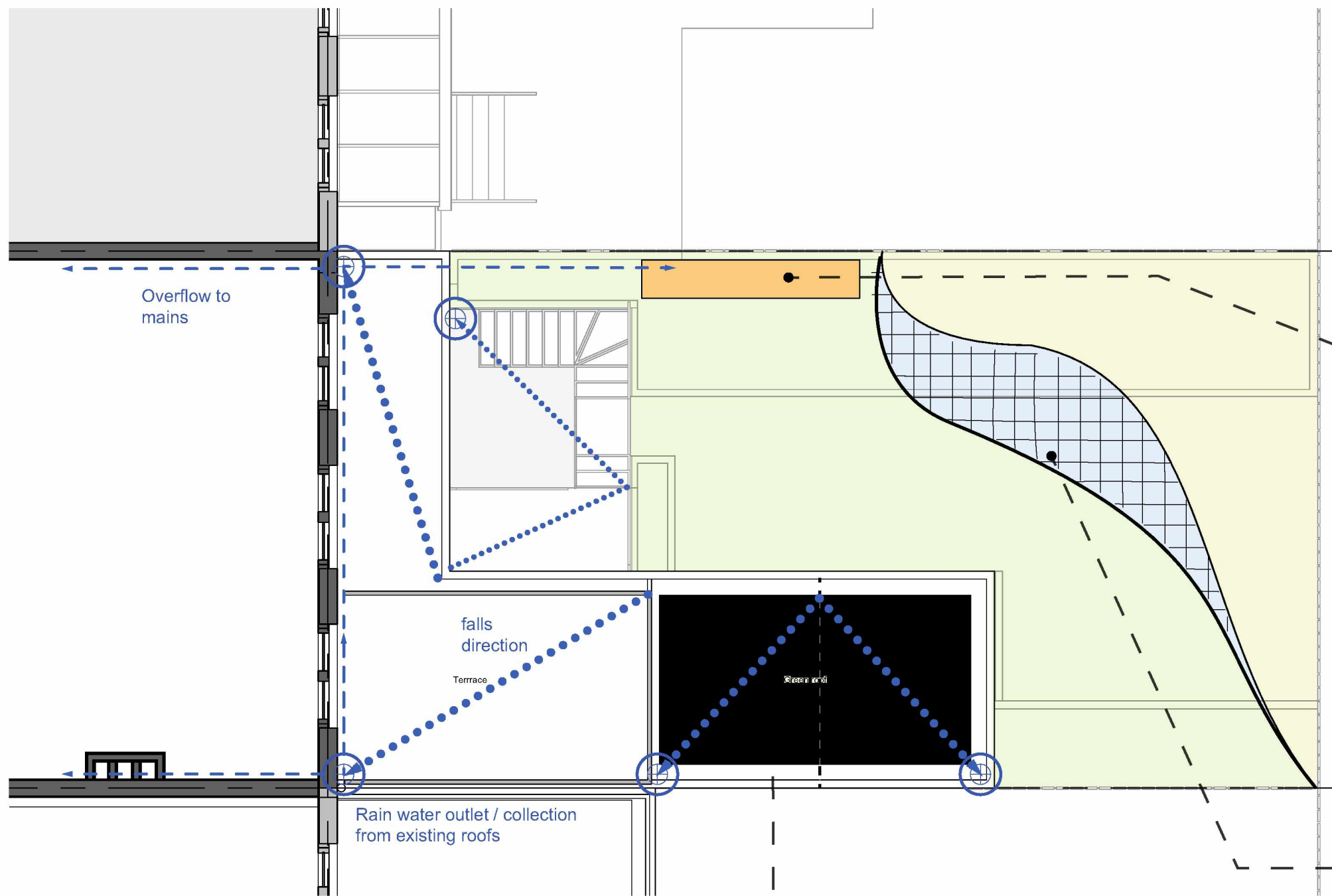


Material references  
-Timber Louvers

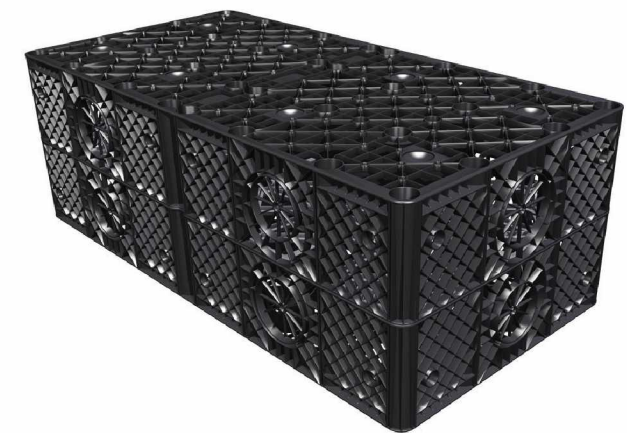


**Material references**  
Concrete and black metalwork

Water management



Rain barrel in the form of a wooden bench



Infiltration crates installed in the garden below ground

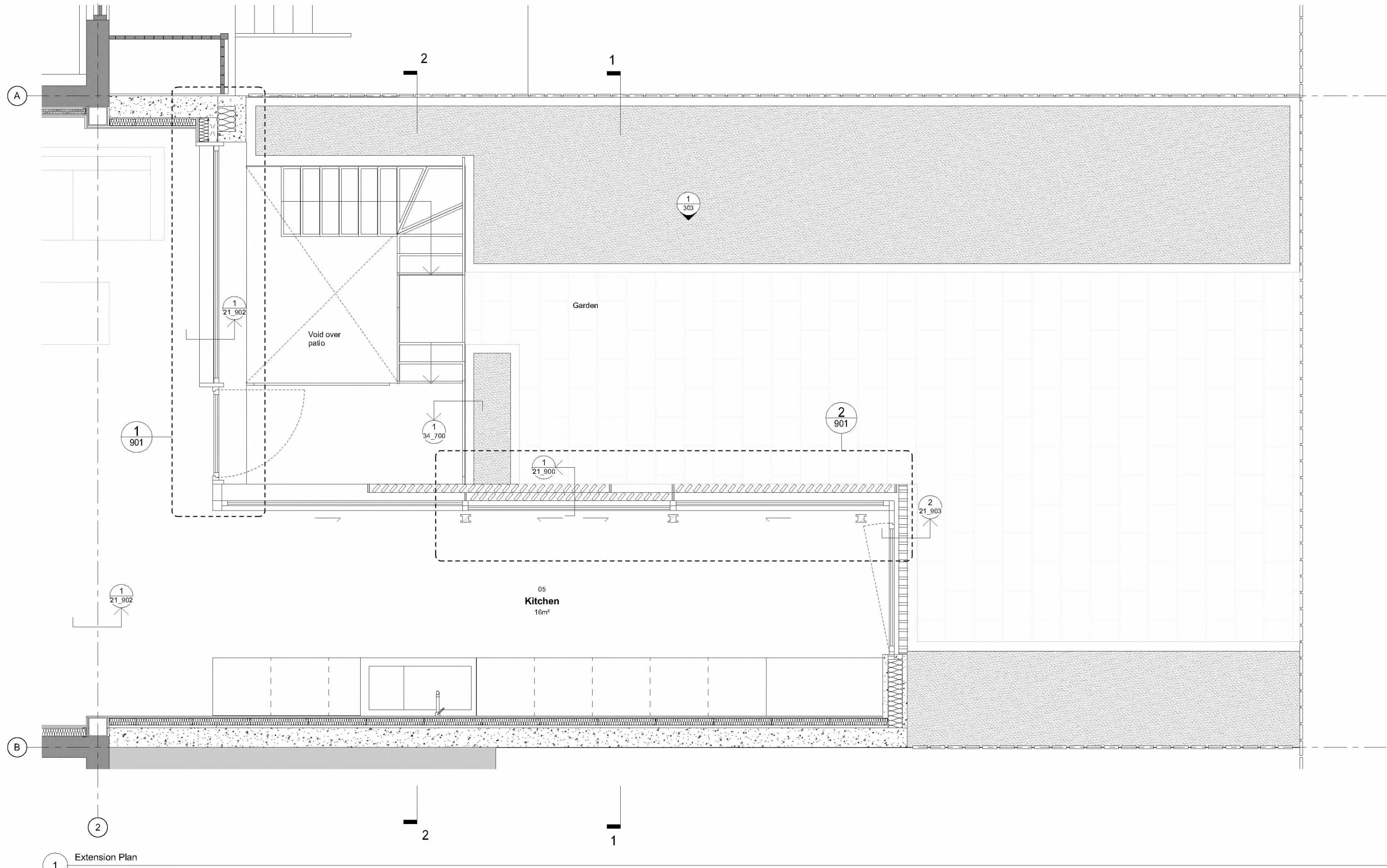
First floor plan  
Water collection from the roof

L - Green roof



## WATER MANAGEMENT MEASURES





1 Extension Plan  
1 : 20

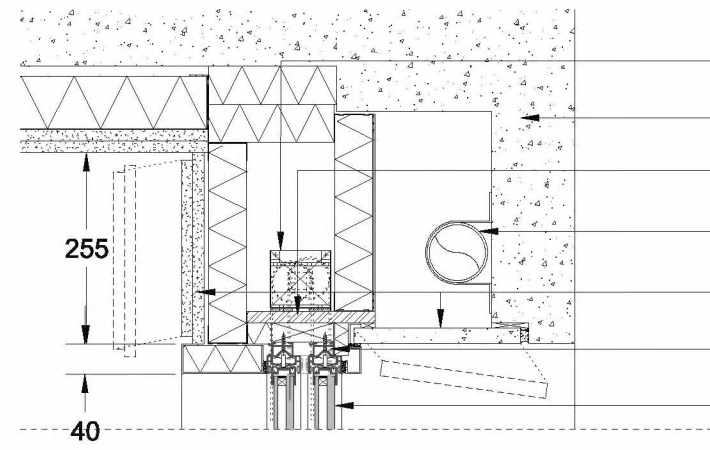
Do not scale from the drawing. Use figured dimensions only. Figured dimensions are in millimetres. All levels are in metres. All dimensions and levels shall be verified on site before proceeding with works. The Architect shall be notified of any discrepancy. The Architect is not responsible for any errors caused by the transmission, translation, software or computer systems. The Architect is not responsible for, nor shall be liable for, the consequences of any use made of the drawings or models, other than that for which they were produced for the Client.

REV	DATE	DESCRIPTION	CHK
P1	20.08.2018	For Information	
P2	25.11.2018	For Information	

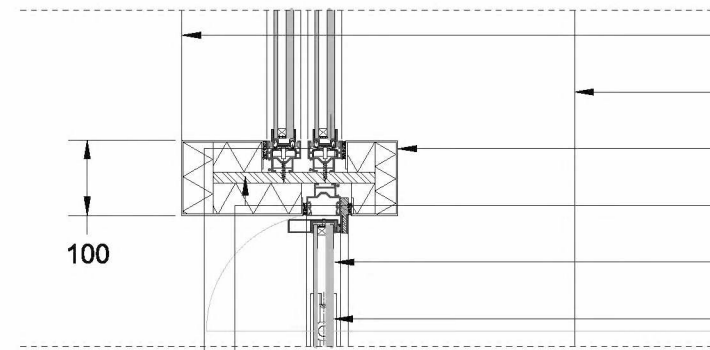
**BLU studio**  
63 Cornagh Rd  
London W14 9JT  
0044 246593558  
office@blustudio.uk  
telephone  
mail

**JOB NO: 100**

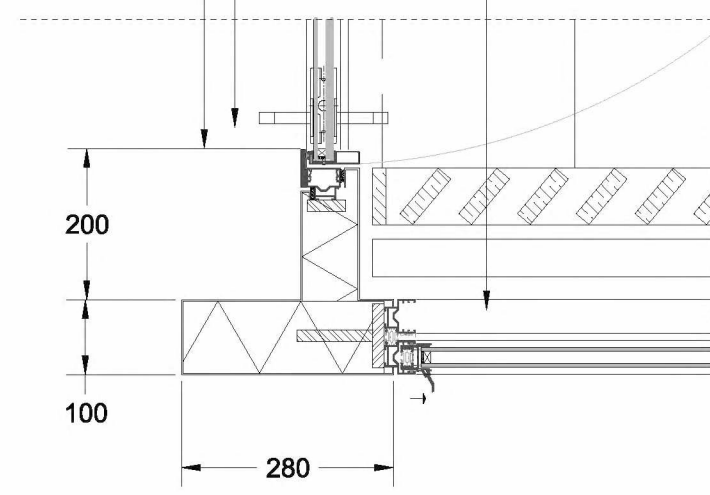
Eerste Helmersstraat 107 :  
**GARDEN EXTENSION PLAN**  
**GENERAL ARRANGEMENT**  
100\_06\_400  
SCALE 1 : 20 @A1



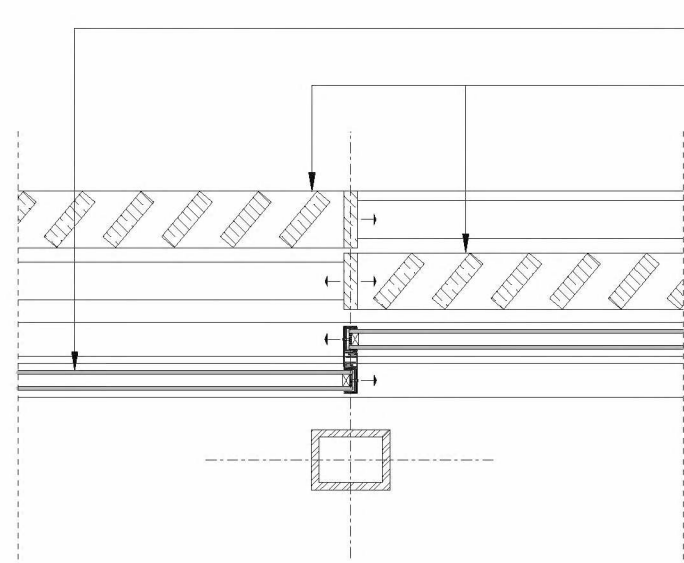
- Mechanism/ counterweights for guillotine windows as per supplier's specifications
- Concrete structure
- Painted steel flat post to secure facade system
- Rain water pipe from terrace above
- Removable access panels fixed with countersunk bolts
- Double guillotine system with fixed bottom timber panel
- Low Iron double glazed system with laminated external panel



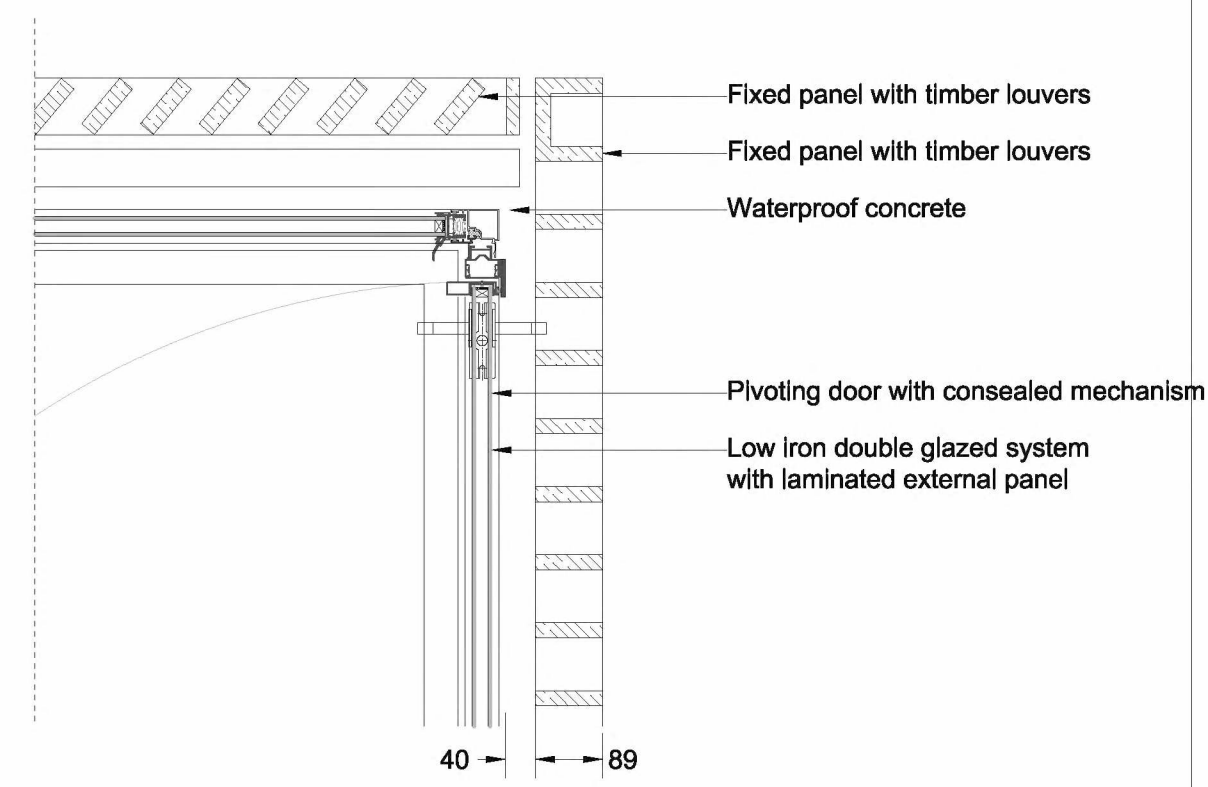
- Timber window sill
- Prefabricated concrete edge beam
- Insulated 2mm powder coated steel cladding
- Painted steel flat post to secure facade system
- Low Iron double glazed system with laminated external panel
- Pivoting door with consealed mechanism



- Triple sliding door system on timber frame and black powder coated metal subframe



- Low Iron double glazed units
- Sliding panels with timber louvers



- Fixed panel with timber louvers
- Fixed panel with timber louvers
- Waterproof concrete
- Pivoting door with consealed mechanism
- Low Iron double glazed system with laminated external panel

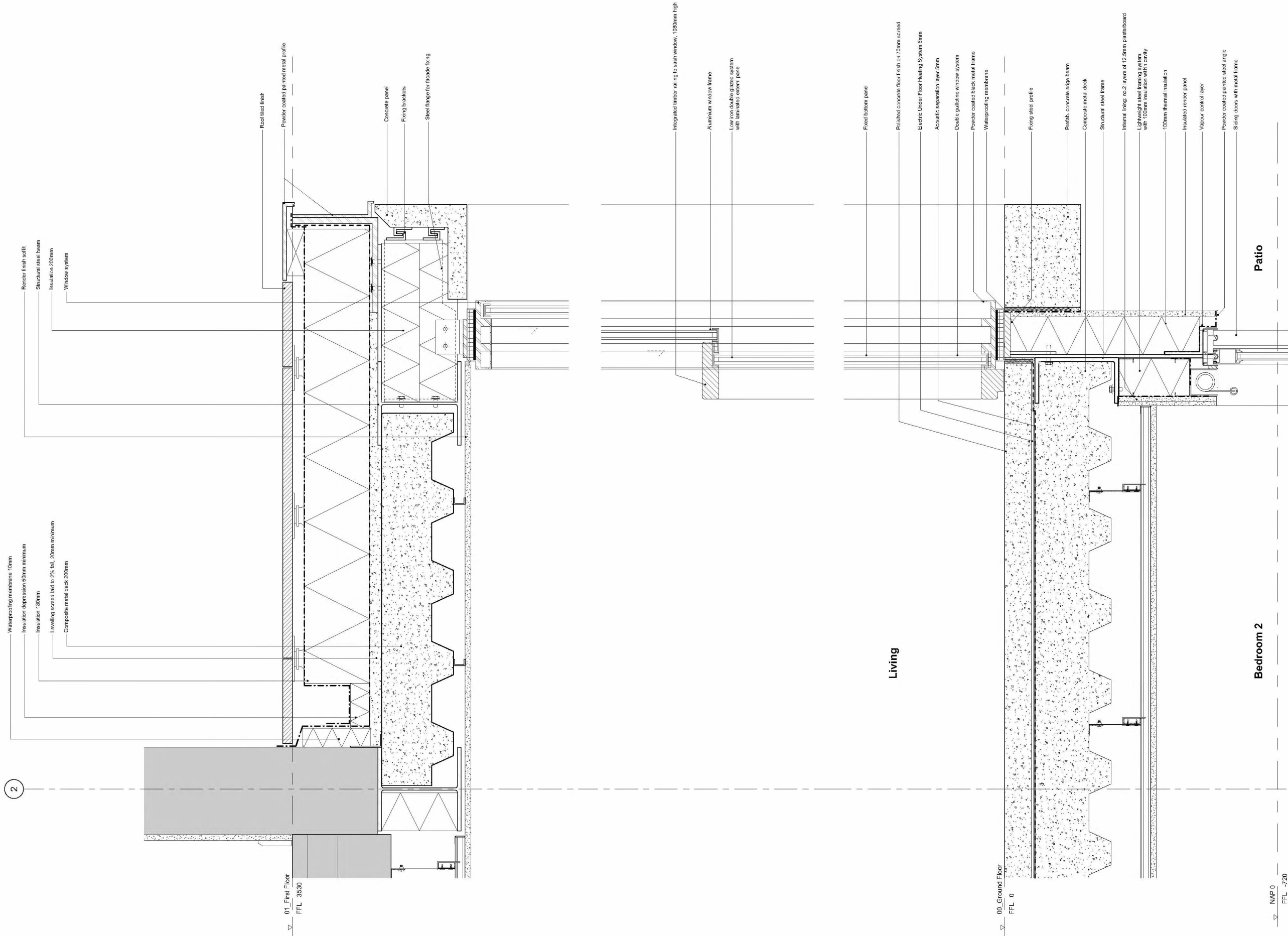
1 DETAILED FACADE PLAN  
1:5

Do not scale from this drawing. Use figured dimensions only. Figured dimensions are in millimetres. All levels are in metres. All dimensions and levels shall be verified on site before proceeding with works. The Architect must be notified of any discrepancy. The Architect is not responsible for any errors caused by the transmission, translation, software or computer systems. The Architect is not responsible for, nor shall be liable for, the consequences of any use made of the drawings or models, other than that for which they were produced for the Client.

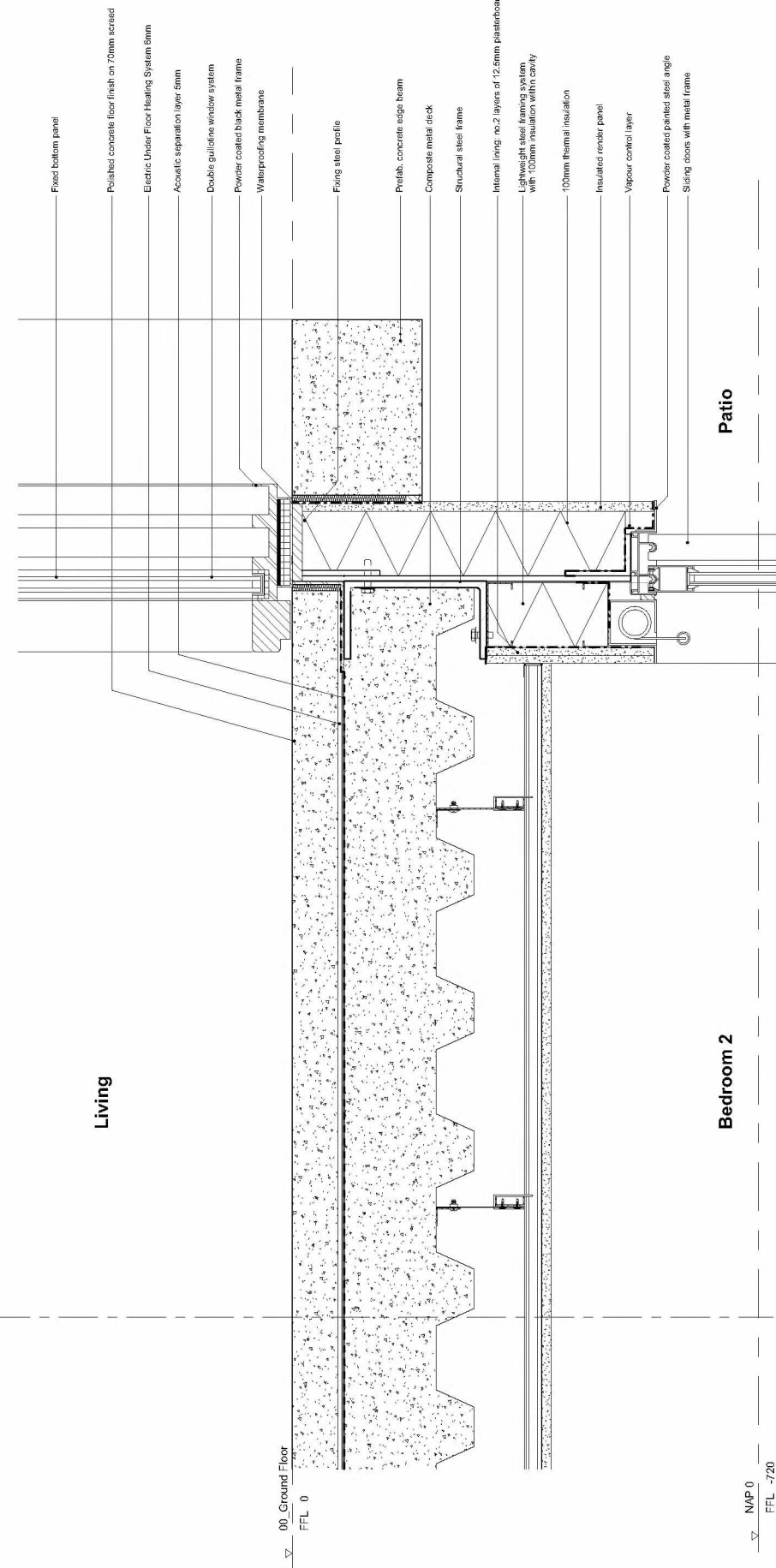
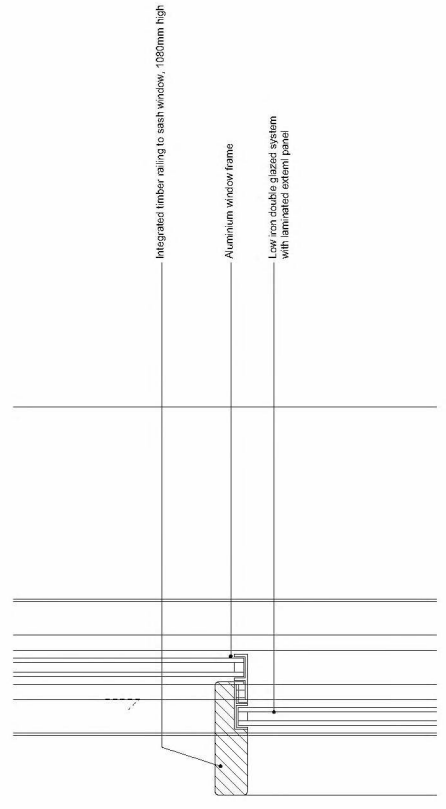
REV	DATE	DESCRIPTION	CRD
P1	20.08.2018	For information	
P2	25.11.2018	For information	

**BLU studio**  
63 Comeragh Rd  
London W14 9HT  
telephone 0044 7466595358  
mail office@blustudio.uk  
JOB NO: 100

Eerste Helmersstraat 107 :  
CONCRETE WALL DETAILS  
EXTERNAL ENVELOPE  
100\_21\_900  
SCALE 1:5 @A1



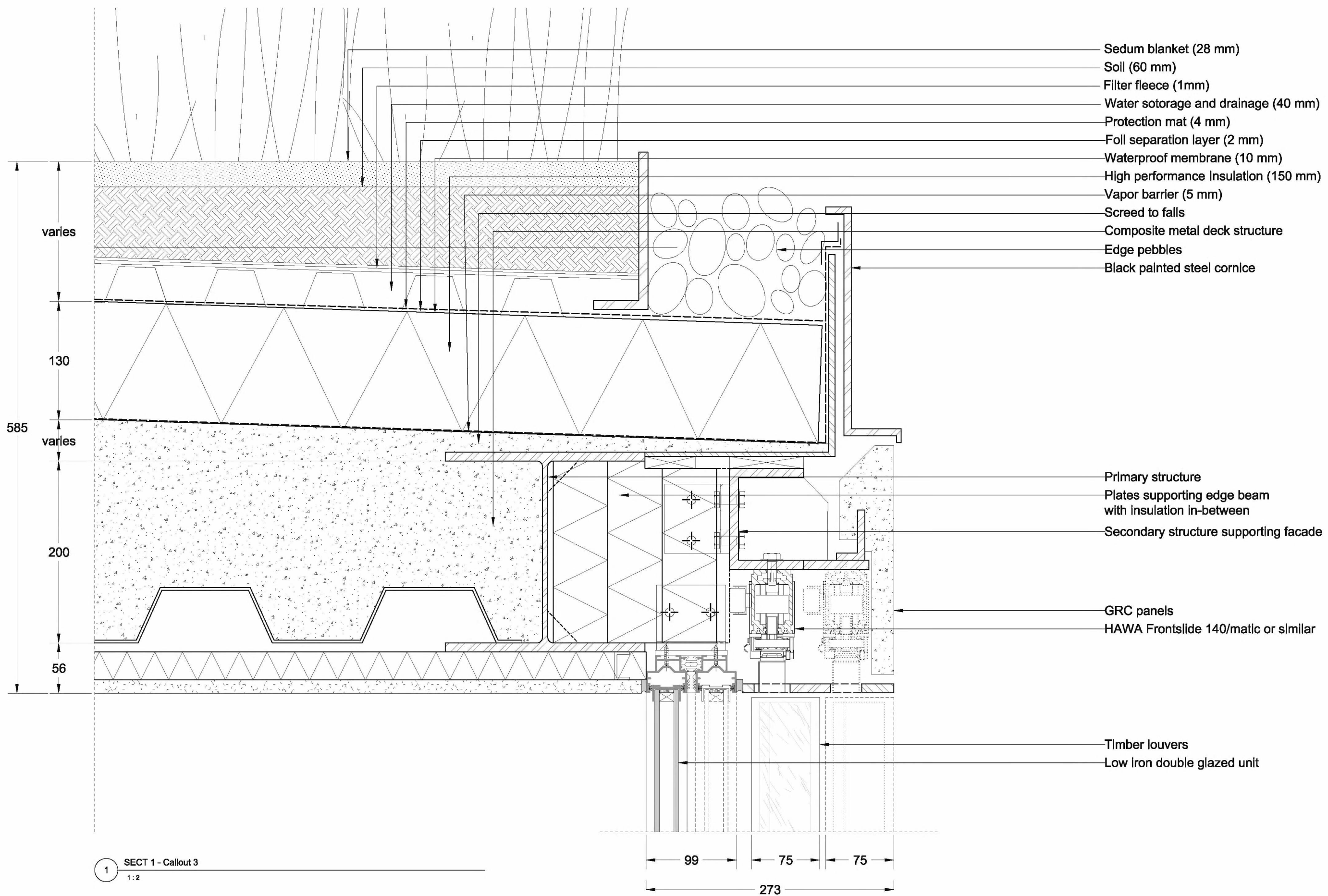
1 Facade section detail through window  
1 : 5



REV.	DATE	DESCRIPTION
P1	05.07.2015	For information
P2	20.08.2015	For information
P3	25.11.2015	For information

BLU studio  
63 Comenagh Road  
London W14 8HT  
Tel: +44 (0)20 885 8888  
info@blustudio.uk

Eerste Heimerstraat 107  
EXTERNAL ENVELOPE  
SOUTH ELEVATION DETAILS 01  
100\_21\_902  
SCALE 1 : 5 @A1



- Sedum blanket (28 mm)
- Soil (60 mm)
- Filter fleece (1mm)
- Water storage and drainage (40 mm)
- Protection mat (4 mm)
- Foil separation layer (2 mm)
- Waterproof membrane (10 mm)
- High performance Insulation (150 mm)
- Vapor barrier (5 mm)
- Screed to falls
- Composite metal deck structure
- Edge pebbles
- Black painted steel cornice

- Primary structure
- Plates supporting edge beam with insulation in-between
- Secondary structure supporting facade
- GRC panels
- HAWA Frontslide 140/matic or similar

- Timber louvers
- Low iron double glazed unit

1 SECT 1 - Callout 3  
1:2

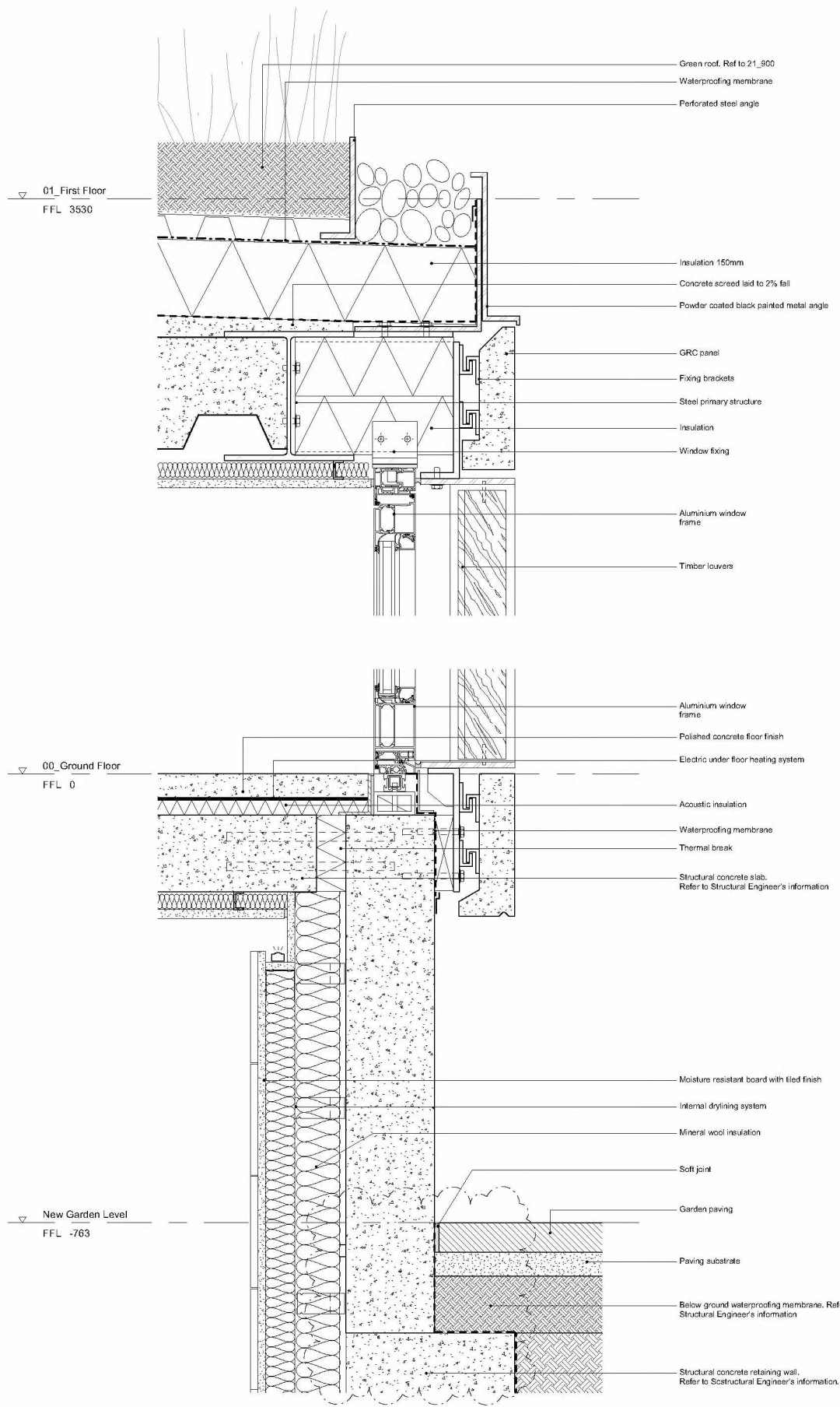
99      75      75  
273

Do not scale from this drawing. Use figured dimensions only. Figured dimensions are in millimetres. All levels are in metres. All dimensions and levels shall be verified on site before proceeding with works. The Architect must be notified of any discrepancy. The Architect is not responsible for any errors caused by the transmission, translation, software or computer systems. The Architect is not responsible for, nor shall be liable for, the consequences of any use made of the drawings or models, other than that for which they were produced for the Client.

REV	DATE	DESCRIPTION	BY
P1	20.08.2018	For information	
P2	25.11.2018	For information	

**BLU studio**  
63 Comeragh Rd  
London W14 9HT  
telephone 0044 7466595358  
mail office@blustudio.uk  
**JOB NO: 100**

Eerste Helmersstraat 107 :  
EAST FACADE DETAIL  
EXTERNAL ENVELOPE  
100\_21\_900  
SCALE 1:2 @A1



1 Perforated concrete wall detail  
1:5

Do not scale from this drawing. Use figured dimensions only. Figured dimensions are in millimetres. All levels are in metres. All dimensions and levels shall be verified on site before proceeding with works. The Architect must be notified of any discrepancy. The Architect is not responsible for any errors caused by the transmission, translation, software or computer systems. The Architect is not responsible for, nor shall be liable for, the consequences of any use made of the drawings or models, other than that for which they were produced for the Client.

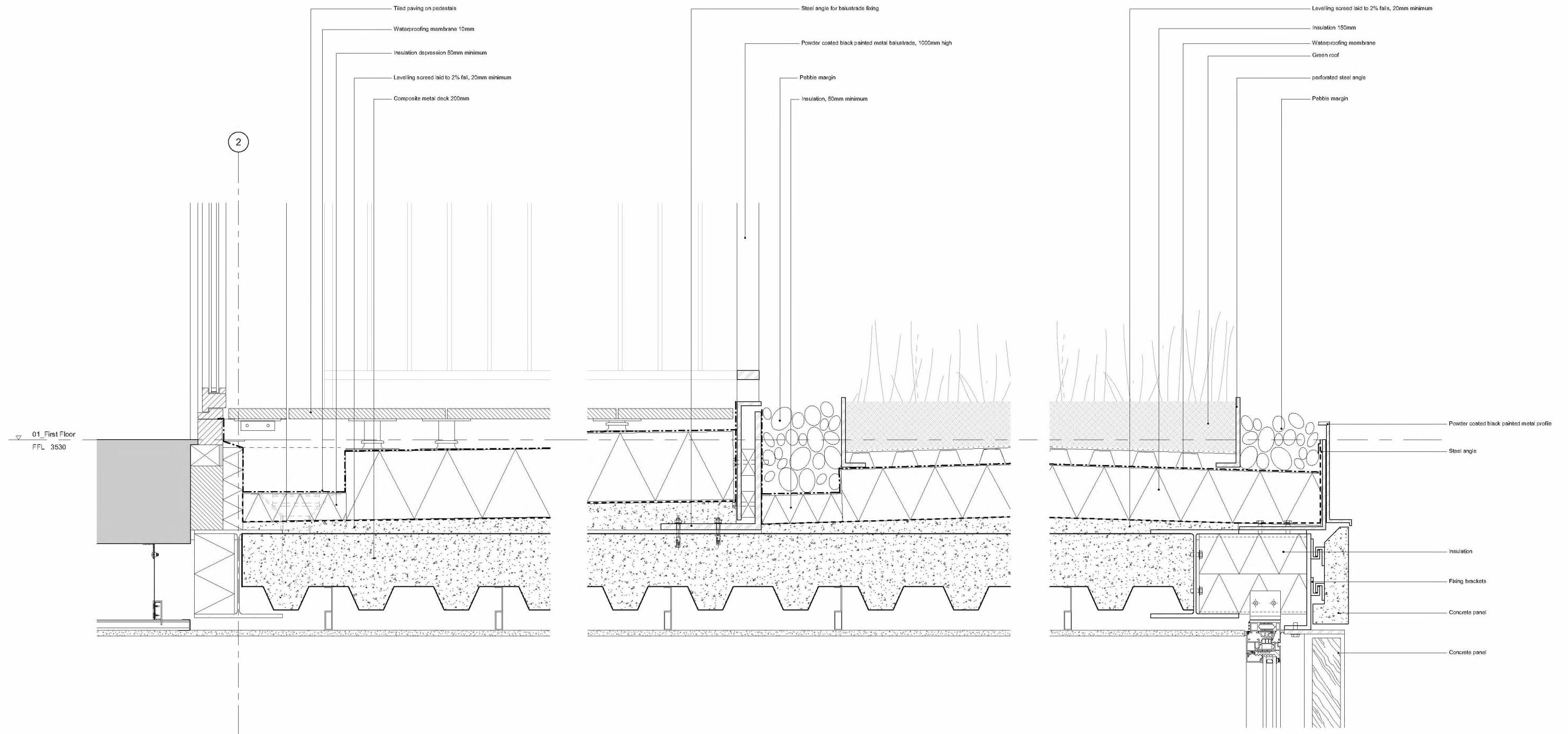
REV	DATE	DESCRIPTION	CHK
P1	23.08.2018	For Information	

**BLU studio**  
63 Comeragh Rd  
London W14 9JT  
0044 746593358  
office@blustudio.co.uk  
telephone  
mail

**JOB NO: 100**

Eerste Helmersstraat 107 :  
**SOUTH ELEVATION DETAIL 02**  
**EXTERNAL ENVELOPE**  
100\_21\_903  
SCALE 1:5 @A1

P1



1 Terrace and green roof Section  
1:5

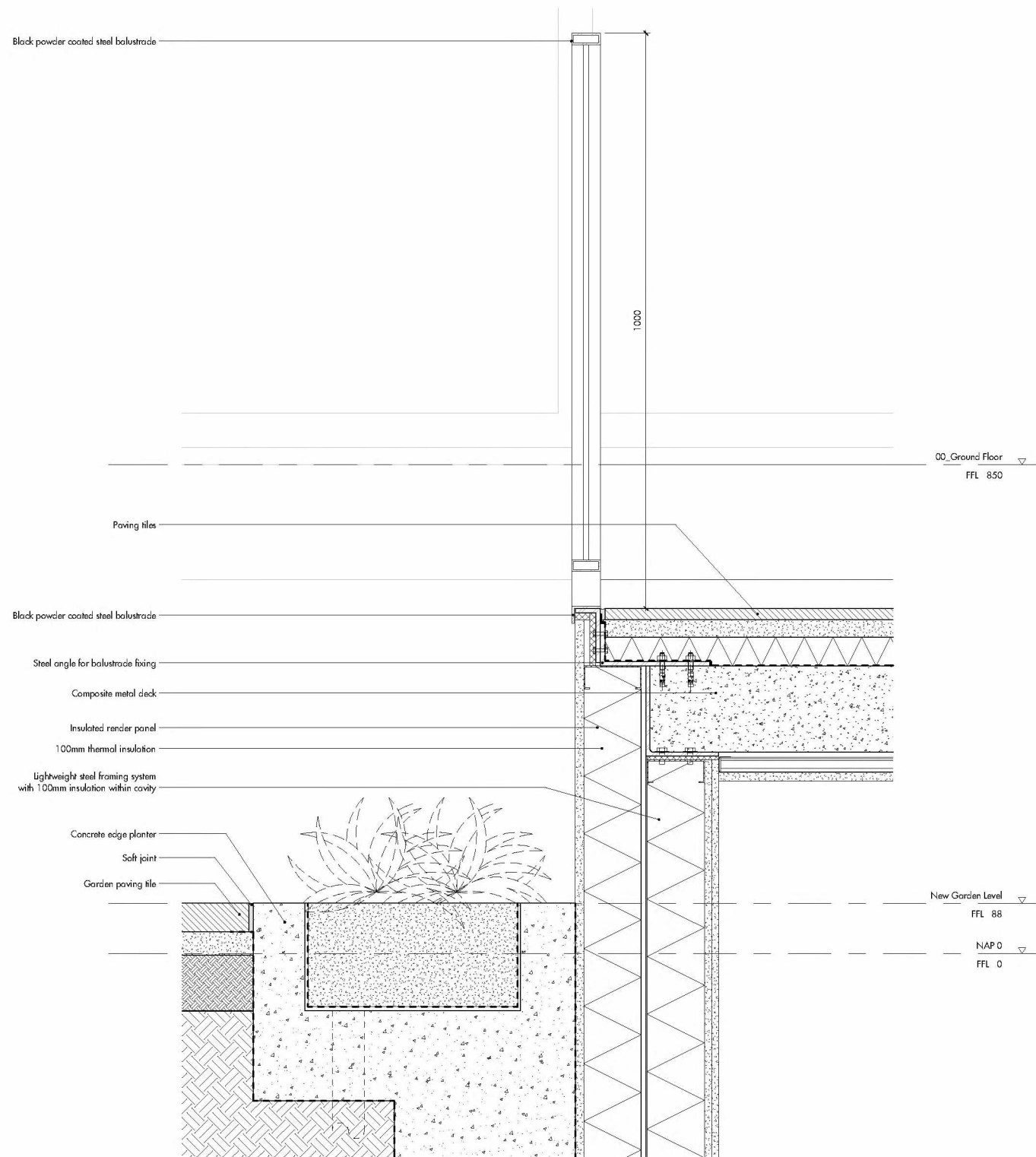
Do not scale from this drawing. Use figured dimensions only. Figured dimensions are in millimetres. All levels are in metres. All dimensions and levels shall be verified on site before proceeding with works. The Architect must be notified of any discrepancy. The Architect is not responsible for any errors caused by the transmission, translation, software or computer system. The Architect is not responsible for, nor shall be liable for, the consequences of any use made of the drawings or models, other than that for which they were produced for the Client.

REV	DATE	DESCRIPTION	DRG
P1	25.11.2018	For information	

**BLU studio**  
63 Cornwall Rd  
London W14 9HT  
0204 748693358  
office@blustudio.uk  
telephone  
mail

**JOB NO: 100**

Eerste Helmersstraat 107 :  
**TERRACE / GREEN ROOF DETAILS**  
**EXTERNAL ENVELOPE**  
100\_21\_904  
SCALE 1:5 @A1  
SCALE 1:200 @A2



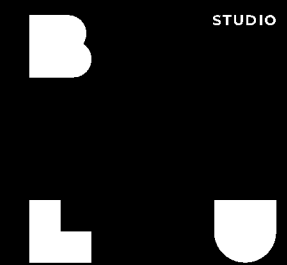
1 External balustrade typical detail  
1:5

Do not scale from this drawing. Use figured dimensions only. Figured dimensions are in millimetres. All levels are in metres. All dimensions and levels shall be verified on site before proceeding with works. The Architect must be notified of any discrepancy. The Architect is not responsible for any errors caused by the transmission, translation, software or computer systems. The Architect is not responsible for, nor shall be liable for, the consequences of any use made of the drawings or models, other than that for which they were produced for the Client

REV	DATE	DESCRIPTION	DRG
P1	20.08.2018	For information	

**BLU studio**  
63 Comeragh Rd  
London W14 9HT  
telephone 0044 7466 595358  
mail office@blustudio.uk  
JOB NO: 100

Eerste Helmersstraat 107 :  
EXT. BALUSTRADE TYPICAL DETAIL 01  
METALWORK  
100\_34\_700  
SCALE 1:5 @A1



BLU Studio Ltd  
63 Comeragh Road  
W149HT London  
UK

[office@blustudio.uk](mailto:office@blustudio.uk)