

Tijdens montage mag Riet niet van stelplaatjes gebruik gemaakt worden

gat op montage te boien.

63 ff

Tijdens montage zoo noodig alleen Riet stelplaatjes te gebruiken.

Bevestiging leuning aan buitenligger met uitshanningen. Gat in gegiet beton te maken als volgt in teken te zien. aannemers onderbouw 56ste maken.

Bevestiging leuning aan buitenligger arcade. 37 te maken. Einde leuning op val.

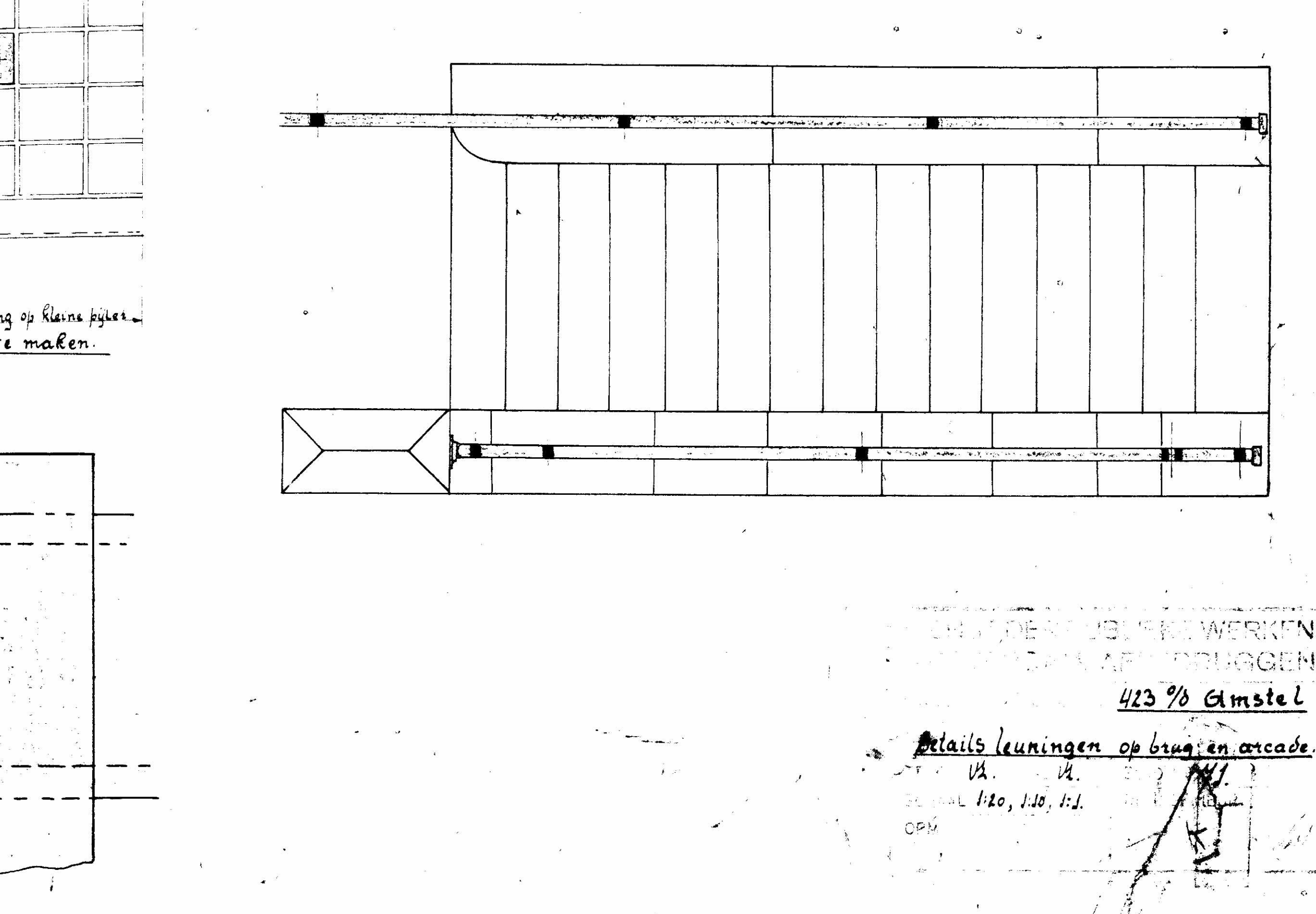
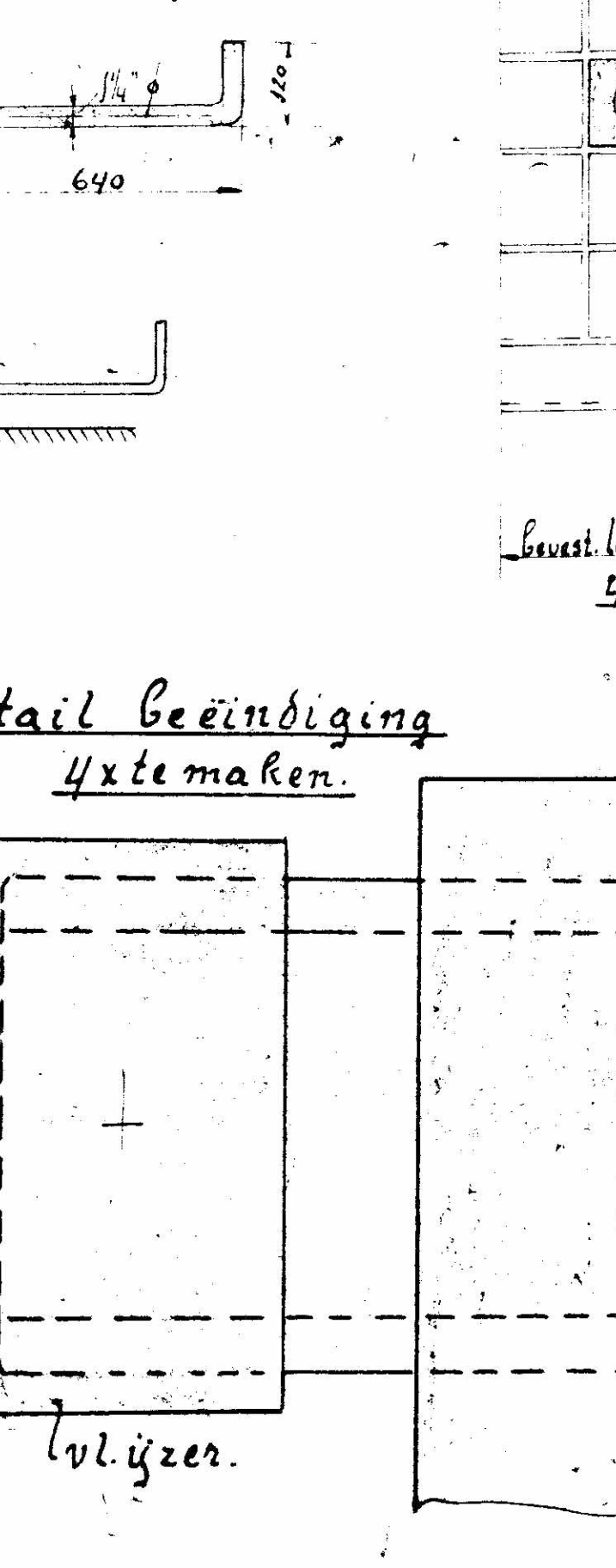
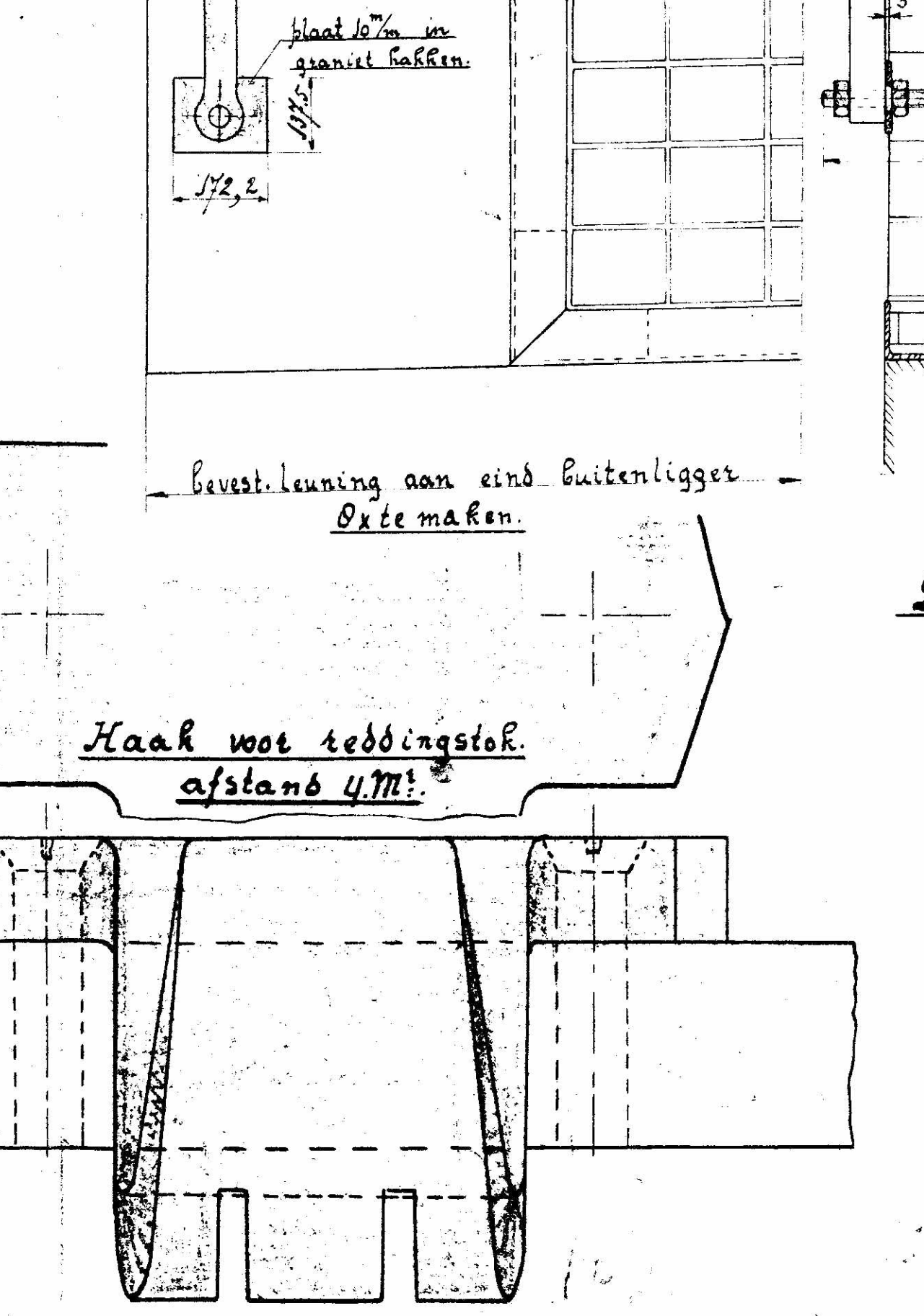
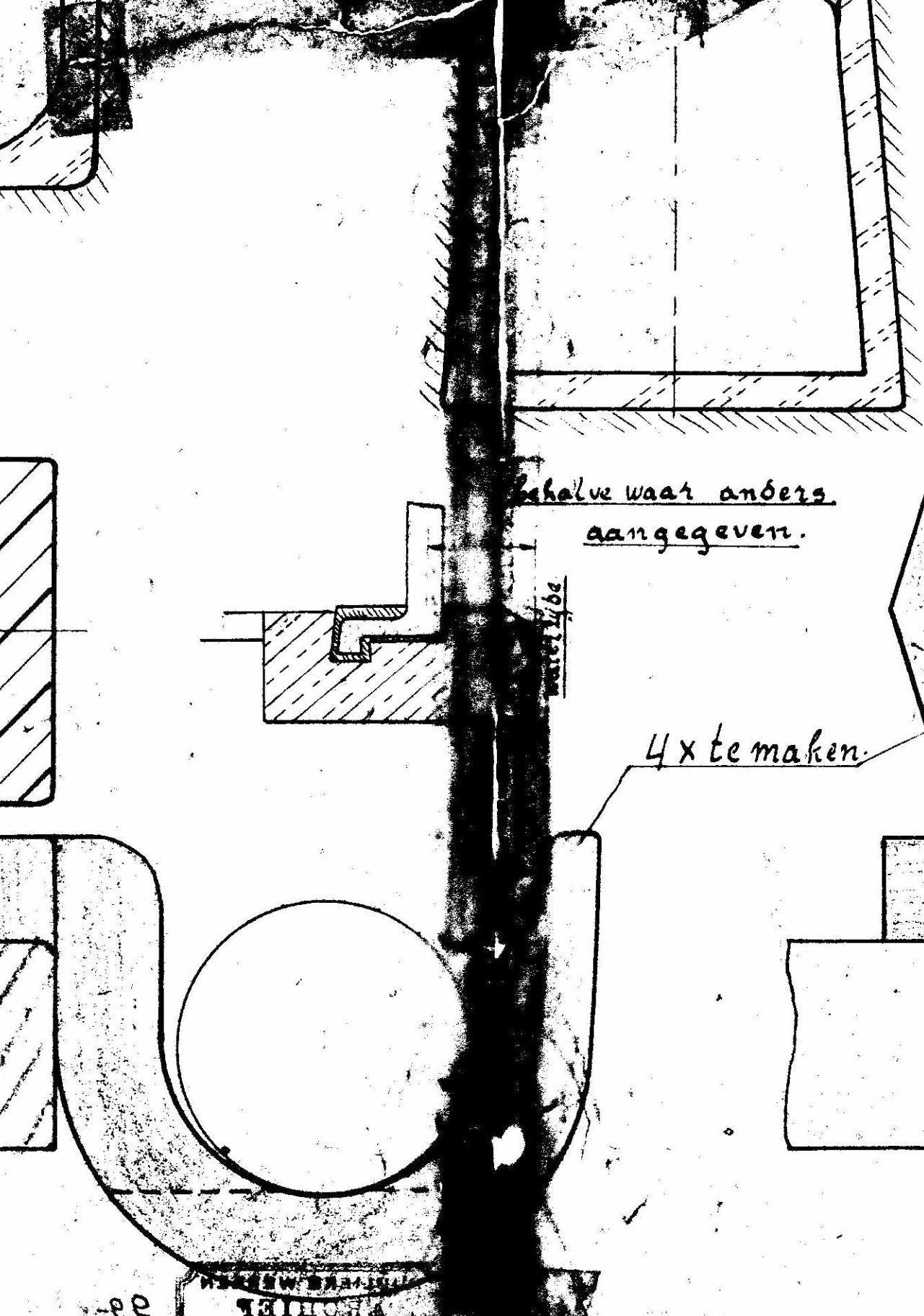
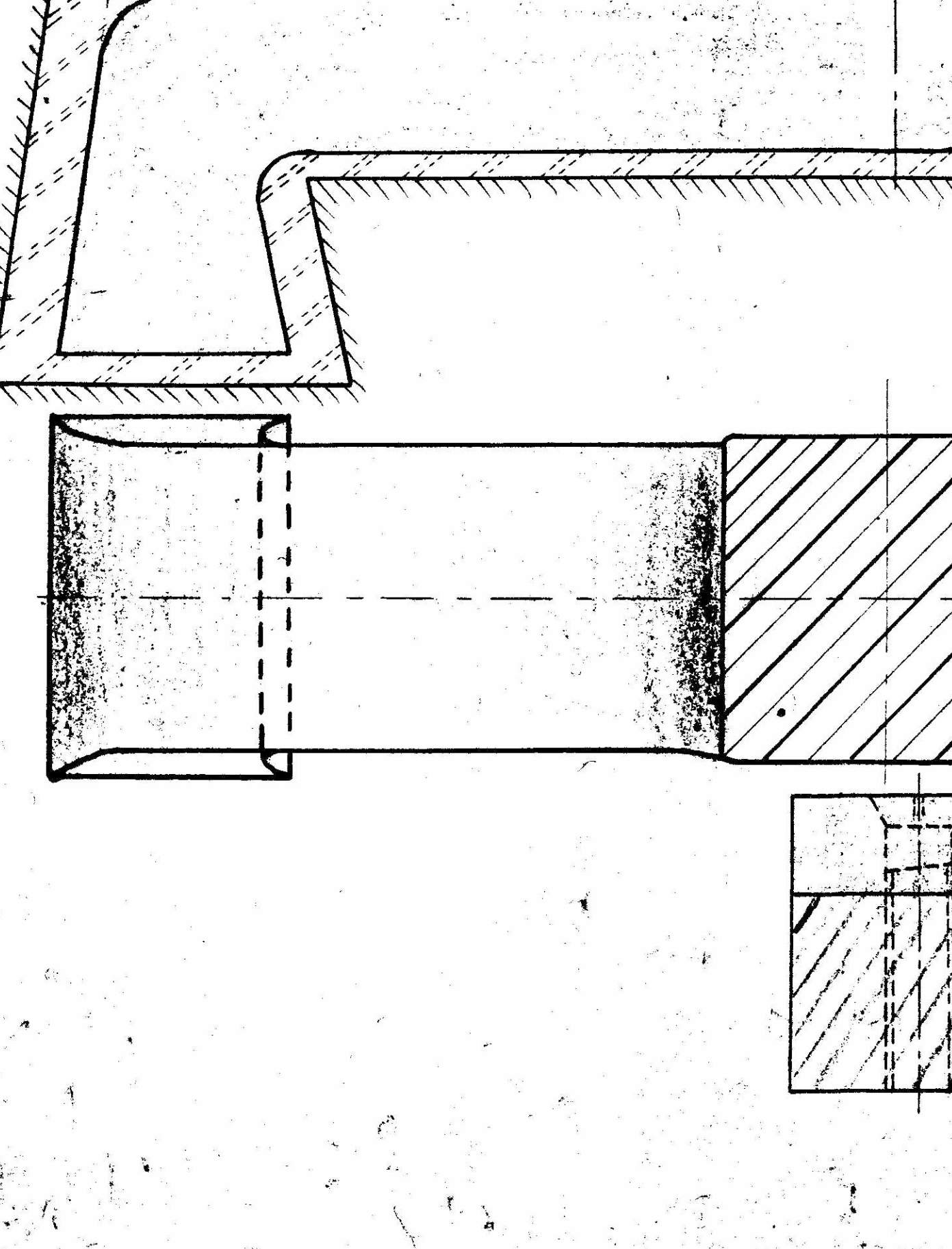
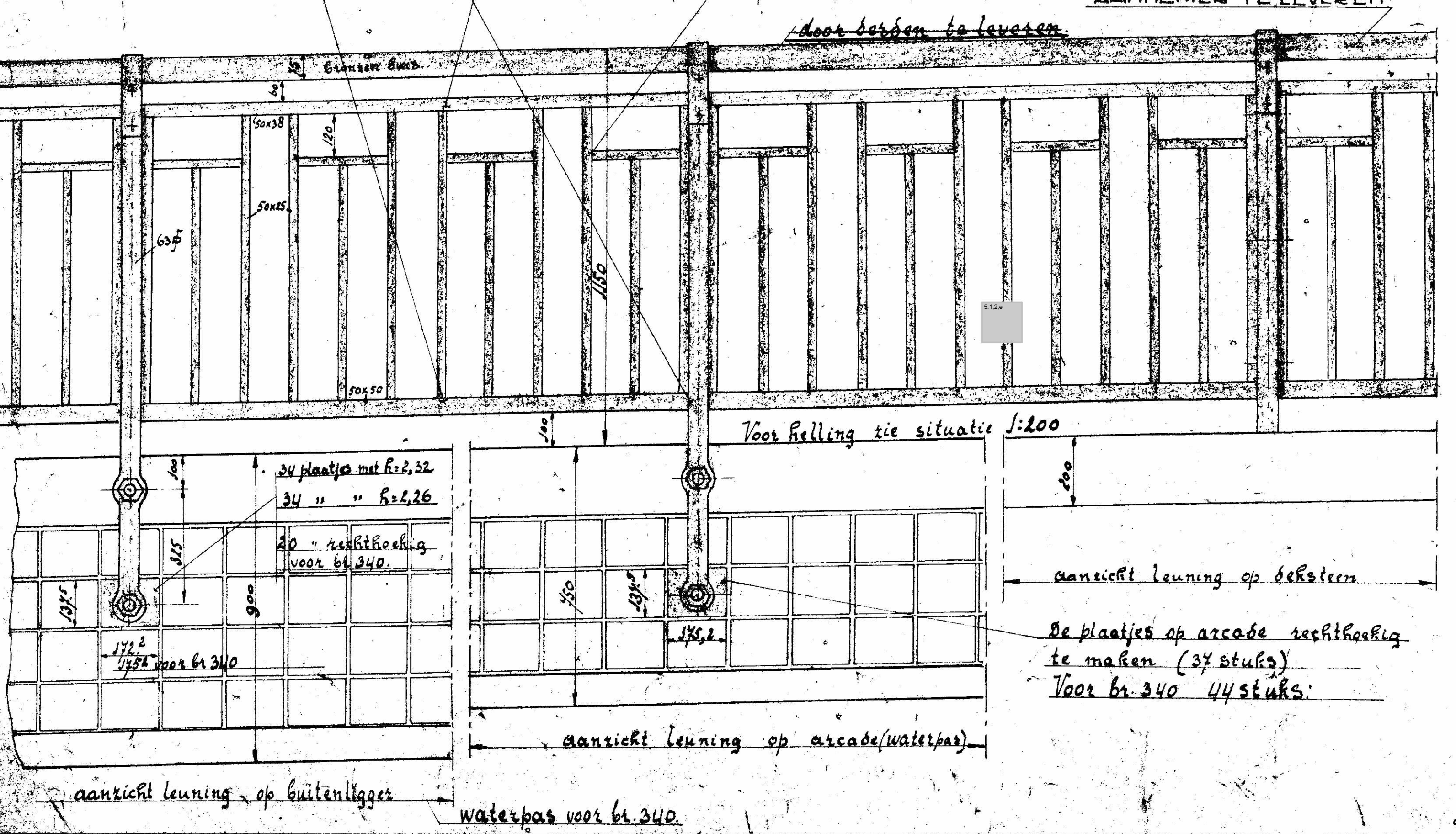
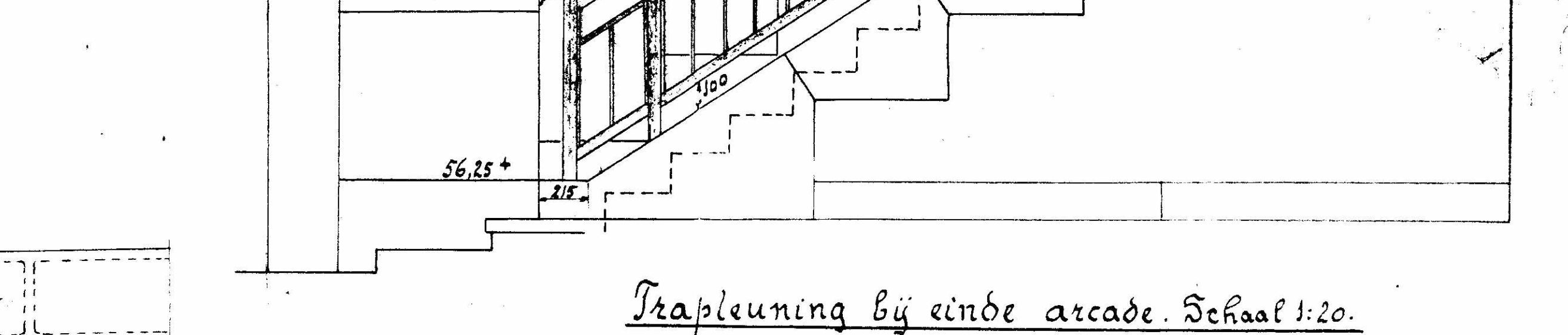
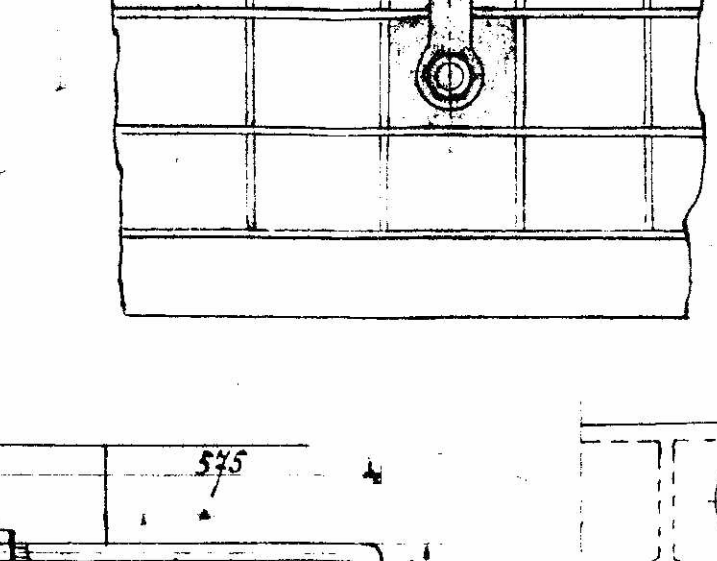
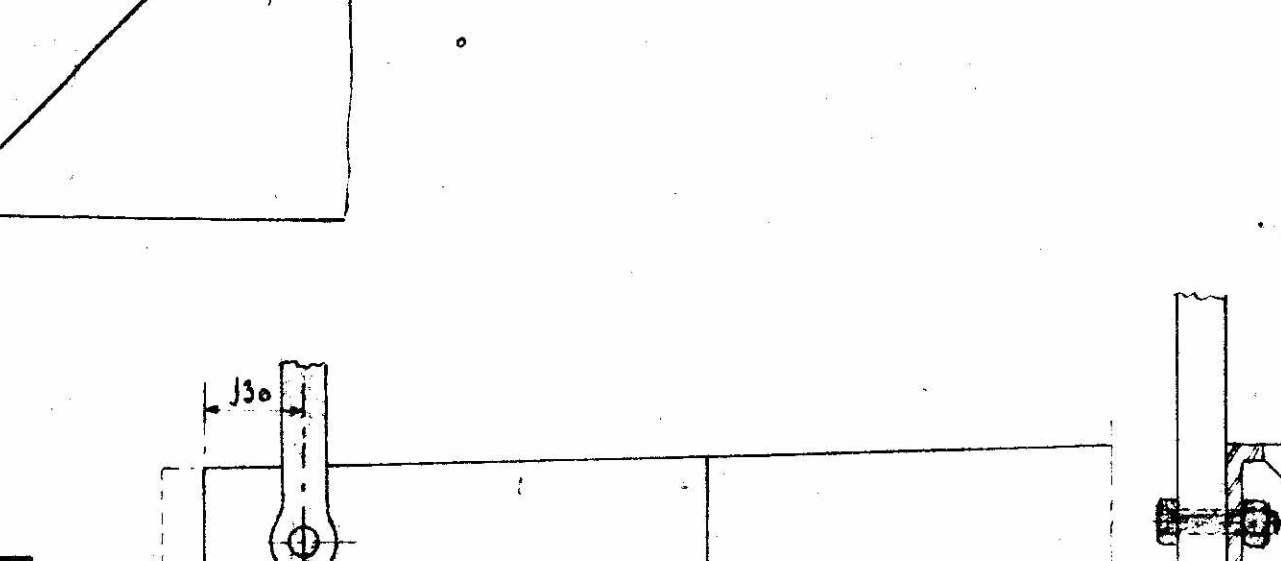
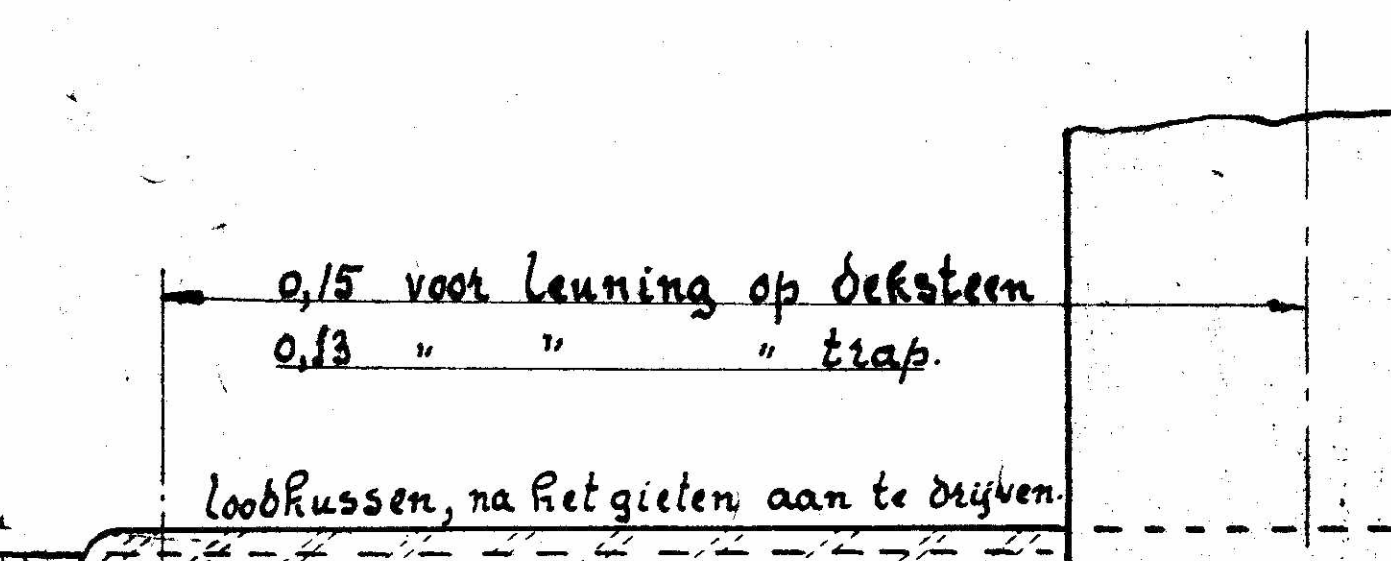
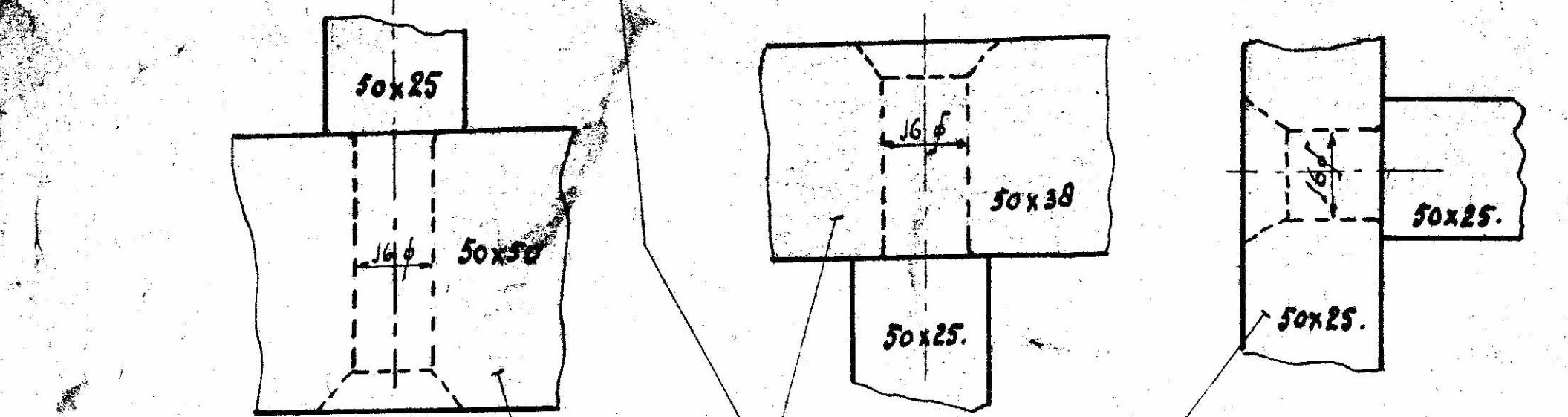
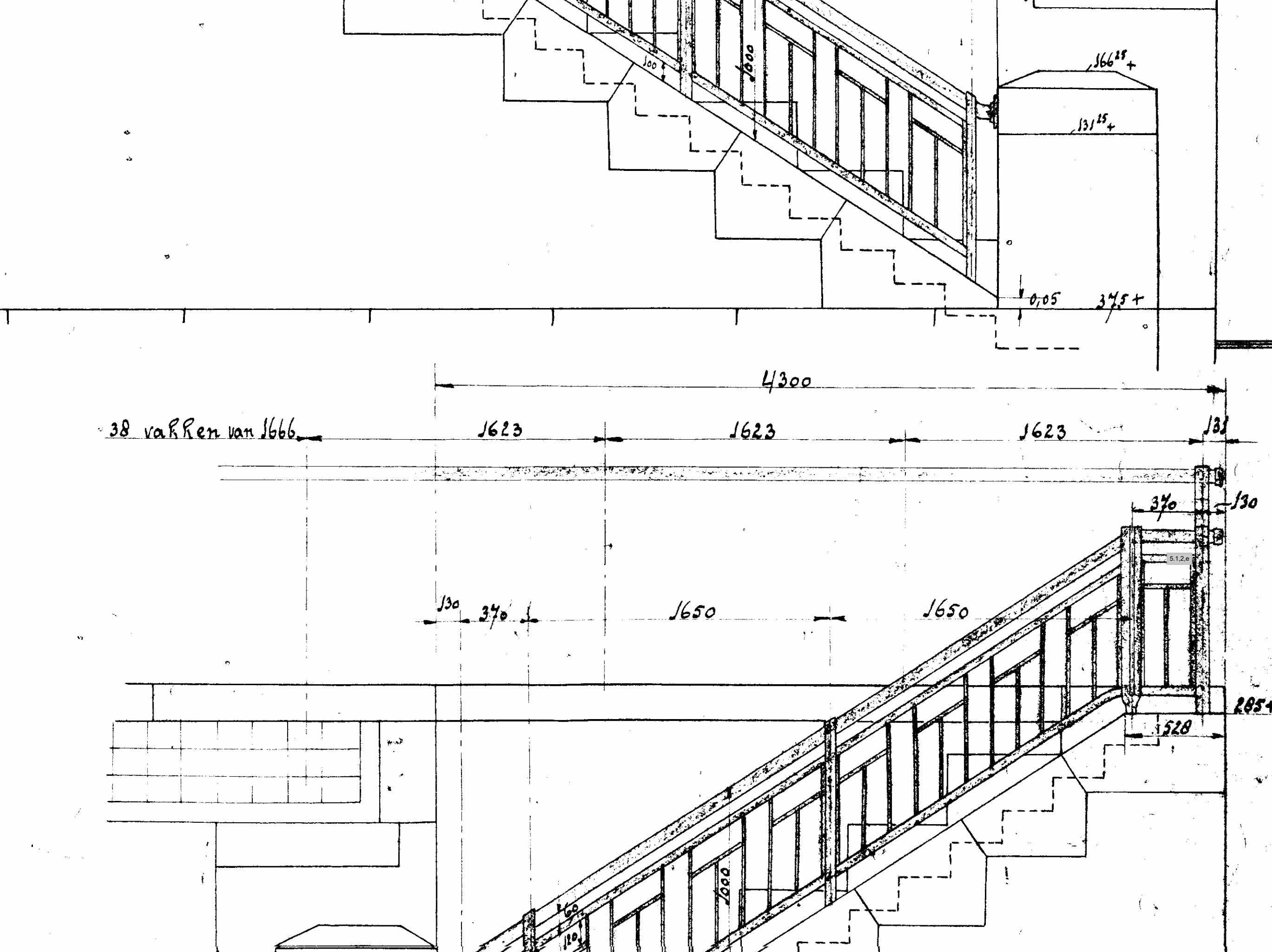
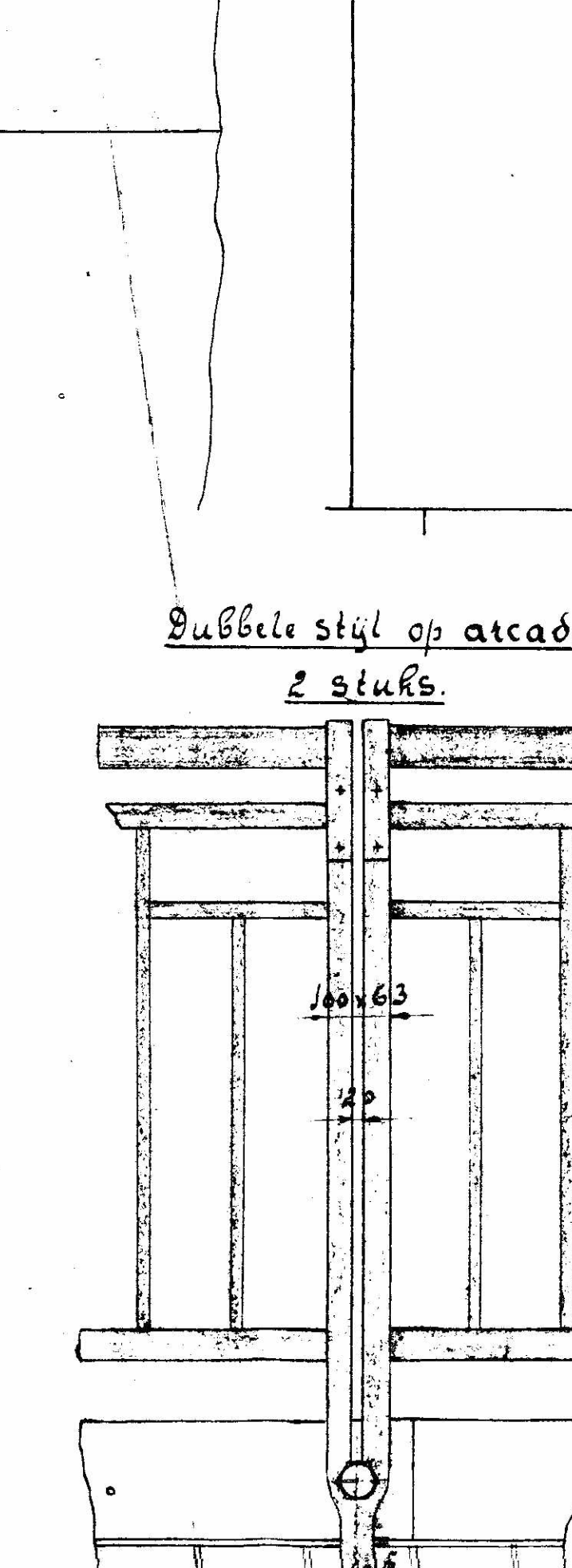
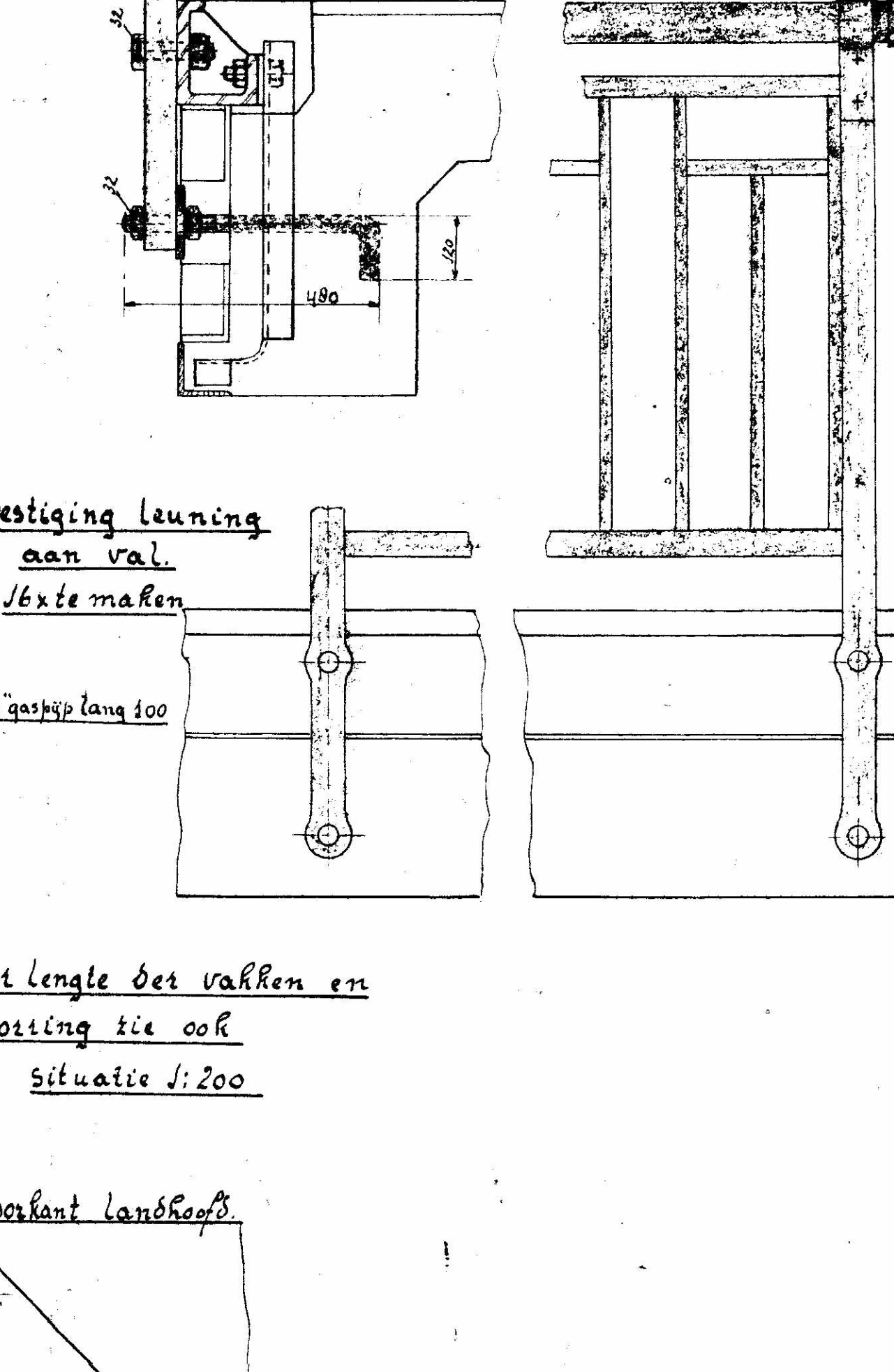
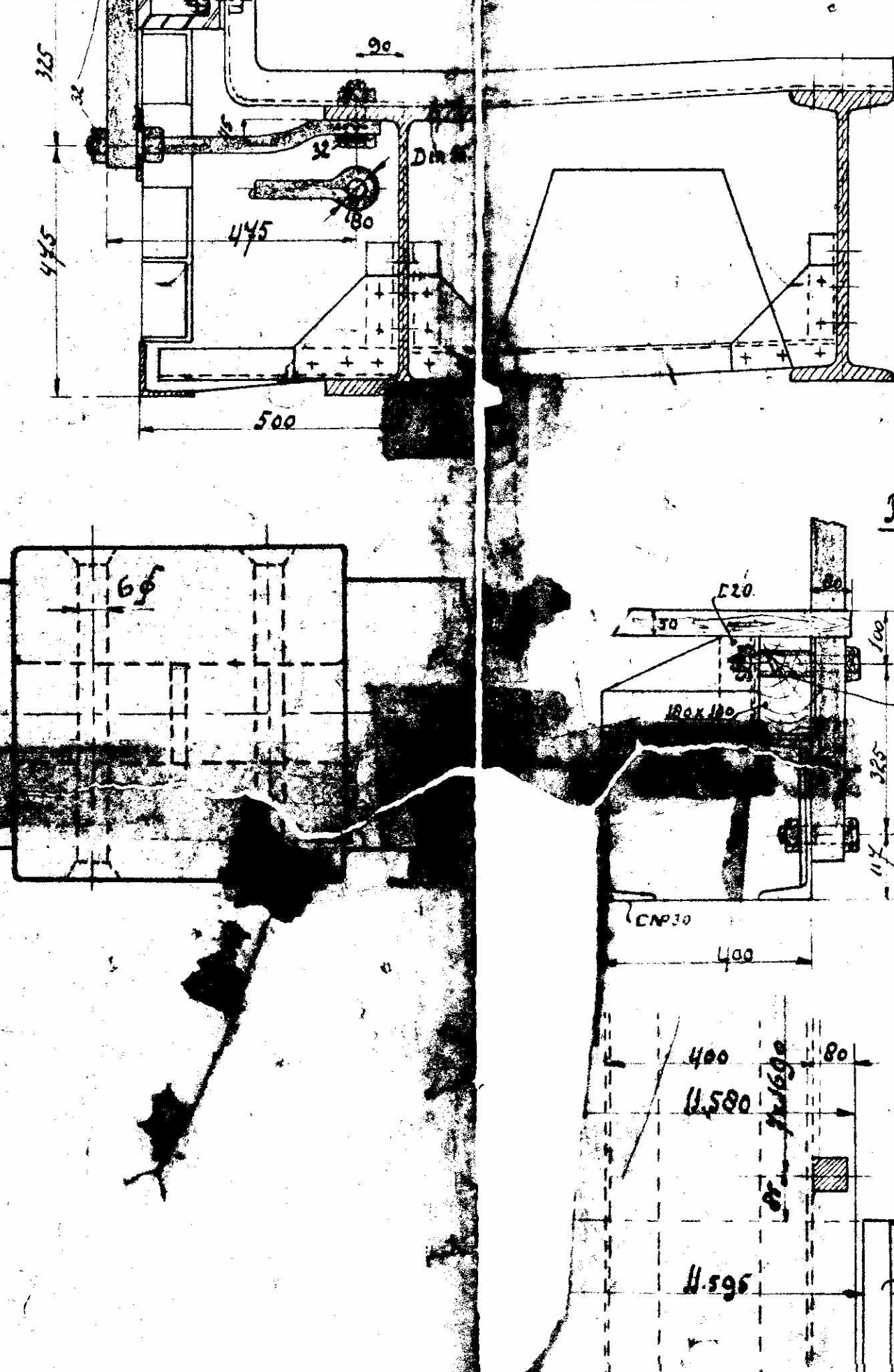
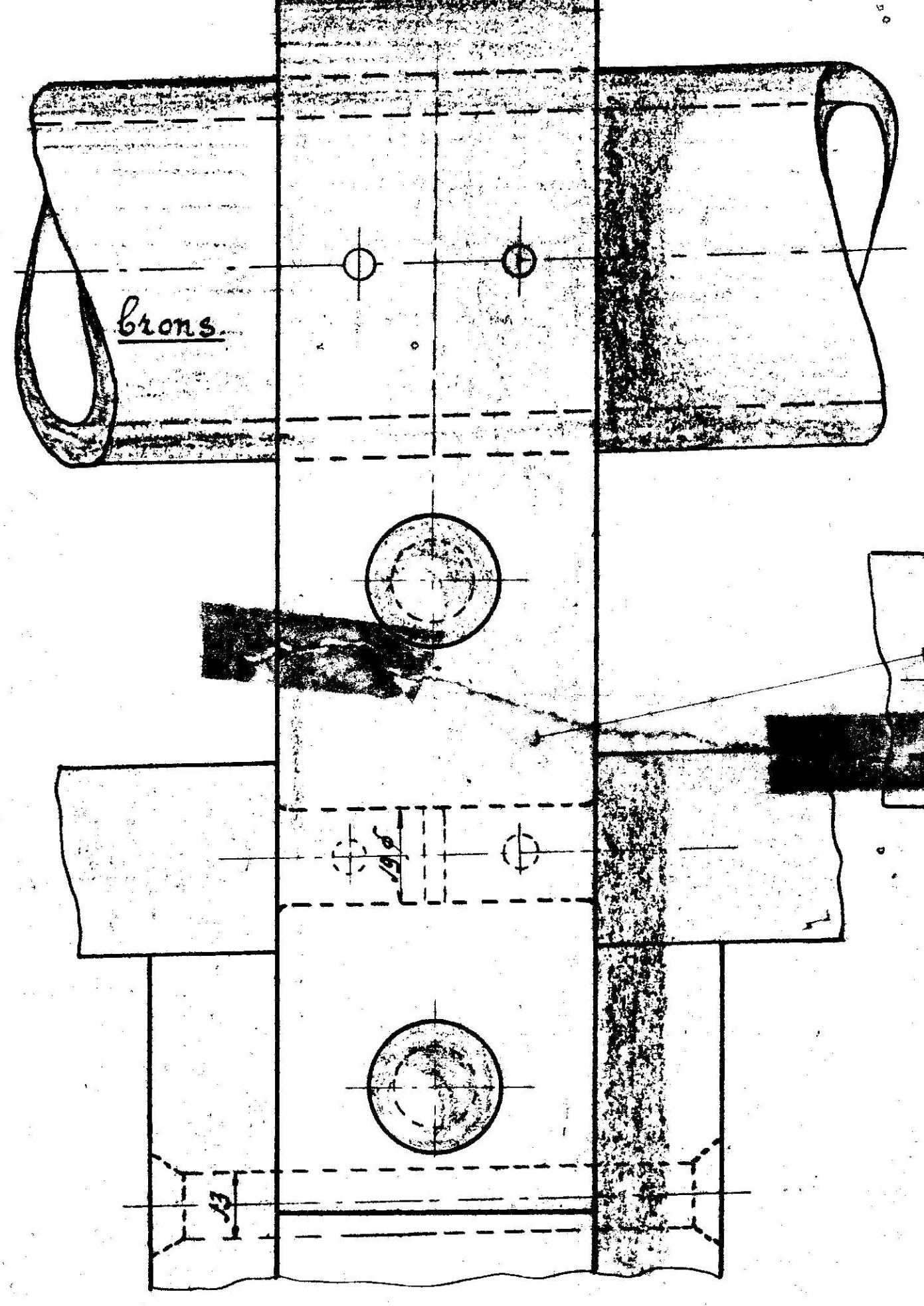
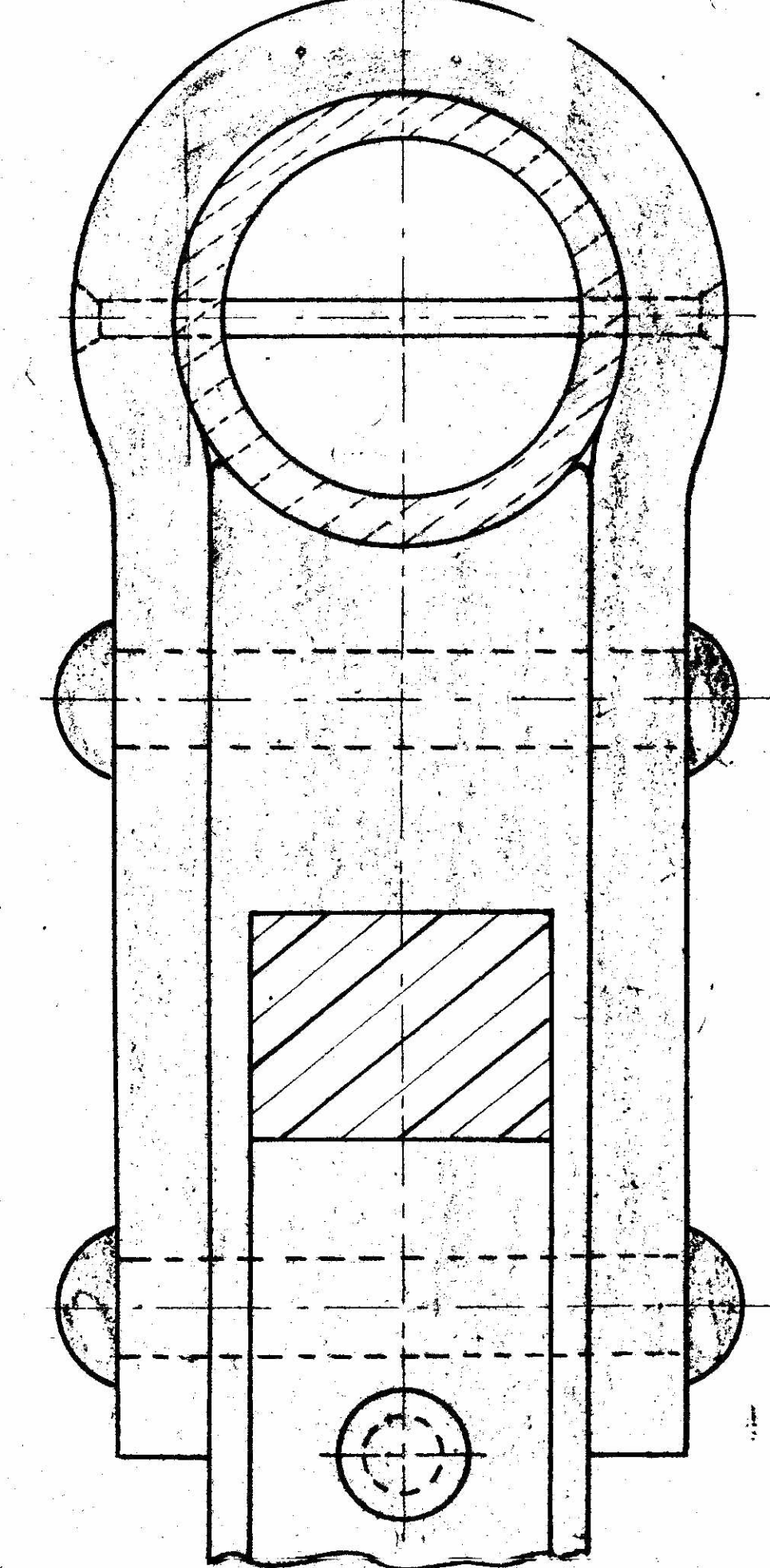
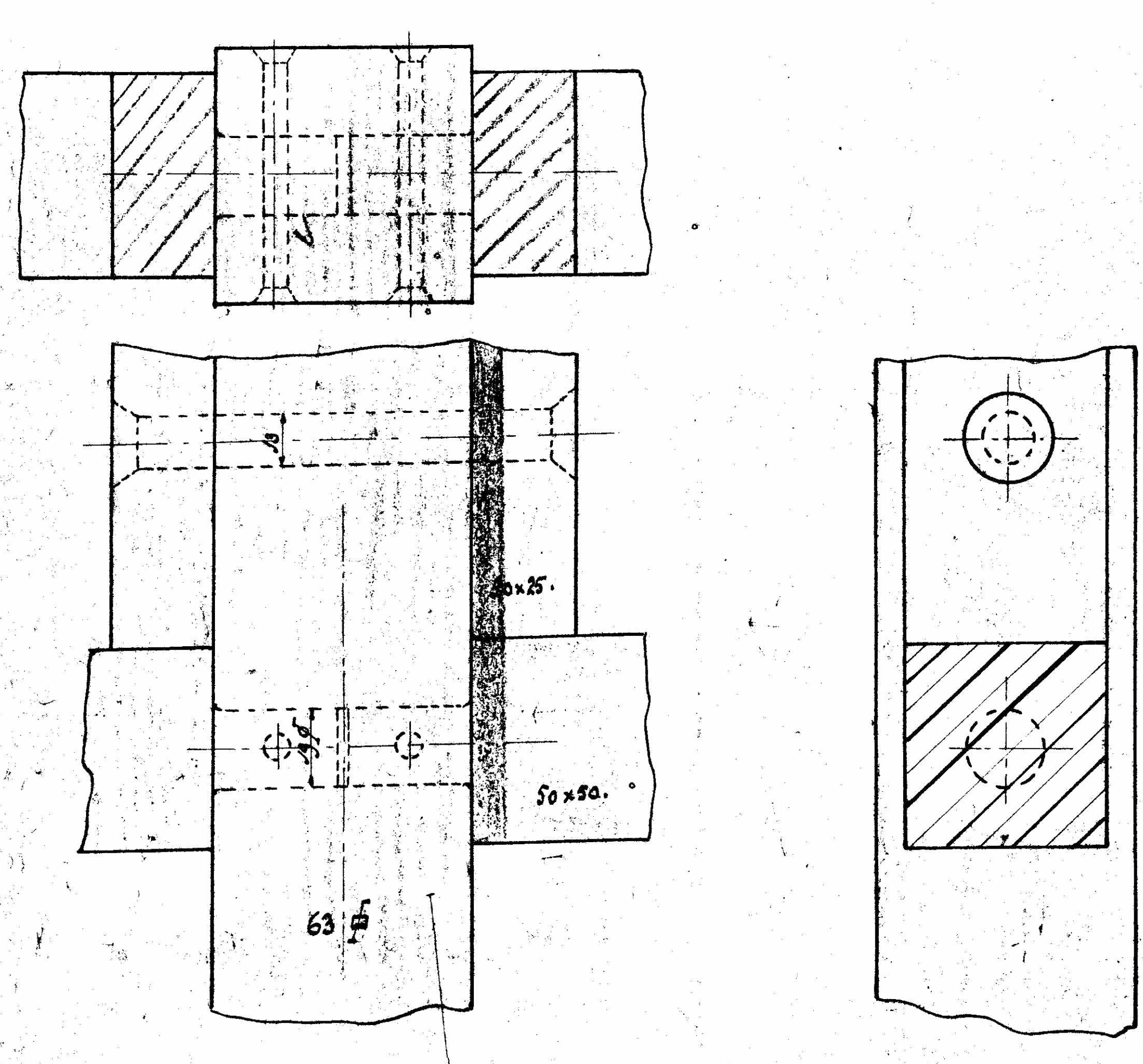
Bevestiging leuning aan val. 16 te maken. 1/8 gatlang 200.

Voet lengte der vakken en loopping zie ook situatie 1:200.

Dubbele stijl op arcade. 2 stuks.

Trapleuning bij Westelyk Landhoofd. Schaal 1:20.

Trapleuning bij einde arcade. Schaal 1:20.



WERKIN
423 78 Amstel
110, 116, 117