

# Hilversumstraat Zuidkaap

Februari 2023



**DONIGER**  
URBAN DEVELOPMENTS

**MV**  
**SA**

# NETWERK AMSTERDAM



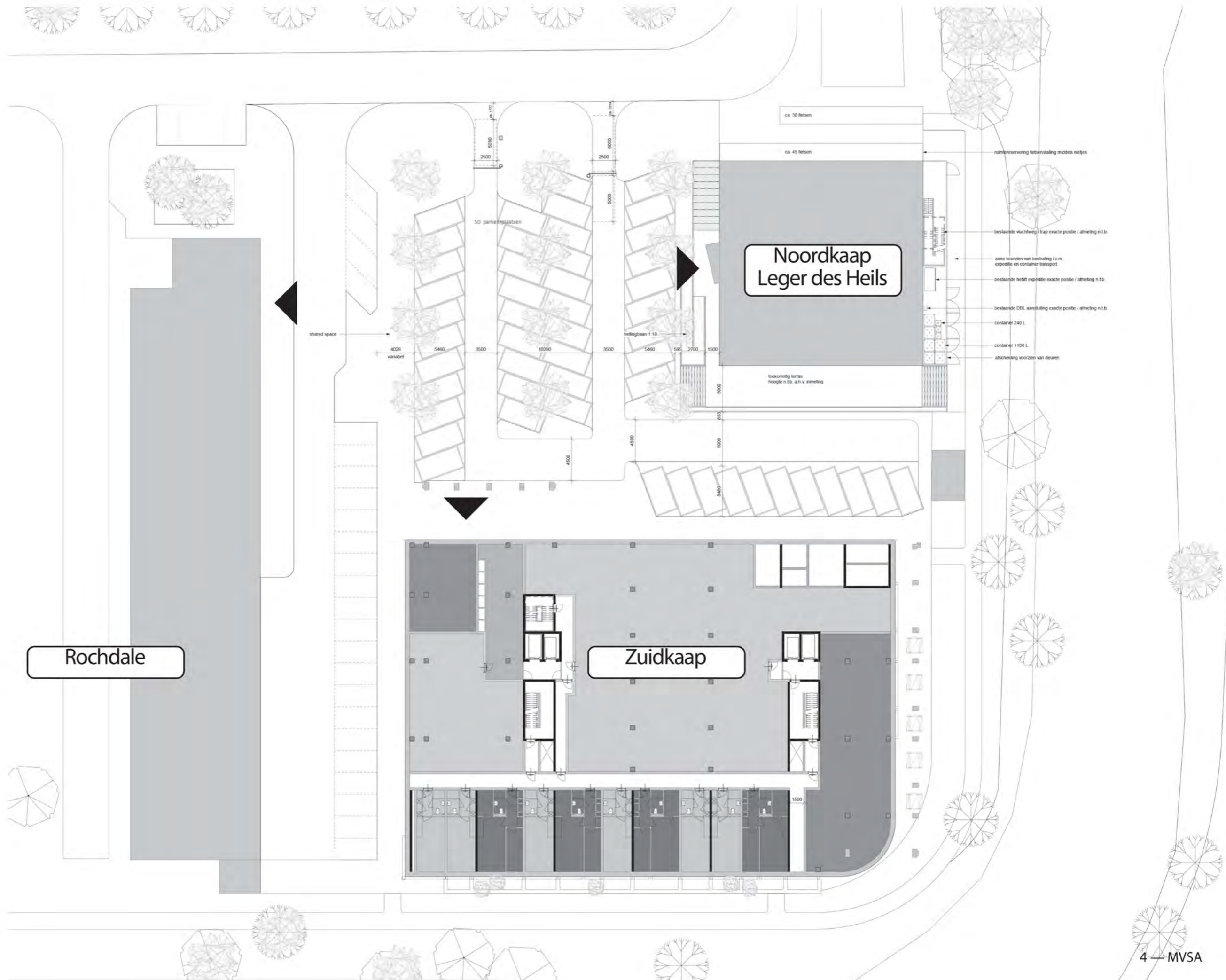
Locatie ligt binnen de ring van Amsterdam

# PLANGEBIED WATERLANDPLEINBUURT



Plangebied Waterlandpleinbuurt direct gelegen aan de A10 afslag S115

# MAAIVELD



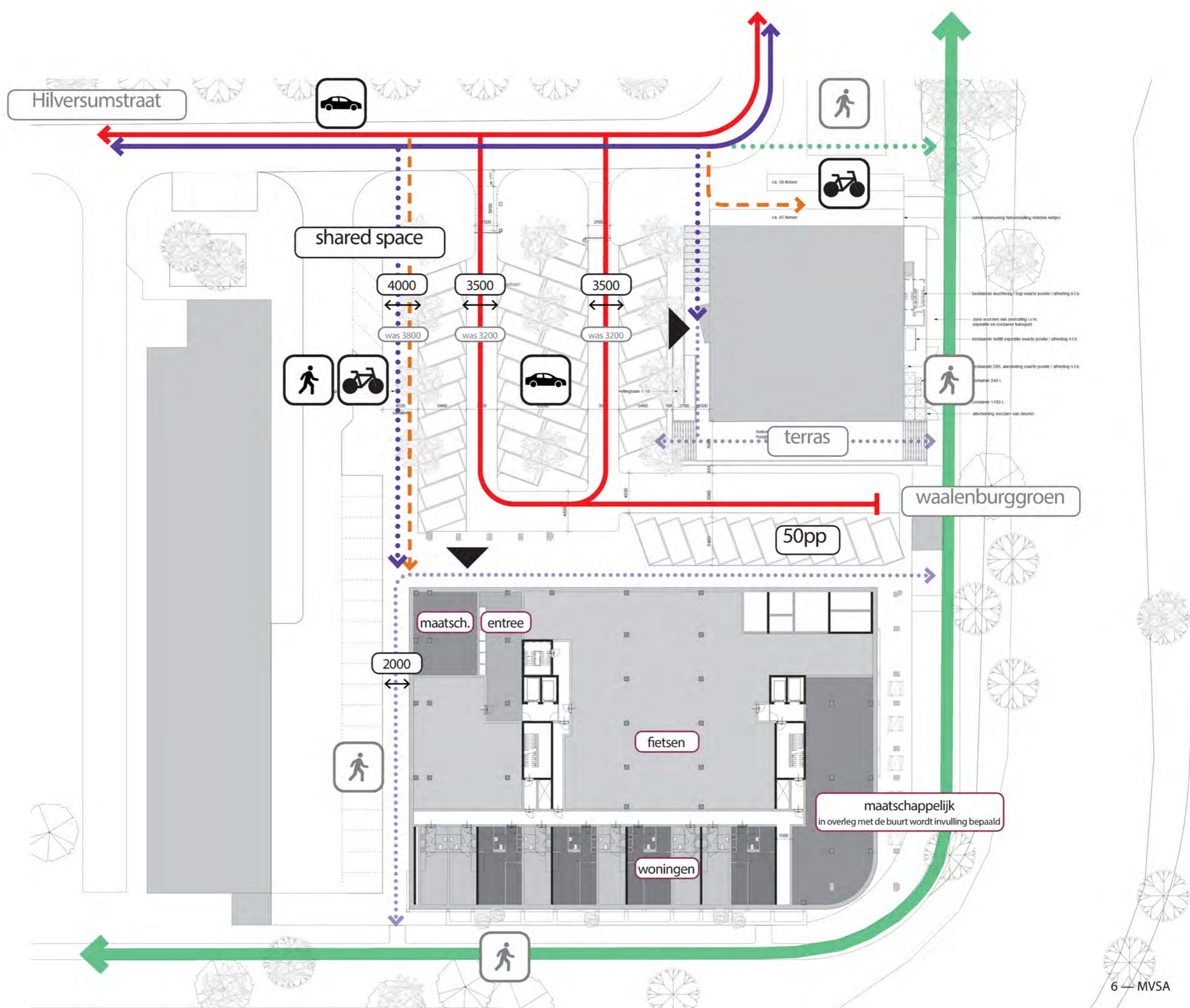
# MAAIVELD



waalenburggroen

waalenburggroen

# MAAIVELD



# DOELGROEP

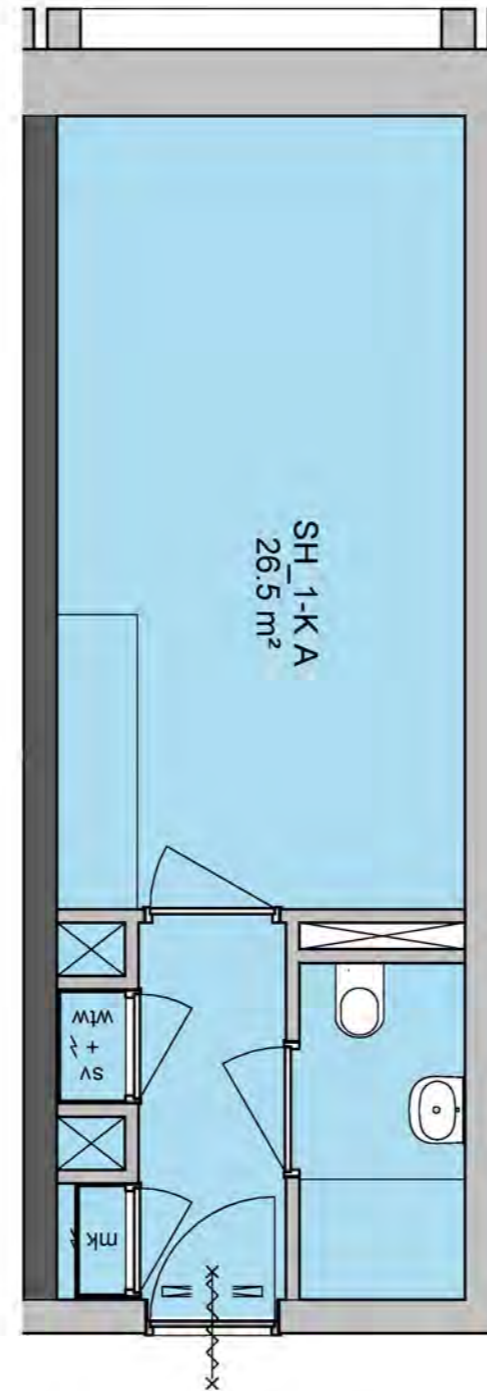
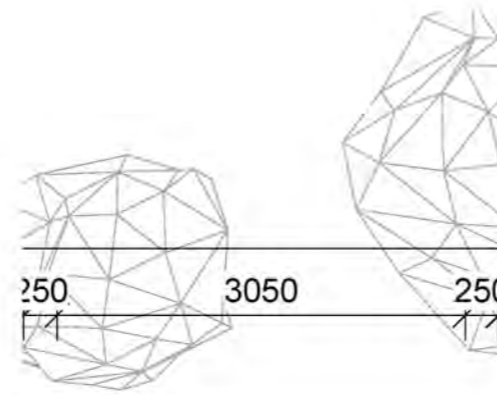


doelgroep starters & Young Professionals

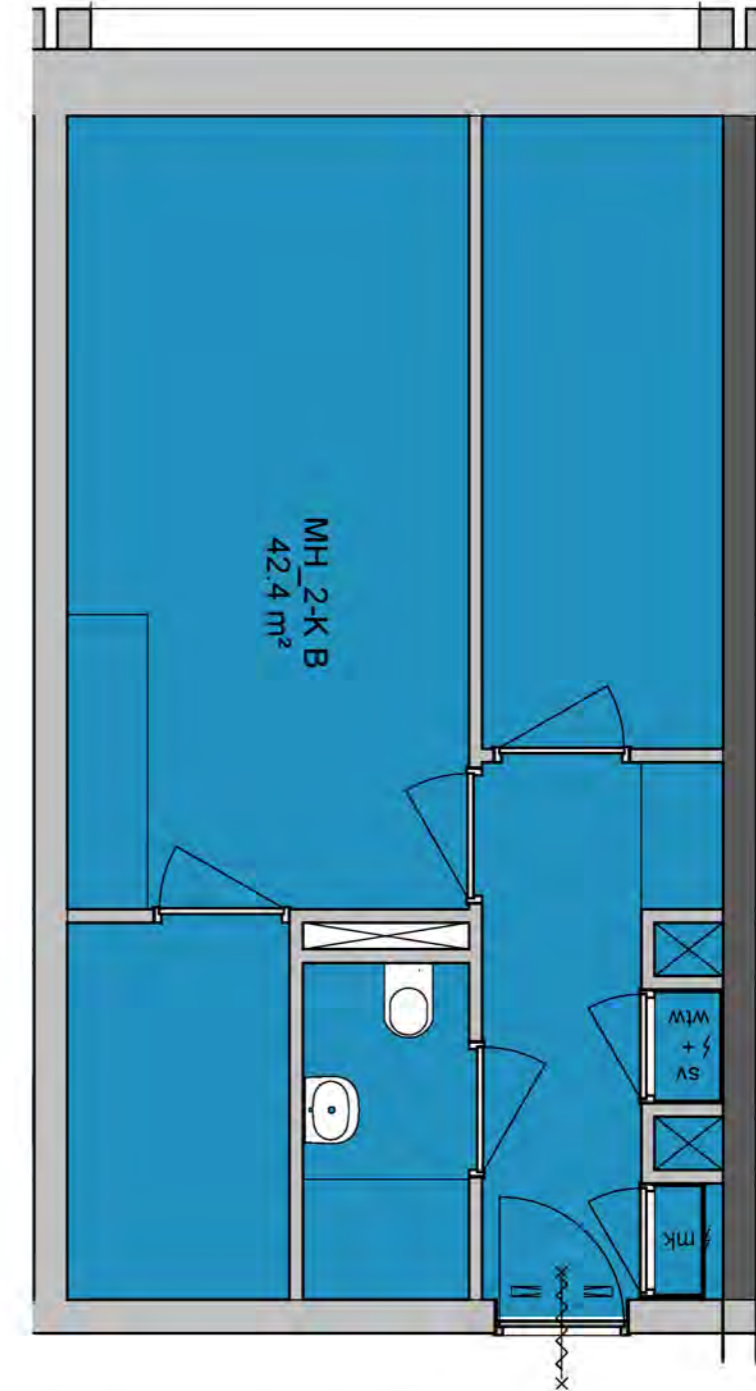
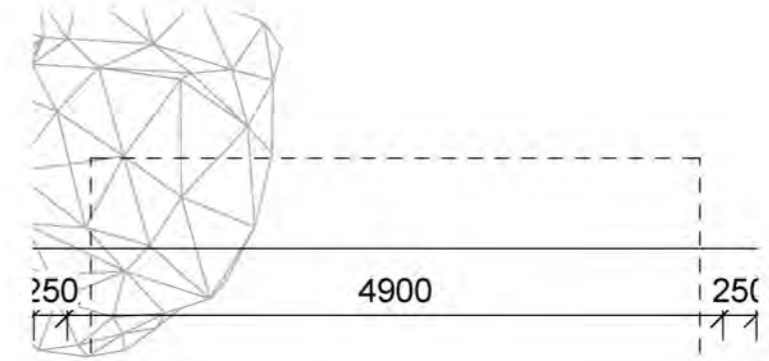
slimme fiets-/OV-oplossingen  
parkeernorm = 0 voor hele project

# WOONPROGRAMMA

240 STUDIO'S EN 212 TWEEKAMERAPPARTEMENTEN



studio min 26m2



2 kamerapp. min 40m2



# DOORSNEDE

## DWARSDOORSNEDE



MV  
SA

MVSA b.v.  
P.O. Box 2737  
1000 CS Amsterdam  
The Netherlands  
tel. +31 205319800  
office@mvsa.nl  
www.mvsa-architects.com

project  
Zuidlaap  
468

opdrachtgever  
doniger urban  
developments

onderwerp  
dwarsdoorsnede

datum  
17-10-2022

gewijzigd  
a.  
b.  
c.  
d.  
e.  
f.  
g.

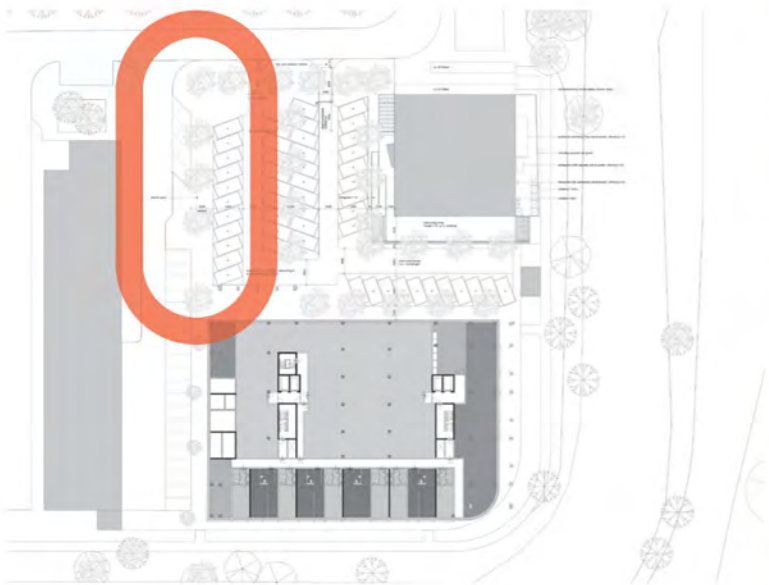
project  
468

onderdeel  
fase  
SO

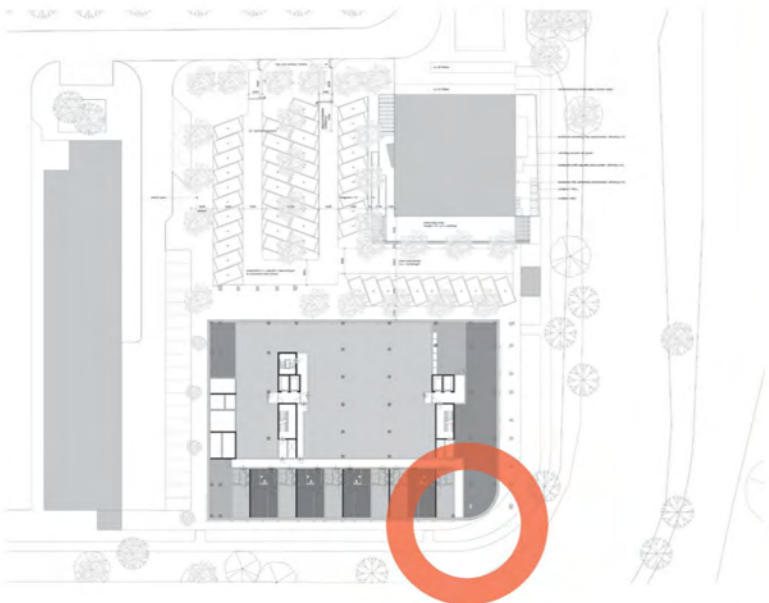
schaal  
1:200  
status  
StaVaZa

formaat  
A2  
tekeningnummer  
S-N-03-102H2V

CONCEPT



CONCEPT



# Zuidkaap



# Colofon

Zuidkaap

projectnumber: 468

MVSA bv

Postbus 2737  
1000 CS Amsterdam  
Nederland

Moermanskkade 600  
1013 BC Amsterdam  
Nederland

tel +31 20 531 98 00  
office@mvsa.nl  
www.mvsa-architects.com

MV :  
SA : :