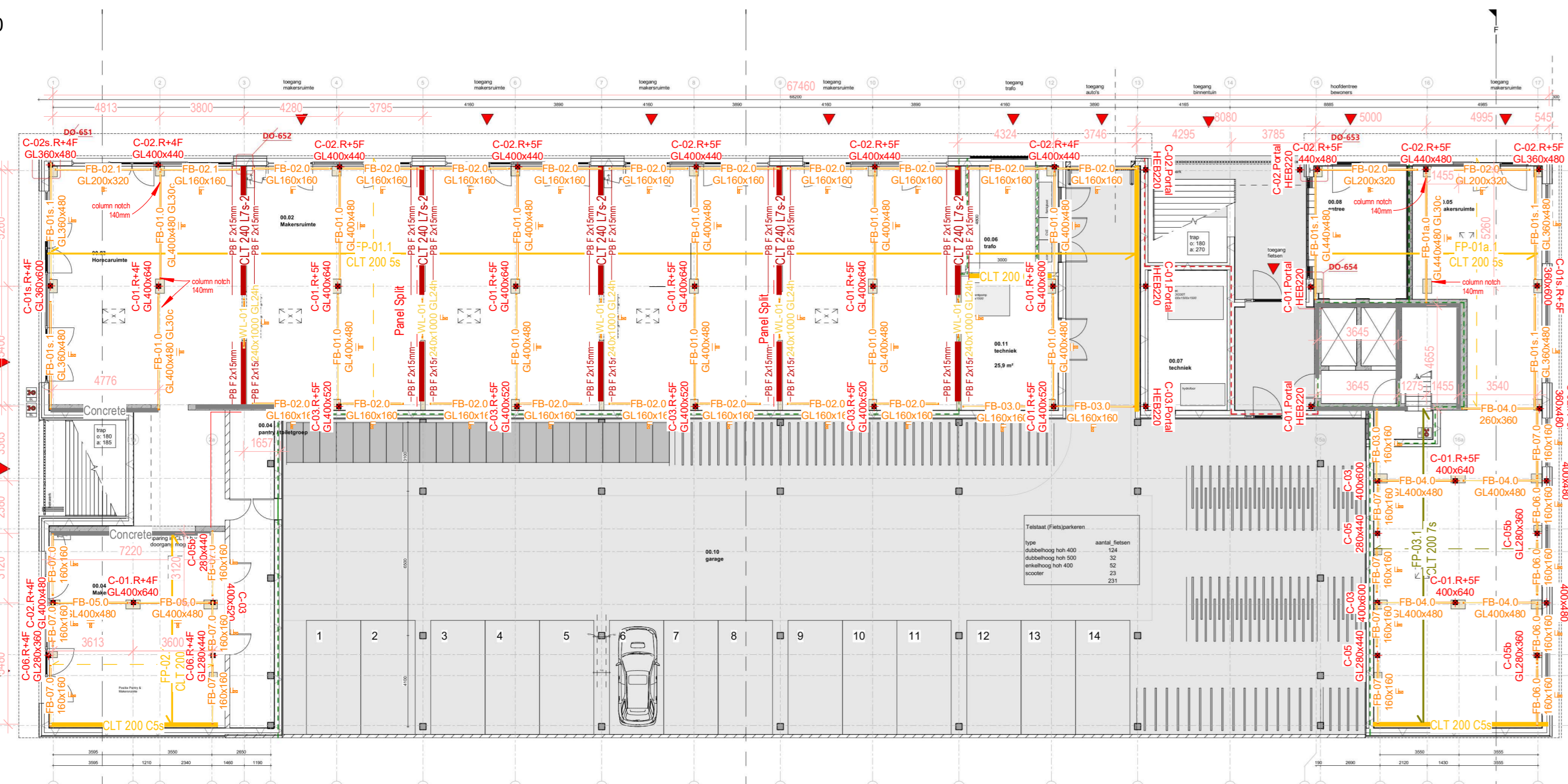
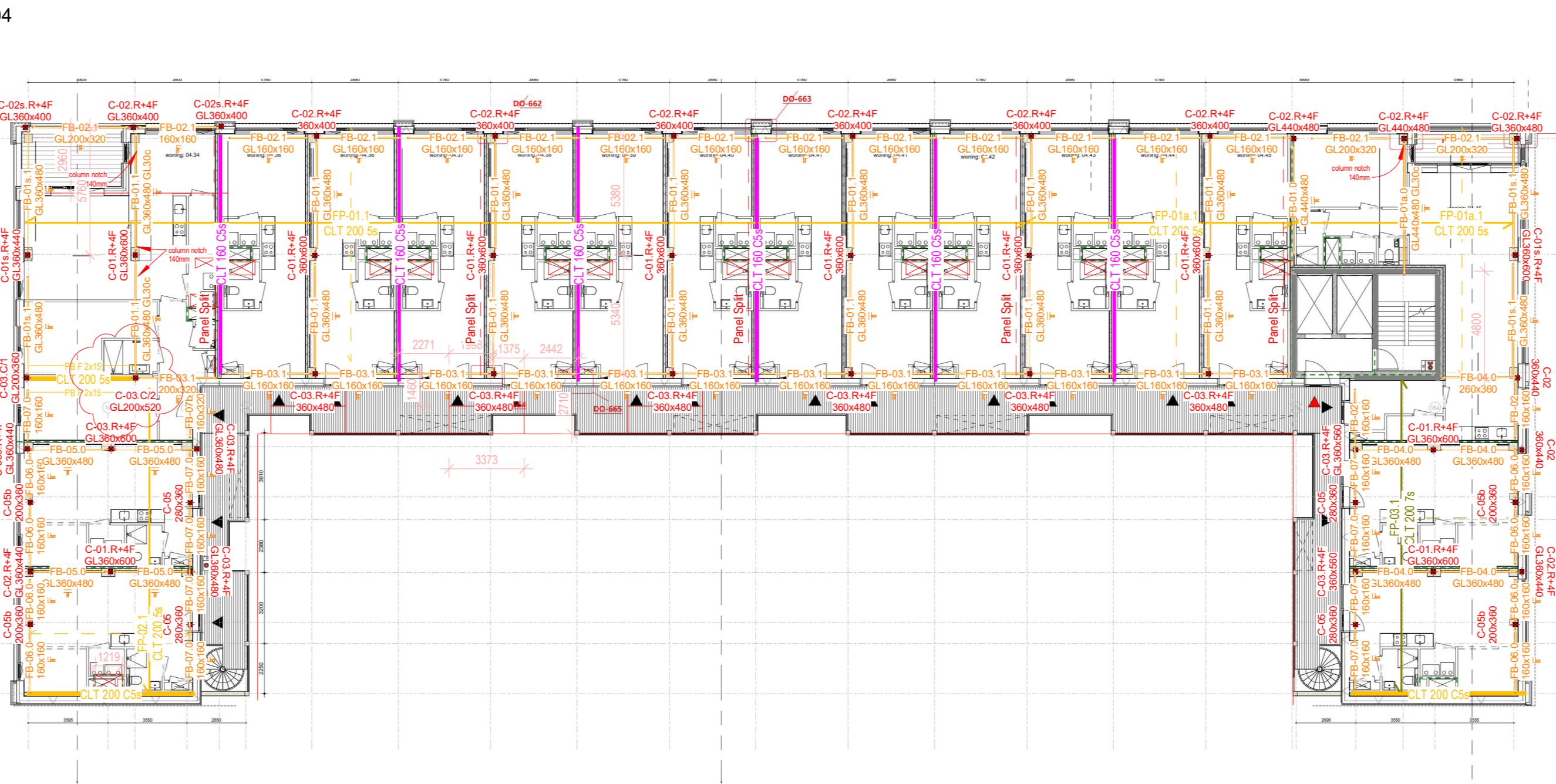


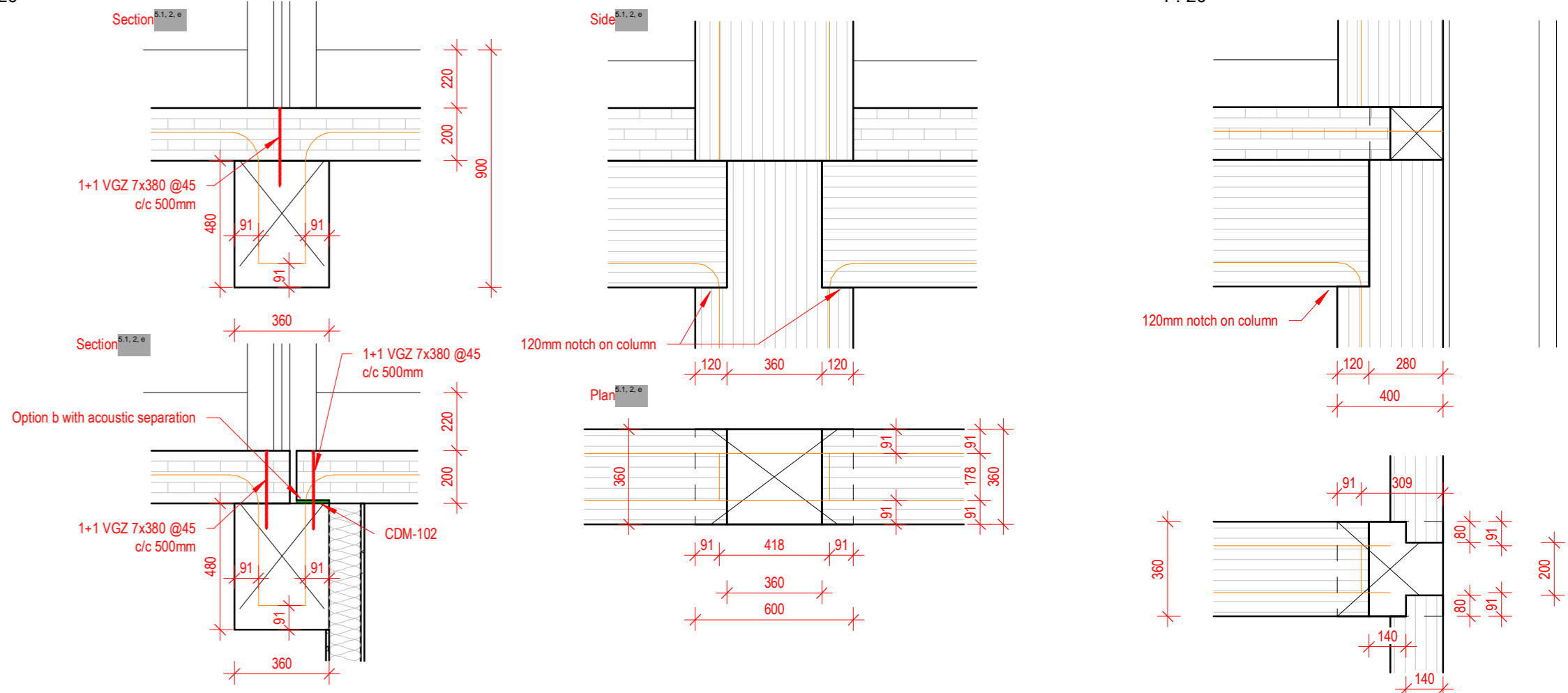
S1.2.00
1:200



S1.2.04
1:200

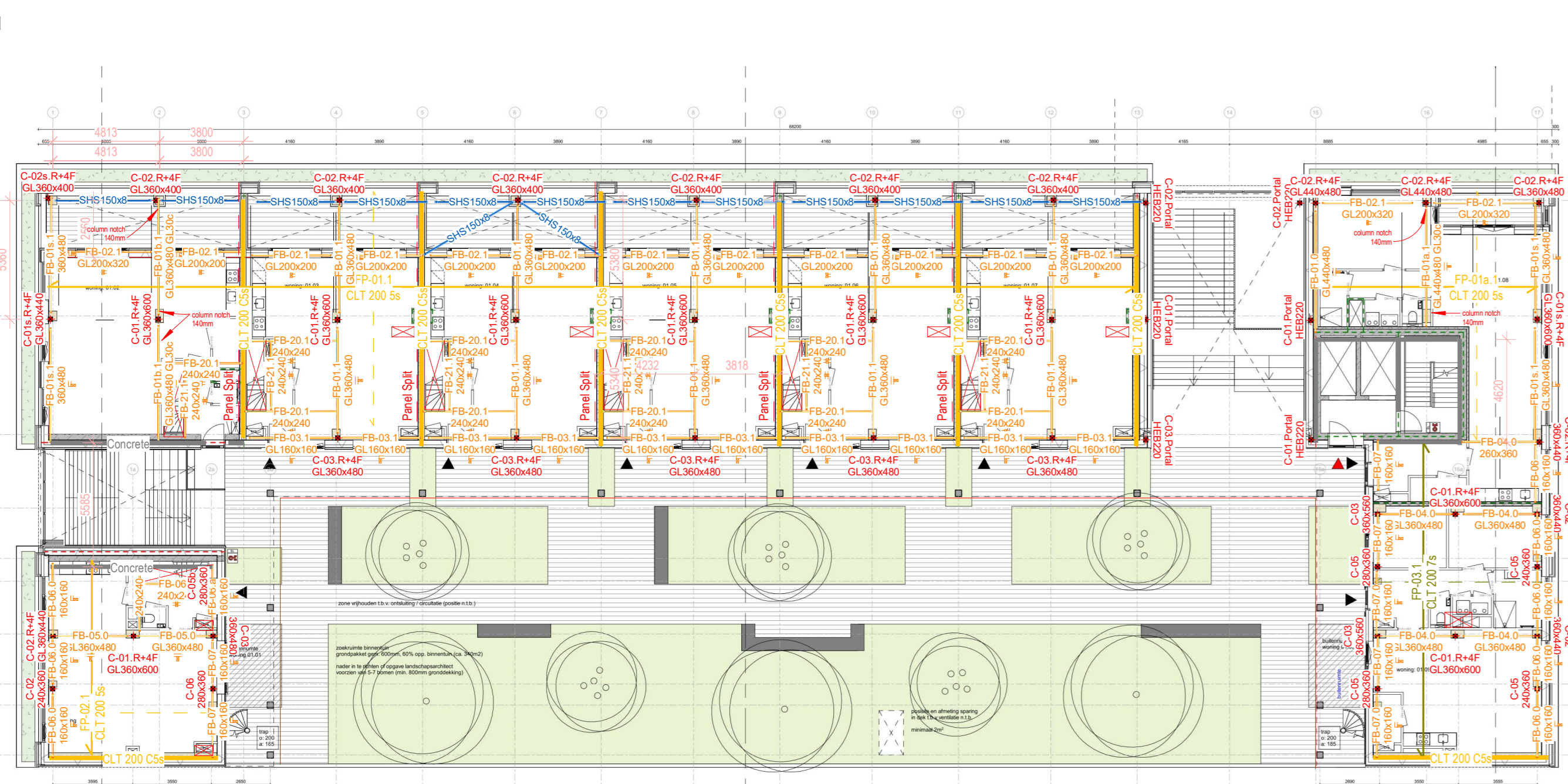


Det 01a -S01.1 - Typical Beam/Column Detail
1:20

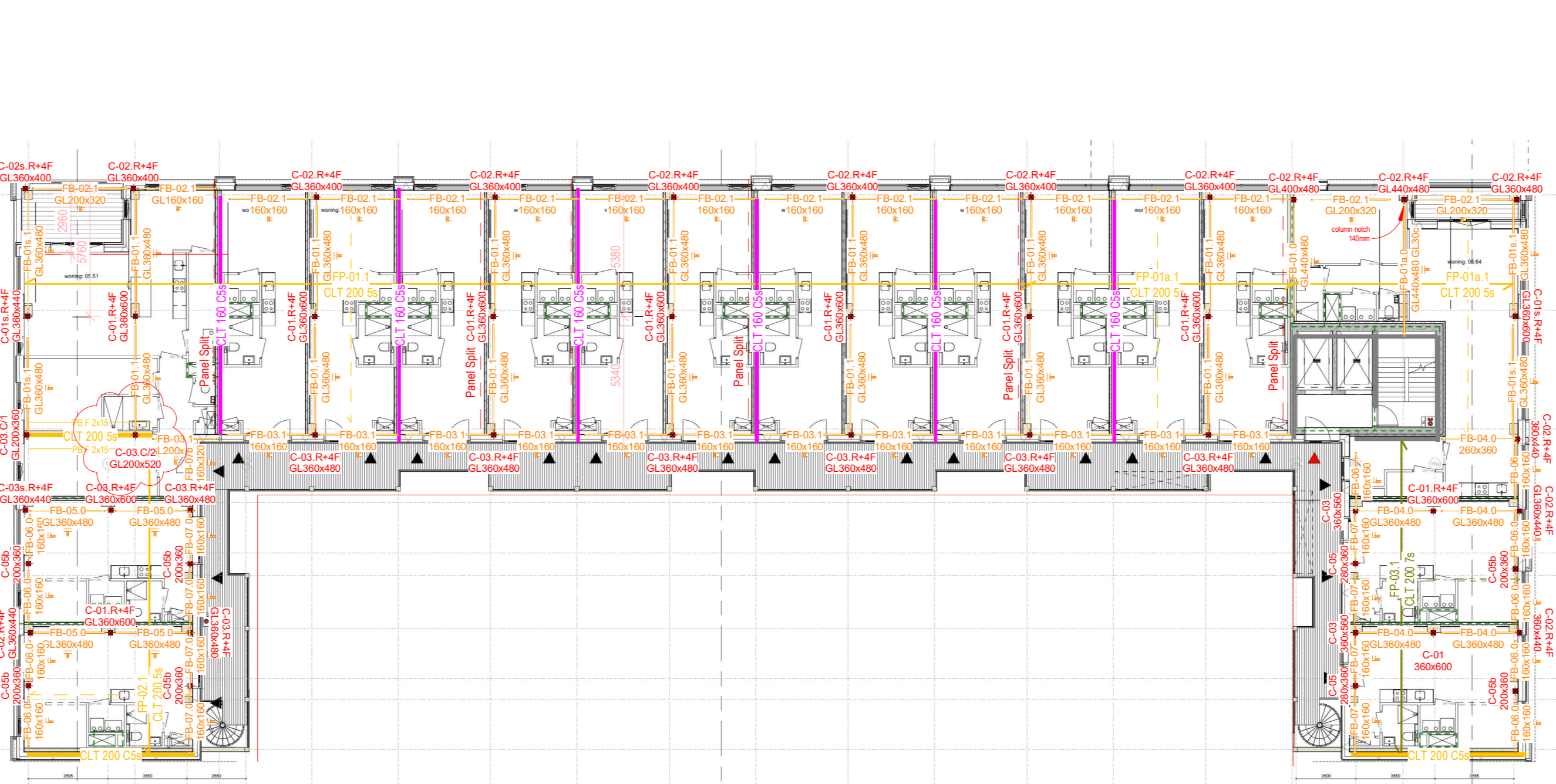


Det 01a -S01.1 - Typical Beam/Edge Beam to Column Detail
1:20

S1.2.01
1:200



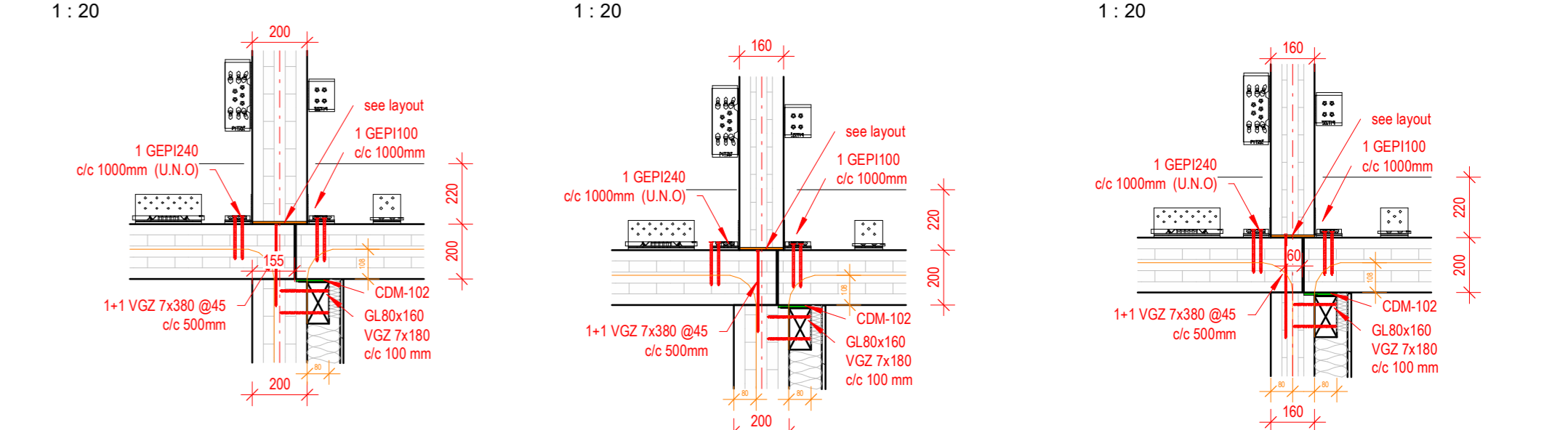
S1.2.05
1:200



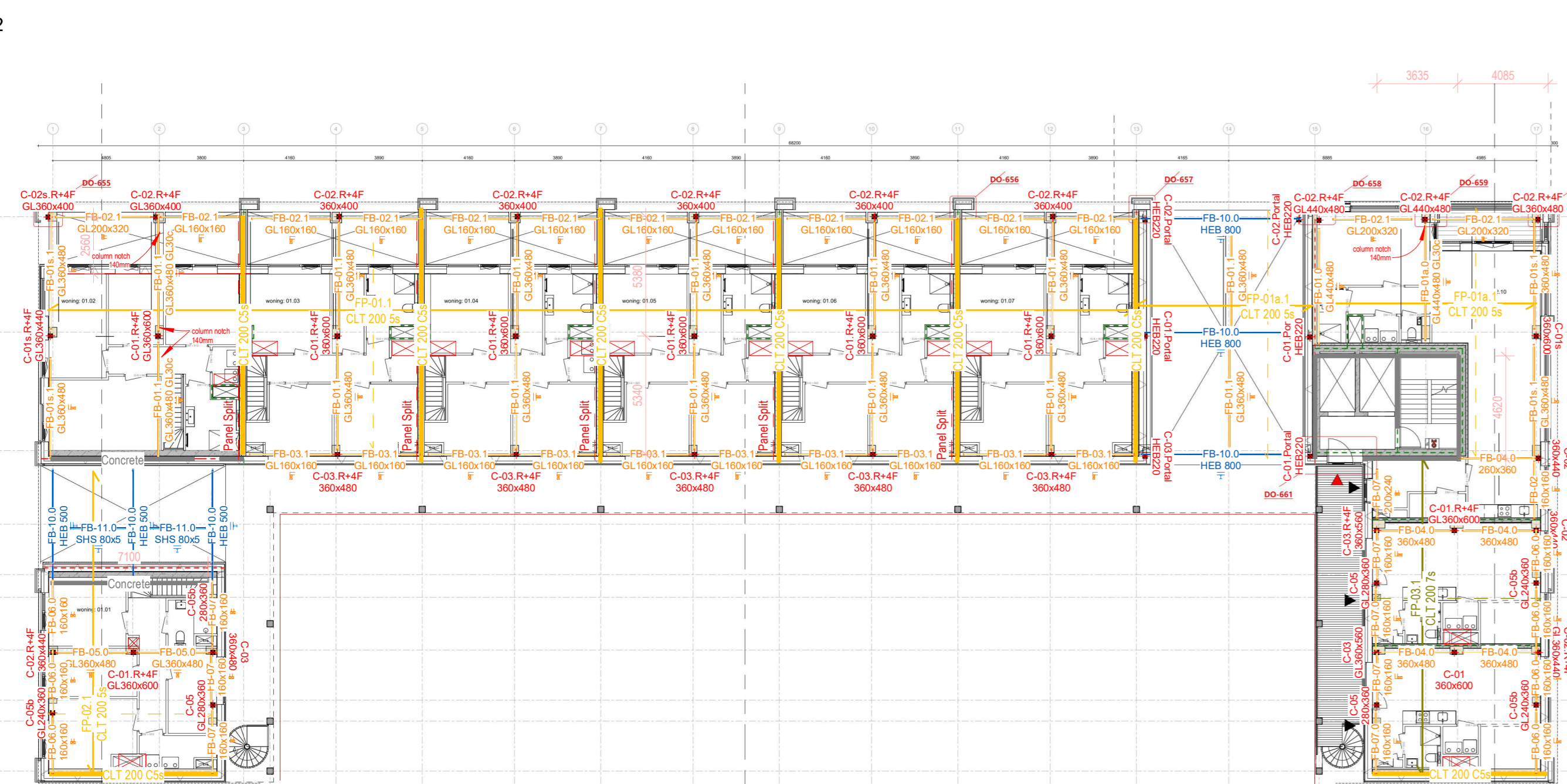
Det 02a -S01.1 - Typical CLT Floor to CLT wall
Detail CLT200-CLT200
1:20

Det 02b -S01.1 - Typical CLT Floor to CLT wall
Detail CLT200-CLT160
1:20

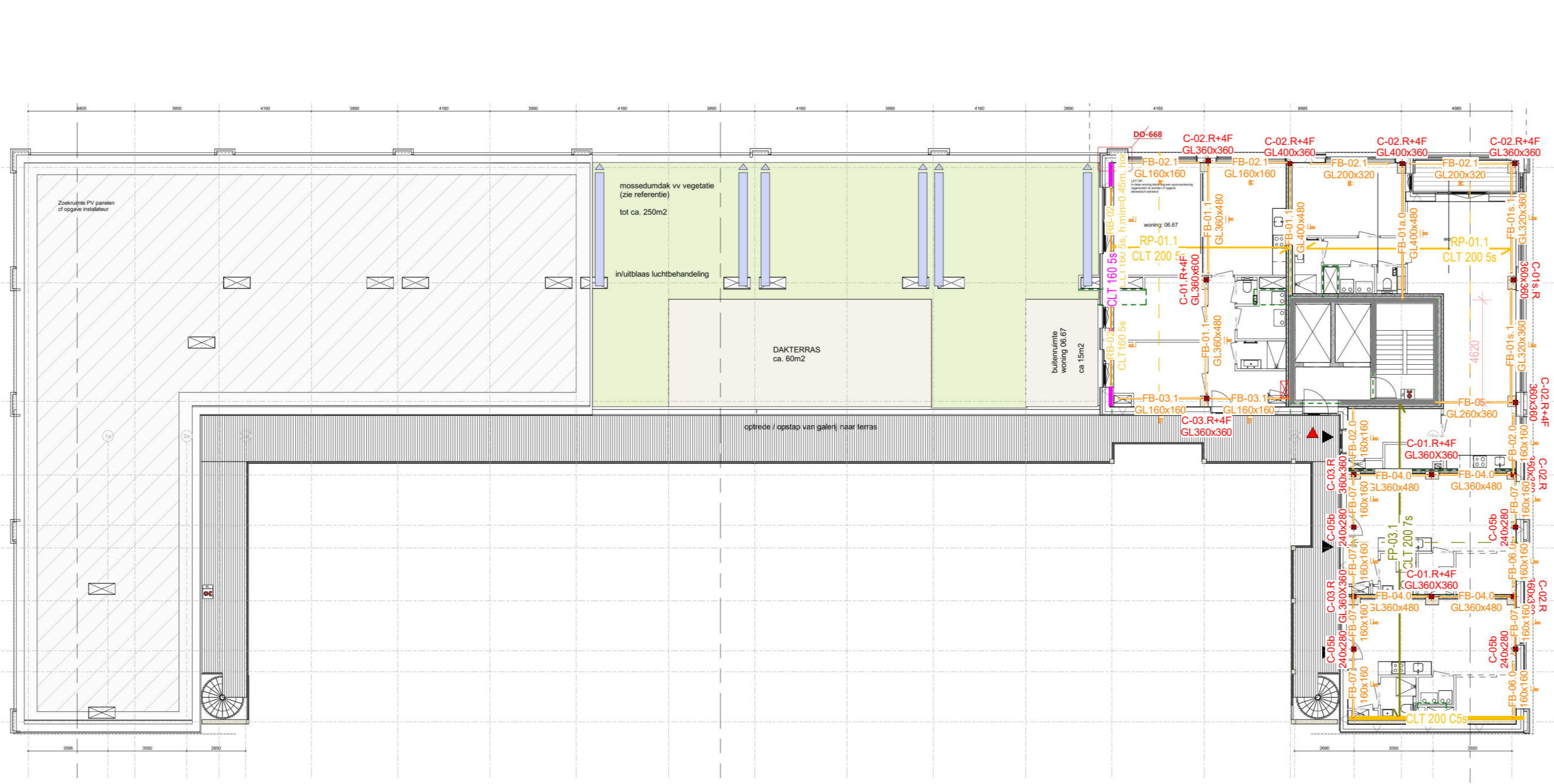
Det 02c -S01.1 - Typical CLT Floor to CLT wall
Detail CLT160-CLT160
1:20



S1.2.02
1:200

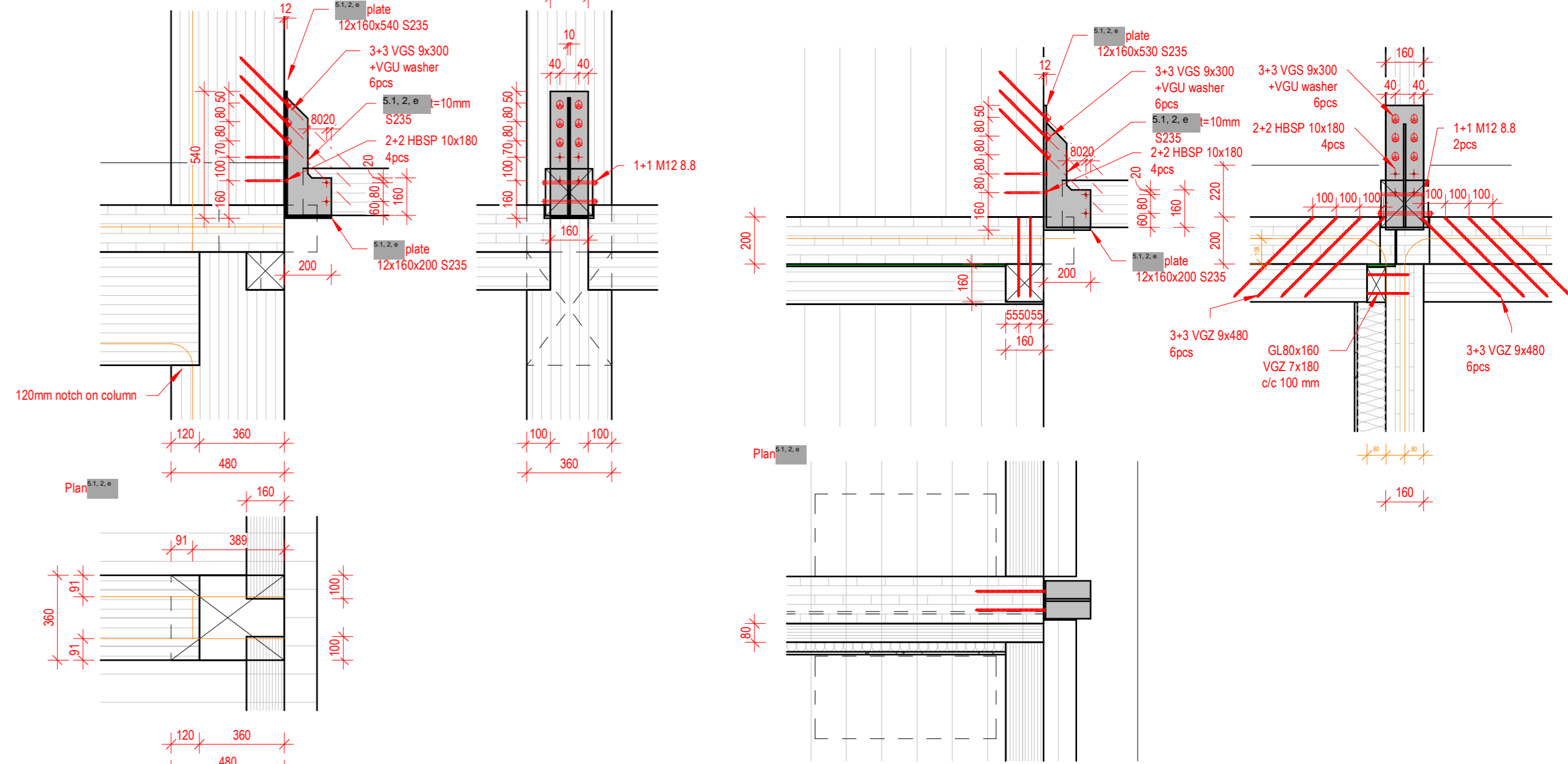


S1.2.06
1:200

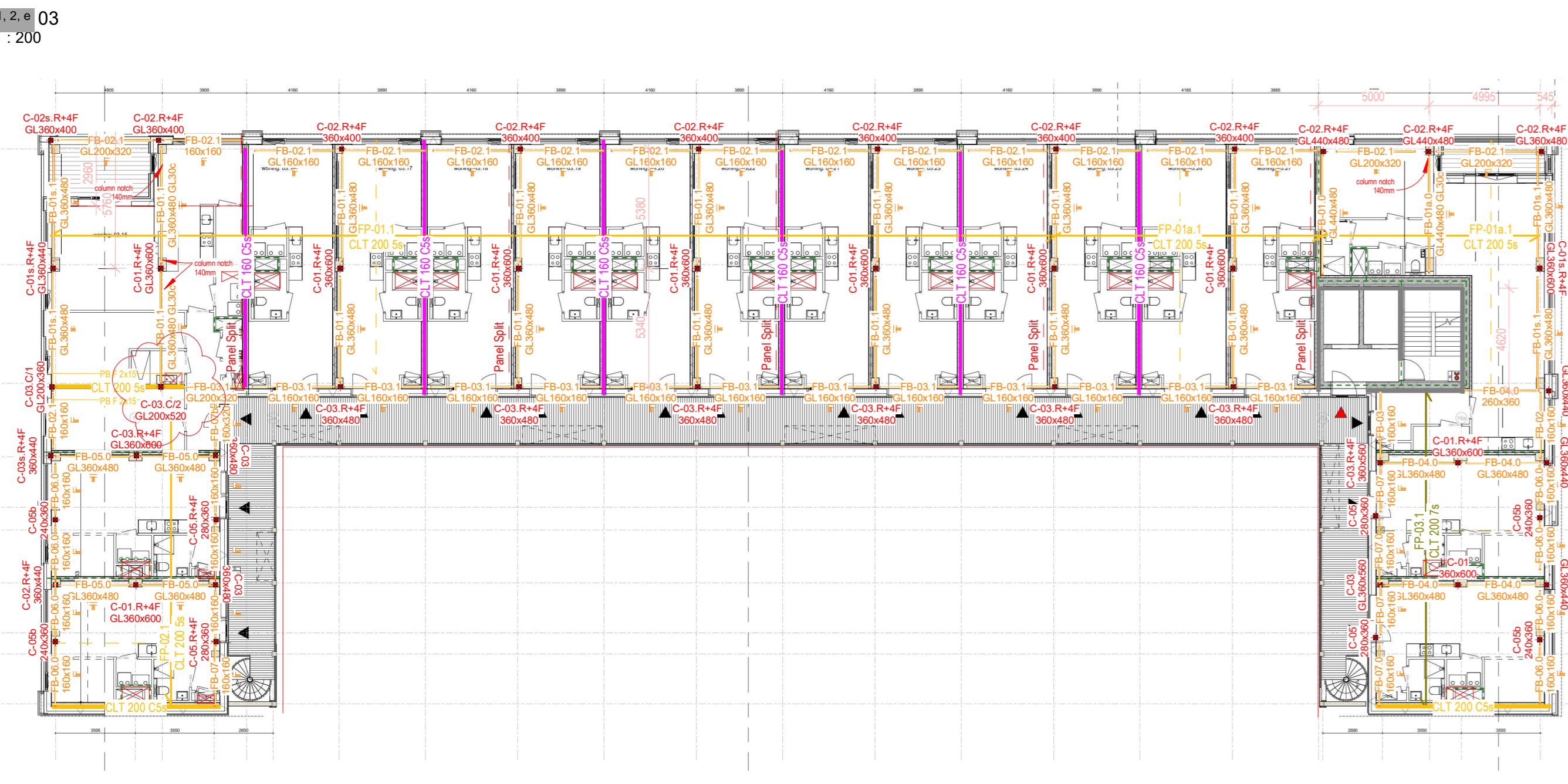


Det 03a -S01.1 - Typical Edge Beam Detail
1:20

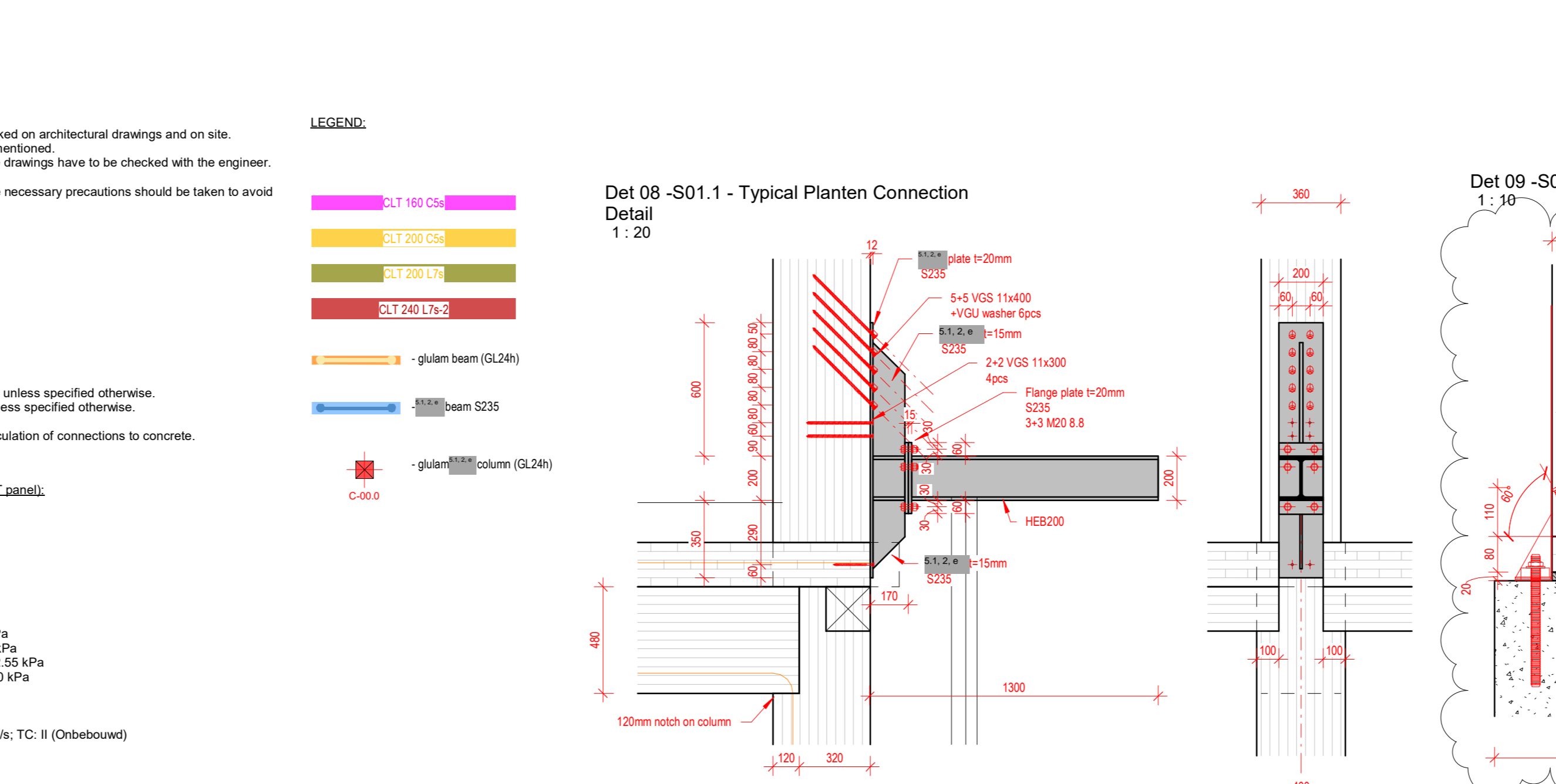
Det 03b -S01.1 - Typical Edge Beam Detail
1:20



S1.2.03
1:200



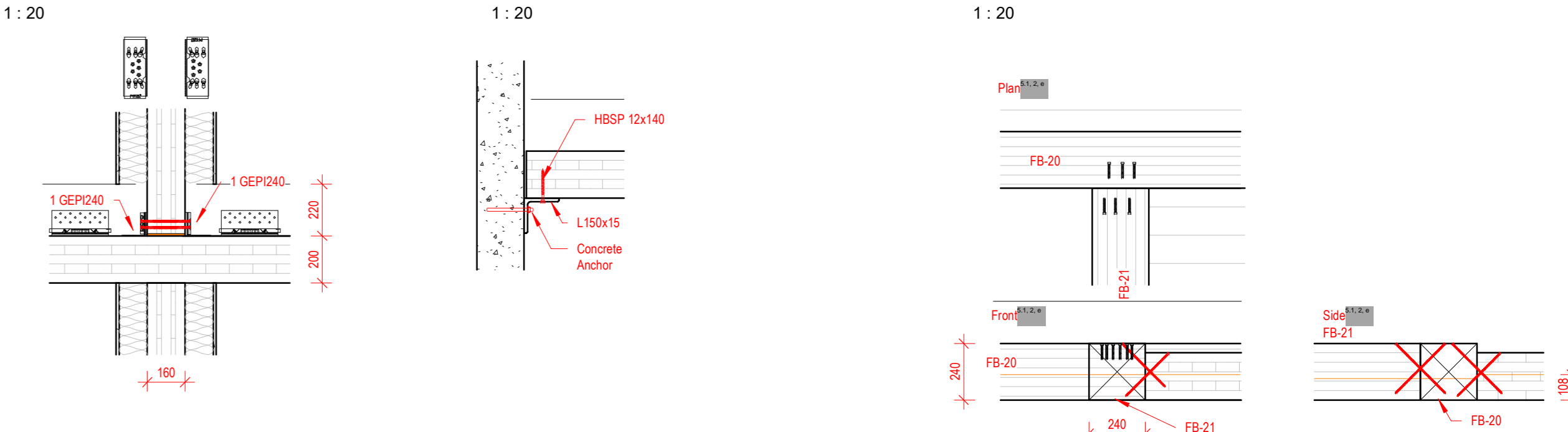
S1.2.03
1:200



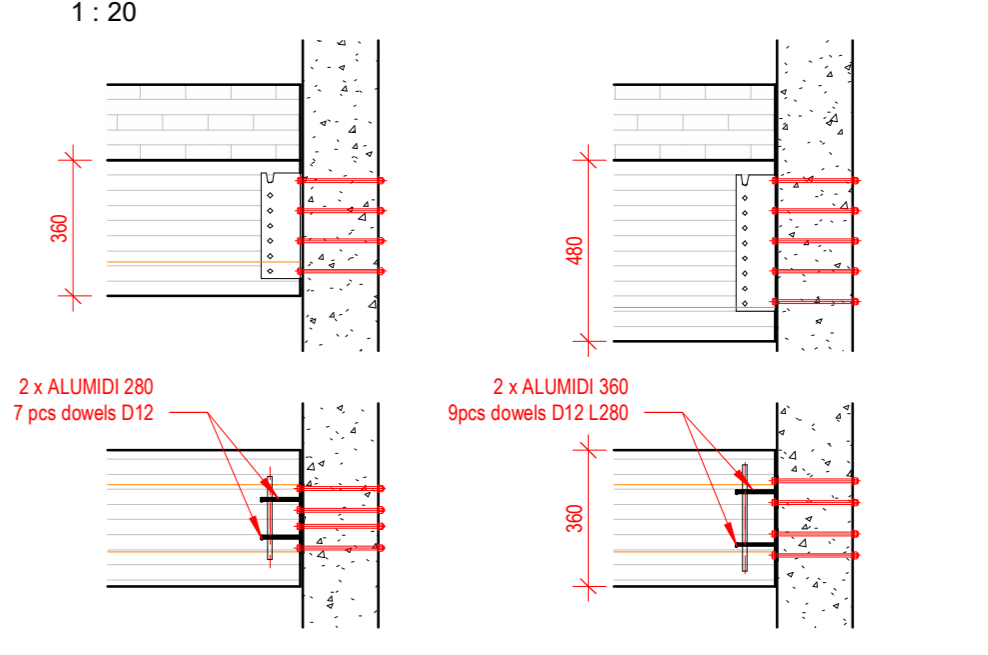
Det 04 -S01.1 - Typical CLT Floor to CLT wall
Detail
1:20

Det 05 -S01.1 - Typical CLT Floor to Concrete
wall Detail
1:20

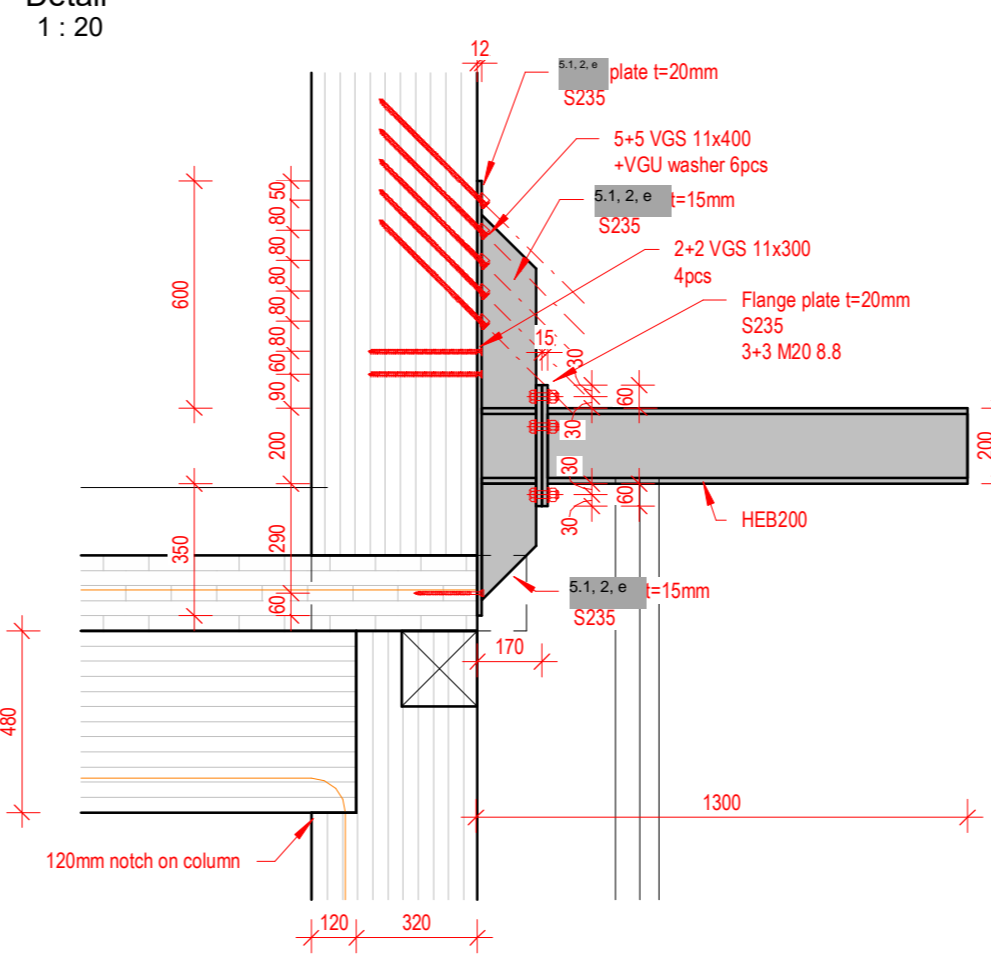
Det 06 -S01.1 - Typical Connection Detail
around stair void
1:20



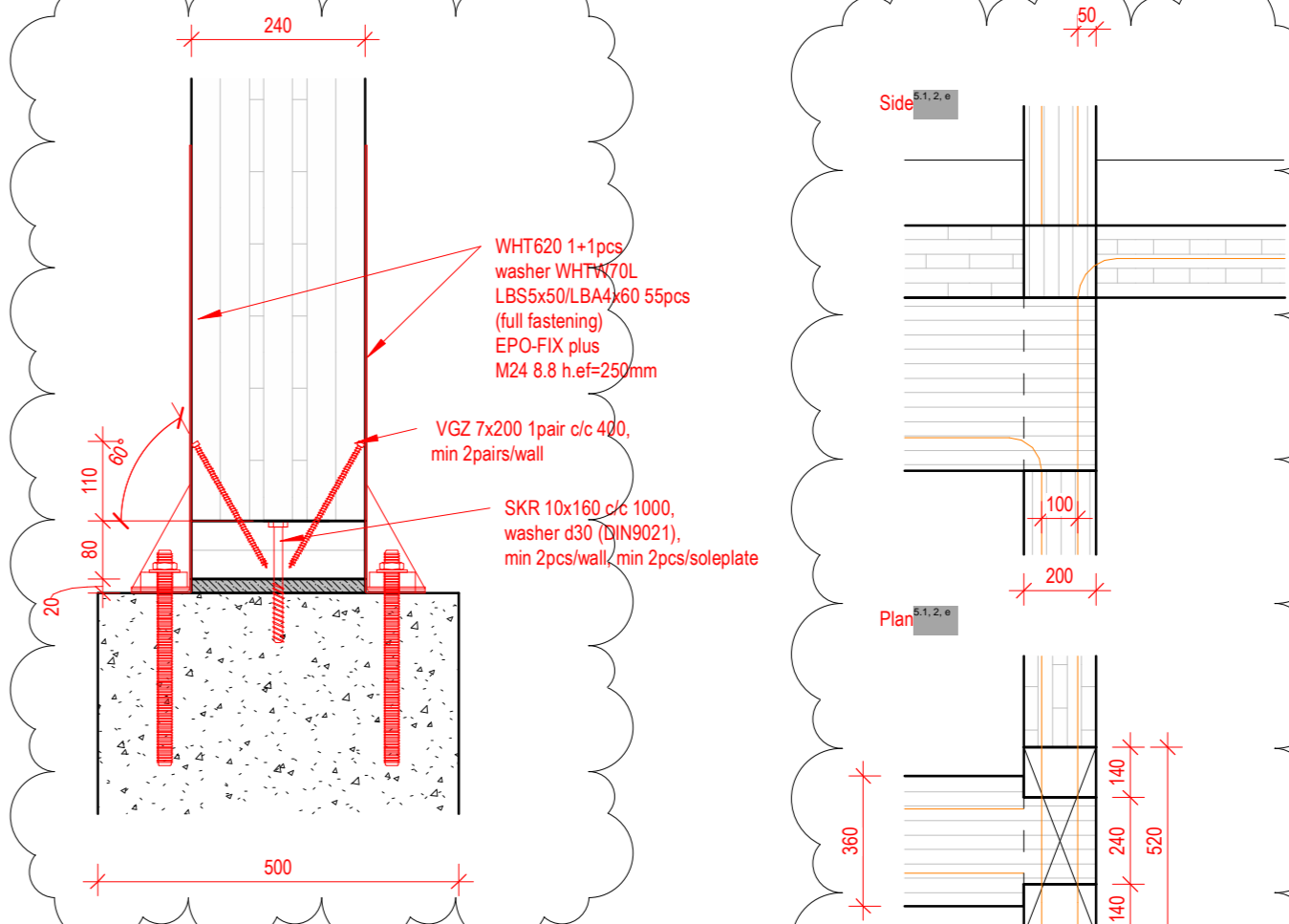
Det 07 -S01.1 - Typical Detail Beam to
Concrete wall
1:20



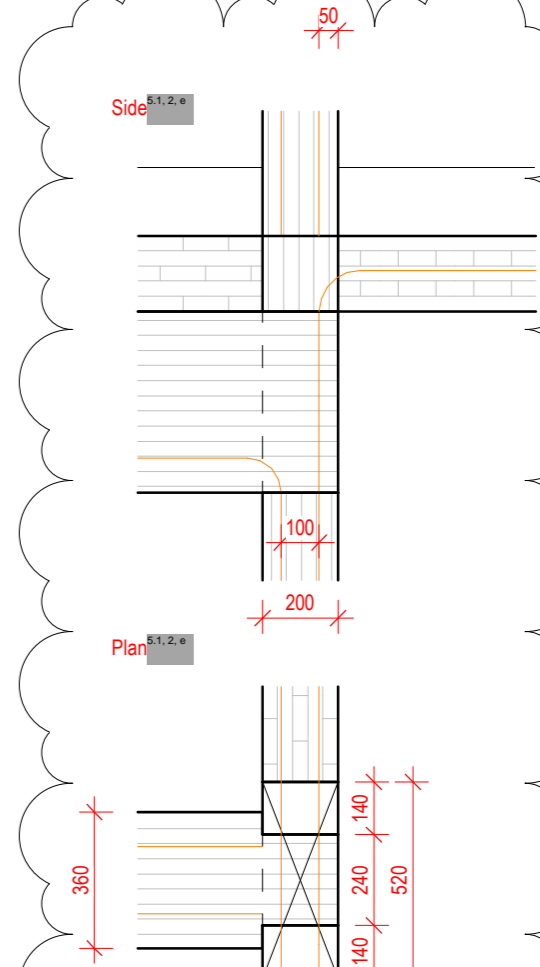
Det 08 -S01.1 - Typical Planter Connection
Detail
1:20



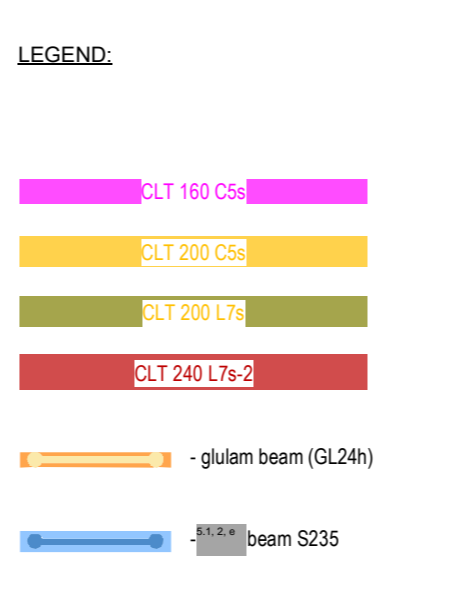
Det 09 -S01.1 - Typical Foundation Detail
1:20



Det 10 -S01.1 - C-03 C2 to FB-01.1
1:20



- GENERAL**
- Dimension to be checked on architectural drawings and on site.
 - Differences have to be mentioned.
 - Any deviation to these drawings have to be checked with the engineer.
 - Dimensions in mm.
 - In case a flat roof the necessary precautions should be taken to avoid accumulation of water.
 - Fire resistance RT20.
- MATERIALS**
- Glulam timber:
 - CLT
 - C24
 - Glued edges.
 - Steel:
 - Roofs: strength class 8.8, unless specified otherwise.
 - Welds: at least 6mm, unless specified otherwise.
 - Concrete:
 - C20/25 assumed for calculation of connections to concrete.
- LOADS**
- Element loads (incl. CLT panels):
- G.K. floor = 3.4 kPa
 - G.K. balcony = 1.5 kPa
 - G.K. roof = 2.5 kPa
 - G.K. staircase = 2.0 kPa
 - G.K. facade = 1.0 kPa
 - G.K. planter = 100kNm
- Variable loads:
- N. Roof (cat. AI) = 2.55 kPa
 - N. Rainwater (cat. AI) = 3.0 kPa
 - N. Terrace (cat. AI) = 3.00 kPa
 - N. Roof Terrace (cat. AI) = 2.55 kPa
 - N. maintenance (cat. II) = 1.0 kPa
 - N. snow = 0.56 kPa
- WIND**
- Basic velocity speed 27 m/s; TC II (Innbouwd)
- FIN**
- Ceiling elements exposed
CLT wall protected with 125F, unless noted on plans
Glulam columns exposed



CLT-S NV
 Nijverheidsstraat 13
 2260 Gevel-Westerlo
 +32 (0) 14 57 49 61
 www.clt-s.be

ENGINEERED
WOOD CONSTRUCTION
CLT-S

LIS-KOF_2D

Projectfase: pre-study
Projectnummer: NL23005

PLANNUMBER: **S01.1**

Elements Design
Levels 00-06

Client: Architect
Contractor: Structural engineer

Scale	As indicated	Modeler	Date	2023.09.28
Rev Number	Revision 8	Rev Description		Rev Date
0.4	Updated Gallery beam			2023.04.20
0.5	Issue 79/80			2023.06.09
0.6	Issue 79/80			2023.08.01
0.7	Beam 6m			2023.08.07
0.8	Updates acc to bin360 comments			2023.09.21
0.9	updated C-03 C2, foundation detail			2023.09.28