

Kolom in as E4

K 225; QR 40

803-105

$$P \text{ zie berekening E4 op beg. grond} = 98865 \text{ Kg}$$

$$T_A \text{ reactie van balk str. 4} = 5395 \text{ Kg}$$

$$N = 104260 \text{ Kg}$$

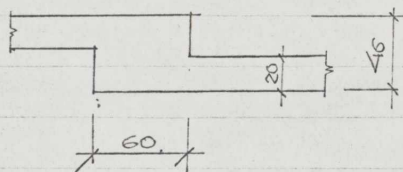
Kolom berekend met inkleminingsmoment

+ q.v. balk 4

$$M_A = \frac{1}{12} \times 670 \times 5,31^2 + \frac{5}{96} \times 4620 \times 5,31^2 = 8195 \text{ Kgm}$$

$$h_c = 2,80 \times 0,7 = 1,96 \text{ m}$$

afm. kolom.



$$B = (60 \times 46) \times 1,3 = 5980 \text{ cm}^2$$

1,3 - toeslag voor wand.

$$G_w = \frac{104260}{5980} = 17,45 \text{ Kg/cm}^2$$

$$e_o = \frac{819500}{104260} = 7,87 \text{ cm}$$

$$\frac{e_o}{h_t} = \frac{7,87}{46} = 0,172$$

$$\frac{h_c}{h_t} = \frac{1,96}{46} = 4,27$$