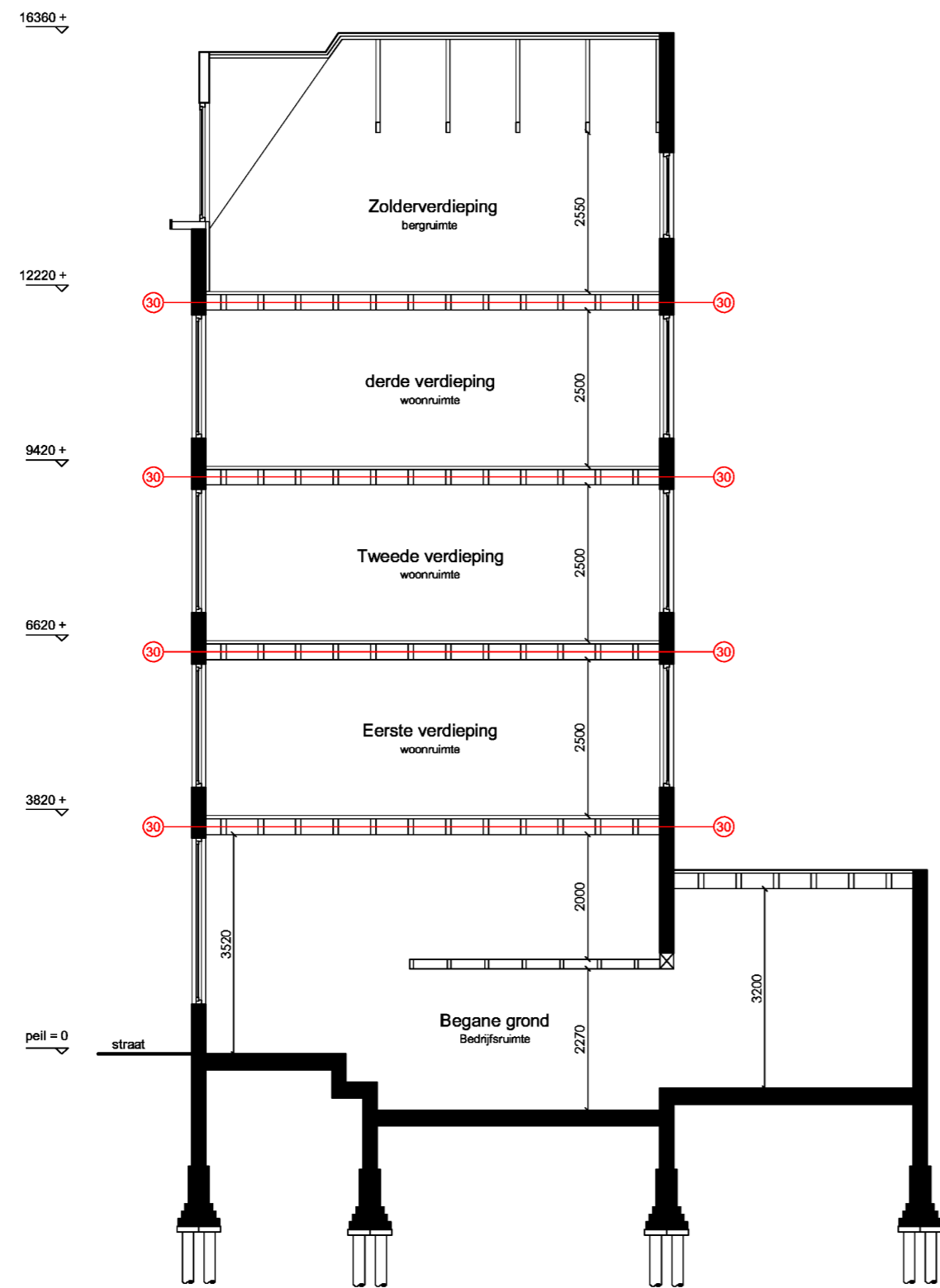
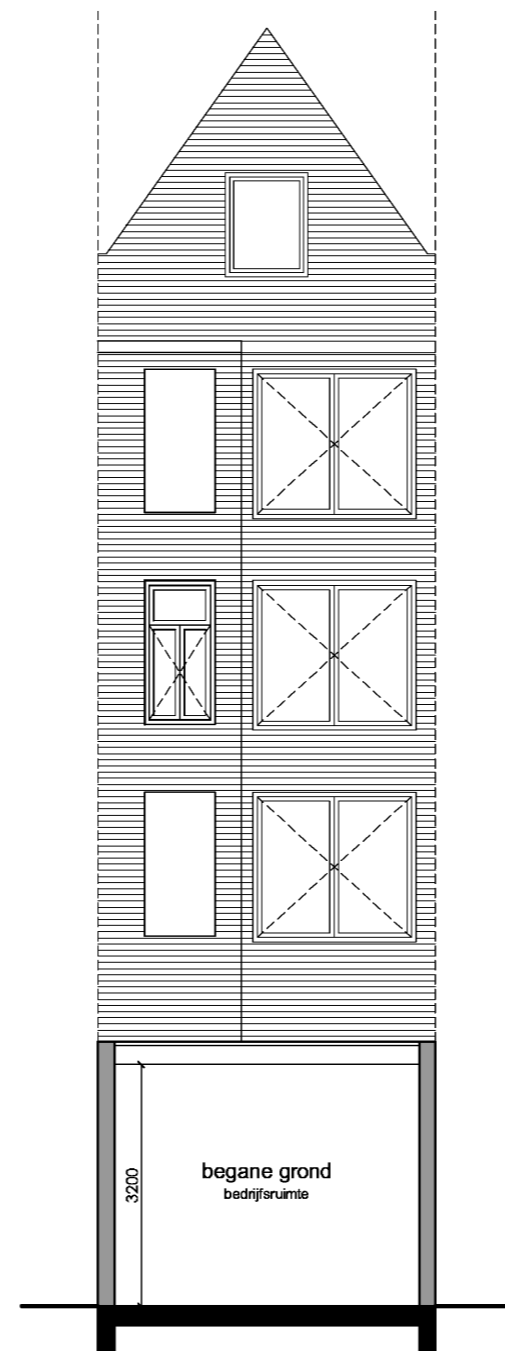


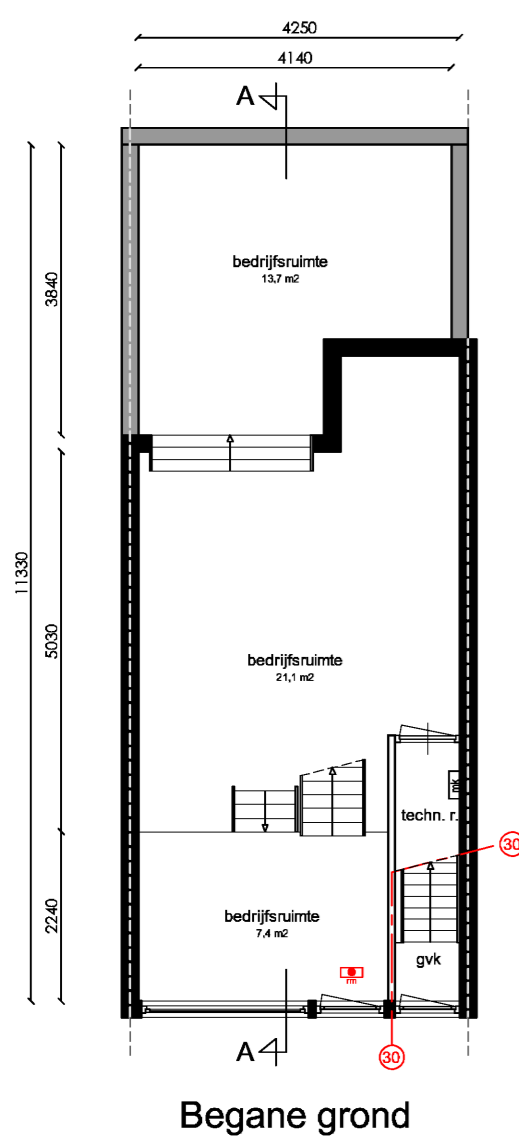
Voorgevel



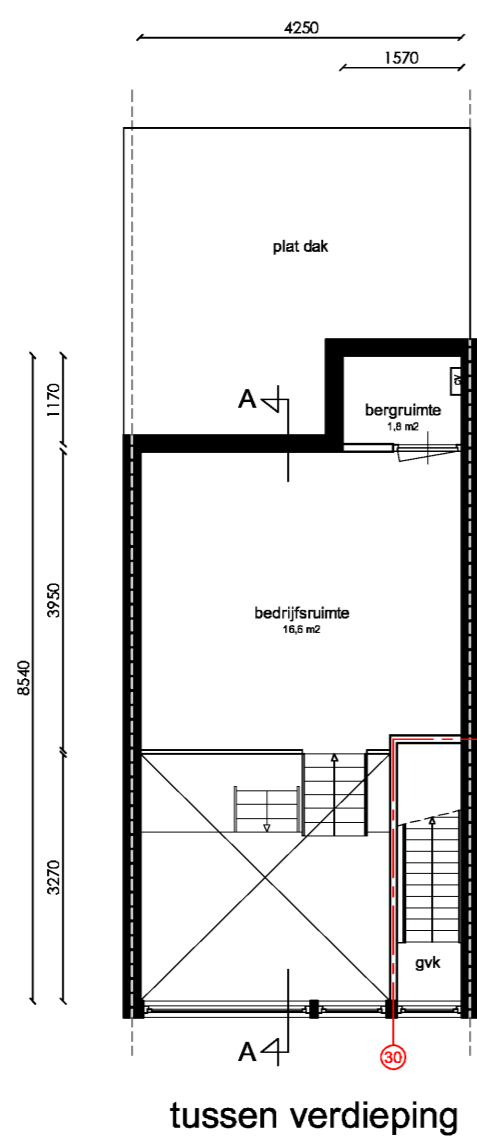
Doorsnede A-A



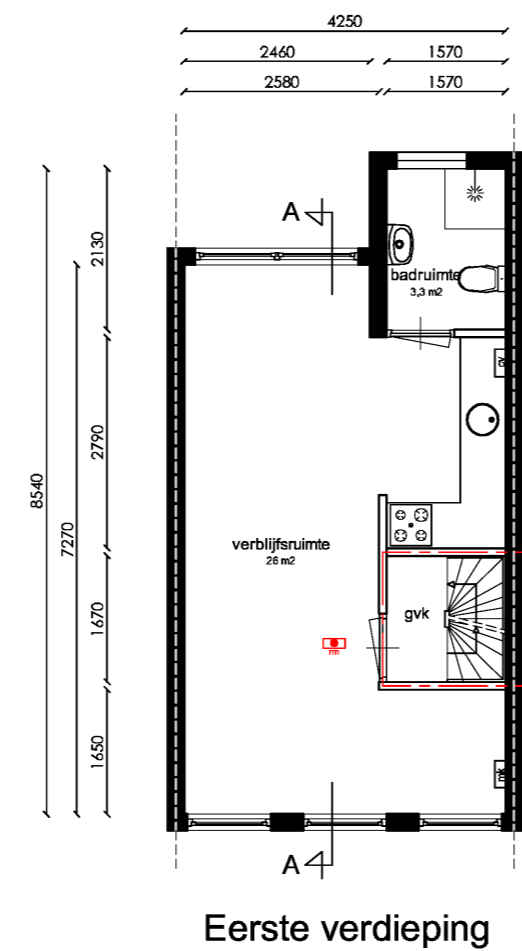
Achtergevel



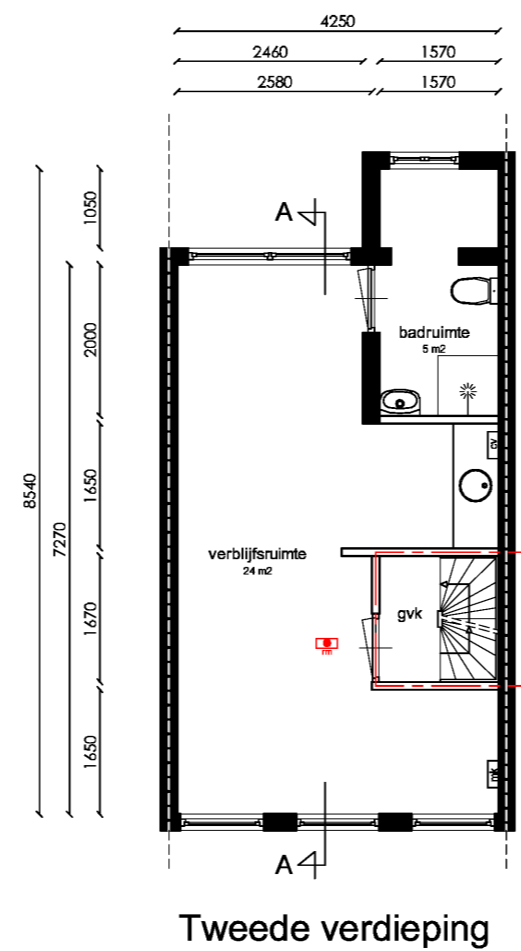
Begane grond



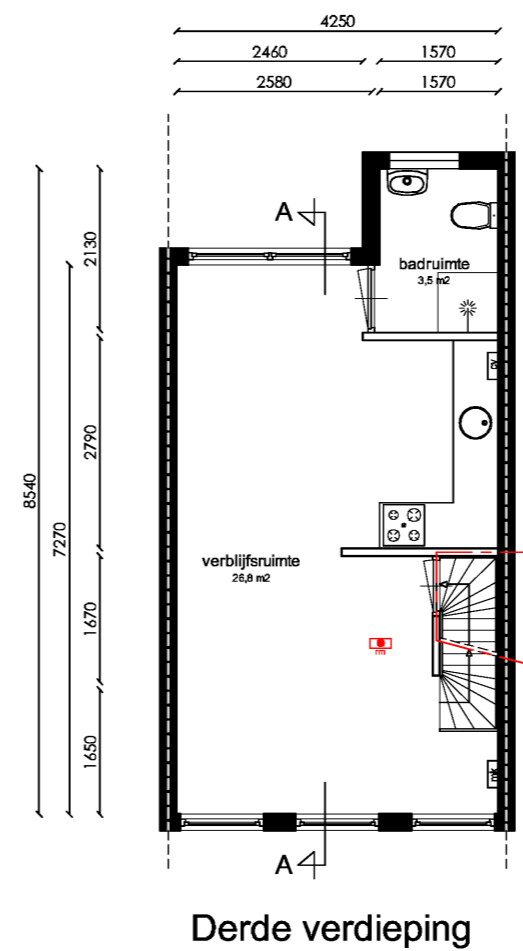
tussen verdieping



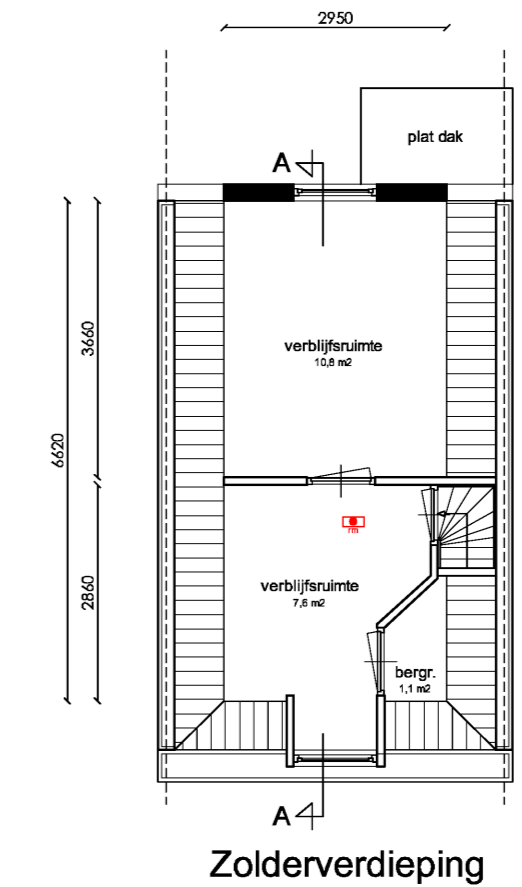
Eerste verdieping



Tweede verdieping

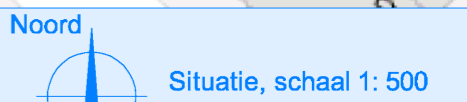


Derde verdieping



Zolderverdieping

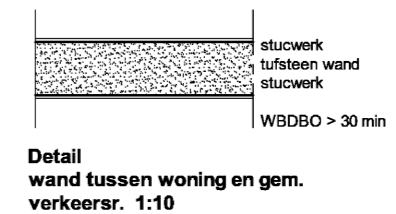
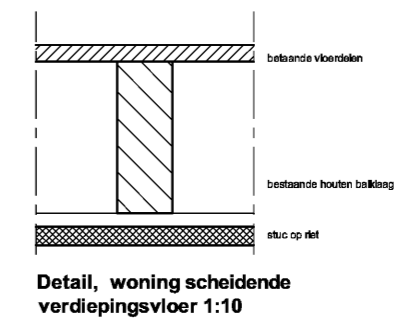
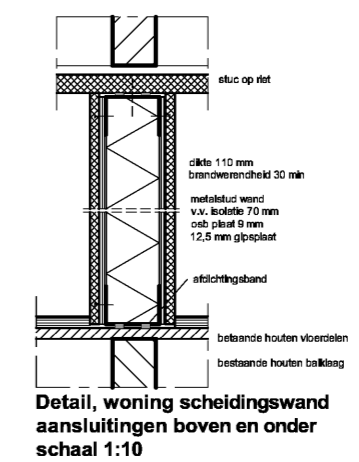
RENOVOOI		
afkorting	symbool	omschrijving
-	—	constructieve muren
-	—	lichte scheidingswand
sl	×	standleiding
rg	○ ^m	rookgasafvoer & luchttoevoer
mv	+	mechanische ventilatie
cv	□	cv-ketel
gz	□	geizer
mk	□	meterkast
gas	□	gasmeter
hwa	○ ^{hwa}	hemelwaterafvoer
wm	□	wasmachine
wd	□	wasdroger
kk	□	koelkast
kt	□	kooktoestel
vk	-	verkeersruimte
gvk	-	gemeenschappelijke verkeersruimte
vr	-	verblijfsruimte
rm	□	rookmelder op lichtnet volgens NEN 2555
WBDBO	⊙	weerstand branddoorslag en brandoverslag in minuten



Project gegevens:

Stratnaam: 5.1, 2, e
 Postcode: 1018 PT
 Gemeente: Amsterdam
 Gebied: Singelgrachtzone

Monument: Nee
 Orde Pand: Orde 2



5.1, 2, e 5.1, 2, e

Amsterdam

Onderwerp: Bestaande toestand

Fase: Splittingsaanvraag

Datum: 18-05-2022

Gewijzigd: 08-06-2022

Schaal: 1: 100

Werknummer: 1187

Tek. nr:

B.01

