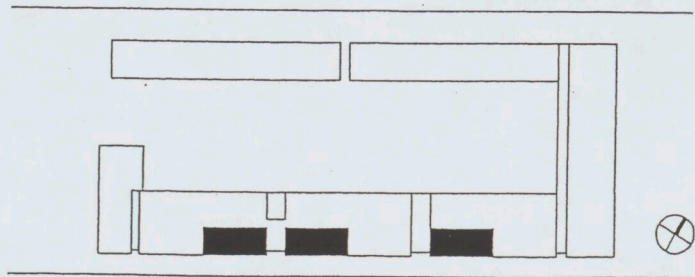


Type 3-nivo 2+3



↑

1:50

1:100

1:200

1:300

1:400

1:500

1:600

1:700

1:800

1:900

1:1000

1:1100

1:1200

1:1300

1:1400

1:1500

1:1600

1:1700

1:1800

1:1900

1:2000

1:2100

1:2200

1:2300

1:2400

1:2500

1:2600

1:2700

1:2800

1:2900

1:3000

1:3100

1:3200

1:3300

1:3400

1:3500

1:3600

1:3700

1:3800

1:3900

1:4000

1:4100

1:4200

1:4300

1:4400

1:4500

1:4600

1:4700

1:4800

1:4900

1:5000

1:5100

1:5200

1:5300

1:5400

1:5500

1:5600

1:5700

1:5800

1:5900

1:6000

1:6100

1:6200

1:6300

1:6400

1:6500

1:6600

1:6700

1:6800

1:6900

1:7000

1:7100

1:7200

1:7300

1:7400

1:7500

1:7600

1:7700

1:7800

1:7900

1:8000

1:8100

1:8200

1:8300

1:8400

1:8500

1:8600

1:8700

1:8800

1:8900

1:9000

1:9100

1:9200

1:9300

1:9400

1:9500

1:9600

1:9700

1:9800

1:9900

1:10000

4.5

5.0

5.5

6.0

C1 B1 A1 C2 B2 A2 B5 A5 A20 18 17 16 11

Patch Reference numbers on UTT

Image Engineering - Scan Reference Chart - TE263 - Serial No. 375

the scale towards document