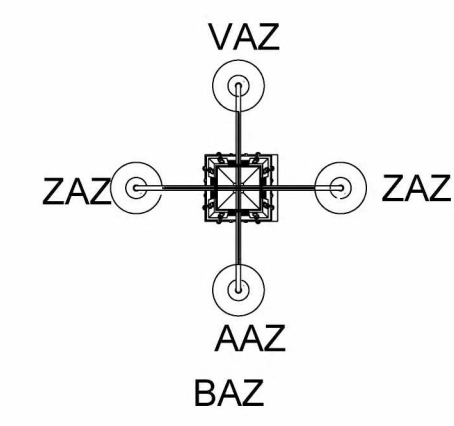
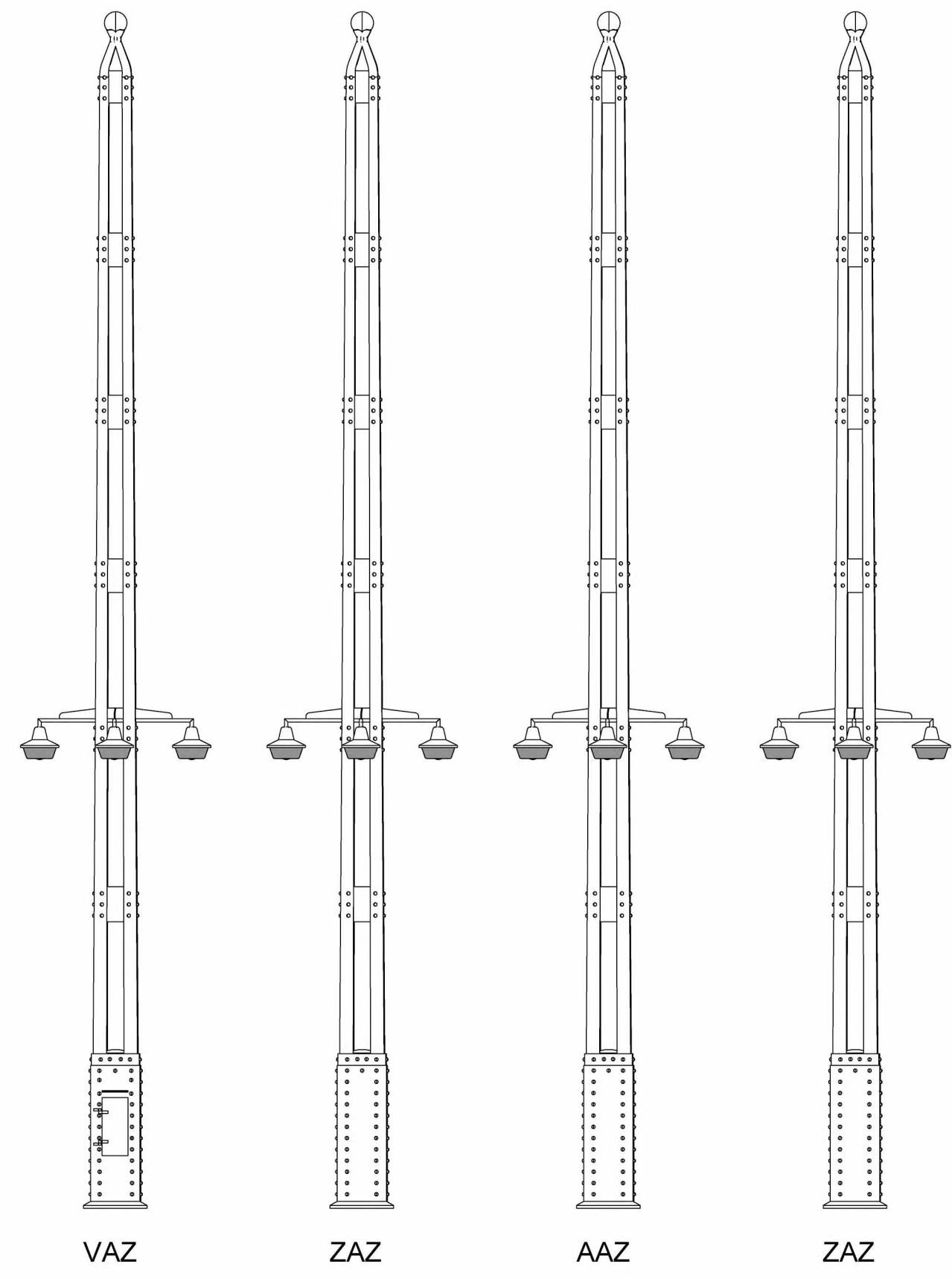
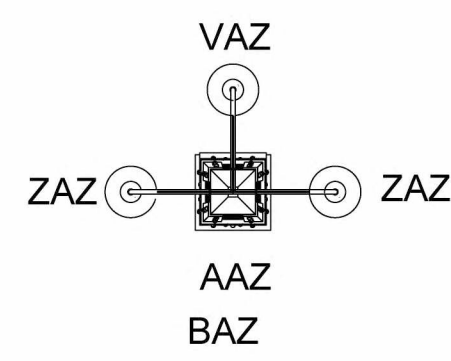
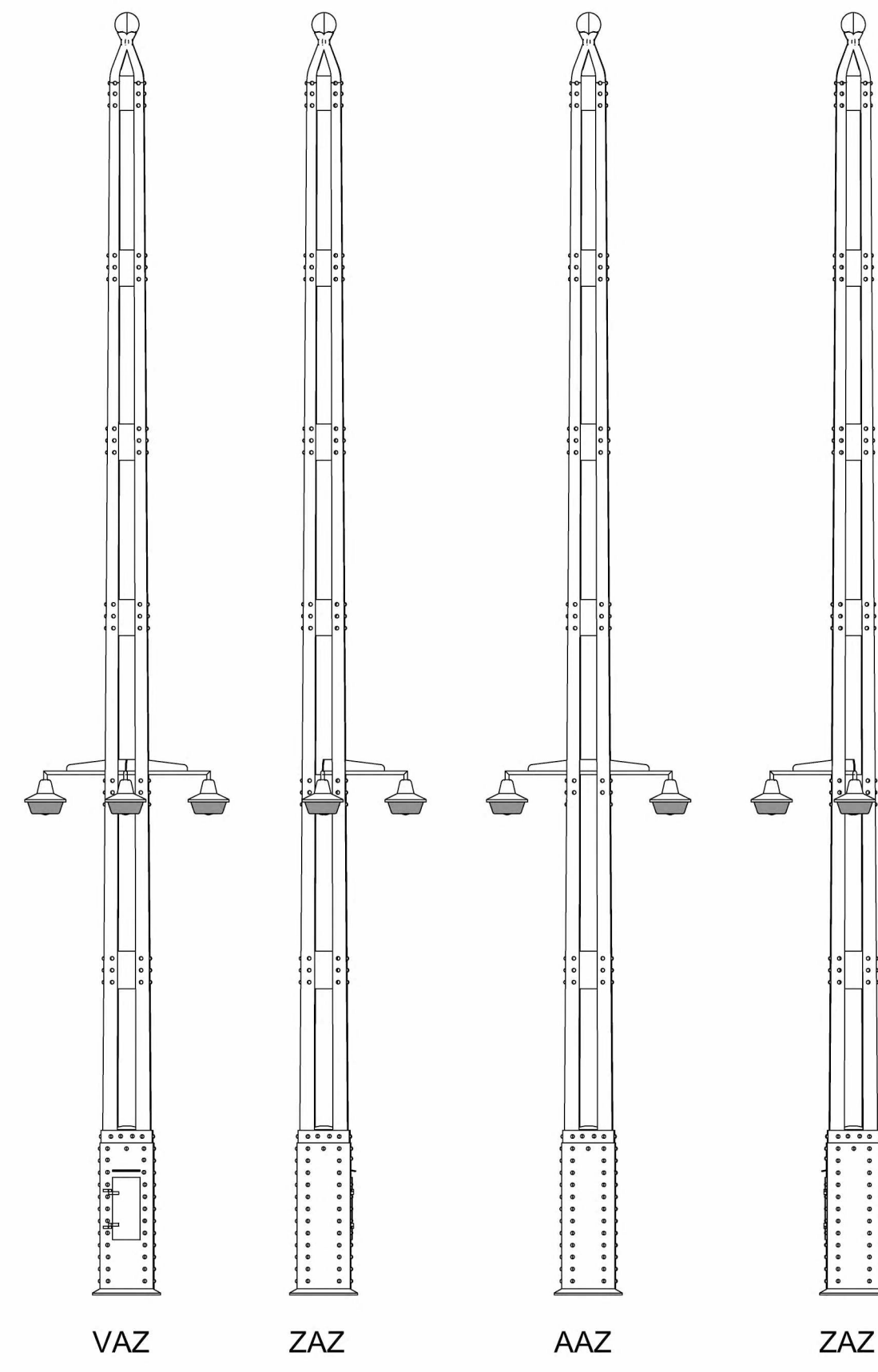


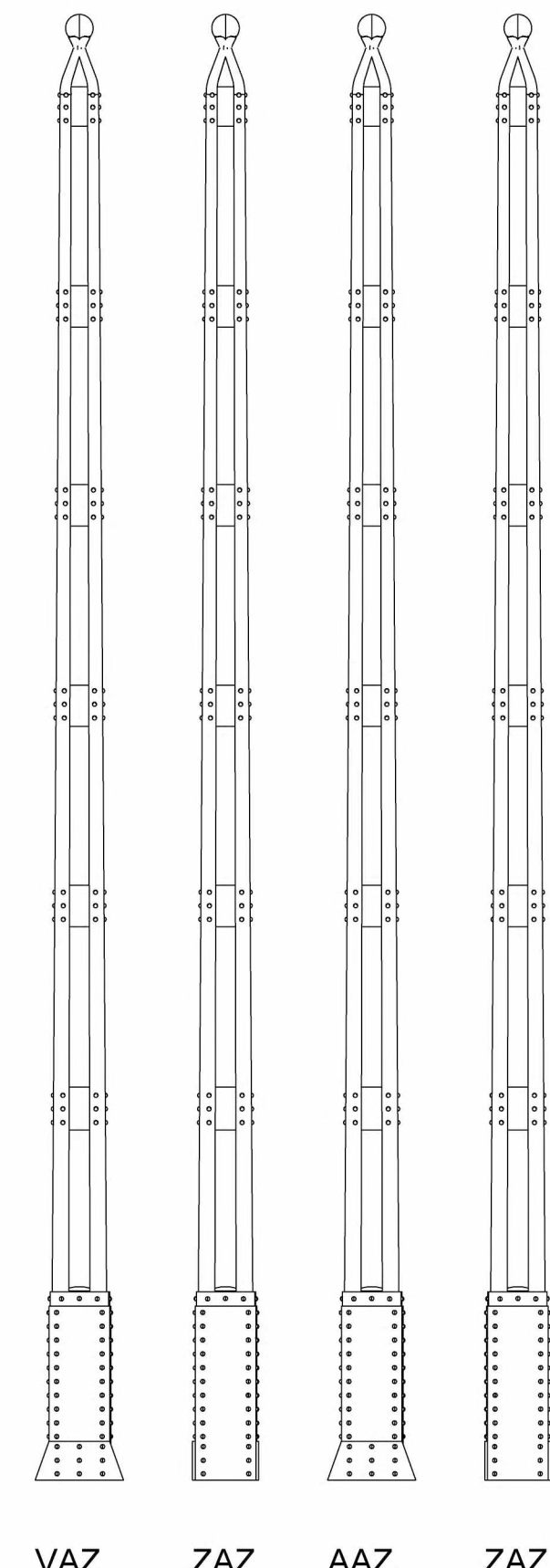
N-MAS-01



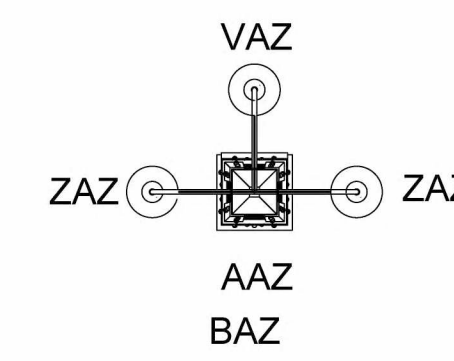
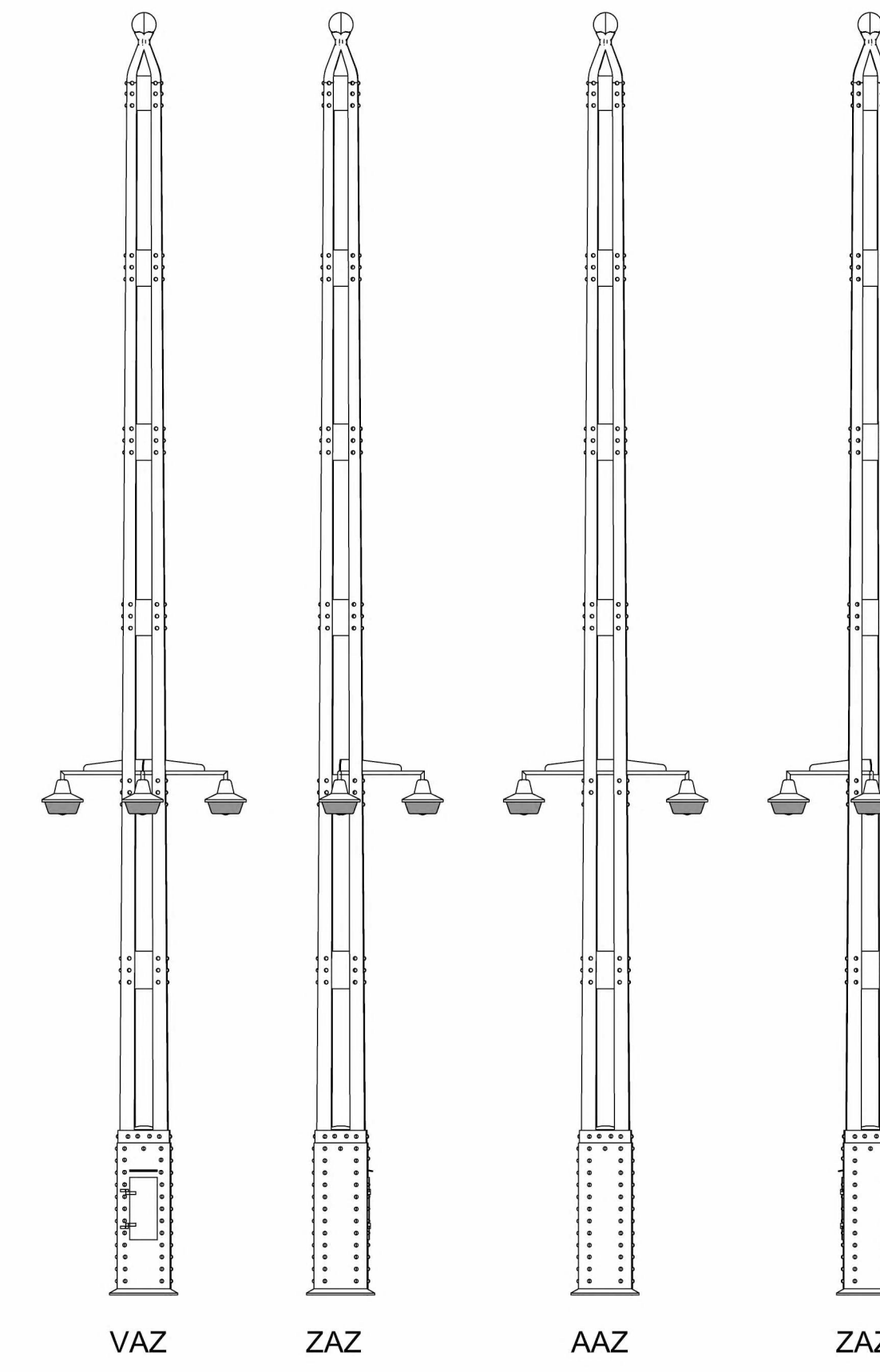
N-MAS-02



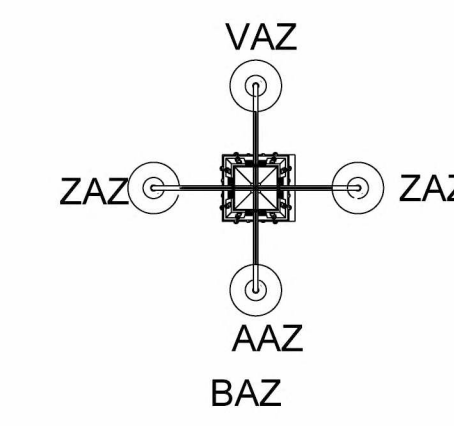
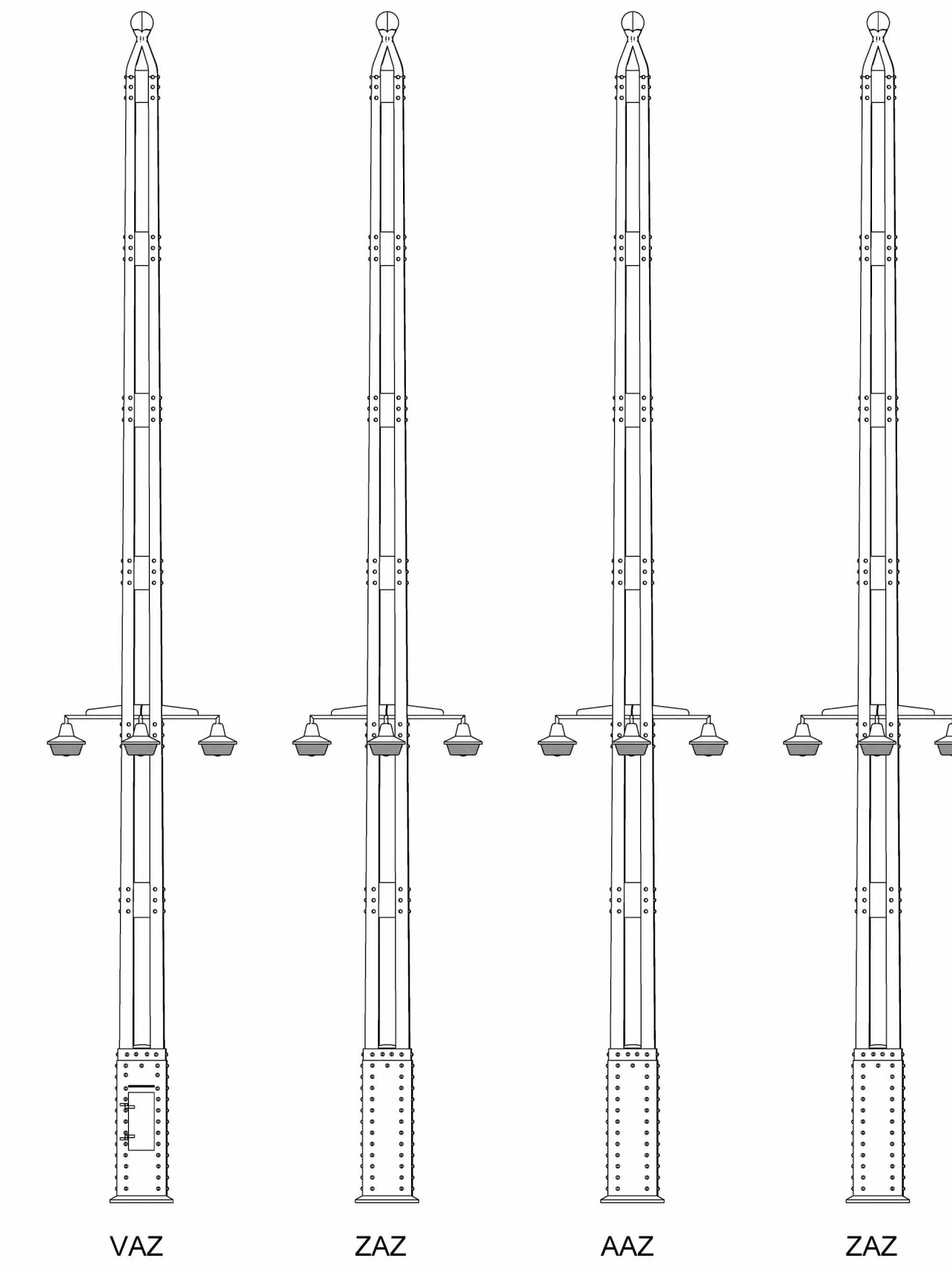
N-MAS-03



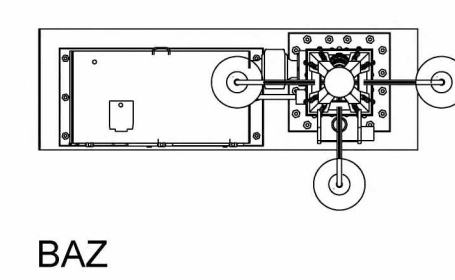
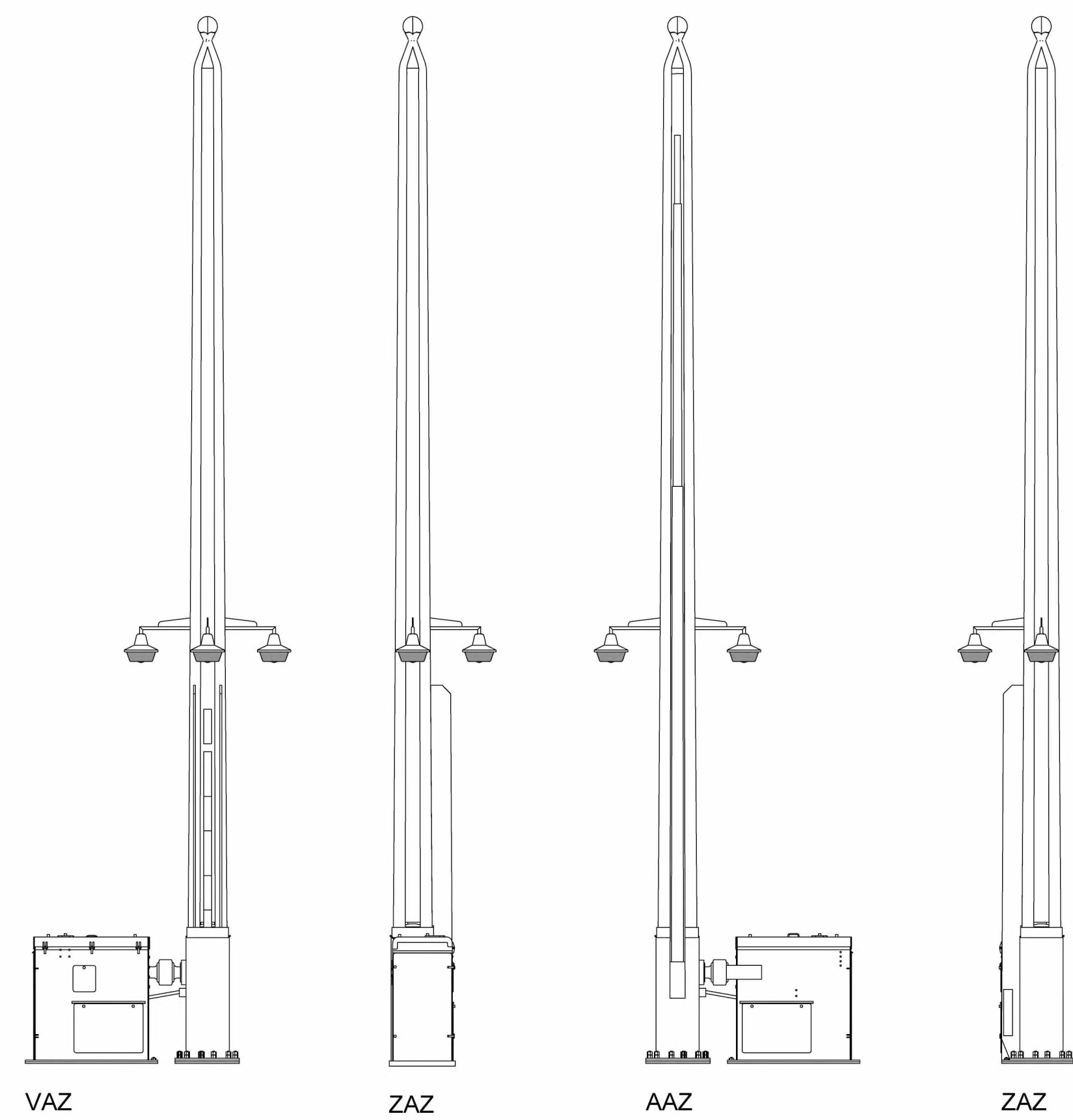
N-MAS-04



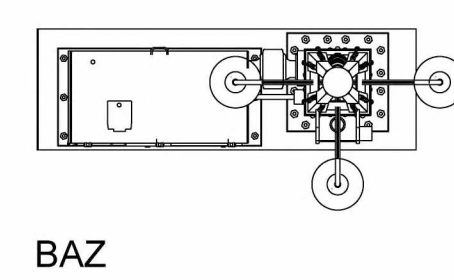
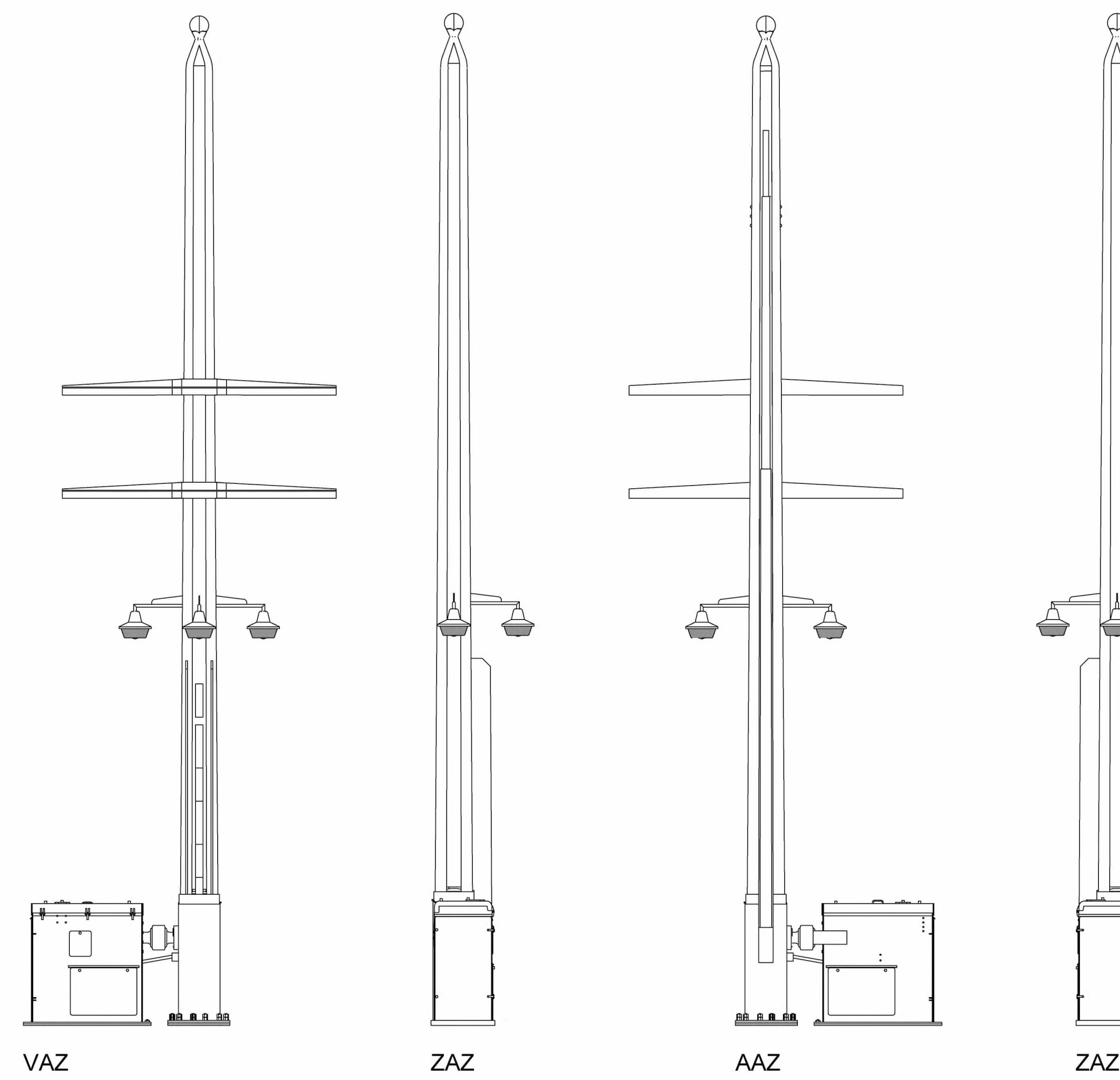
N-MAS-05



N-SLAG-01



N-SLAG-02

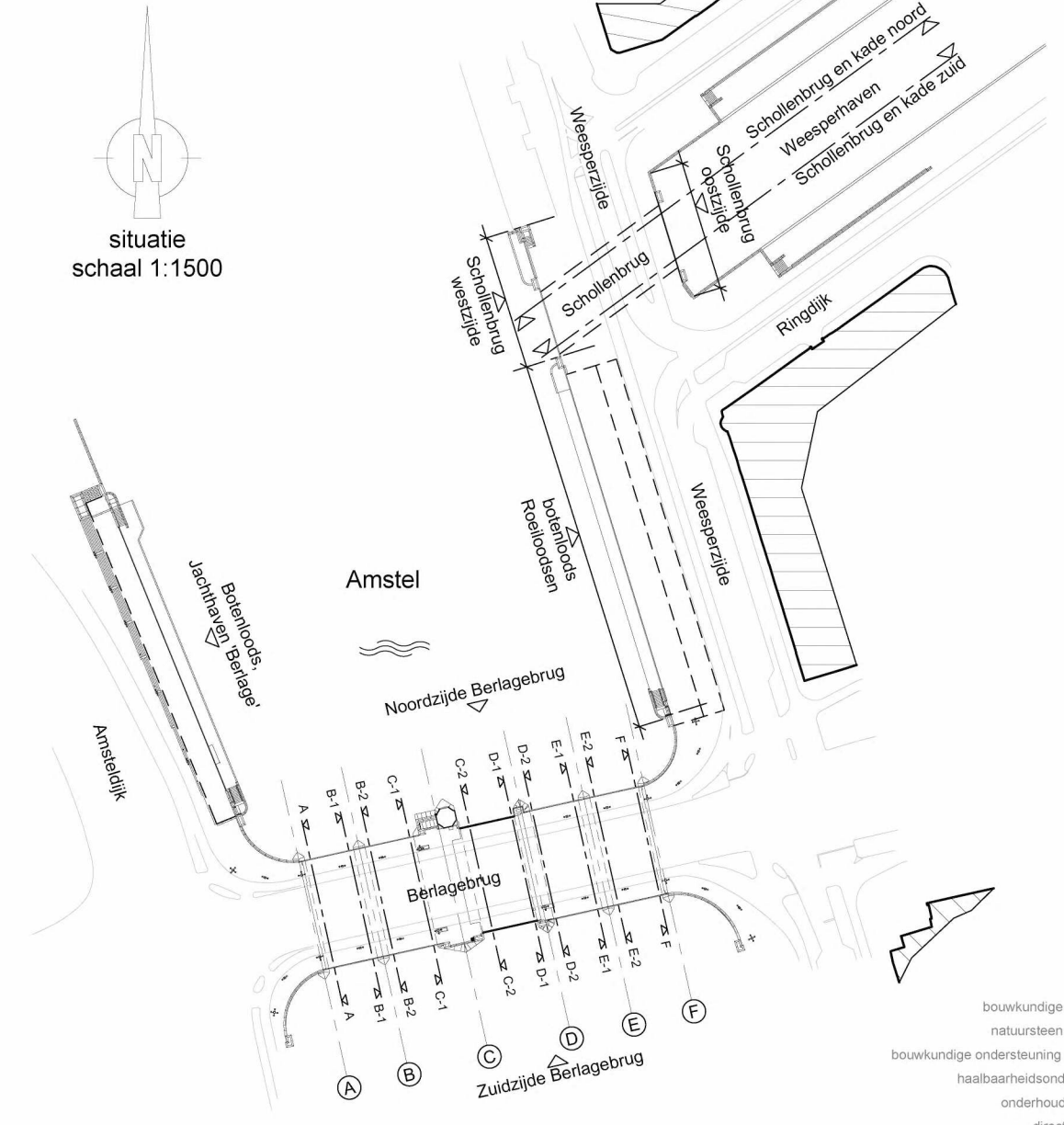


Mastcode	BBM	Uitspannummers	Mastcode	BBM	Uitspannummers
(werkomschrijving)	(conform DTA Slag 2)	(werkomschrijving)	(conform DTA Slag 2)	(werkomschrijving)	(conform DTA Slag 2)
N-MAS-01	021001	Z-VAZ-01	N-MAS-01	021001	Z-VAZ-01
N-LAN-01	021002	Z-LAZ-01	N-LAN-01	021002	Z-LAZ-01
N-LAN-02	021003	Z-LAZ-02	N-LAN-02	021003	Z-LAZ-02
N-LAN-03	021004	Z-LAZ-03	N-LAN-03	021004	Z-LAZ-03
N-LAN-04	021005	Z-LAZ-04	N-LAN-04	021005	Z-LAZ-04
N-LAN-05	021006	Z-LAZ-05	N-LAN-05	021006	Z-LAZ-05
N-LAN-06	021007	Z-LAZ-06	N-LAN-06	021007	Z-LAZ-06
N-LAN-07	021008	Z-LAZ-07	N-LAN-07	021008	Z-LAZ-07
N-LAN-08	021009	Z-LAZ-08	N-LAN-08	021009	Z-LAZ-08
N-LAN-09	021010	Z-LAZ-09	N-LAN-09	021010	Z-LAZ-09
N-LAN-10	021011	Z-LAZ-10	N-LAN-10	021011	Z-LAZ-10
N-LAN-11	021012	Z-LAZ-11	N-LAN-11	021012	Z-LAZ-11
N-LAN-12	021013	Z-LAZ-12	N-LAN-12	021013	Z-LAZ-12
N-LAN-13	021014	Z-LAZ-13	N-LAN-13	021014	Z-LAZ-13
N-LAN-14	021015	Z-LAZ-14	N-LAN-14	021015	Z-LAZ-14
N-LAN-15	021016	Z-LAZ-15	N-LAN-15	021016	Z-LAZ-15
N-LAN-16	021017	Z-LAZ-16	N-LAN-16	021017	Z-LAZ-16
N-LAN-17	021018	Z-LAZ-17	N-LAN-17	021018	Z-LAZ-17
N-LAN-18	021019	Z-LAZ-18	N-LAN-18	021019	Z-LAZ-18
N-LAN-19	021020	Z-LAZ-19	N-LAN-19	021020	Z-LAZ-19
N-LAN-20	021021	Z-LAZ-20	N-LAN-20	021021	Z-LAZ-20
N-LAN-21	021022	Z-LAZ-21	N-LAN-21	021022	Z-LAZ-21
N-LAN-22	021023	Z-LAZ-22	N-LAN-22	021023	Z-LAZ-22
N-LAN-23	021024	Z-LAZ-23	N-LAN-23	021024	Z-LAZ-23
N-LAN-24	021025	Z-LAZ-24	N-LAN-24	021025	Z-LAZ-24
N-LAN-25	021026	Z-LAZ-25	N-LAN-25	021026	Z-LAZ-25
N-LAN-26	021027	Z-LAZ-26	N-LAN-26	021027	Z-LAZ-26
N-LAN-27	021028	Z-LAZ-27	N-LAN-27	021028	Z-LAZ-27
N-LAN-28	021029	Z-LAZ-28	N-LAN-28	021029	Z-LAZ-28
N-LAN-29	021030	Z-LAZ-29	N-LAN-29	021030	Z-LAZ-29
N-LAN-30	021031	Z-LAZ-30	N-LAN-30	021031	Z-LAZ-30
N-LAN-31	021032	Z-LAZ-31	N-LAN-31	021032	Z-LAZ-31
N-LAN-32	021033	Z-LAZ-32	N-LAN-32	021033	Z-LAZ-32
N-LAN-33	021034	Z-LAZ-33	N-LAN-33	021034	Z-LAZ-33
N-LAN-34	021035	Z-LAZ-34	N-LAN-34	021035	Z-LAZ-34
N-LAN-35	021036	Z-LAZ-35	N-LAN-35	021036	Z-LAZ-35
N-LAN-36	021037	Z-LAZ-36	N-LAN-36	021037	Z-LAZ-36
N-LAN-37	021038	Z-LAZ-37	N-LAN-37	021038	Z-LAZ-37
N-LAN-38	021039	Z-LAZ-38	N-LAN-38	021039	Z-LAZ-38
N-LAN-39	021040	Z-LAZ-39	N-LAN-39	021040	Z-LAZ-39
N-LAN-40	021041	Z-LAZ-40	N-LAN-40	021041	Z-LAZ-40
N-LAN-41	021042	Z-LAZ-41	N-LAN-41	021042	Z-LAZ-41
N-LAN-42	021043	Z-LAZ-42	N-LAN-42	021043	Z-LAZ-42
N-LAN-43	021044	Z-LAZ-43	N-LAN-43	021044	Z-LAZ-43
N-LAN-44	021045	Z-LAZ-44	N-LAN-44	021045	Z-LAZ-44
N-LAN-45	021046	Z-LAZ-45	N-LAN-45	021046	Z-LAZ-45
N-LAN-46	021047	Z-LAZ-46	N-LAN-46	021047	Z-LAZ-46
N-LAN-47	021048	Z-LAZ-47	N-LAN-47	021048	Z-LAZ-47
N-LAN-48	021049	Z-LAZ-48	N-LAN-48	021049	Z-LAZ-48
N-LAN-49	021050	Z-LAZ-49	N-LAN-49	021050	Z-LAZ-49
N-LAN-50	021051	Z-LAZ-50	N-LAN-50	021051	Z-LAZ-50
N-LAN-51	021052	Z-LAZ-51	N-LAN-51	021052	Z-LAZ-51
N-LAN-52	021053	Z-LAZ-52	N-LAN-52	021053	Z-LAZ-52
N-LAN-53	021054	Z-LAZ-53	N-LAN-53	021054	Z-LAZ-53
N-LAN-54	021055	Z-LAZ-54	N-LAN-54	021055	Z-LAZ-54
N-LAN-55	021056	Z-LAZ-55	N-LAN-55	021056	Z-LAZ-55
N-LAN-56	021057	Z-LAZ-56	N-LAN-56	021057	Z-LAZ-56
N-LAN-57	021058	Z-LAZ-57	N-LAN-57	021058	Z-LAZ-57
N-LAN-58	021059	Z-LAZ-58	N-LAN-58	021059	Z-LAZ-58
N-LAN-59	021060	Z-LAZ-59	N-LAN-59	021060	Z-LAZ-59
N-LAN-60	021061	Z-LAZ-60	N-LAN-60	021061	Z-LAZ-60
N-LAN-61	021062	Z-LAZ-61	N-LAN-61	021062	Z-LAZ-61
N-LAN-62	021063	Z-LAZ-62	N-LAN-62	021063	Z-LAZ-62
N-LAN-63	021064	Z-LAZ-63	N-LAN-63	021064	Z-LAZ-63
N-LAN-64	021065	Z-LAZ-64	N-LAN-64	021065	Z-LAZ-64
N-LAN-65	021066	Z-LAZ-65	N-LAN-65	021066	Z-LAZ-65
N-LAN-66	021067	Z-LAZ-66	N-LAN-66	021067	Z-LAZ-66
N-LAN-67	021068	Z-LAZ-67	N-LAN-67	021068	Z-LAZ-67
N-LAN-68	021069	Z-LAZ-68	N-LAN-68	021069	Z-LAZ-68
N-LAN-69	021070	Z-LAZ-69	N-LAN-69	021070	Z-LAZ-69
N-LAN-70	021071	Z-LAZ-70	N-LAN-70	021071	Z-LAZ-70
N-LAN-71	021072	Z-LAZ-71	N-LAN-71	021072	Z-LAZ-71
N-LAN-72	021073	Z-LAZ-72	N-LAN-72	021073	Z-LAZ-72
N-LAN-73	021074	Z-LAZ-73	N-LAN-73	021074	Z-LAZ-73
N-LAN-74	021075	Z-LAZ-74	N-LAN-74	021075	Z-LAZ-74
N-LAN-75	021076	Z-LAZ-75	N-LAN-75	021076	Z-LAZ-75
N-LAN-76	021077	Z-LAZ-76	N-LAN-76	021077	Z-LAZ-76
N-LAN-77	021078	Z-LAZ-77	N-LAN-77	021078	Z-LAZ-77
N-LAN-78	021079	Z-LAZ-78	N-LAN-78	021079	Z-LAZ-78
N-LAN-79	021080	Z-LAZ-79	N-LAN-79	021080	Z-LAZ-79
N-LAN-80	021081	Z-LAZ-80	N-LAN-80	021081	Z-LAZ-80
N-LAN-81	021082	Z-LAZ-81	N-LAN-81	021082	Z-LAZ-81
N-LAN-82	021083	Z-LAZ-82	N-LAN-82	021083	Z-LAZ-82
N-LAN-83	021084	Z-LAZ-83	N-LAN-83	021084	Z-LAZ-83
N-LAN-84	021085	Z-LAZ-84	N-LAN-84	021085	Z-LAZ-84
N-LAN-85	021086	Z-LAZ-85	N-LAN-85	021086	Z-LAZ-85
N-LAN-86	021087	Z-LAZ-86	N-LAN-86	021087	Z-LAZ-86
N-LAN-87	021088	Z-LAZ-87	N-LAN-87	021088	Z-LAZ-87
N-LAN-88	021089	Z-LAZ-88	N-LAN-88	021089	Z-LAZ-88
N-LAN-89	021090	Z-LAZ-89	N-LAN-89	021090	Z-LAZ-89
N-LAN-90	021091	Z-LAZ-90	N-LAN-90	021091	Z-LAZ-90
N-LAN-91	021092	Z-LAZ-91	N-LAN-91	021092	Z-LAZ-91
N-LAN-92	021093	Z-LAZ-92	N-LAN-92	021093	Z-LAZ-92
N-LAN-93	021094	Z-LAZ-93	N-LAN-93	021094	Z-LAZ-93
N-LAN-94	021095	Z-LAZ-94	N-LAN-94	021095	Z-LAZ-94
N-LAN-95	021096	Z-LAZ-95	N-LAN-95	021096	Z-LAZ-95
N-LAN-96	021097	Z-LAZ-96	N-LAN-96	021097	Z-LAZ-96
N-LAN-97	021098	Z-LAZ-97	N-LAN-97	021098	Z-LAZ-97
N-LAN-98	021099	Z-LAZ-98	N-LAN-98	021099	Z-LAZ-98
N-LAN-99	021100	Z-LAZ-99	N-LAN-99	021100	Z-LAZ-99
N-LAN-100	021101	Z-LAZ-100	N-LAN-100	021101	Z-LAZ-100

wijziging A: werkpakket I scope wijziging verweven  
 wijziging B: Locatie masten aanpassen en relatieve hoogten  
 wijziging C: werkpakket I scope wijziging verweven

**ALGEMEEN:**  
 ALLE MATIYVERING IN HET WERK TE CONTROLLEREN  
 De restauratiewerkzaamheden van de Berlagebrug zullen in 2 werkpakketten worden uitgevoerd  
 De werkzaamheden van werkpakket 1 betreffen de restauratiewerkzaamheden waarbij de brug zal moeten worden  
 afgesloten. De werkzaamheden van werkpakket 2 betreffen de brug (geheel) te gebruiken worden  
 werkpakket 1 en 2. Het ontwerp is gebaseerd op de bestaande toestand.

Tekeningen zijn een automatisch voortvloeiende afgeleid van de werktekening.  
 Tekeningen gebaseerd op de bestaande toestand digitaal aangepast door Amsterdam Ingeieursbureau.  
 Voor de exacte locatie (bestaand en nieuw) van de verschillende masten verwijzen naar de tekening 3272-03 DTA van  
 Gemeente Amsterdam.



restauratiebureau BBM Eising 2 4041 VP Plaatsdijkweg  
 T 0163-912888 E info@bbm.nl

Opdrachtgever: Gemeente Amsterdam  
 1000 AE Amsterdam  
 Project: Berlagecomplex  
 Civiel Amsterdam  
 Omschrijving: Restauratie Berlagebrug (werkpakket I)  
 Werkpakket: Bestaande toestand (indiening en aanbesteding)  
 Onderdeel: Trammasten en slagboommasten NOORD  
 Projectnr.: 554-1A  
 Tekeningnr.: BT-03  
 datum: 10-08-2020 ref. gewijzigd getek. ref. gewijzigd getek.  
 schaal: 1:50 A 02-10-20 KW E  
 poseerd: EMF/vk B 02-11-20 KW F  
 formaat: A0 C 02-12-20 KW G  
 D H  
 Alle rechten voorbehouden ©